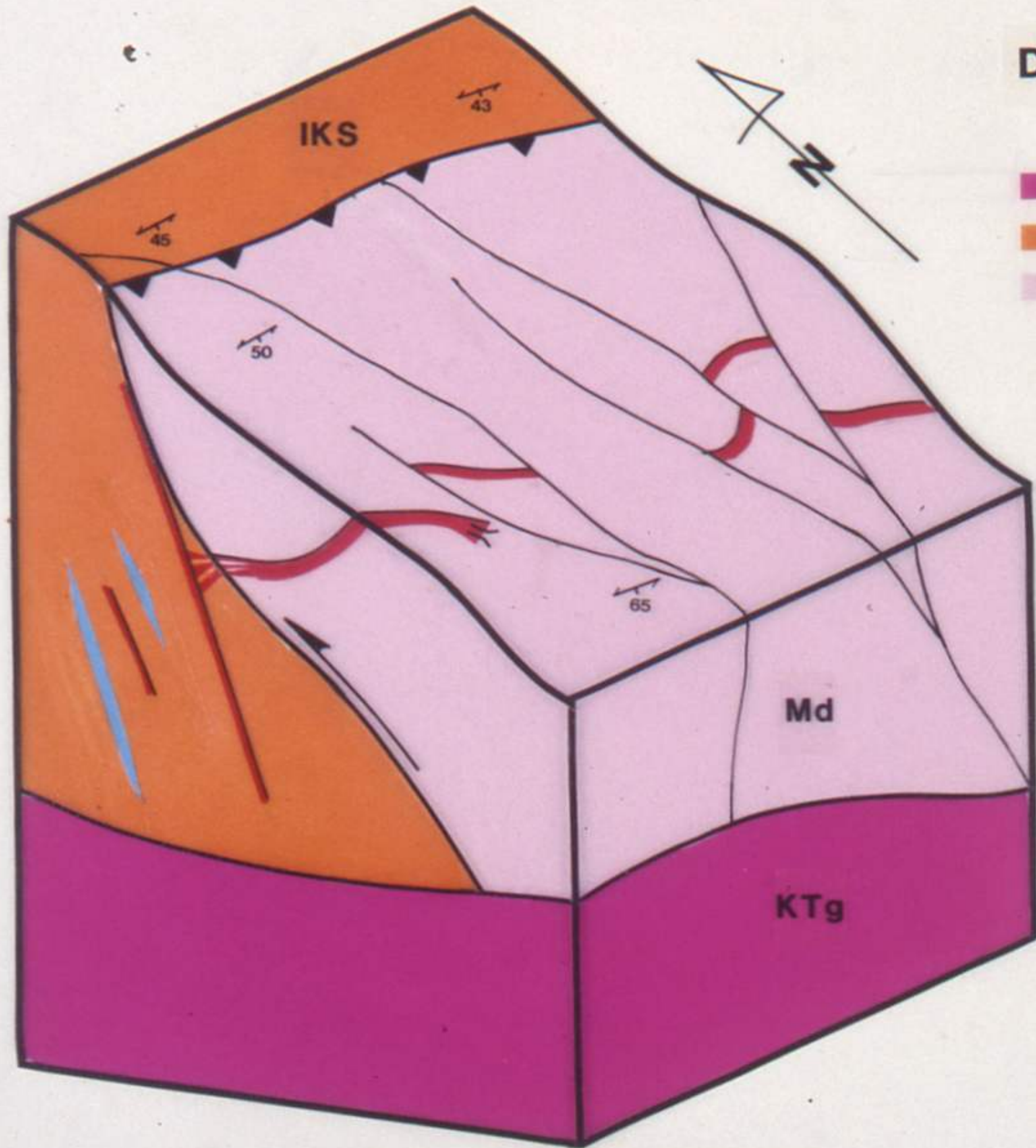


# DEER HORN MINE



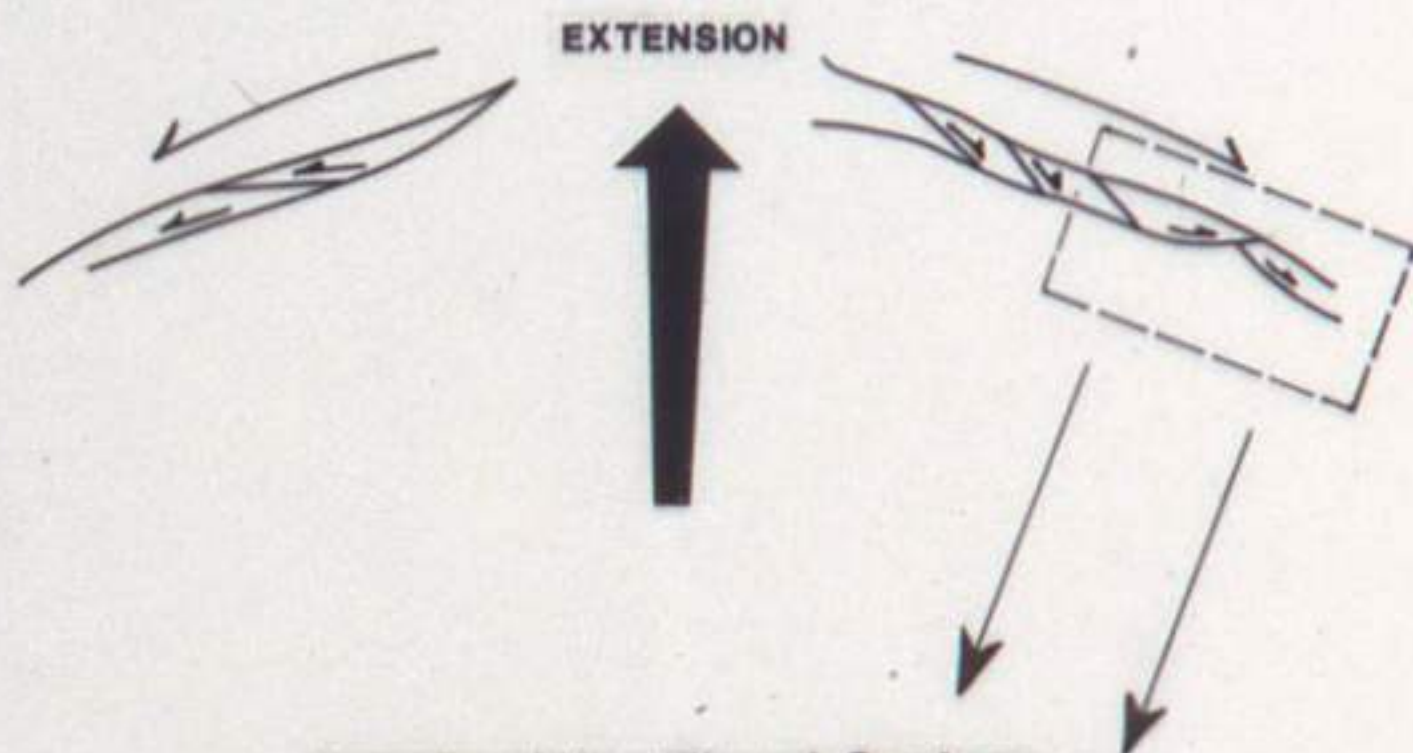
- KTg** granodiorite
- IKS** Skeena Group Sediments
- Md** weakly foliated to mylonitic quartz diorite
- ep, ga skarn
- quartz vein

MODIFIED FROM PAPEZIK, 1957



# GENETIC MODEL FOR DETACHMENT - HOSTED GOLD DEPOSITS

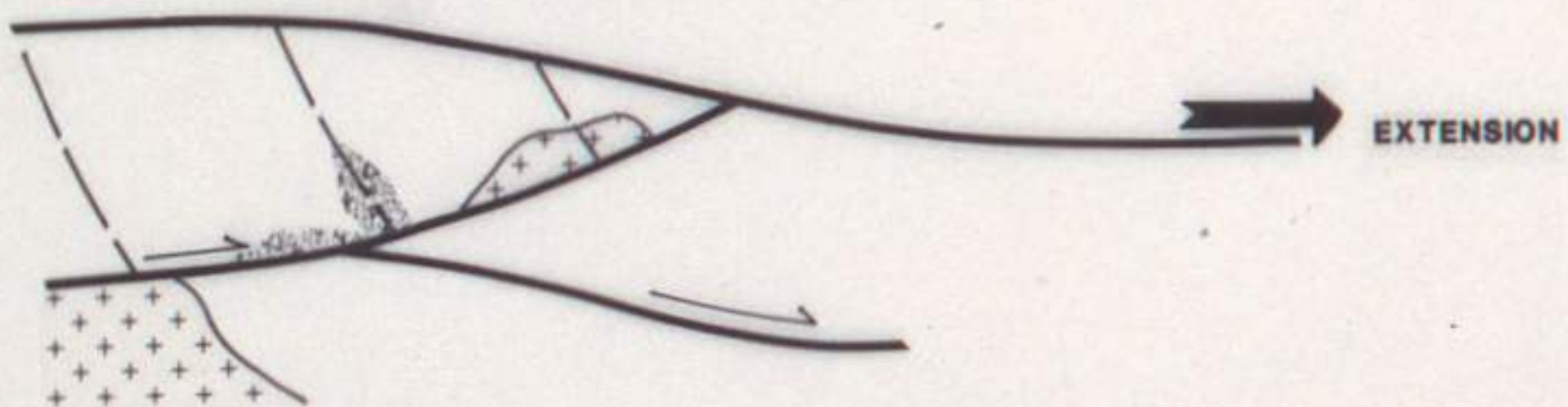
Uplift and Extension



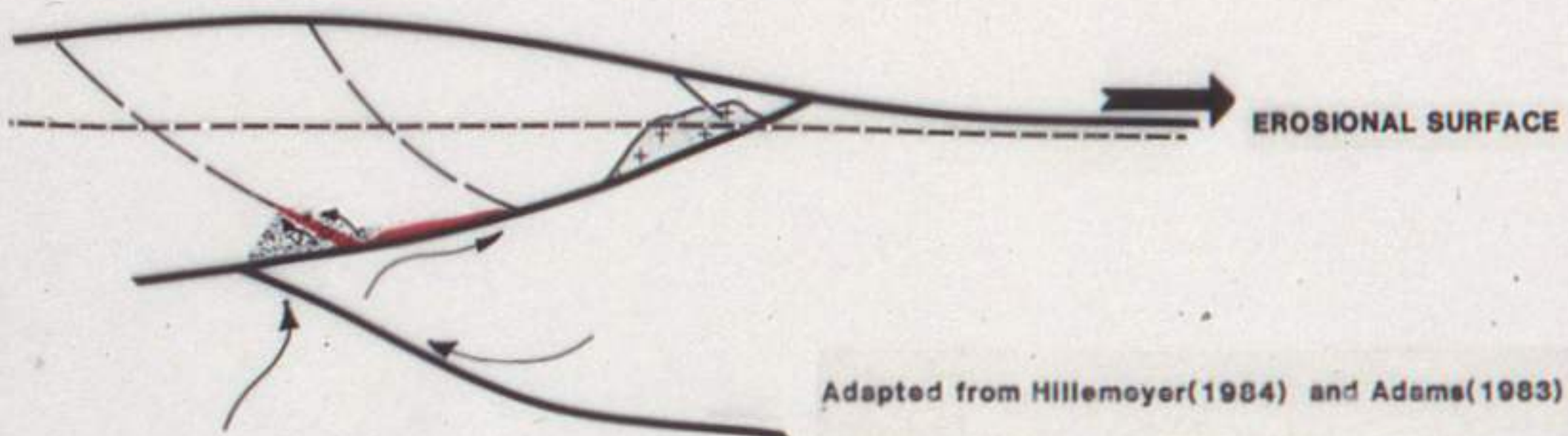
Anastomosing Thrust System



Late High Angle Faults

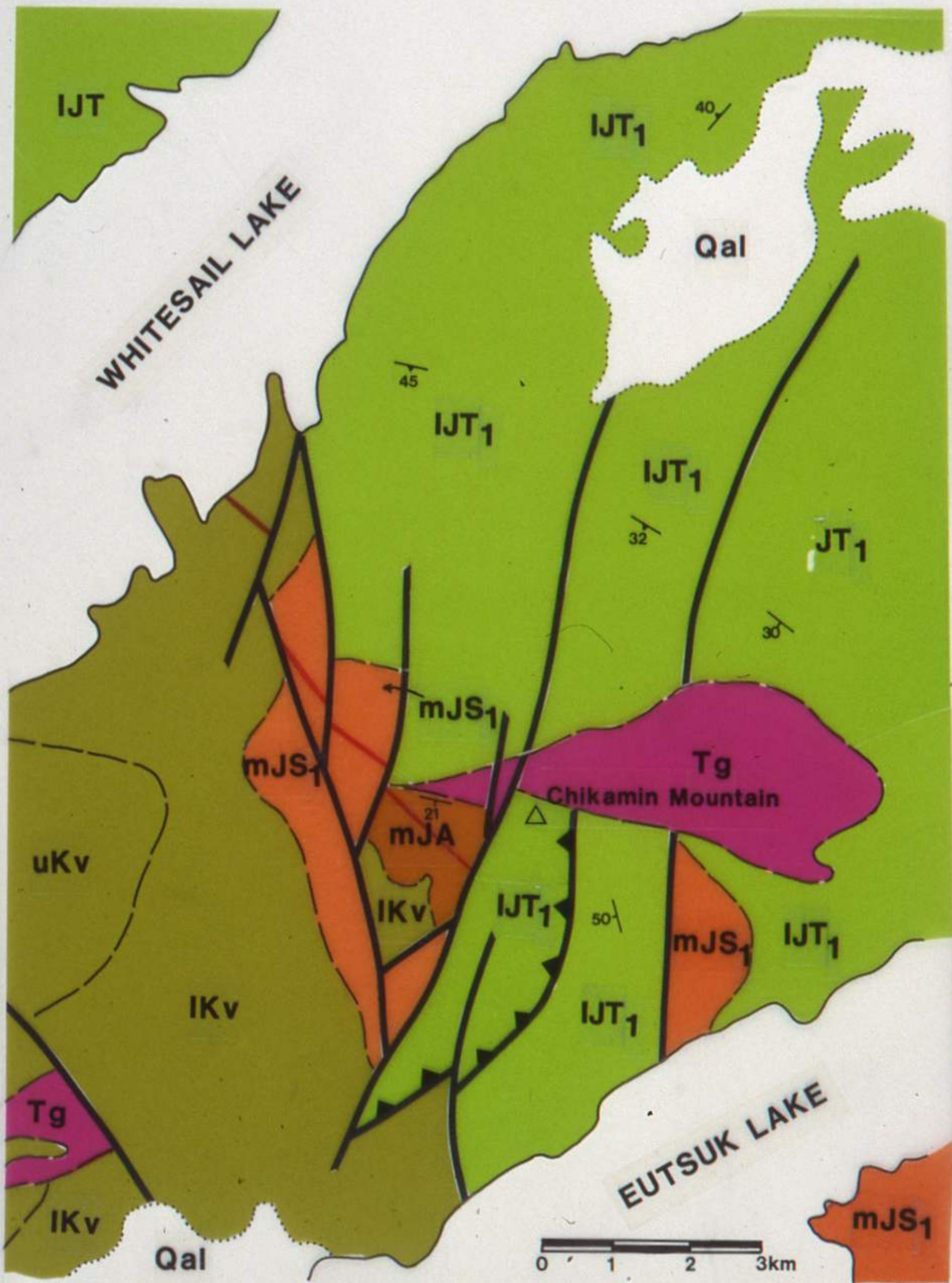


Circulation and Precipitation of Mineralized Water

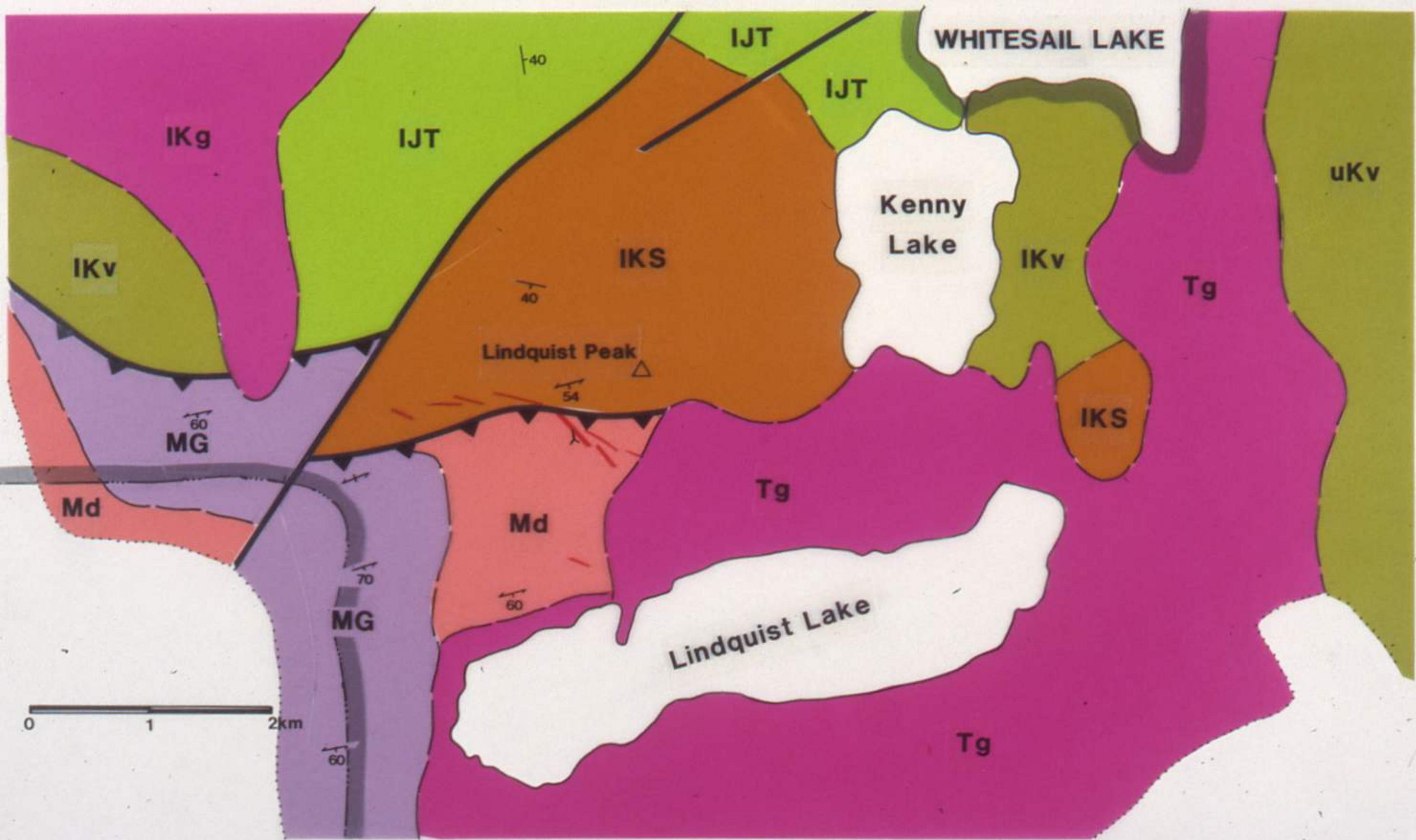


Adapted from Hillemeier(1984) and Adams(1983)

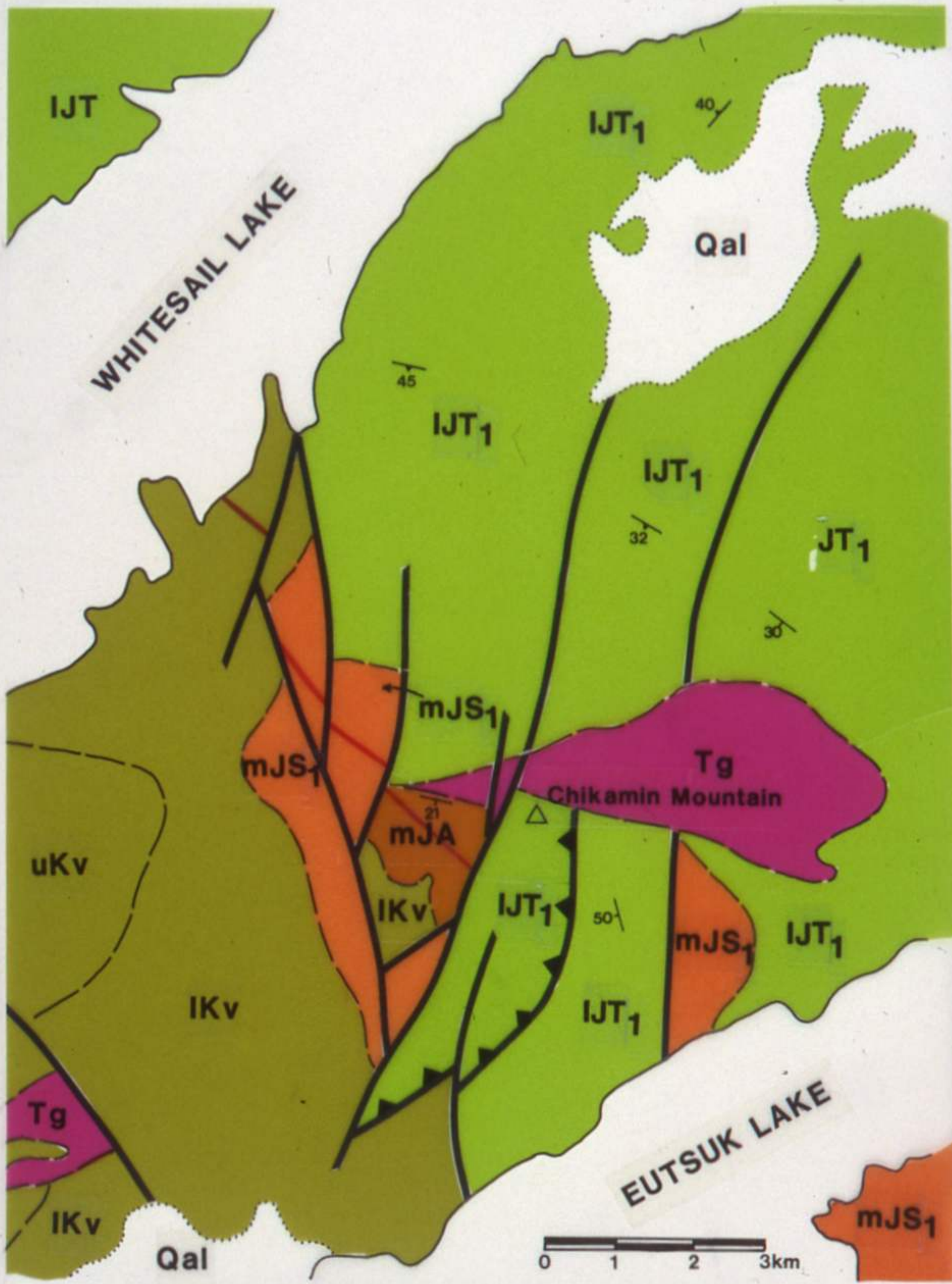






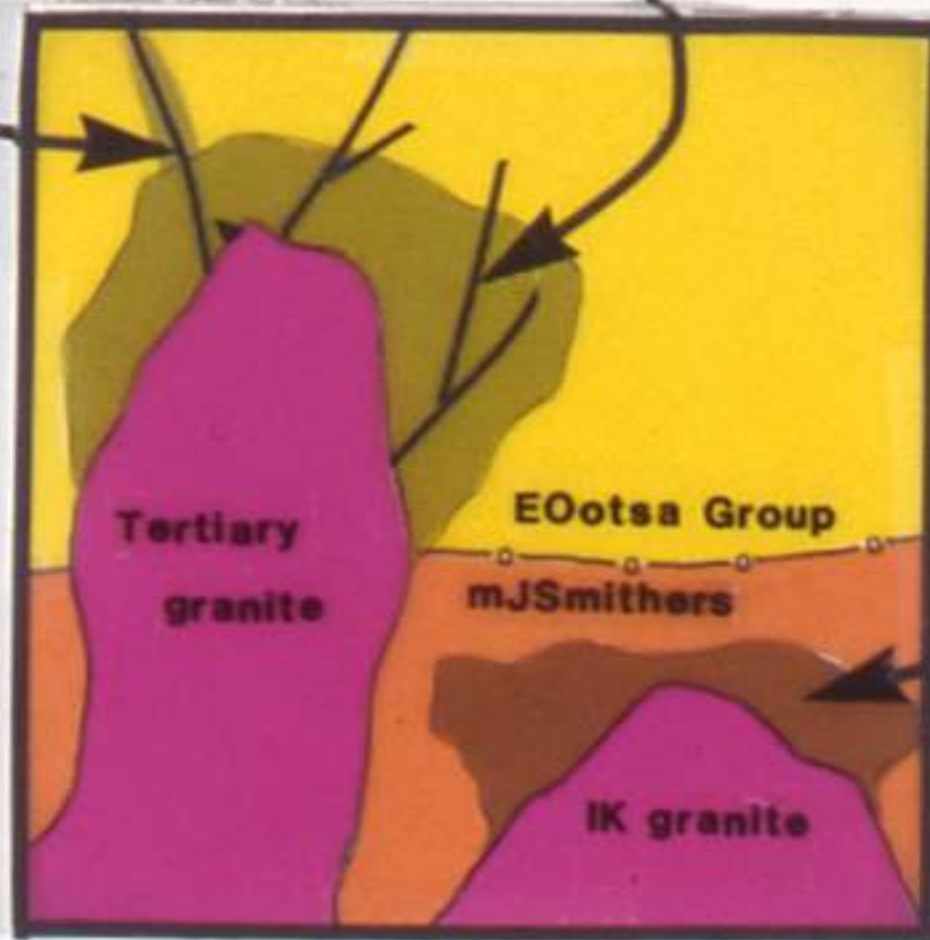




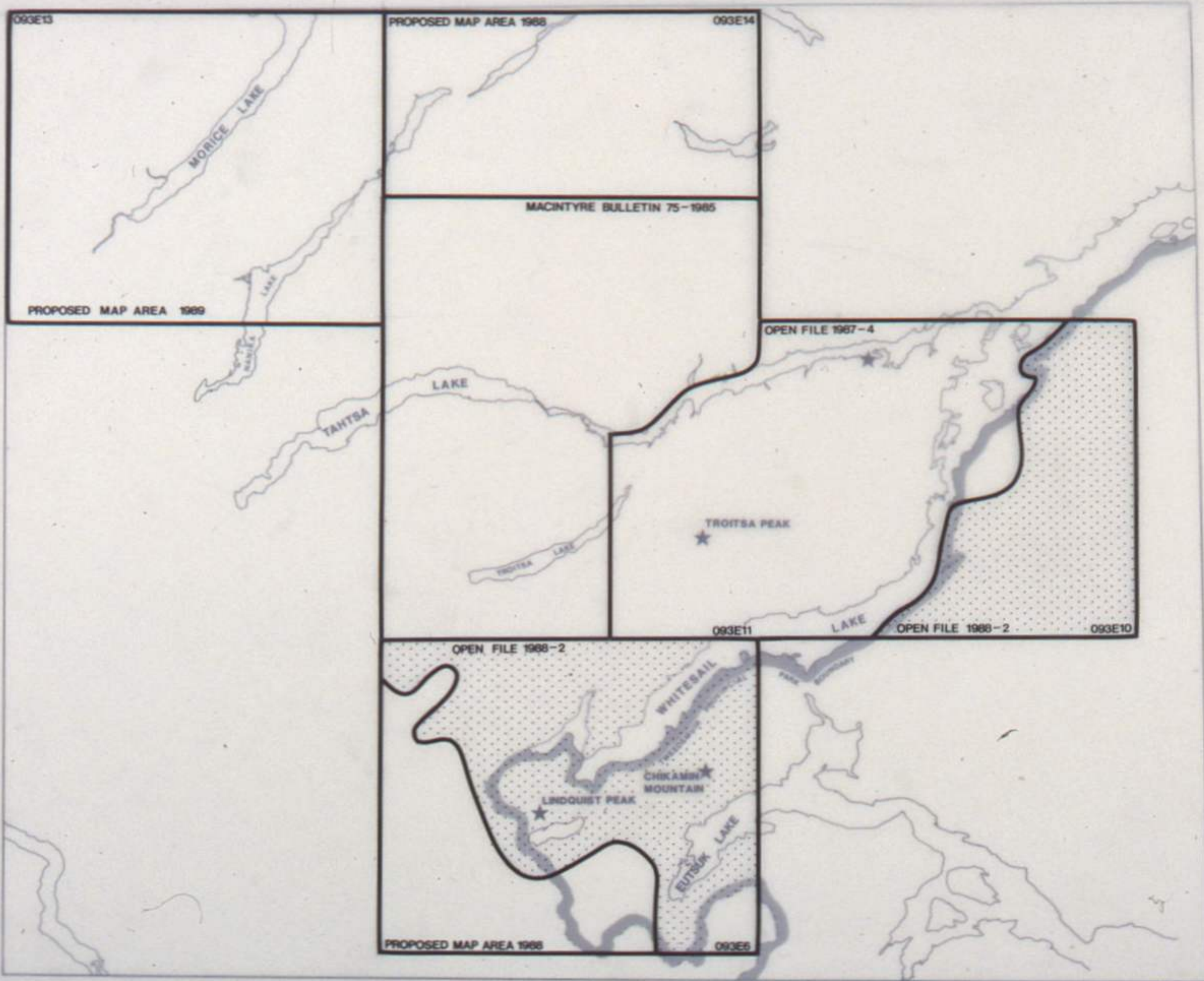




PERVASIVE ALTERATION:  
SILICA, CLAY, BARITE





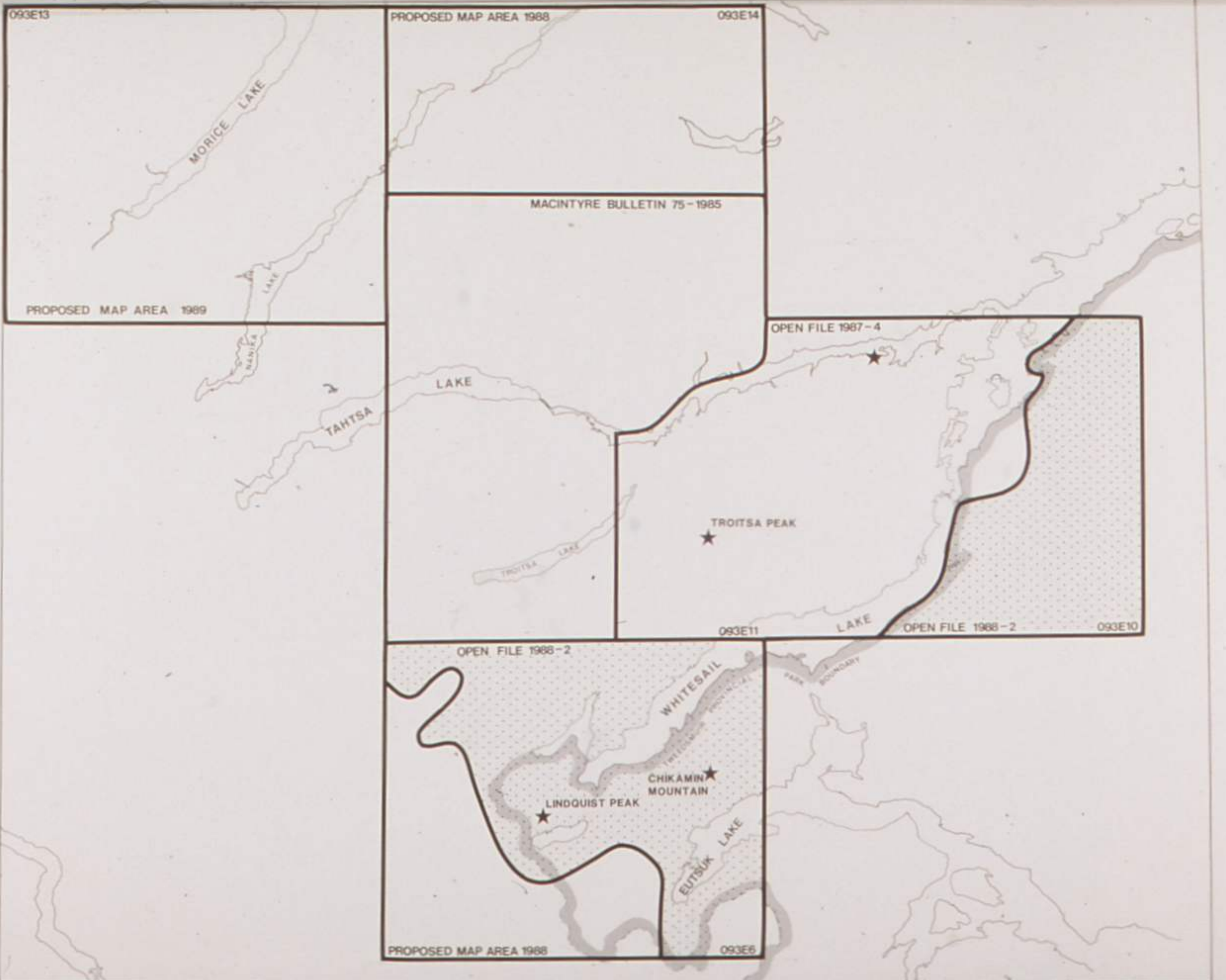




# POLYMETALLIC VEINS







093E13

PROPOSED MAP AREA 1988

093E14

MORICE LAKE

NANIKA LAKE

PROPOSED MAP AREA 1989

MACINTYRE BULLETIN 75-1985

OPEN FILE 1987-4

TAHTSA LAKE

LAKE

TROITSA PEAK

TROITSA LAKE

093E11

LAKE

OPEN FILE 1988-2

093E10

OPEN FILE 1988-2

WHITESAIL

PARK BOUNDARY

CHIKAMIN MOUNTAIN

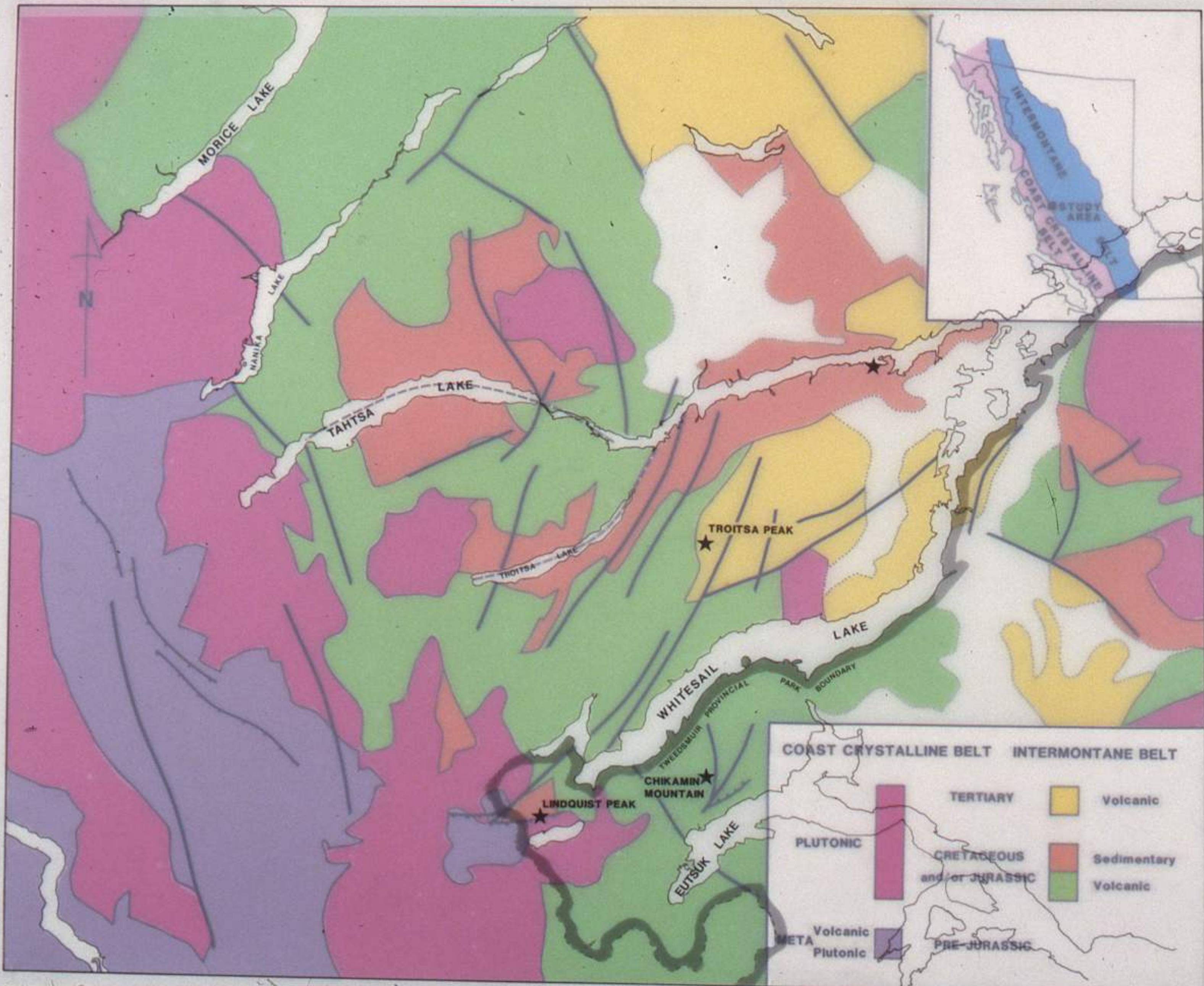
LINDQUIST PEAK

EUTSUK LAKE

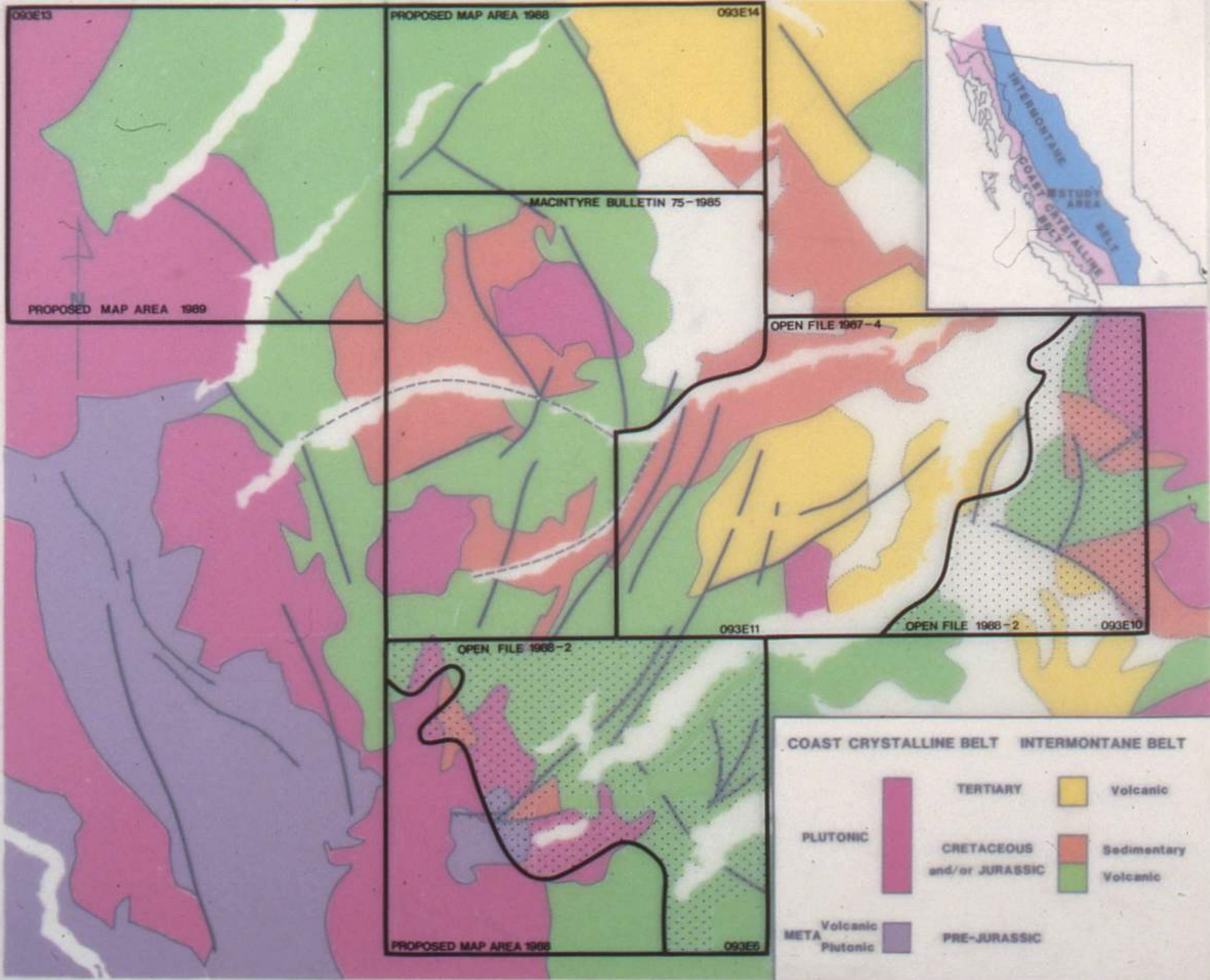
PROPOSED MAP AREA 1988

093E6

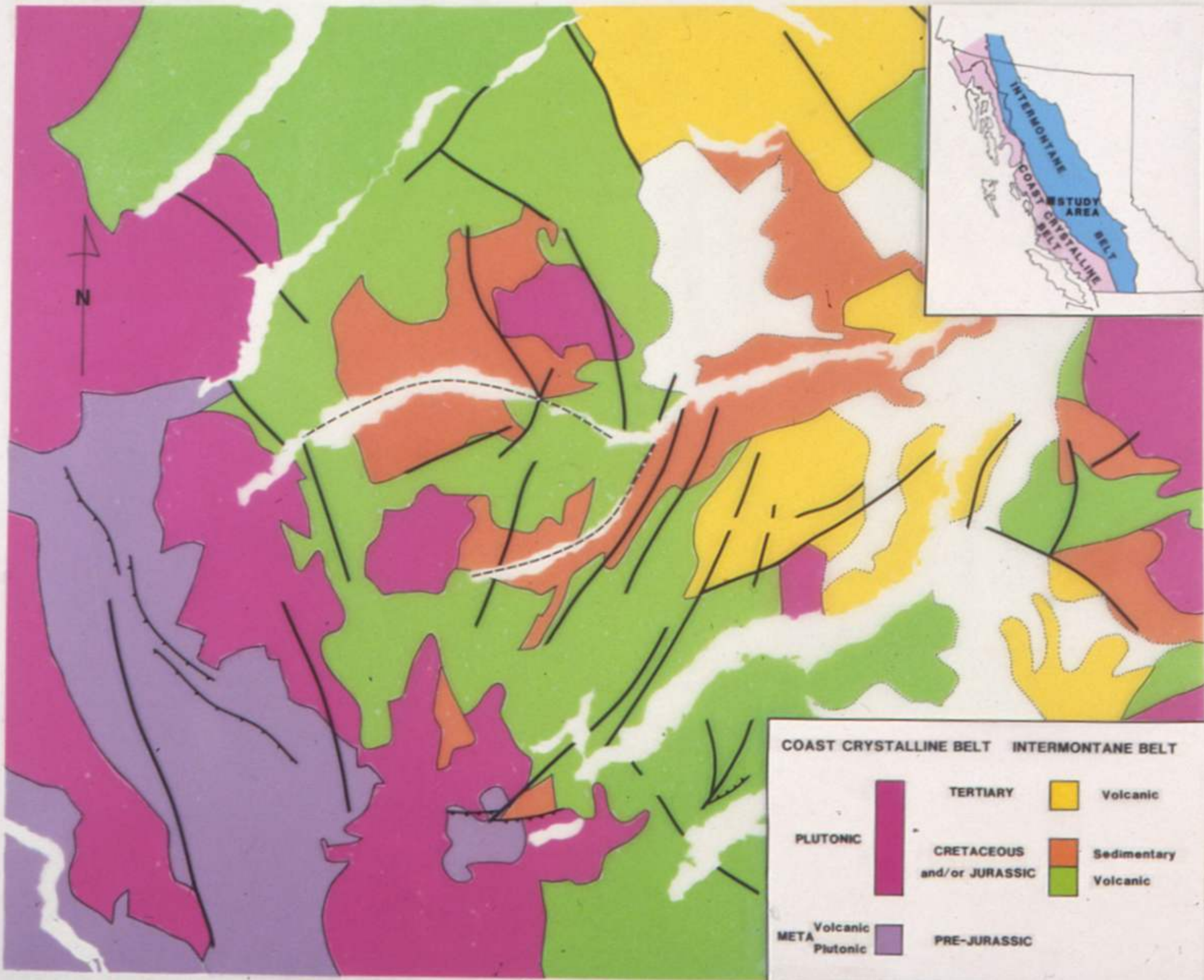














093E13

PROPOSED MAP AREA 1988

093E14

MORICE LAKE

MACINTYRE BULLETIN 75-1985

PROPOSED MAP AREA 1989

OPEN FILE 1987-4

MANILA LAKE

LAKE

TAHTSA

TROITSA PEAK

TROITSA LAKE

093E11

LAKE

OPEN FILE 1988-2

093E10

OPEN FILE 1988-2

WHITESAIL

PARK BOUNDARY

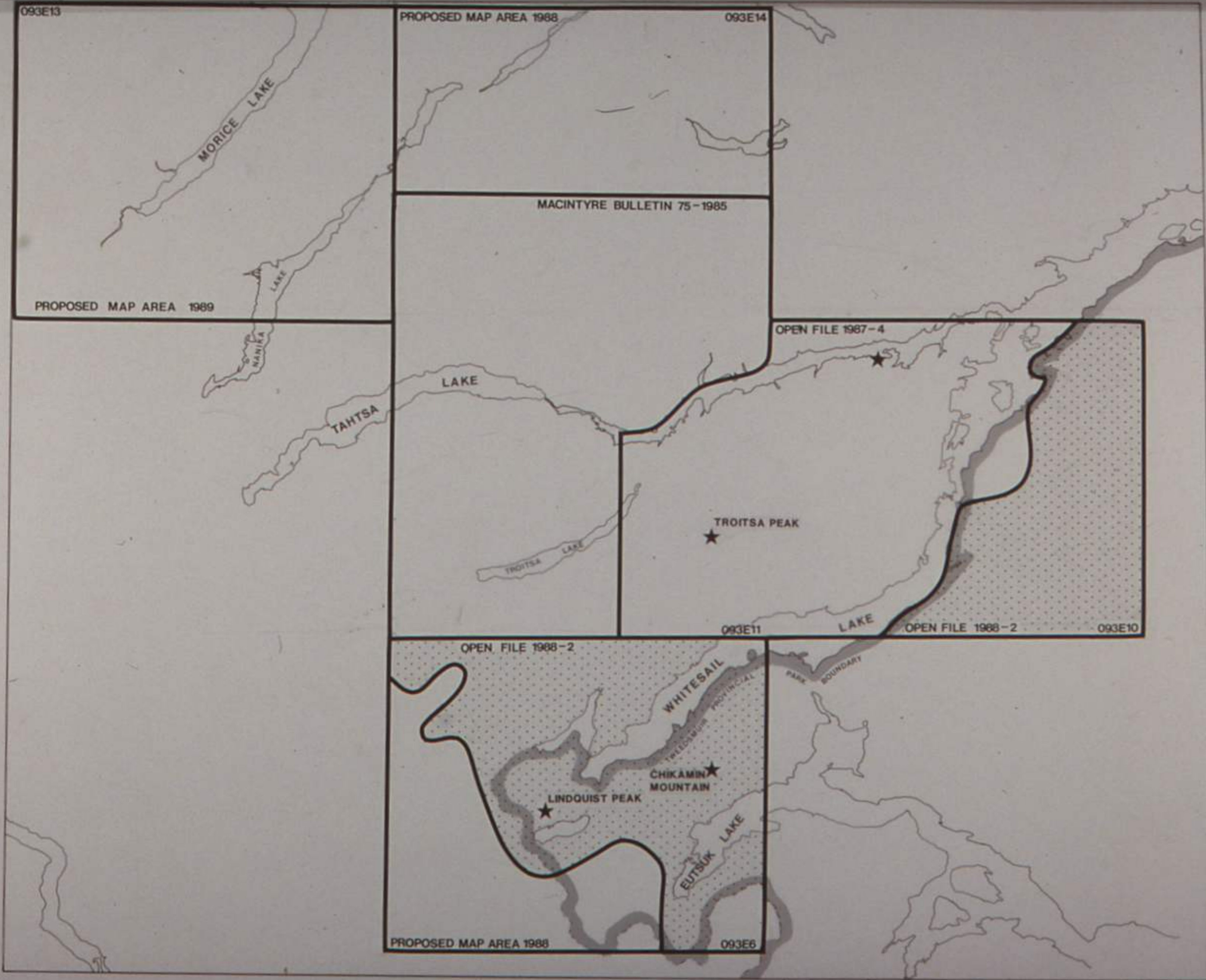
CHIKAMIN MOUNTAIN

LINDQUIST PEAK

EUTSUK LAKE

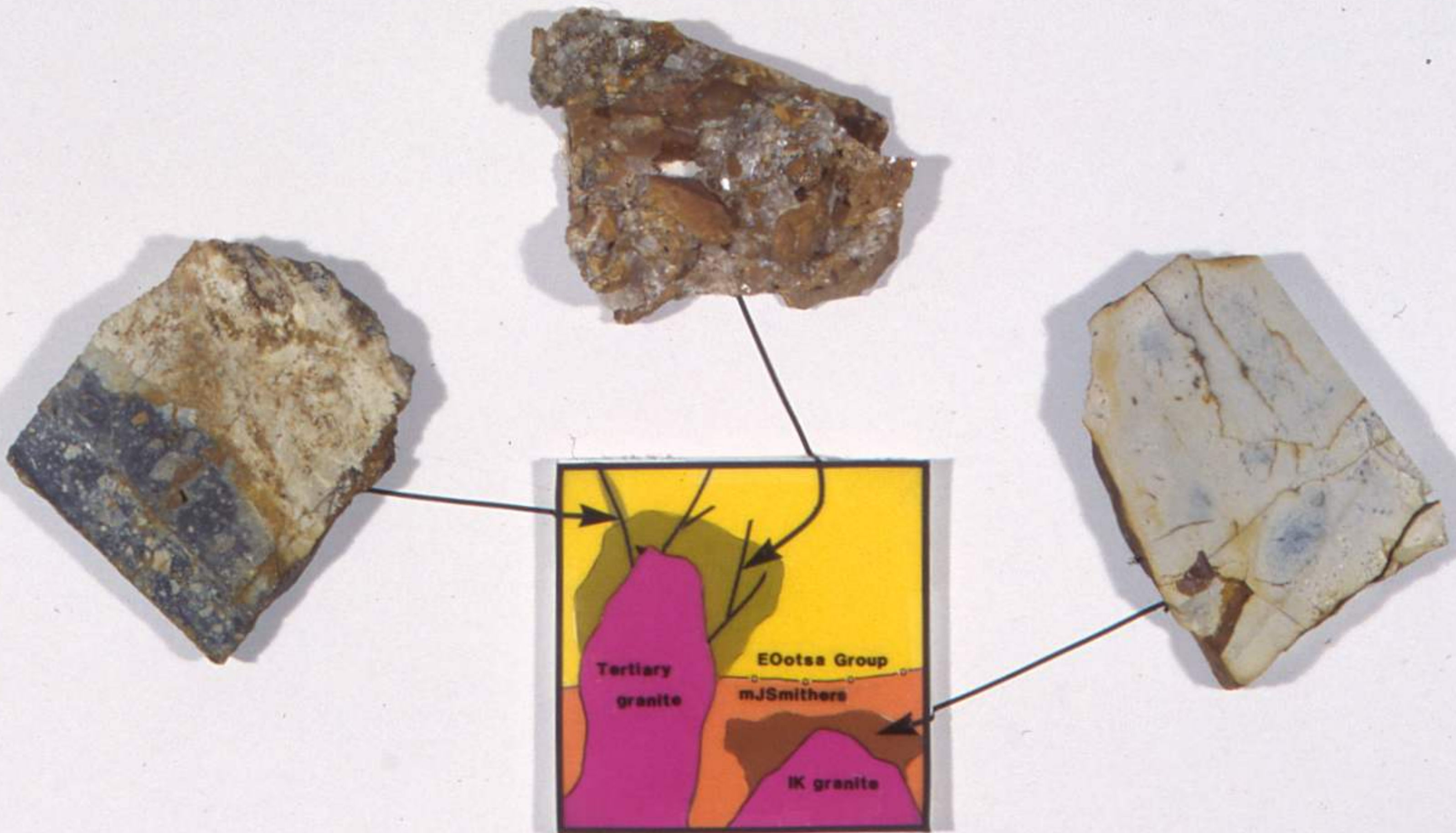
PROPOSED MAP AREA 1988

093E6



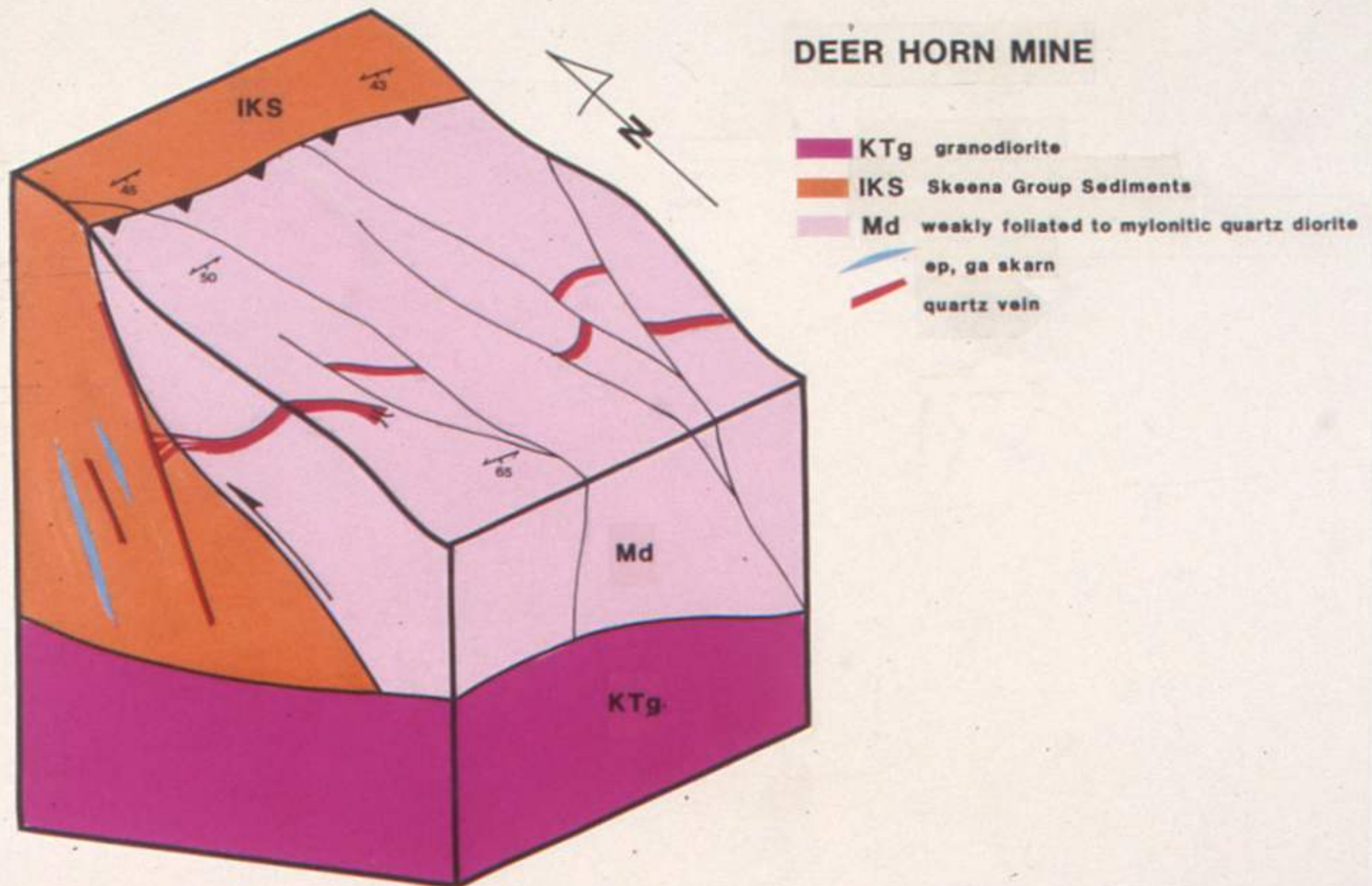


# HYDROTHERMAL ALTERATION ANOMALOUS Hg AND As



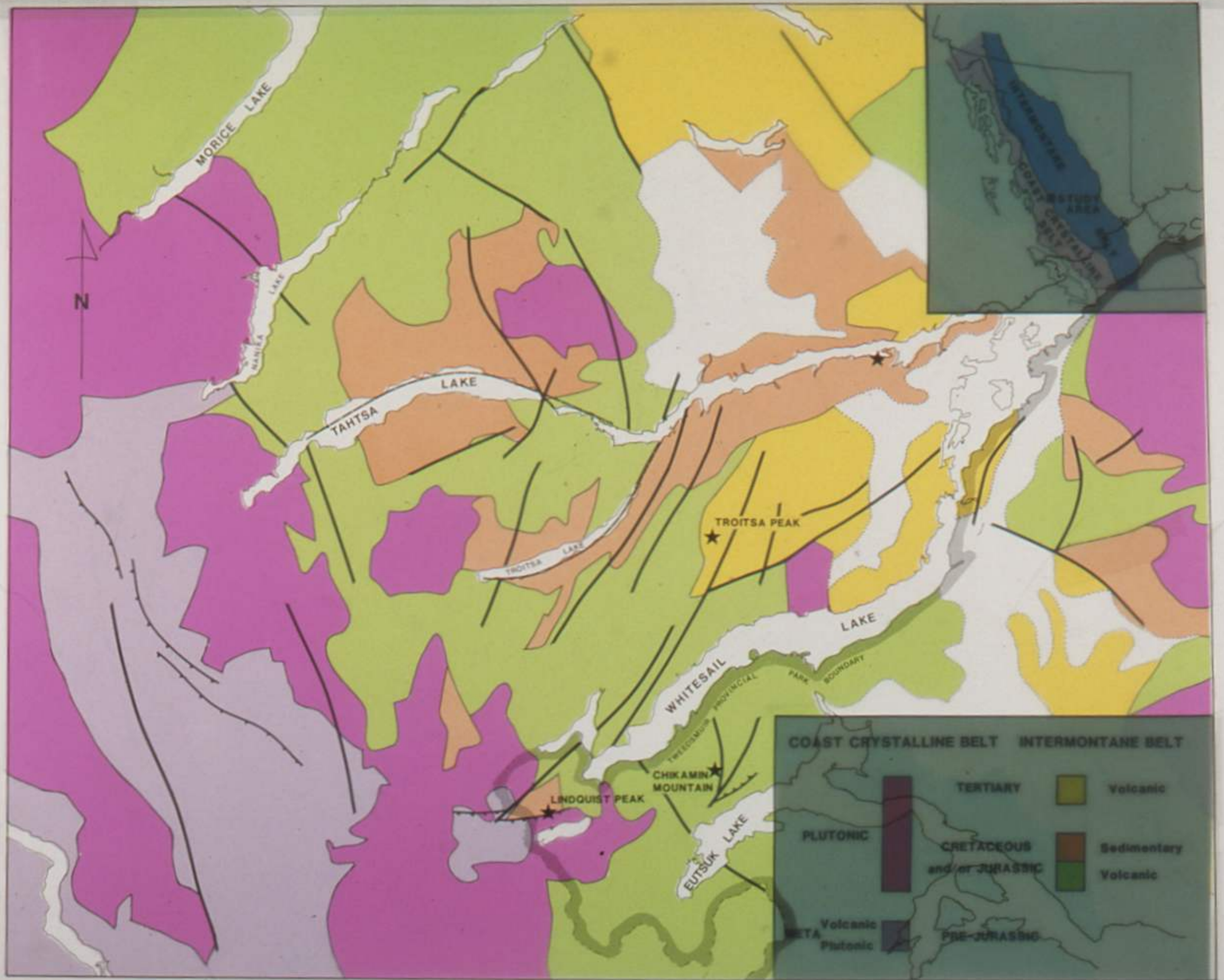


# DEER HORN PROSPECT Au AND Ag TELLURIDES VEINS ASSOCIATED WITH FLAT FAULTS



MODIFIED FROM PAPEZIK, 1957

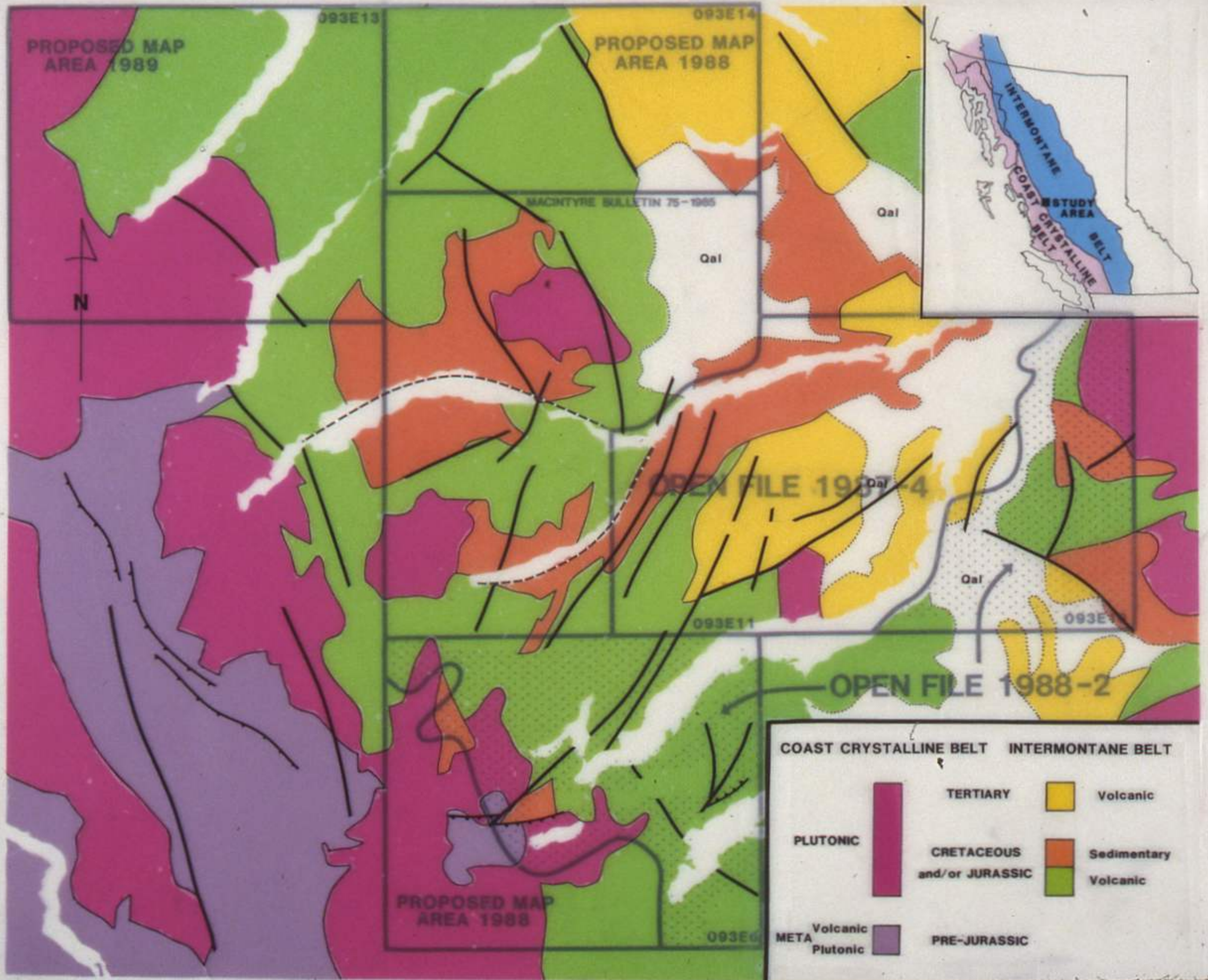














# LEGEND



**TERTIARY  
VOLCANICS**



**MIDDLE CRETACEOUS AND  
MIDDLE JURASSIC  
SEDIMENTS**



**CRETACEOUS AND JURASSIC  
VOLCANICS**



**PRE-JURASSIC  
METAMORPHICS**



**CRETACEOUS AND TERTIARY  
INTRUSIONS**



**QUARTZ VEIN**



**THRUST FAULT**



**HIGH-ANGLE FAULT**



## LEGEND



**TERTIARY  
VOLCANICS**



**MIDDLE CRETACEOUS AND  
MIDDLE JURASSIC  
SEDIMENTS**



**CRETACEOUS AND JURASSIC  
VOLCANICS**



**PRE-JURASSIC  
METAMORPHICS**



**CRETACEOUS AND TERTIARY  
INTRUSIONS**



**QUARTZ VEIN**

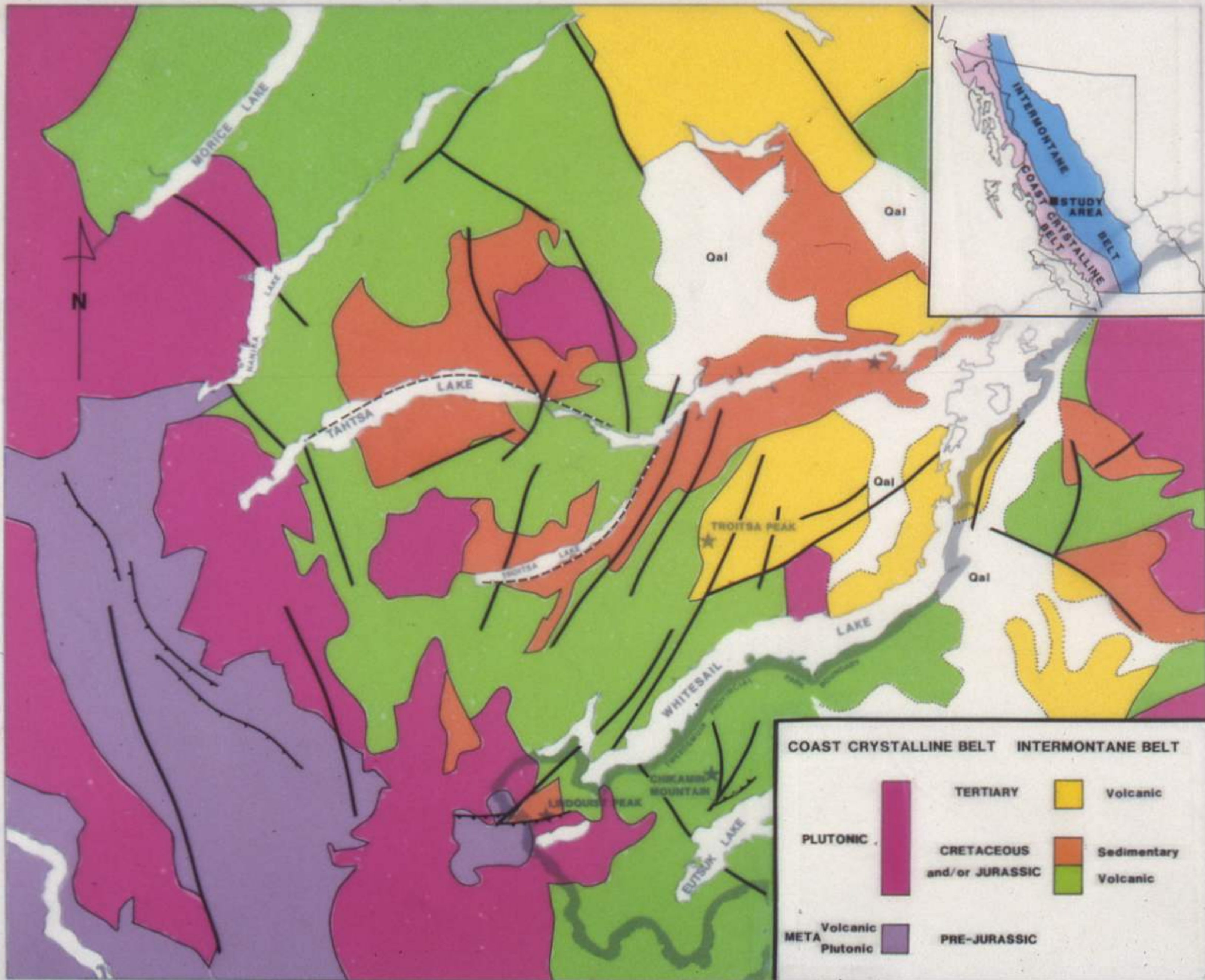


**THRUST FAULT**

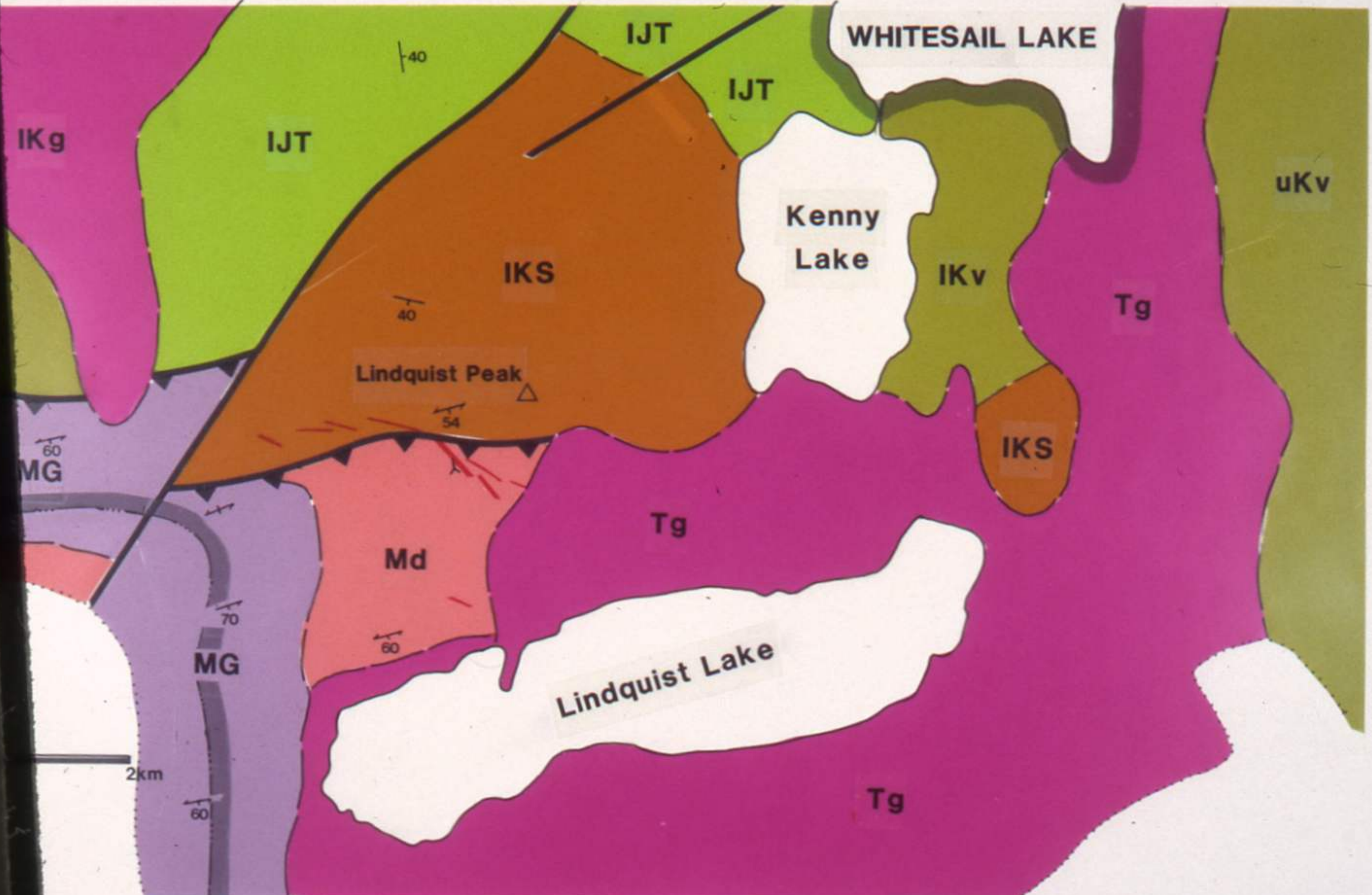


**HIGH-ANGLE FAULT**



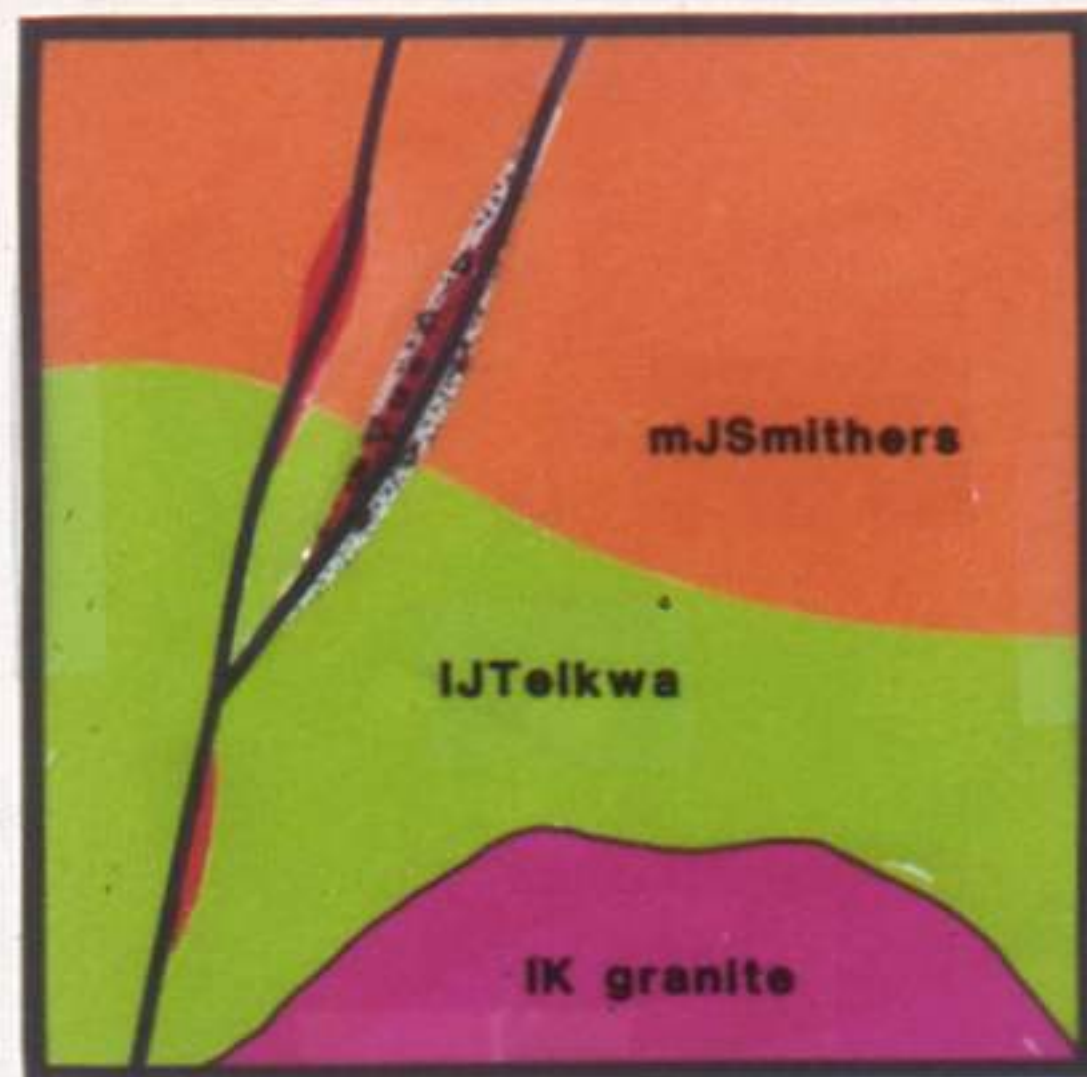




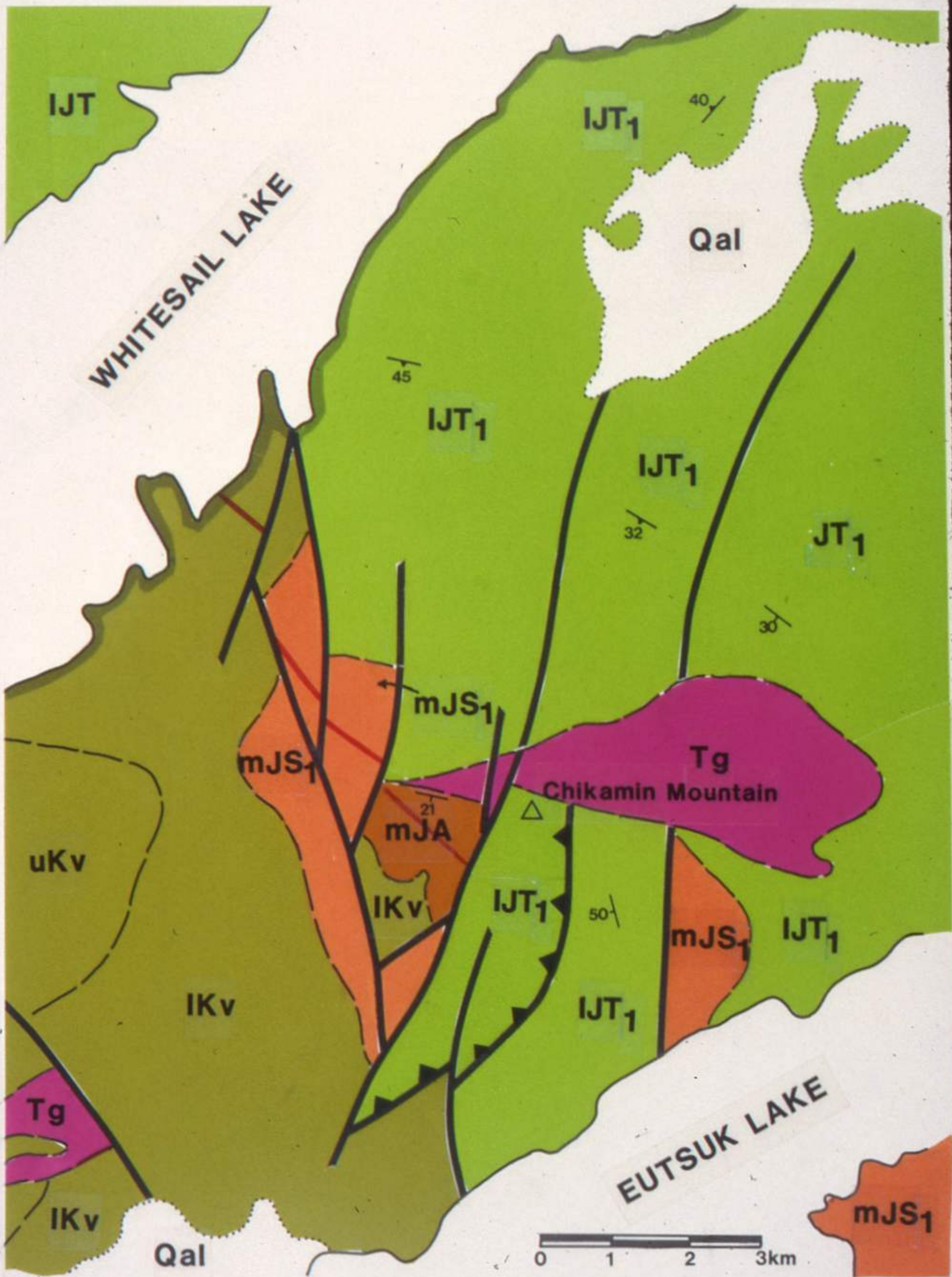




# POLYMETALLIC VEINS WITH BASE METALS AND SPORADIC ANOMALOUS GOLD AND/OR SILVER









PROPOSED MAP  
AREA 1989

PROPOSED MAP  
AREA 1988

093E13

093E14

MACINTYRE BULLETIN 75-1985

MORICE LAKE

LAKE

TAHTSA

LAKE

TROITSA LAKE

OPEN FILE 1987-4

TROITSA PEAK

093E11

LAKE

093E10

OPEN FILE 1988-2

WHITESAIL  
TWEEDSMUIR PROVINCIAL  
PARK BOUNDARY

CHIKAMIN  
MOUNTAIN

LINDQUIST PEAK

EUTSUK LAKE

PROPOSED MAP  
AREA 1988

093E6

