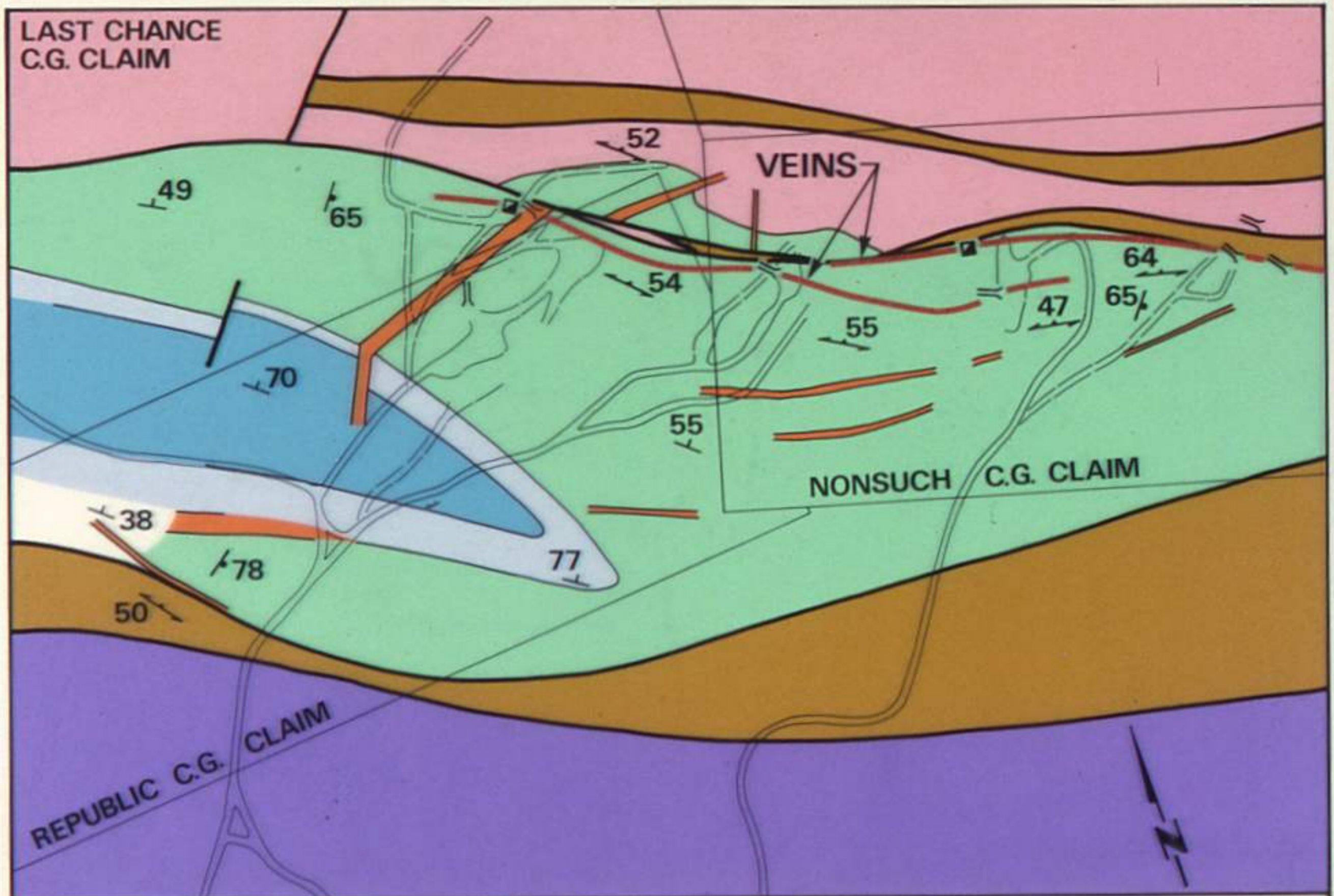


GEOLOGY OF THE SKOMAC MINE



BEDDED ROCKS

ATTWOOD GP

CONGL & ST/SILTY ARG WITH
CARB CLASTS/BLACK ARG &
SLATES

KNOB HILL GP

METAQUARTZITE

INTRUSIVE ROCKS

FELSIC DYKES

SERPENTINE

DIORITE

SHAFT.....=

PORTAL.....■

0 km 120