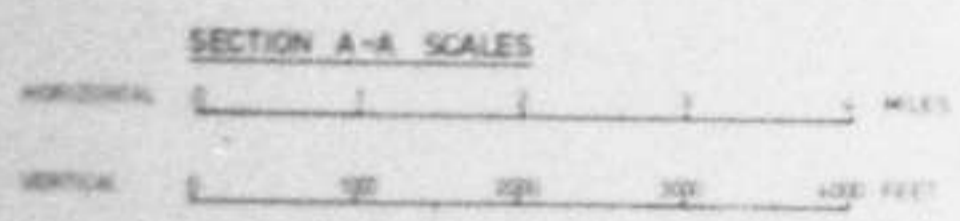


GENERALISED SECTION THROUGH THE ILLAWARRA COAL MEASURES
IN THE WESTERN COALFIELD
(NOT TO SCALE)



SEAM THICKNESS & INTERSEAM INTERVAL

SEAM	Thickness & Interval
KATOOMBA SEAM	1 to 12'
WOODFORD SEAM	25 to 40'
MIDDLERIVER SEAM	1 to 6'
(OIL SHALE SEAM)	20 to 40'
WOLGAN (IRONDALE) SEAM	8 to 40'
LIDSDALE (CAPERTEE) SEAM	8 to 300'
LITHGOW SEAM	4 to 8'
Marrangaroo Conglomerate	4 to 100'
	2 to 5'
	0 to 70'
	3 to 20'
	0 to 70'

CHARBON SUB-GROUP
NILE SUB-GROUP

NOTES & COMMERCIAL POTENTIAL OF COAL SEAM

COAL HIGH IN INHERENT ASH CONTENT AND READILY AMENABLE TO BENEFICIATION ON A COMMERCIAL BASIS (IE APPROX. 50% YIELD OF 10% ASH COAL) GOOD STEAMING COAL LOW IN SULPHUR CONTENT (< 0.5%)

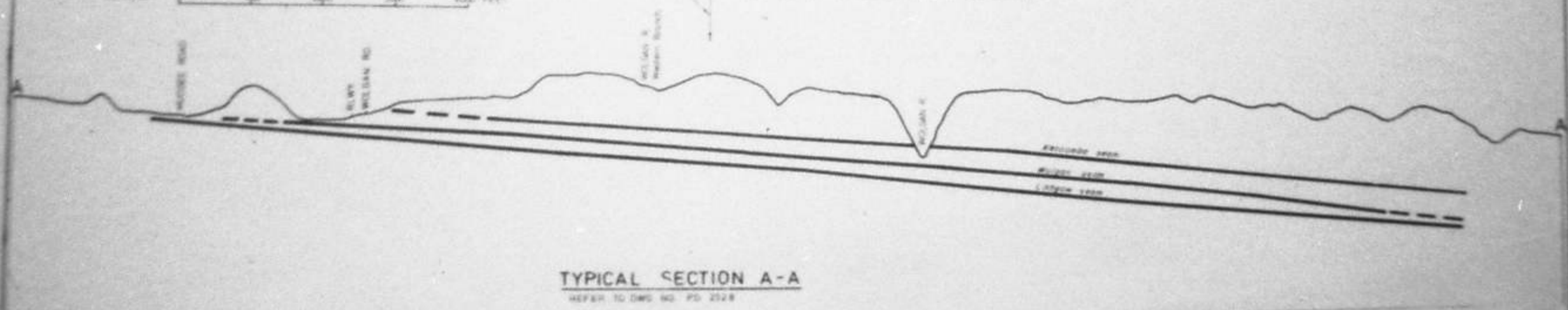
NO COMMERCIAL POTENTIAL

THICK BUT VERY BANDED SEAM VERY HIGH ASH CONTENT POSSESSES LITTLE COMMERCIAL POTENTIAL

VERY BANDED SEAM BUT AMENABLE TO BENEFICIATION TO PRODUCE A HIGH QUALITY SOFT COAL (YIELD APPROX. 50%) MAY ALSO PRODUCE A 30% ASH CONTENT MIDDLING FRACTION

UPPER SPLIT OF LITHGOW SEAM PRESENT MAINLY ADJACENT TO OUTCROP OF COAL MEASURES HAS BEEN MINED IN THE PAST VERY BANDED & HIGH INHERENT ASH CONTENT POOR QUALITY STEAMING COAL

PRINCIPLE COMMERCIAL SEAM EXTENSIVELY MINED PRODUCES TYPICAL STEAMING COAL IN PLACES AMENABLE TO BENEFICIATION TO PRODUCE A 10% ASH CONTENT FRACTION WHICH MAY BE SLIGHTLY COKING (BSI 1b 6% AVERAGE 1%)

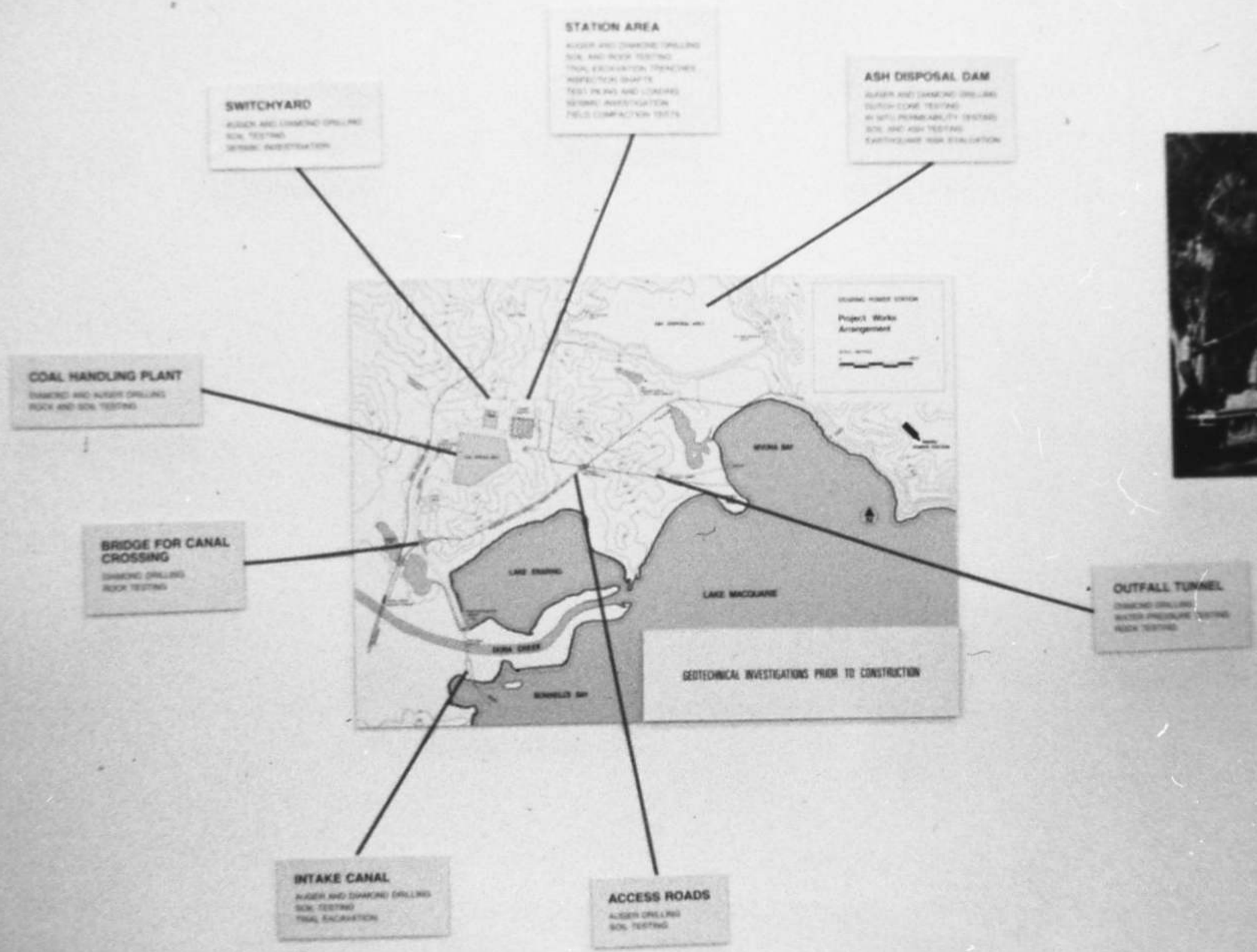


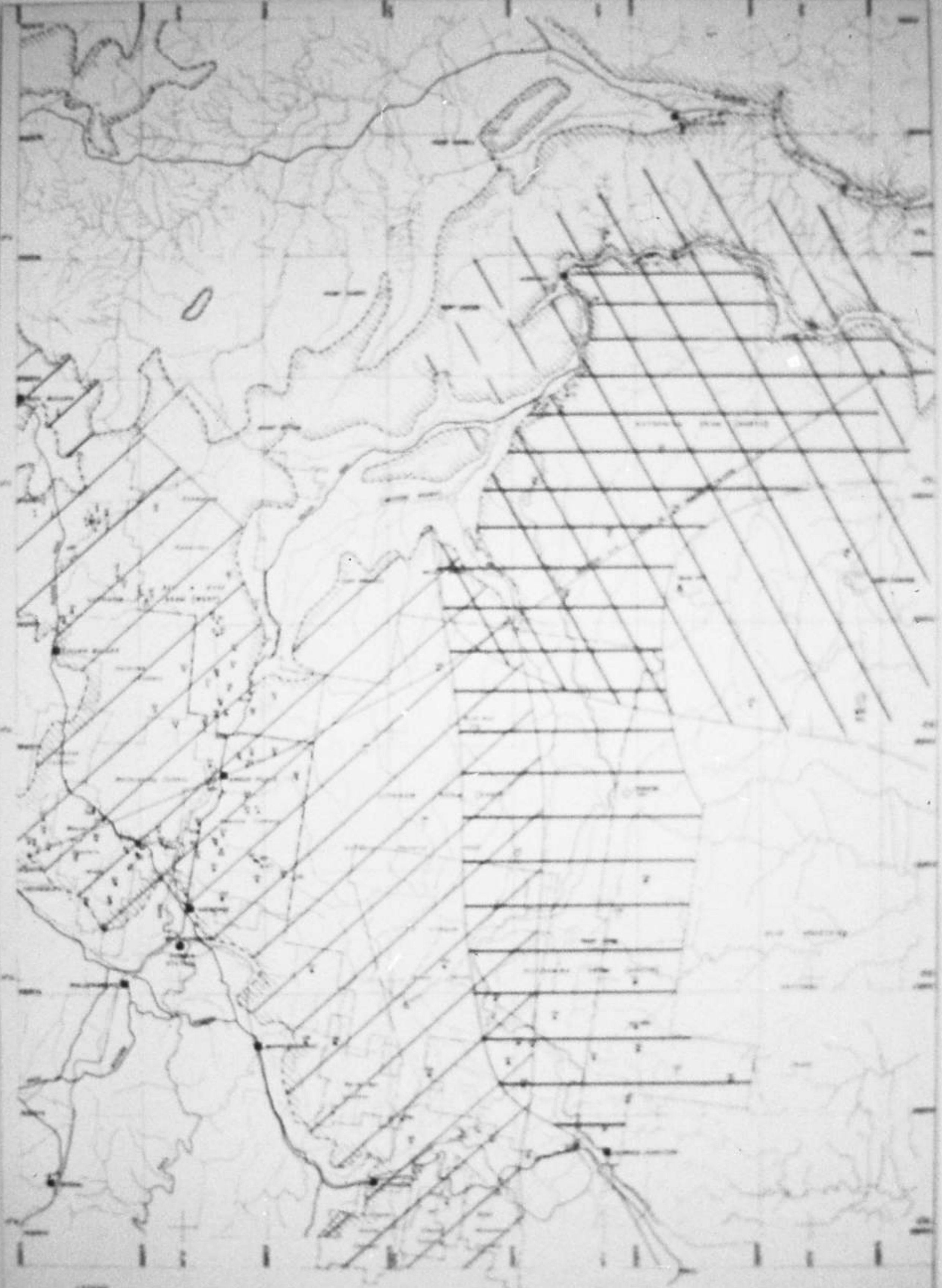
DRAWN CHECKED TCD CAN	N A N N CAN	THE ELECTRICITY COMMISSION OF N.S.W. POWER DEVELOPMENT DIVISION		WESTERN COALFIELD COAL RESOURCES INVESTIGATION TYPICAL SECTION			
		 N.B. Hall MANG		DATE PD 2536	C		











LEGENDA

- (thick line) — Estrada principal
- - - - - (dashed line) - Estrada secundaria
- (thin line) — Estrada de terra
- (dotted line) — Estrada de ferro
- (solid line with cross-ticks) — Estrada de trem
- (dashed line with cross-ticks) — Estrada de bonito
- (solid line with dots) — Estrada de pedregal
- (solid line with vertical ticks) — Estrada de pedra
- (solid line with horizontal ticks) — Estrada de madeira
- (solid line with diagonal ticks) — Estrada de pau-de-rosa
- (solid line with wavy ticks) — Estrada de sapo
- (solid line with zigzag ticks) — Estrada de canoa
- (solid line with irregular ticks) — Estrada de mato
- (solid line with small circles) — Estrada de lago
- (solid line with larger circles) — Estrada de rio
- (solid line with small squares) — Estrada de campo
- (solid line with larger squares) — Estrada de fazenda
- (solid line with small triangles) — Estrada de vila
- (solid line with larger triangles) — Estrada de cidade
- (solid line with small diamonds) — Estrada de fazenda pequena
- (solid line with larger diamonds) — Estrada de fazenda grande
- (solid line with small stars) — Estrada de fazenda muito grande
- (solid line with larger stars) — Estrada de fazenda muito muito grande
- (solid line with small crosses) — Estrada de fazenda muito muito muito grande
- (solid line with larger crosses) — Estrada de fazenda muito muito muito muito grande

LEGENDA DE SÍMBOLOS DE SÍMBOLOS

- (solid line) — Estrada principal
- (dashed line) — Estrada secundaria
- (solid line with cross-ticks) — Estrada de trem
- (dashed line with cross-ticks) — Estrada de bonito
- (solid line with dots) — Estrada de pedregal
- (solid line with vertical ticks) — Estrada de pedra
- (solid line with horizontal ticks) — Estrada de madeira
- (solid line with diagonal ticks) — Estrada de pau-de-rosa
- (solid line with wavy ticks) — Estrada de sapo
- (solid line with zigzag ticks) — Estrada de canoa
- (solid line with irregular ticks) — Estrada de mato
- (solid line with small circles) — Estrada de lago
- (solid line with larger circles) — Estrada de rio
- (solid line with small squares) — Estrada de campo
- (solid line with larger squares) — Estrada de fazenda
- (solid line with small triangles) — Estrada de vila
- (solid line with larger triangles) — Estrada de cidade
- (solid line with small diamonds) — Estrada de fazenda pequena
- (solid line with larger diamonds) — Estrada de fazenda grande
- (solid line with small stars) — Estrada de fazenda muito grande
- (solid line with larger stars) — Estrada de fazenda muito muito grande
- (solid line with small crosses) — Estrada de fazenda muito muito muito grande
- (solid line with larger crosses) — Estrada de fazenda muito muito muito muito grande



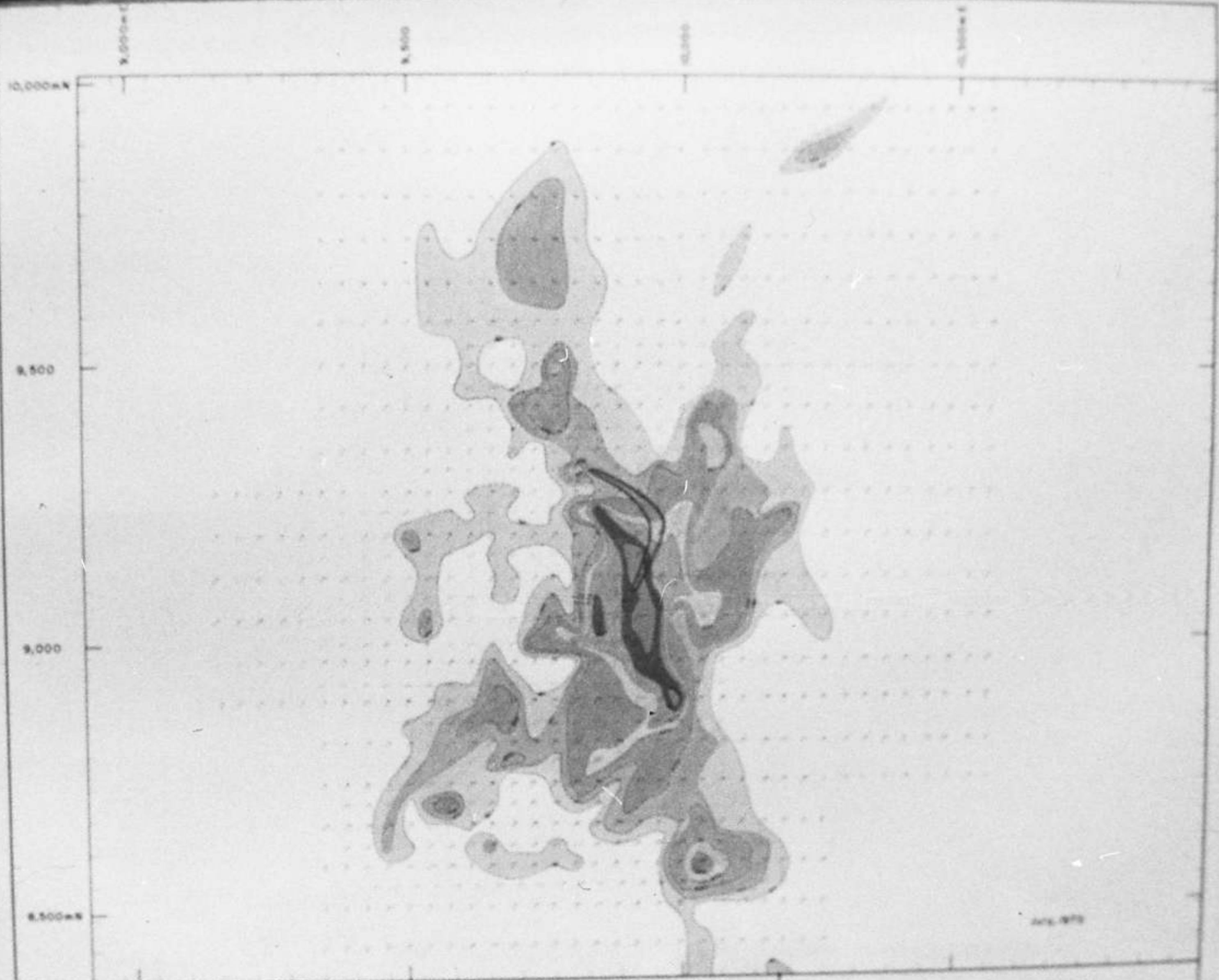
Map of the region of ...
 Scale: 1:50,000
 Date: 1915
 Author: ...



REFERENCE




- Spot heights which are shown on the map are a part of the Great Northern Seam or near the equivalent horizon.
- Contour lines of 1000 feet (approximate) are shown on the map.
- Contour lines of 500 feet are shown on the map.
- Contour lines of 250 feet are shown on the map.
- Contour lines of 100 feet are shown on the map.
- Contour lines of 50 feet are shown on the map.
- Contour lines of 25 feet are shown on the map.
- Contour lines of 10 feet are shown on the map.
- Contour lines of 5 feet are shown on the map.
- Contour lines of 2 feet are shown on the map.
- Contour lines of 1 foot are shown on the map.

**LAKE MACQUARIE & TUGGERAH LAKES
GREAT NORTHERN SEAM
STRUCTURE CONTOURS**






Aug. 1973


REFERENCE

-  50-100ppm
-  100-200ppm
-  200-400ppm

ANALYSES BY ATOMIC ABSORPTION SPECTROMETER

-  400-600ppm
-  600-1,000ppm
-  1,000-2,000ppm

-  >2,000ppm

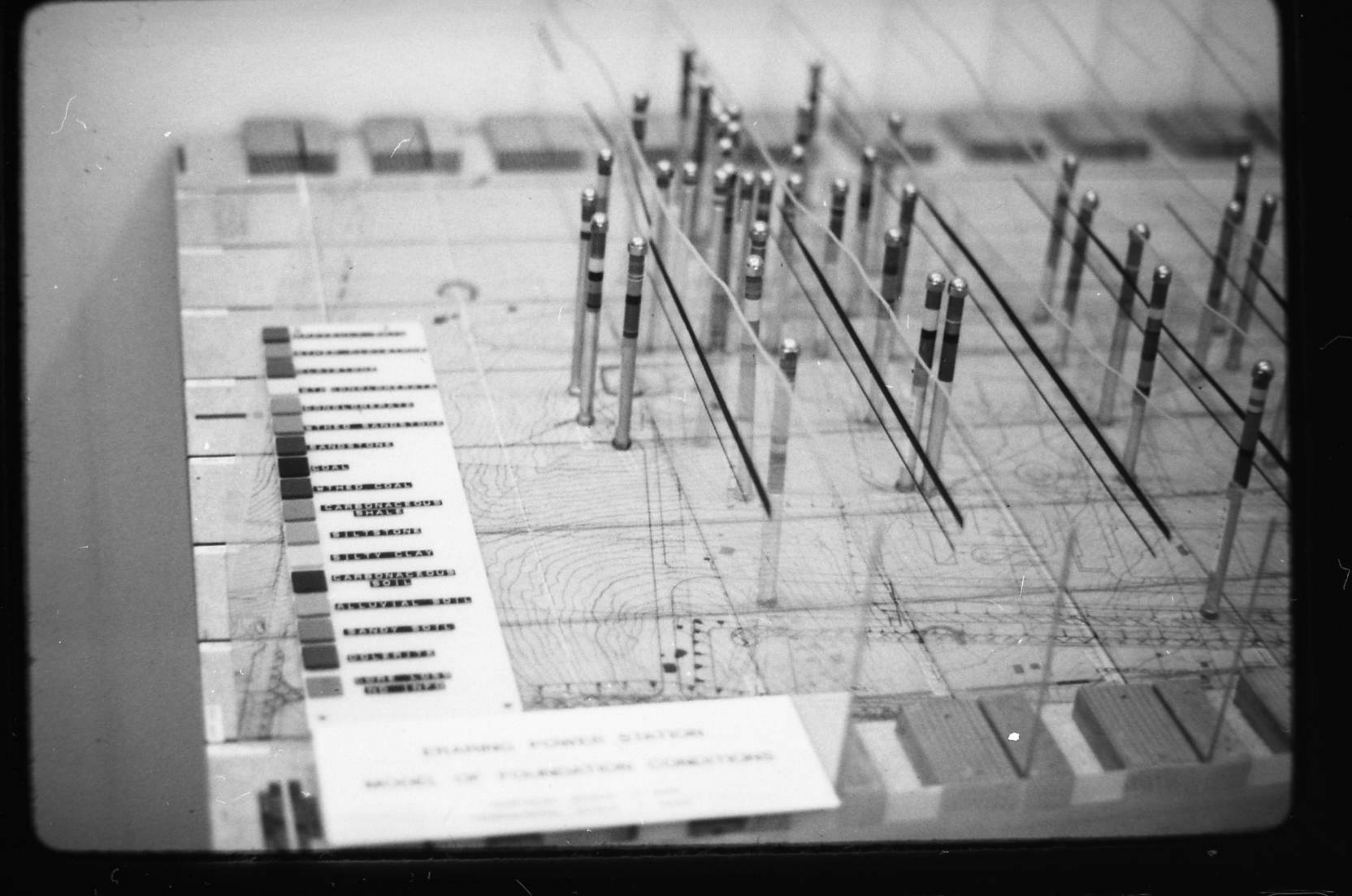
 Gossan - near surface expression of complex massive sulphides ore body

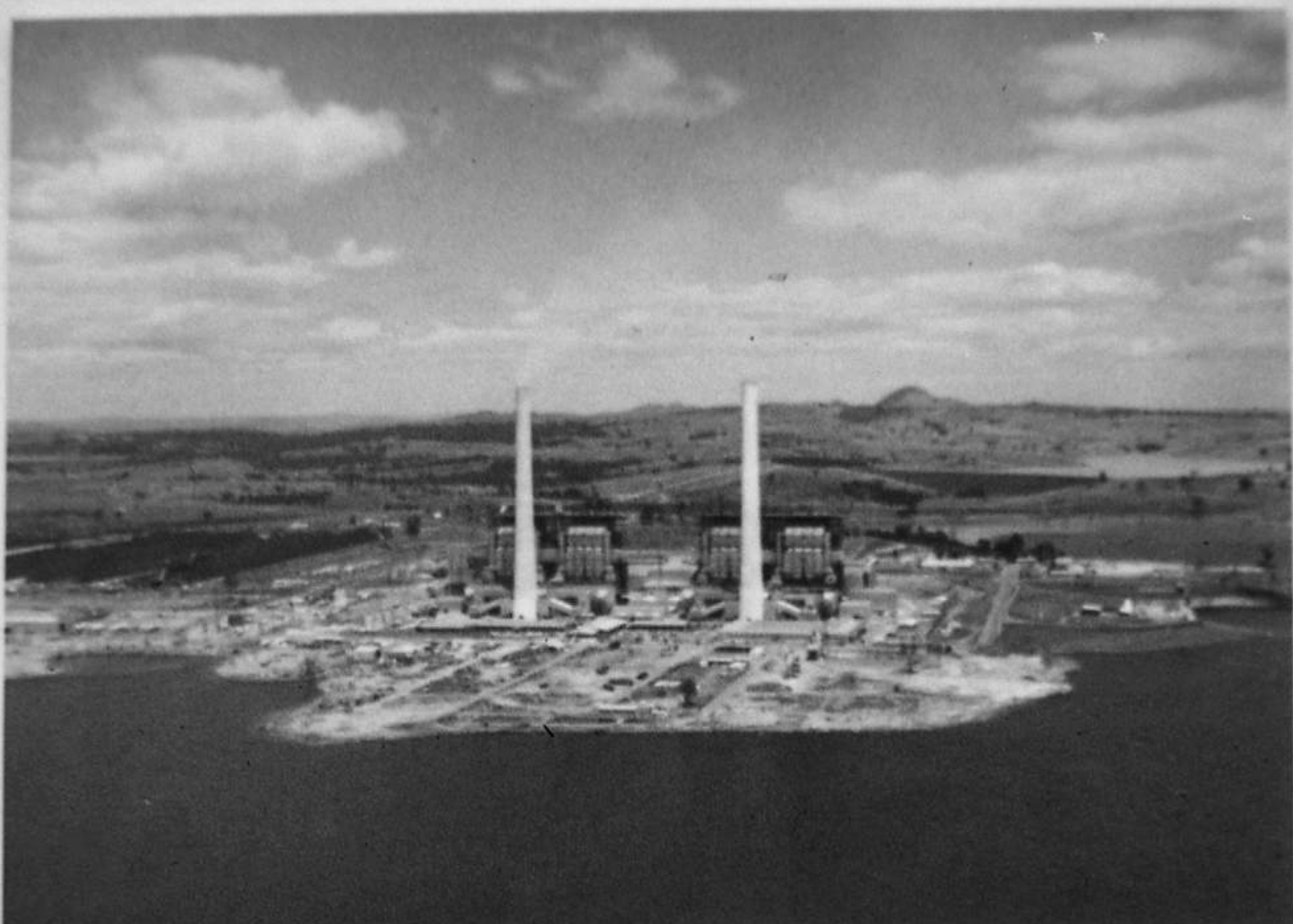
GRID GEOCHEMISTRY

Grid sample spacing 38.10m (250ft) x 76.20m (250ft)
 Fill in sample spacing 38.10m x 38.10m
 Copper results (ppm)

1. FOUNDATION
2. FOUNDATION
3. FOUNDATION
4. FOUNDATION
5. FOUNDATION
6. FOUNDATION
7. FOUNDATION
8. FOUNDATION
9. FOUNDATION
10. FOUNDATION
11. FOUNDATION
12. FOUNDATION
13. FOUNDATION
14. FOUNDATION
15. FOUNDATION
16. FOUNDATION
17. FOUNDATION
18. FOUNDATION
19. FOUNDATION
20. FOUNDATION
21. FOUNDATION
22. FOUNDATION
23. FOUNDATION
24. FOUNDATION
25. FOUNDATION
26. FOUNDATION
27. FOUNDATION
28. FOUNDATION
29. FOUNDATION
30. FOUNDATION
31. FOUNDATION
32. FOUNDATION
33. FOUNDATION
34. FOUNDATION
35. FOUNDATION
36. FOUNDATION
37. FOUNDATION
38. FOUNDATION
39. FOUNDATION
40. FOUNDATION
41. FOUNDATION
42. FOUNDATION
43. FOUNDATION
44. FOUNDATION
45. FOUNDATION
46. FOUNDATION
47. FOUNDATION
48. FOUNDATION
49. FOUNDATION
50. FOUNDATION

TRAINING POWER SYSTEM
SCHOOL OF ELECTRICAL ENGINEERING



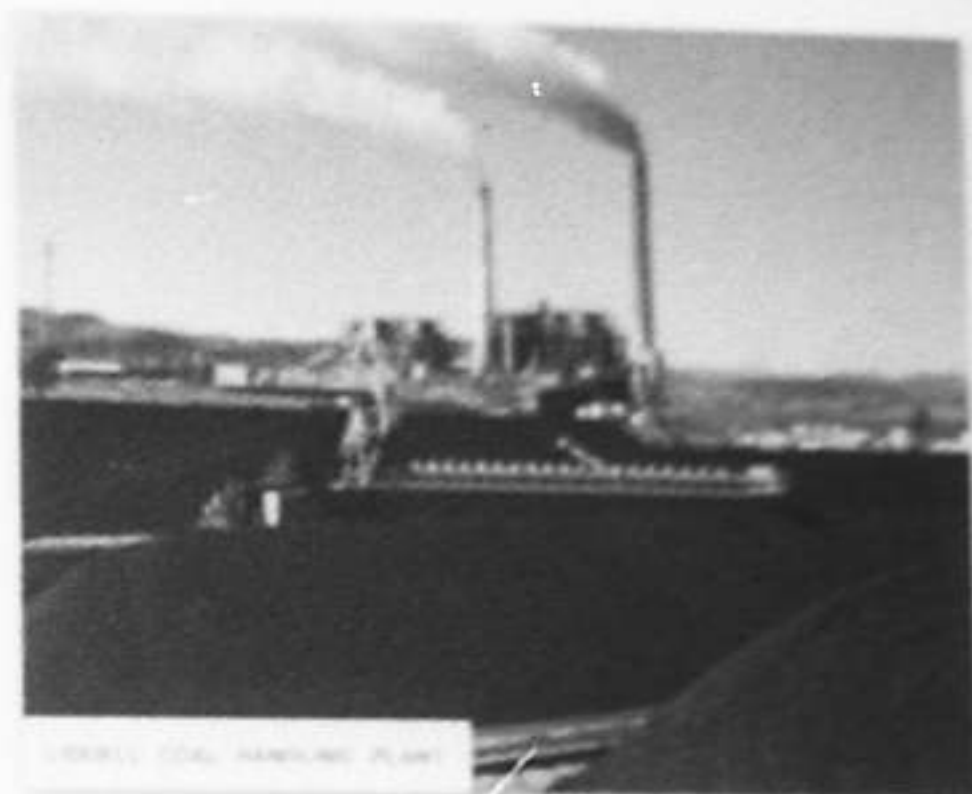
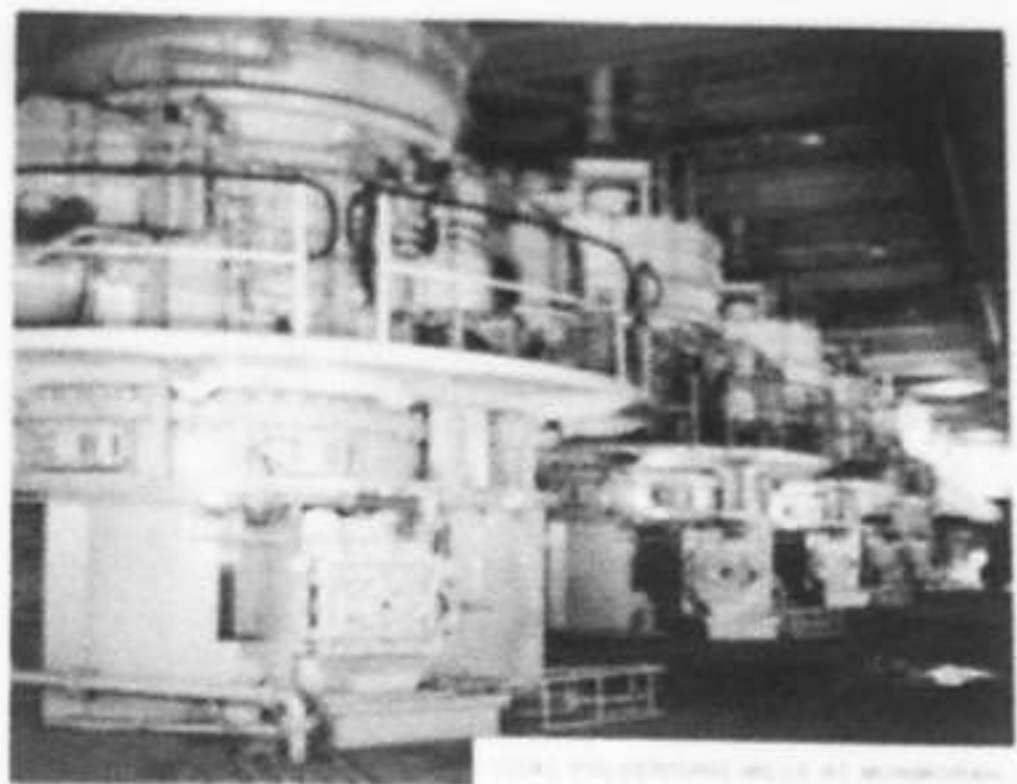


LIDDELL POWER STATION

Coal supplied by
 RAVENSWORTH NO. 2 O/C COSTAIN PTY. LTD.
 SWAMP CREEK HEBDEN MINING CO. PTY. LTD.

COAL PRODUCTION 1975-1976

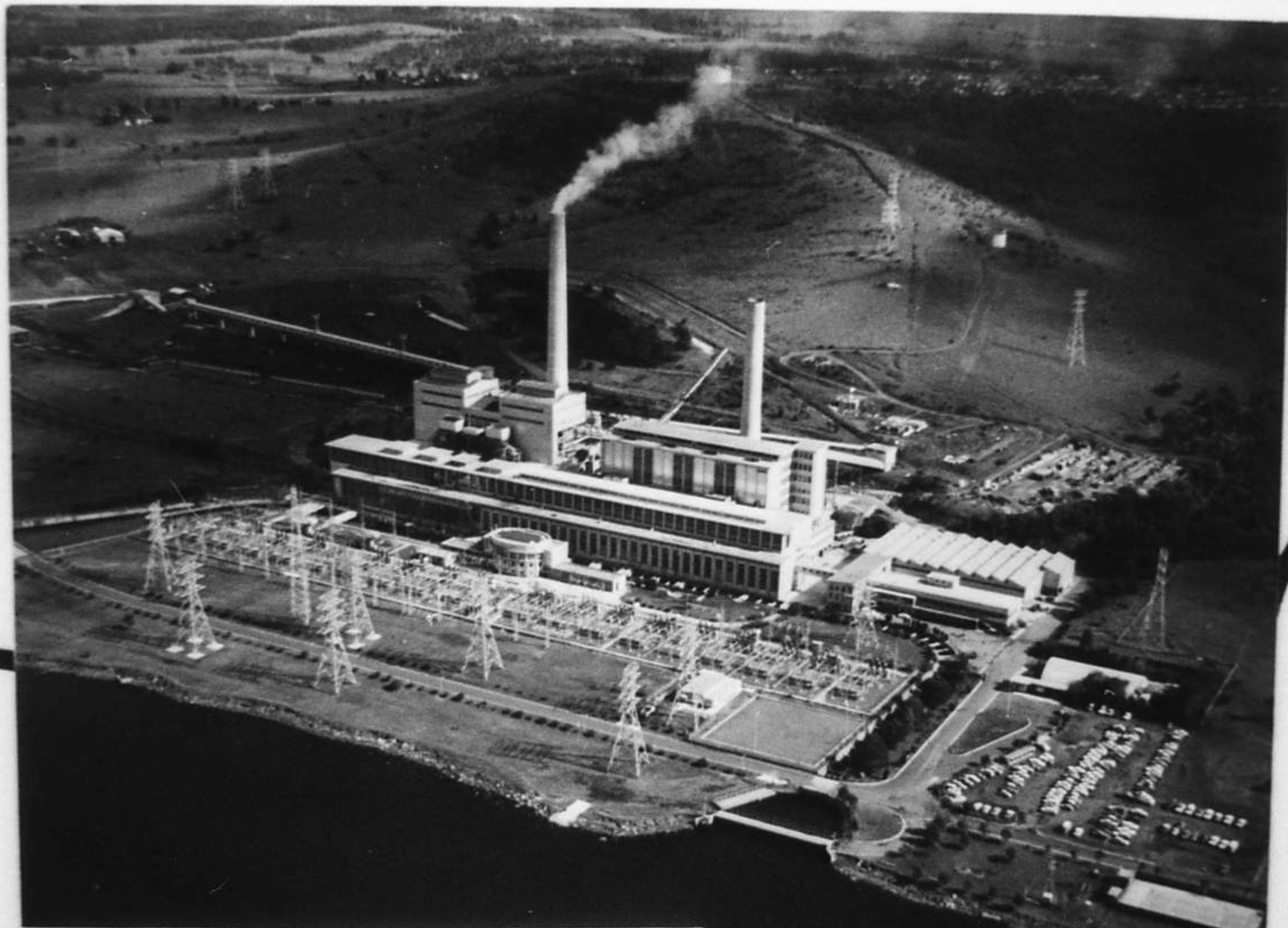
	MILLION TONNES
COAL PRODUCED BY NINE E.C. MINES	5.4
COAL PURCHASED FROM OTHER COLLIERIES — OPEN CUT	4.2
UNDERGROUND	0.7
COAL DELIVERED TO POWER STATIONS	9.1
COAL SUPPLIED TO OTHER MARKETS BY E.C. (Mostly Coking Coal)	1.2
EMPLOYEES IN COMMISSION MINES — 2,300	





ENVIRONMENTAL MAP 2
COAST GUARD MARINE
MARINE ENVIRONMENTAL MAP OF THE
WATERWAYS OF THE COAST
NO. 1/1988





TALLAWARRA POWER STATION

Coal supplied by:
HUNTLEY

HUNTLEY COLLIERY PTY. LTD

REVENSWORTH NO. 2 OPEN-CUT MINE

MINING OF SANDWATER BEAM FOR LIDDELL

























