

SULLIVAN-ALDRIDGE PROJECT

T. Höy, J. Lydon, B. Turner

REGIONAL SETTING



Regional geological map showing various geological units in different colors. A legend on the right side of the map identifies the units: Blue (Mylonitic schist), Yellow (Gneiss), Orange (Granite), and Green (Sedimentary rocks).

MOYIE SILLS

EMPLACEMENT



TECTONICS LATE PURCELL TIME

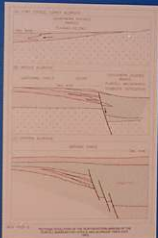


ALTERATION



TECTONICS

EARLY PURCELL TIME



BULLETIN 84

SULLIVAN MINE AREA

SULLIVAN - NORTH STAR CORRIDOR



MINERALOGY

Sample No.	Location	Mineralogy
1	Sullivan Mine	Pyrite, Magnetite, Hematite, Sphalerite, Galena, Lead, Silver, Copper, Zinc, Iron, Manganese, Nickel, Cobalt, Arsenic, Antimony, Bismuth, Vanadium, Molybdenum, Uranium, Thorium, Radium, Potassium, Sodium, Calcium, Magnesium, Aluminum, Silicon, Oxygen, Hydrogen, Carbon, Nitrogen, Fluorine, Chlorine, Sulfur, Phosphorus, Iodine, Bromine, Selenium, Tellurium, Zinc, Iron, Manganese, Nickel, Cobalt, Arsenic, Antimony, Bismuth, Vanadium, Molybdenum, Uranium, Thorium, Radium, Potassium, Sodium, Calcium, Magnesium, Aluminum, Silicon, Oxygen, Hydrogen, Carbon, Nitrogen, Fluorine, Chlorine, Sulfur, Phosphorus, Iodine, Bromine, Selenium, Tellurium.
2	North Star Mine	Pyrite, Magnetite, Hematite, Sphalerite, Galena, Lead, Silver, Copper, Zinc, Iron, Manganese, Nickel, Cobalt, Arsenic, Antimony, Bismuth, Vanadium, Molybdenum, Uranium, Thorium, Radium, Potassium, Sodium, Calcium, Magnesium, Aluminum, Silicon, Oxygen, Hydrogen, Carbon, Nitrogen, Fluorine, Chlorine, Sulfur, Phosphorus, Iodine, Bromine, Selenium, Tellurium.

MINERALOGY

ALTERATION



SULLIVAN ORE BODY



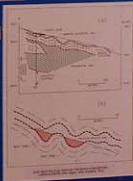
MODEL



NORTH STAR



NORTH STAR



OVERVIEW

OVERVIEW

OVERVIEW

OVERVIEW

OVERVIEW

OVERVIEW

OVERVIEW

OVERVIEW

1993
1994
1995
1996
1997
1998
1999
2000

Roundup 1993

501163