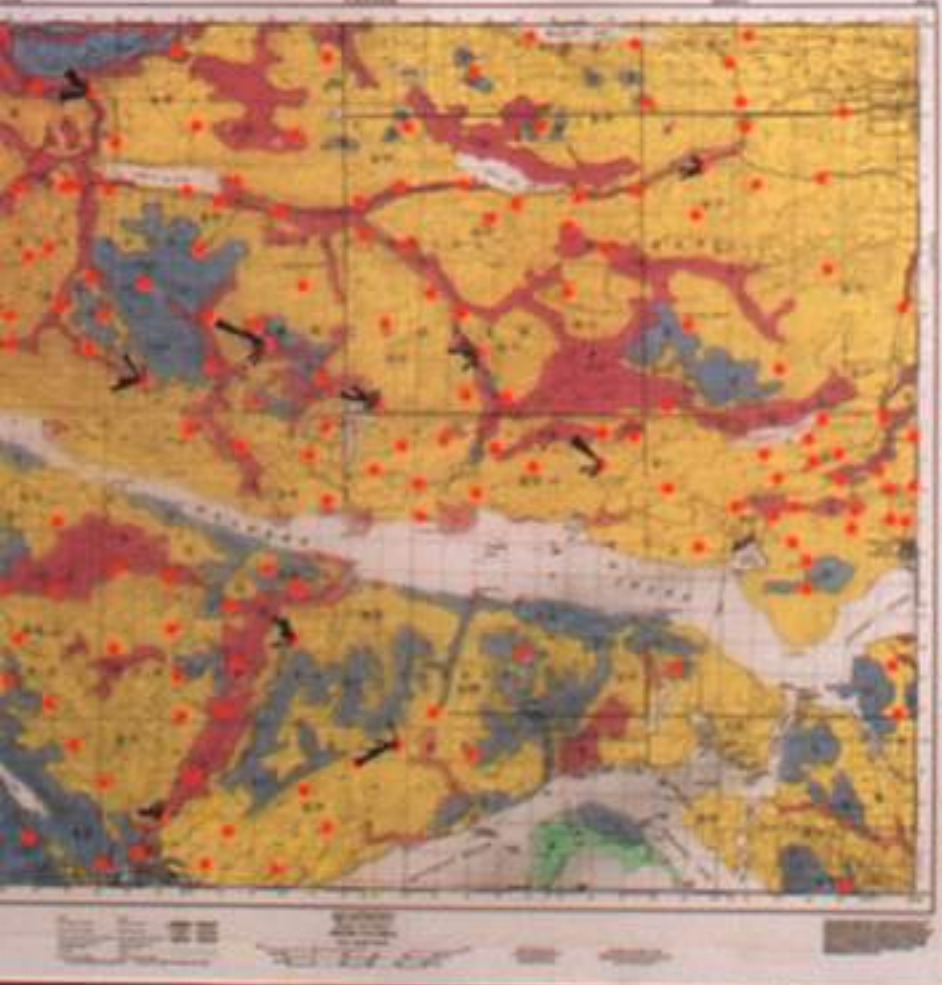


D. Kerr, S. Sibbick

DRIFT PROSPECTING IN THE QUATSINO AND MOUNT MILLIGAN AREAS

ENV

QUATSINO



BCSP
SURFICIAL GEOLOGY OF THE
QUATSINO AREA
1975
Scale 1:50,000



INTRODUCTION
The Quatsino area is situated in the north-western part of the province of British Columbia. It is bounded to the north by the Skeena River, to the east by the Bulkley River, and to the south by the Bulkley-Columbia Plateau. The area is characterized by a complex pattern of drift deposits and underlying bedrock.

METHODS
The Quatsino area was surveyed by airphoto interpretation and ground truthing. The ground truthing was done by walking the area and collecting samples for analysis. The results of the analysis are shown in the map.

RESULTS
The Quatsino area is characterized by a complex pattern of drift deposits. The drift deposits are composed of a variety of materials, including sand, silt, clay, and gravel. The drift deposits are distributed in a pattern that is controlled by the underlying bedrock and the local topography.



CONCLUSIONS
The Quatsino area is a complex geological area. The drift deposits are composed of a variety of materials, and their distribution is controlled by the underlying bedrock and the local topography. The results of the analysis show that the Quatsino area is a promising area for drift prospecting.

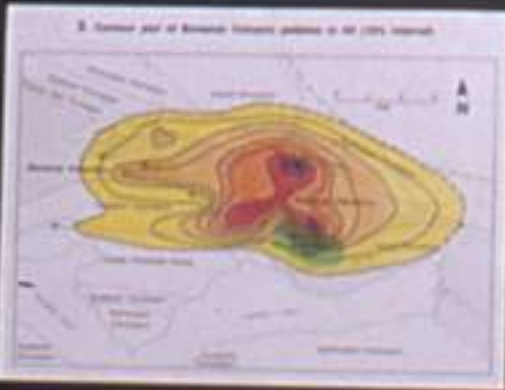


TABLE 1
CORRELATION OF QUATSINO AND MOUNT MILLIGAN AREAS

QUATSINO UNIT	MOUNT MILLIGAN UNIT
Q1	M1
Q2	M2
Q3	M3
Q4	M4
Q5	M5

MOUNT MILLIGAN



BCSP
SURFICIAL GEOLOGY OF THE
MOUNT MILLIGAN AREA
1975
Scale 1:50,000



MOUNT MILLIGAN PROJECT
The Mount Milligan project is a large-scale project that involves the development of a new open-pit mine. The project is located in the Mount Milligan area, which is characterized by a complex pattern of drift deposits and underlying bedrock. The project is expected to produce a significant amount of iron ore.

