

COALMONT COLLIERIES LTD.

PLAN

- showing -

N<sup>os</sup> 3, 4 and 5 MINES

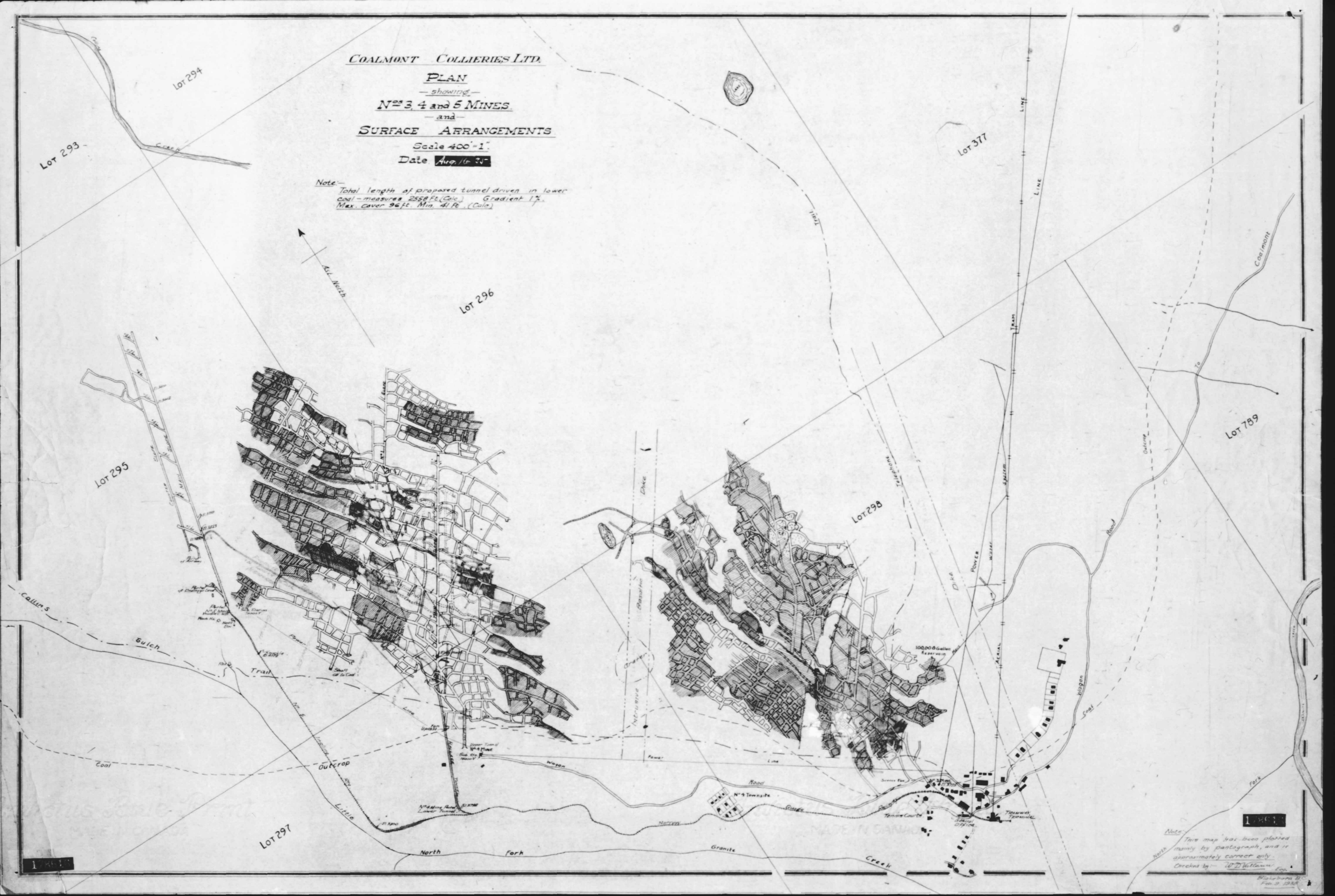
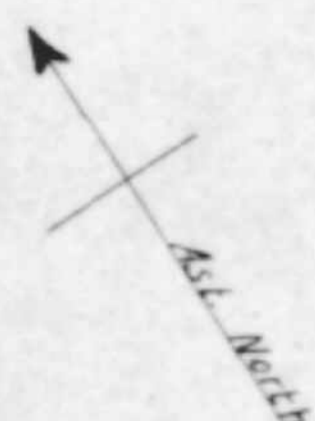
- and -

SURFACE ARRANGEMENTS

Scale 400'-1"

Date Aug. 16, 34

Note - Total length of proposed tunnel driven in lower coal - measures 2558 Ft. (Calc.) Gradient 1%. Max. cover 96 ft. Min. 41 Ft. (Calc.)



Note - This map has been plotted mainly by pantograph, and is approximately correct only. Checked by - W. J. Williams, Eng.

1934

Blairburn B. Feb 3, 1935