

THE AGATES OF TURTLE VALLEY AND SQUILAX MT.



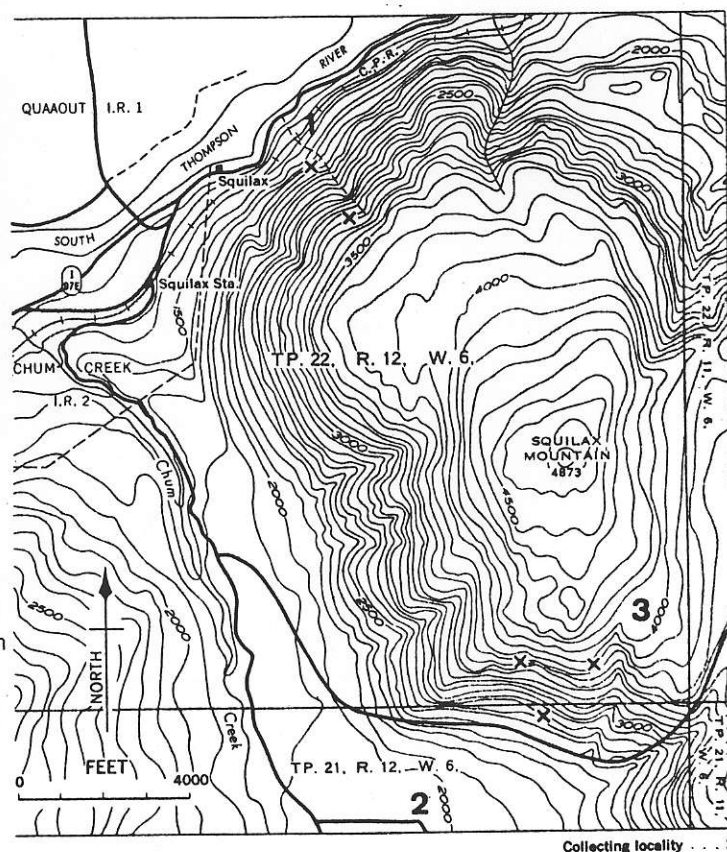
Even if there were no agates there, the country around Shuswap Lake, B.C. would be worth visiting. The lush vegetation in the valleys and beside the lake makes a pleasing contrast with the smooth hillsides. In the summer the climate is as close to ideal as can be found anywhere, with warm but comfortable days and cool sleepworthy nights.

Squilax Mountain rises to the south of the short Little River which joins Little Shuswap Lake with big Shuswap Lake, and which is actually part of the South Thompson River. Agate may be found at many places on the mountain and around its base, but much of it is rather ordinary stuff. There have been many gem quality agates found here, however, so do not give up just because your first few don't seem too exciting. There are three locations worth visiting on the mountain, two very accessible, and one not quite so accessible.

(1) Several creeks, dry in summer, carry agates, and other rocks of course, down the north side of Squilax Mountain. One of these runs into a large culvert under the Trans Canada Highway near the entrance to Little River Fishing Camp, which is a bit more than a mile west of the overhead bridge leading to Adams Lake. Following this creek bed up the mountain, and working in the rubble from nearby slides, will produce lots of grey-blue agate and, if your eyesight is good, an occasional unbroken nodule.

(2) The flat farmlands on the south side of the mountain will yield agate of various grades for years to come. Just park beside the road (see map reference #2) and start looking. When going onto private property it is advisable to ask permission.

(3) The third location may involve some walking and climbing, depending on the condition of the logging road which traverses the south side of the mountain. There are several forks in this road which do not appear on the map, being just off the right hand, or east, side of the page. The present road leads eventually to the top of the mountain and over the past few years a good number of rock gatherers have made it all the way up, either on foot or with the use of a Land Rover. Whether the material from the top is any better than that found on the way up is debatable. One thing is certain, the view from the top is tremendous.



Collecting locality . . . X

SHUSWAP LAKES AREA: Agate.