

Canadian ...

Aug 1964

16.

The Canadian ROCKHOUND

~~021274~~
021692

4 D

August 1964

Cinnabar and Rhodonite

at Red Lake B.C.

Bob Hill

Many rockhounds have already taken advantage of the information contained in the various Memoirs published by the Geological Survey of Canada by tracking down old leads and finding lapidary materials long since forgotten. My own success in this field had been very limited until I chanced to read Memoir 249 by W.E. Cockfield, published in 1961 covering the Nicola map area. This study mentions that pink chalcedony is associated with the mercury prospect at Hardie Hill near Red Lake. The pink color is caused by minute inclusions of cinnabar, according to the survey, and the prospect of finding such an attractive gem spurred several members of the North Shore Rock & Gem Club to make a journey to the area several years ago. Although we must have come within walking distance of the old prospect our original search failed, perhaps because of the heat of the day or some confusion over landmarks.

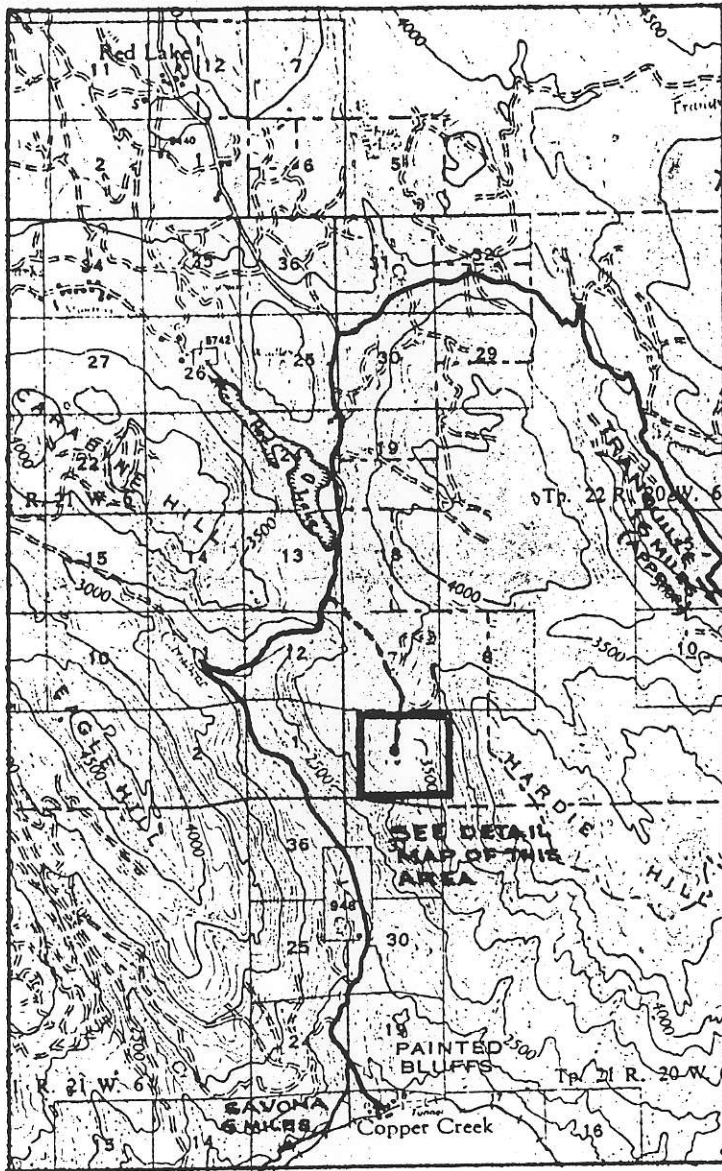
This spring we organized a hunt which was referred to at the time as the "Get Lost with Hill Expedition" and whereas we did get lost, we also managed to find the deposit. The material turned out to be good enough to justify the effort spent and although some of it is a little porous there is some with a pleasing red plume and as a bonus a good supply of pink rhodonite on the same location. The ten of us who made the trip did not have time to make a thorough examination of the property, I hasten to add, but we are confident that further exploration will be rewarding.

To get there, follow the Tranquille to Red Lake road to Red Lake and proceed past the lake until the road takes a sudden steep dip down off a plateau towards Copper Creek. At the bottom there is a decided triangle of roads and on the left a road leading back towards the Tranquille River. Follow this road until it terminates at an abandoned mill site. Hardie Hill is on the left, Dickson Hill is on the right, not more than 1000' away. The material was found just below the top of Hardie Hill and more particularly on the North West side where the material seemed to be a little better. Several cuts and trenches made some years ago make the digging relatively easy. We did not visit Dickson Hill or the adit there but left this for the next expedition.

I would definitely suggest leaving by continuing on to Savona as this road has a most spectacular view of Kamloops Lake and is no longer than going back the way you came. The roads in this area are inclined to be slippery in wet weather.



34



**CINNABAR
AND
RHODONITE
AT
RED LAKE, B.C.**

SCALE : 1" = 2 MILES

