

E. Ashby '79

1. S of Adit - Ankerite - Barite box 1 green matrix -
dk green frags (30%) elongate flattened || fol.
S, 124, 86° NE. 2' up to 3 cm.
1 prominent.
2. Blk cherty arg?
3. Cherty rock below ls
4. Ls tabular thin chert
5. MS - but tightly folded wrx
6. MS frags - chert + sulf.
7. Ls + chert here one had 20 cm thick
S, 150, 85° SW.

021643

- Sunday

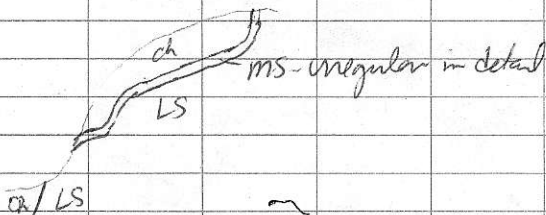
8. 2m 5-75 cm chert w abundant po - locally
massive sl magnetic po. Not all a layer.
some offshooting veins
9. 3270' SW from 8. Abund chert layers.
dk green - grey - black 2-30 cm thick
138, vertical.
Zn ~ 50' wide
@ further than chertic LS 20-50 cm + 2-10 cm
chert. LS with strong fracture
- 10 @ 3330' small subhoriz fault 1/4 ~ 1 meter
3445' fault 092, 25° S
3425' - above fragmental LS - coarse
clastic frags 1-5 m + thin
chert layers

11. 3530 Po-Sl + gl pod - 3m x 30cm
 black chert + pods, druse sulf
 at angle to S0
12. S0 locally contorted 008, 80 NW
13. 3660 MS - lens 2m x 30cm - wedges out
 S0 130, 68 SW
14. 3680 - Black Chert - grey chert w
 abundant limonite after po
 local mass of gl patch 15cm across
14. Zone 6 3165
 Zone of chert - with some zones abundant
 mass of patches - po, or sl
 Zone - 5' wide - 2m wide
15. Lower Glory Hole
 Dirty lt grey ± sulfides - some sh fractures
 155, 85 NE
16. Top of Glory Hole 4605'
 Contact to SW Andante lt grey epidote abundant
 buffaceous texture 5, 103, 60 SW
 thin LS to NW, platy
 the chert + LS, some sulfides
17. N end of Glory Hole show narrow zone
 SW high SL. then 10 moderate sulfides
 then low sulfides in chert - resample
18. Folded contact? LS + andante - fold
 axis plunges steeply NW $\approx 60^\circ$

North End out from camp.

20. White Chert 50/125, 85° SW

21. Showing 4 - Very irregular zone -
chert + sulfides, dessem. frags - one zone
2.2 m thick along contact w LS below.



22. TOP Glory Hole Area - E.

contact curved around dip varies down
to 50° SW up to vertical.

Cherty zone = ^{2.2 m} wide ^(thick) fairly continuous
locally MS lenses up to 1 m long by 40
cm wide at irregular angles to bedrock

Geochem: 1 - along upper contact - MS lenses
actually in LS with irregular dark chert

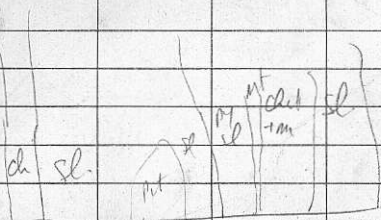
23. Andesite? vfg

24. Complex fold P2 - lat. F, 160, 22° SE

25. mm-dark stannite chert ± patches Gl up to
10 cm.

Zone 1

Sharp contact at base w/ LS-cherty ^{ing} (3)



Wed above camp

27 - 10'-20' zone dk weathering chert
+ mt, shod + py tough - grades up
into thin chert bed.

28 - gully - small showing shod-dwp? - sl clots
in LS

29 - on side - po - mt - det? - gl. in ls near chert

30 - in gully 30' wide zone x 0.5m skamy
Qtz + mt, act, py, gl

31 - pyritic (or po) on side - wide zone
above chert

32 - fld? in 2a - cant trace rose downhill
to NW - Mn - rd zone + sulfides very black
locally Mt., some Lst not replaced

33. Zone 6. mainly sl pyritic chert - Mn on
edges + mt local at SW side 6" hi honey sl
+ shod? below - 5' with moderate gl. in po
etc (act?). Resample - 7' width
- in LST, chert thinly bedded. zone appears to
crosscut LS bedding

fl py
scp

py
dike
py

mass?
dike?
Andes

gully

gully

sl
rhy

sl py ser
after rhy

some py
lenses

x py lenses

py
py

72
142

sl
py
py
py
py

sl
rhy

Tulsequah Chief

Hand
- dike
D.P.D.

Large ϕ dike to EW
camp -

~~to~~ rubble in dump
bedded py - sl

cherty rhy, pyritic rhy.
thin layers etc - 500' long
of rhy bx - layers to 10 cms long
- in part altered - to river

Rev. same zone as BB.

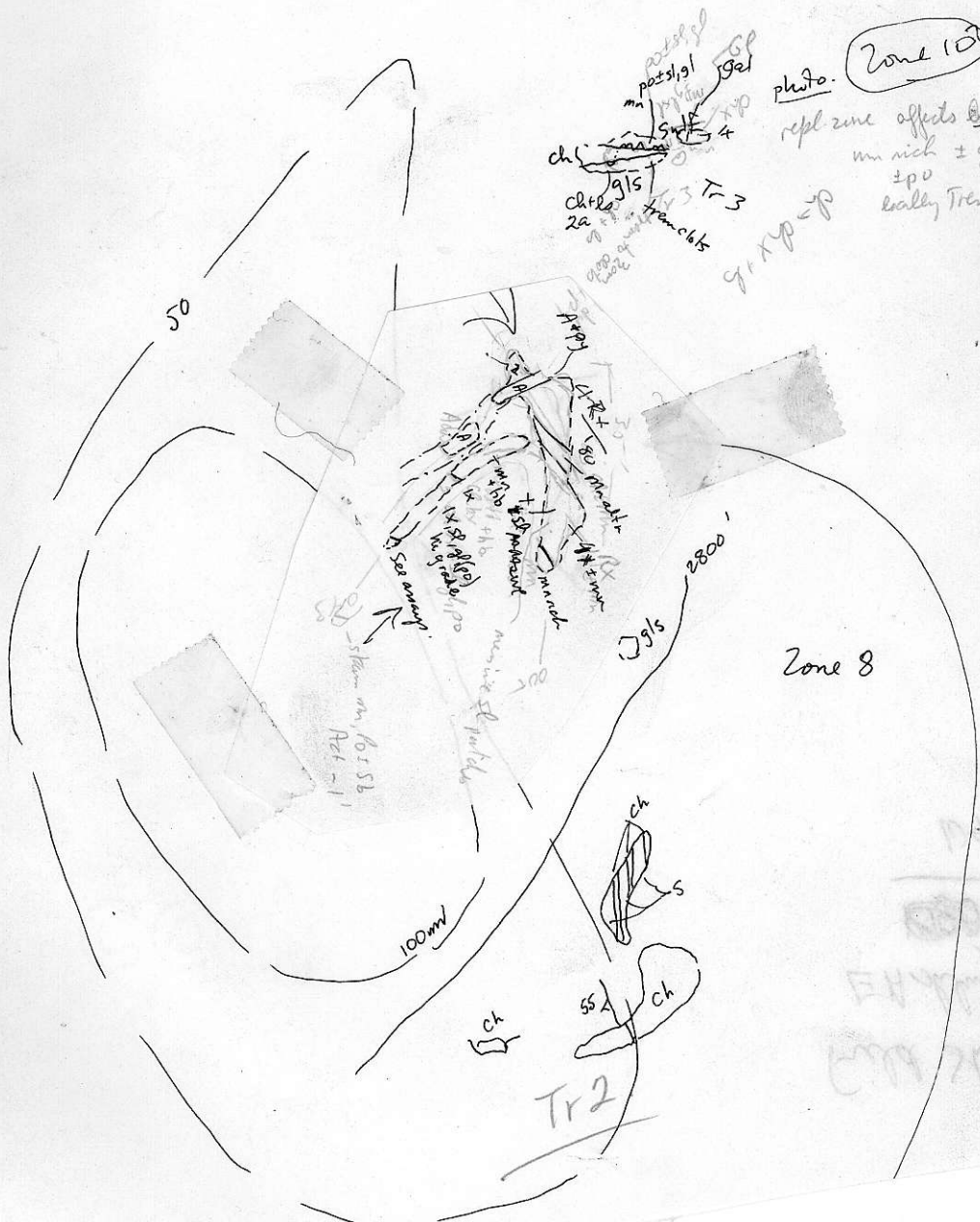


photo. **Zone 10**

repl zone affects beds irregularly
 m nich ± gl when shown
 ± pu
 bally Tr 2? altn lst.

Zone 8

ch
 gp
 Tr 3
 Tr 2

50

100m

Tr 2

836

422

Field Sheets

E Ashley

~~1980~~ 1979

109-K-11

+ 2275

±sulf
in
sil

ch

ch

A

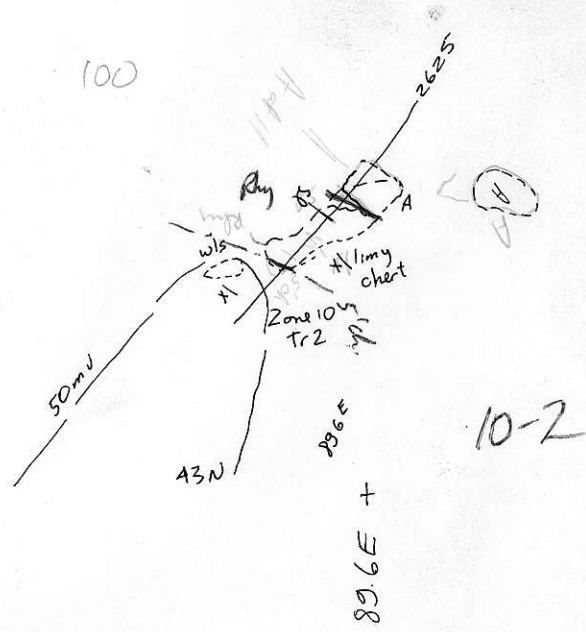
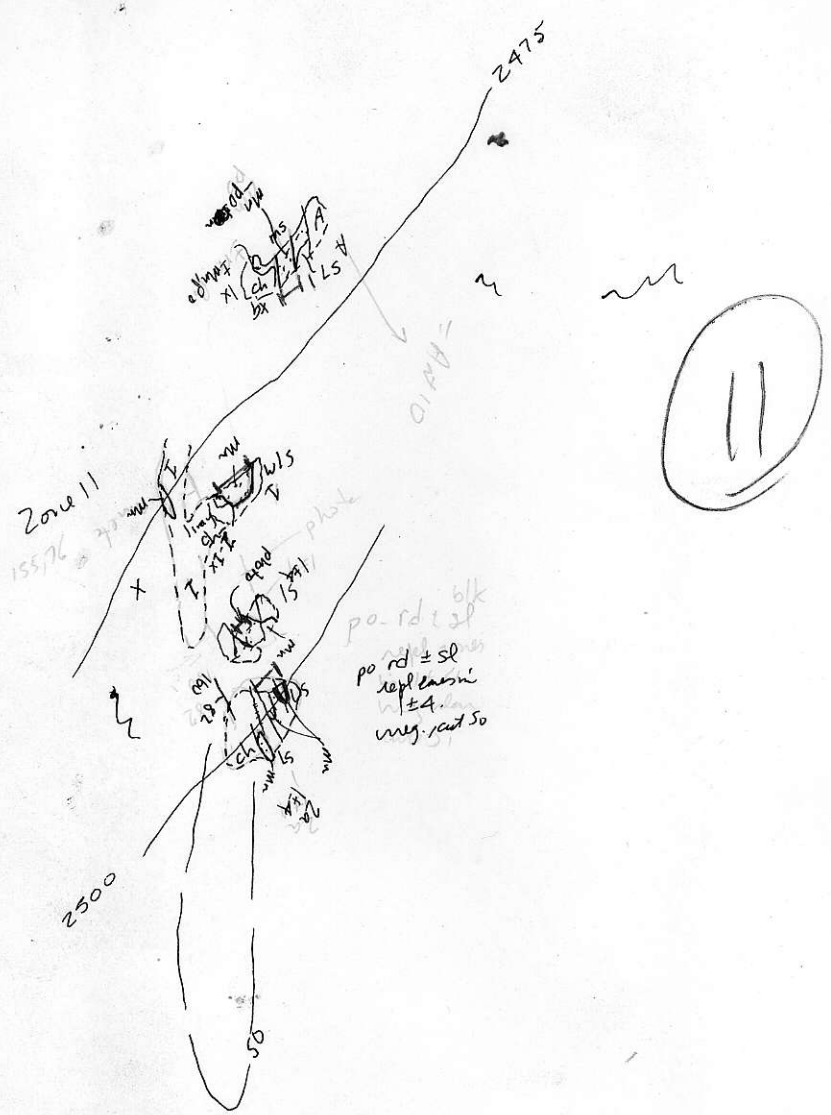
Zone 12

+ 438N
8910E

430 N T
236 E

Zone
10





43N +

~

~

~

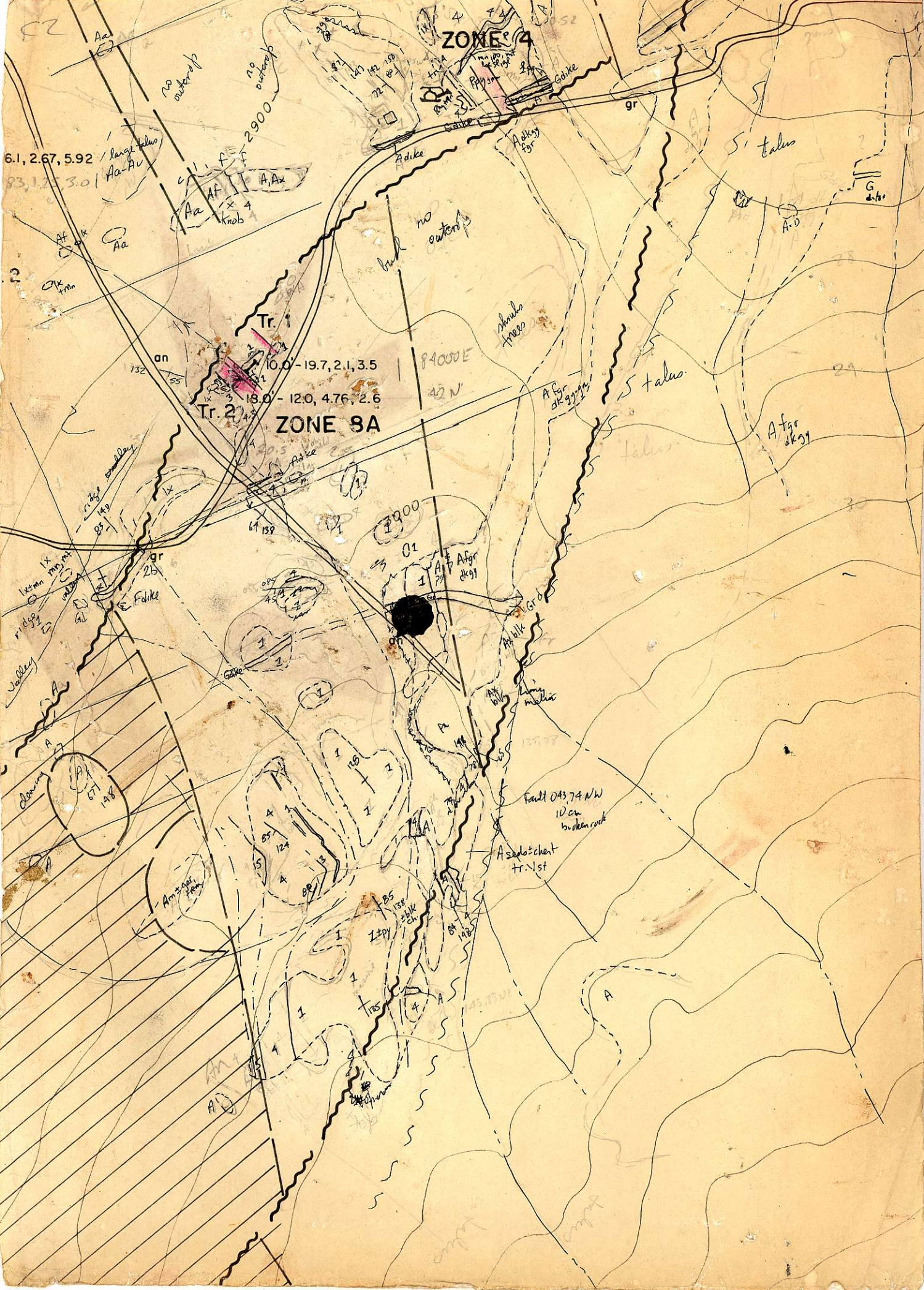


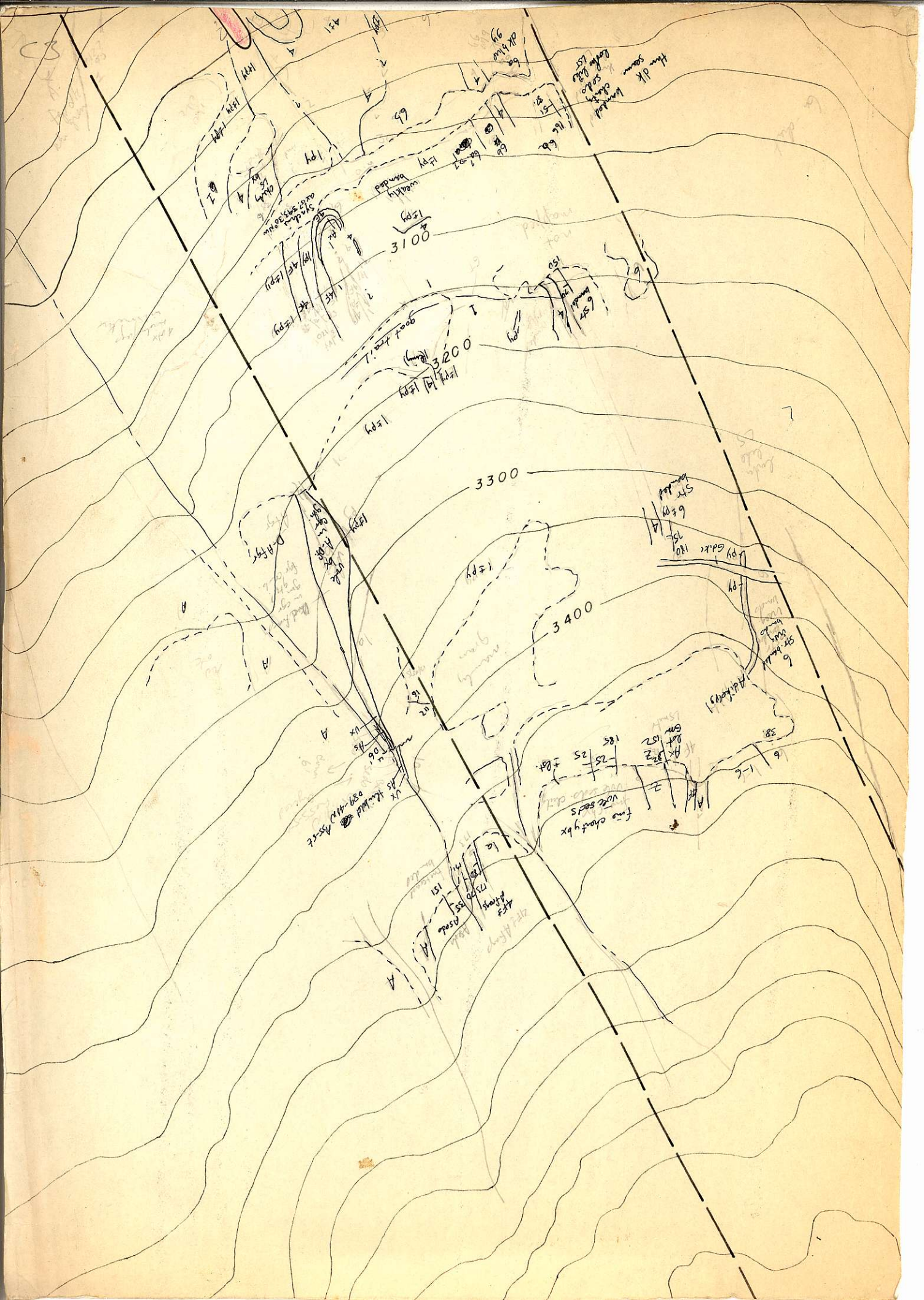
6.1, 2.67, 5.92
83.1, 3.0

ZONE 4

ZONE 8A

Tr. 1
10.0 - 19.7, 2.1, 3.5
Tr. 2
18.0 - 12.0, 4.76, 2.6





E3

17.3 - 3.6, 2.8, 5.7

75°

ZO

77°

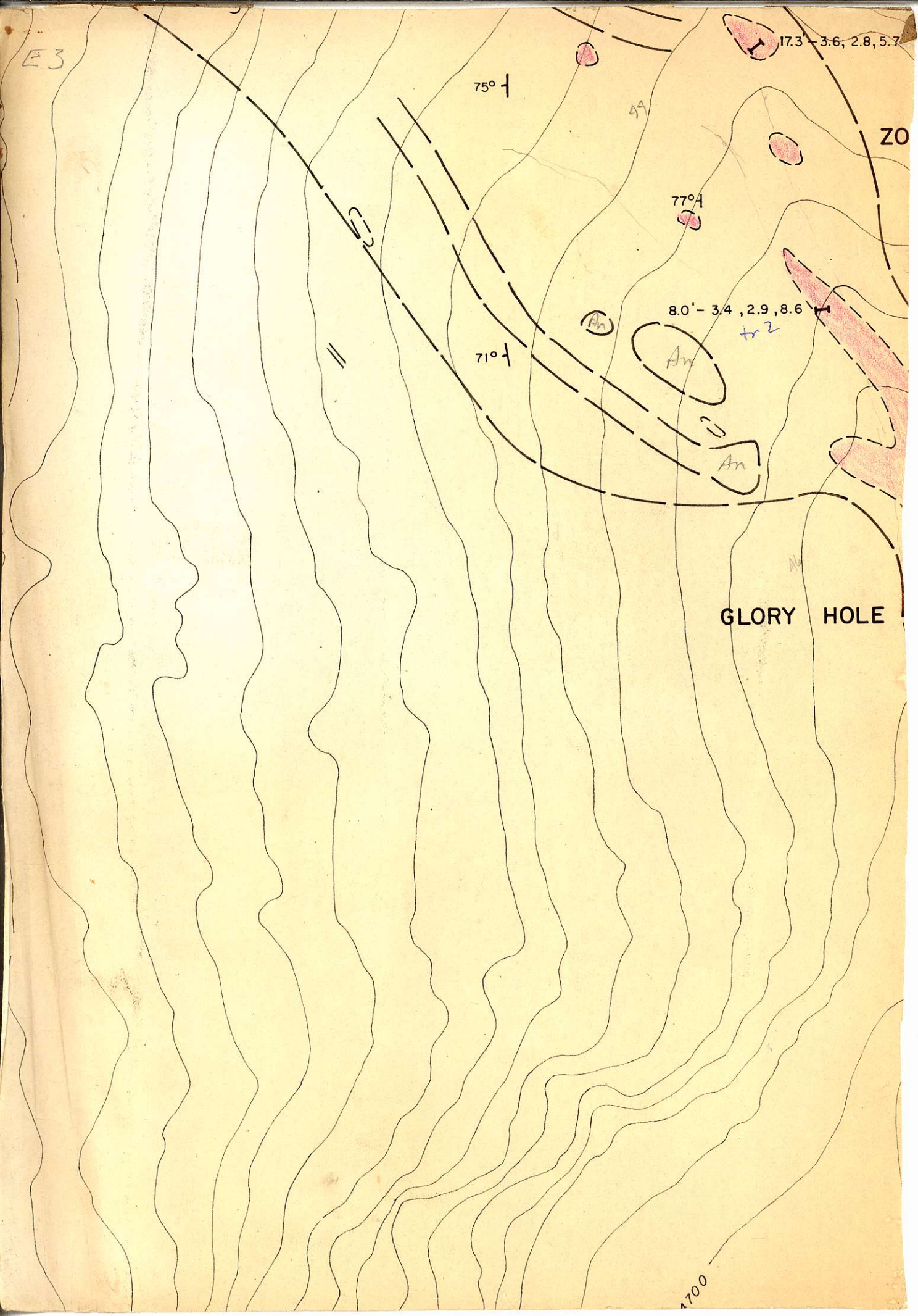
8.0 - 3.4, 2.9, 8.6

71°

tr 2

GLORY HOLE

1700



PI



103

3500

3600

3700

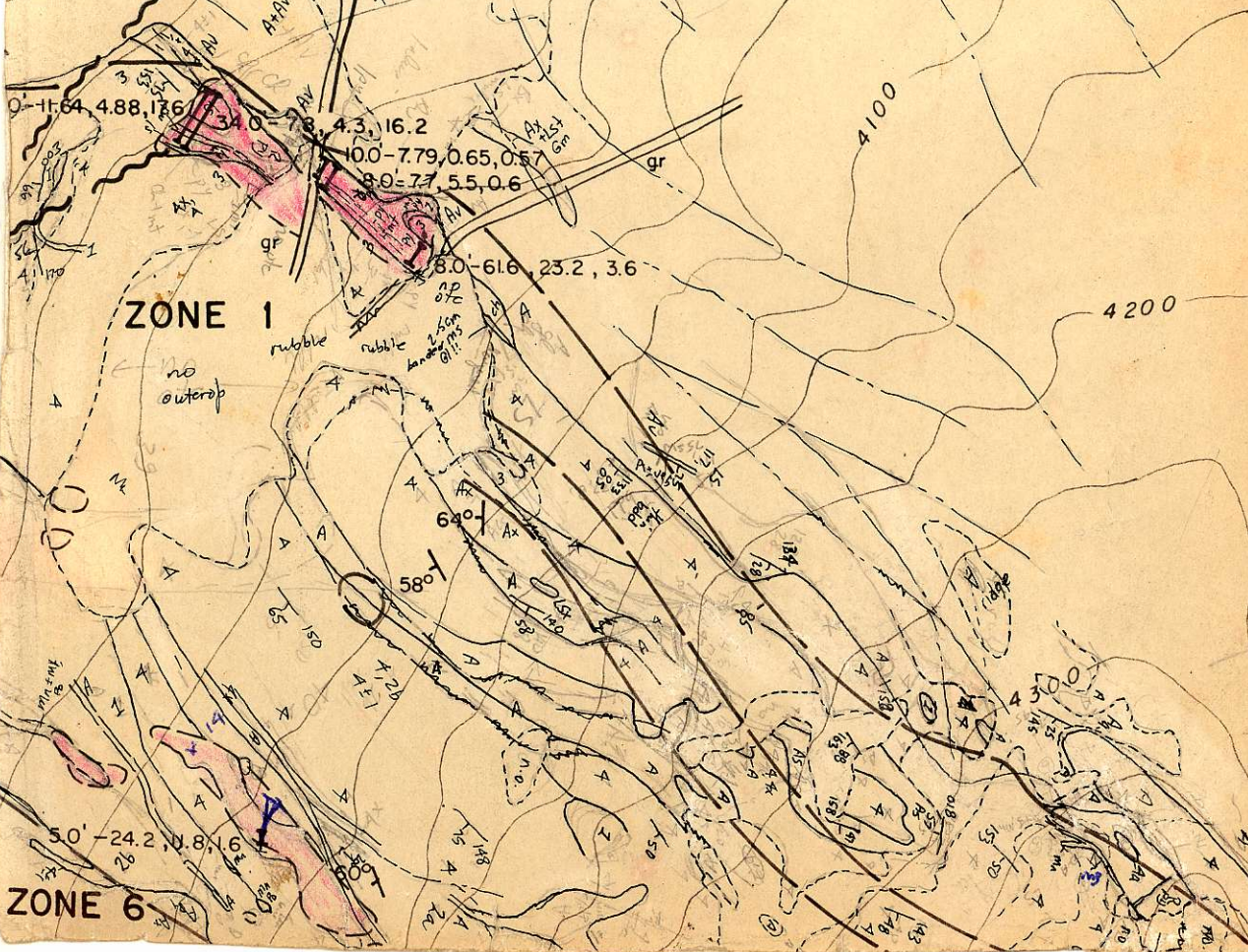
3800

3900

4000

4100

4200



ZONE 1

ZONE 6

0-11.64, 4.88, 17.6

4.3, 16.2

100-7.79, 0.65, 0.57

80-7.7, 5.5, 0.6

50'-61.6, 23.2, 3.6

50'-24.2, 0.8, 1.6

rubble

rubble

no outcrop

58°

64°

150

150

150

150

150

150

150

150

150

150

150

150

150

150

150

150

150

150

150

150

150

150

150

150

150

150

150

150

150

150

150

150

150

150

150

150

150

150

150

150

150

150

150

150

150

150

150

150

150

150

150

150

150

150

150

150

150

150

150

150

150

150

150

150

150

150

150

150

150

150

150

150

150

150

150

150

150

150

150

150

150

150

150

150

150

150

150

150

150

150

150

150

150

150

150

150

150

150

150

150

150

150

150

150

150

150

150

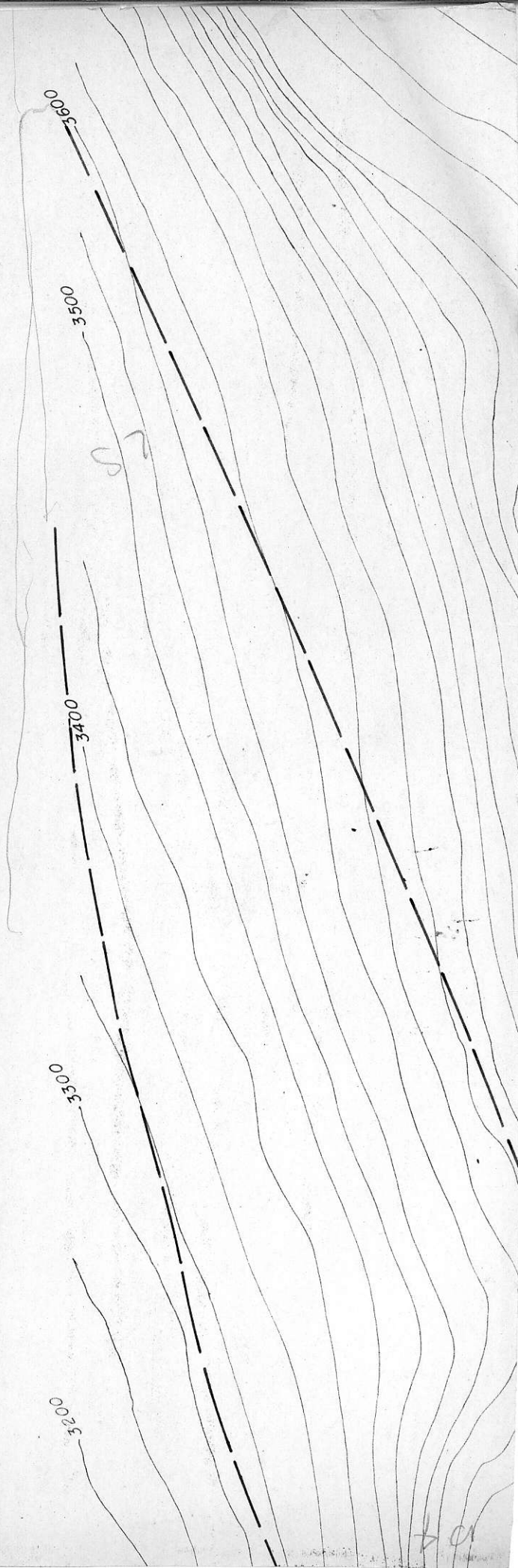
150

150

150

150

150



3600

3500

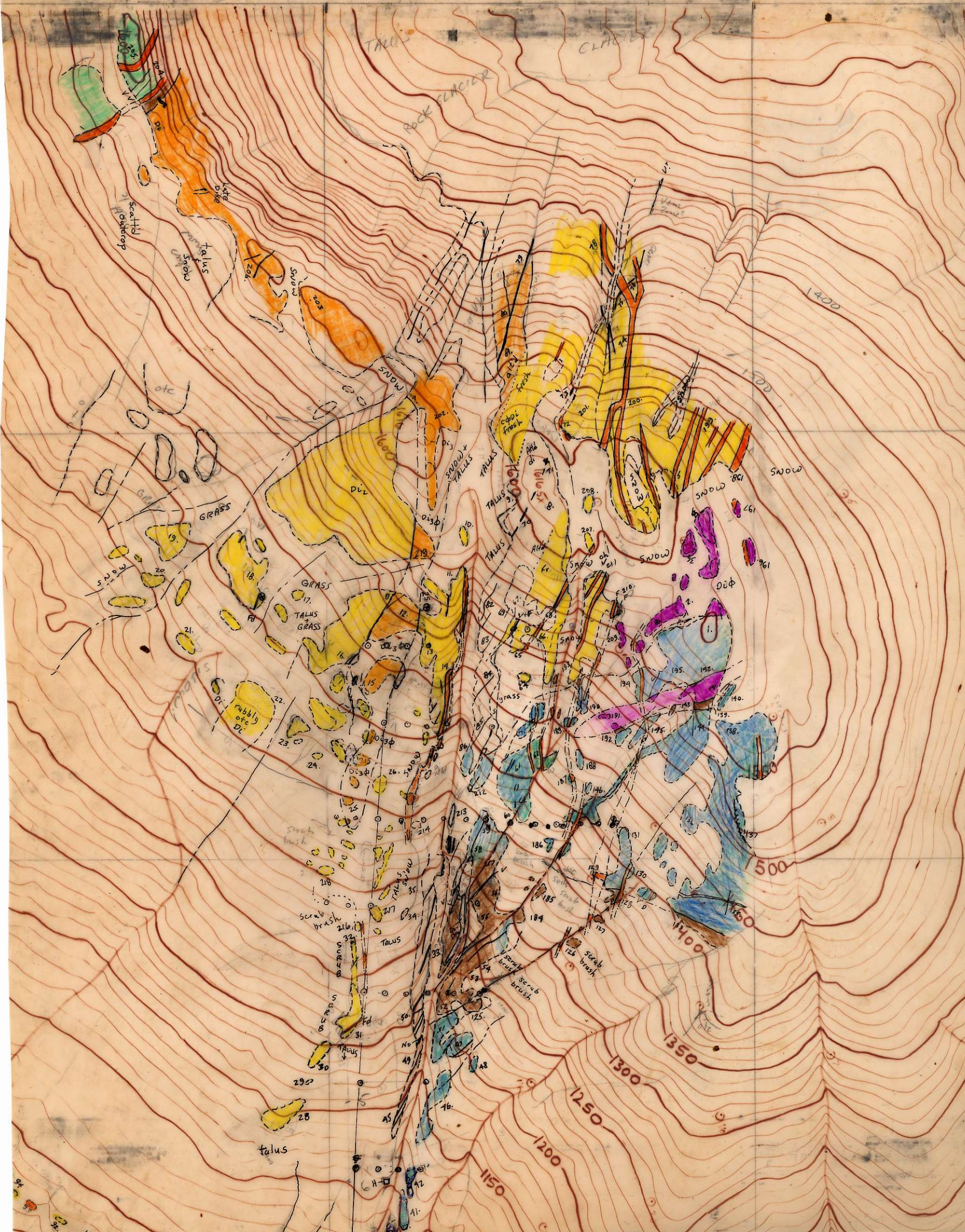
3400

3300

3200

J 2

10



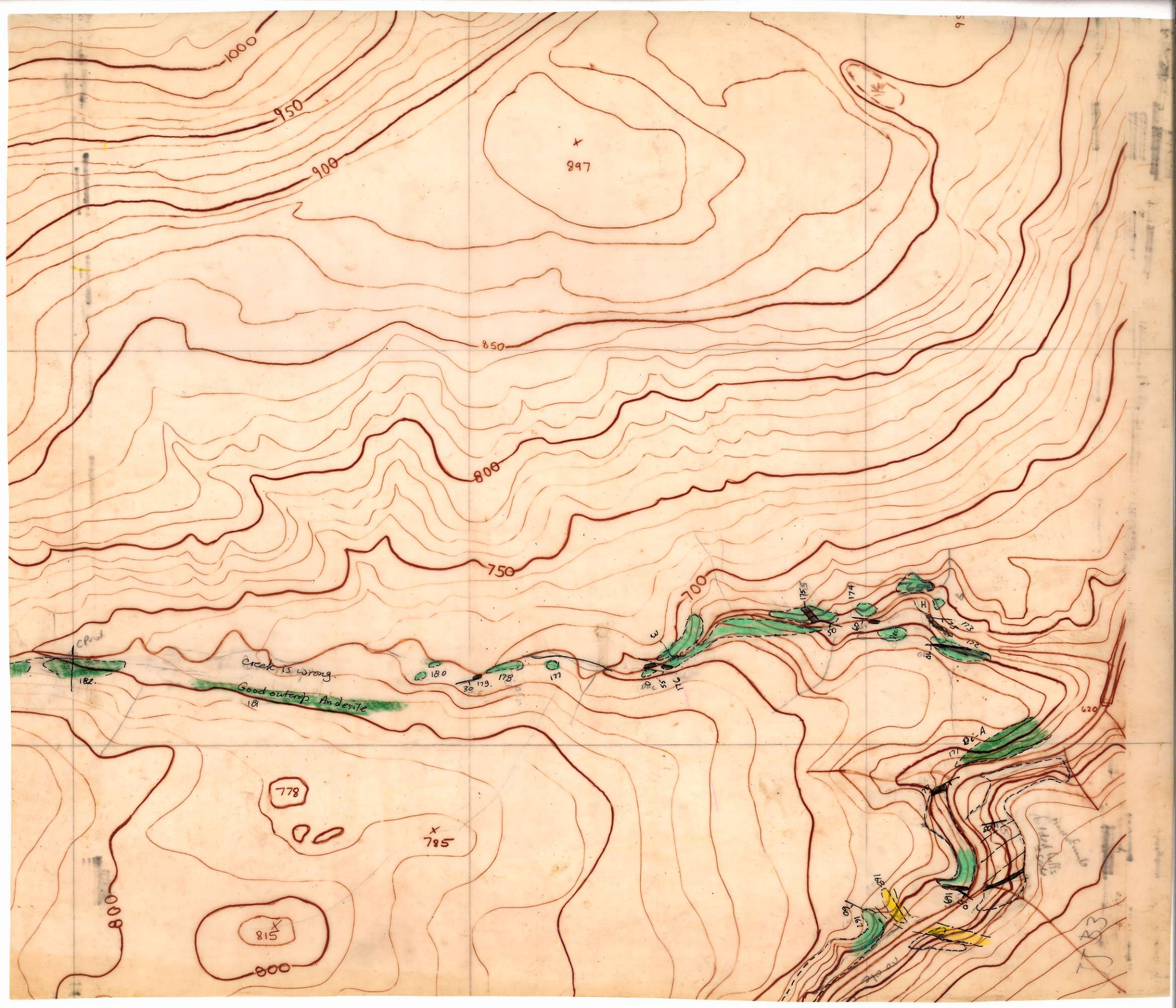
151
98
98











1000

950

900

x
997

850

800

750

700

CPoint

Creek is wrong.
Good outcrop Andesite

180
179
178
177

176
175
174

173
172
171
170
169
168
167
166
165
164
163
162
161
160
159
158
157
156
155
154
153
152
151
150
149
148
147
146
145
144
143
142
141
140
139
138
137
136
135
134
133
132
131
130
129
128
127
126
125
124
123
122
121
120
119
118
117
116
115
114
113
112
111
110
109
108
107
106
105
104
103
102
101
100
99
98
97
96
95
94
93
92
91
90
89
88
87
86
85
84
83
82
81
80
79
78
77
76
75
74
73
72
71
70
69
68
67
66
65
64
63
62
61
60
59
58
57
56
55
54
53
52
51
50
49
48
47
46
45
44
43
42
41
40
39
38
37
36
35
34
33
32
31
30
29
28
27
26
25
24
23
22
21
20
19
18
17
16
15
14
13
12
11
10
9
8
7
6
5
4
3
2
1
0

778

x
785

x
815

800

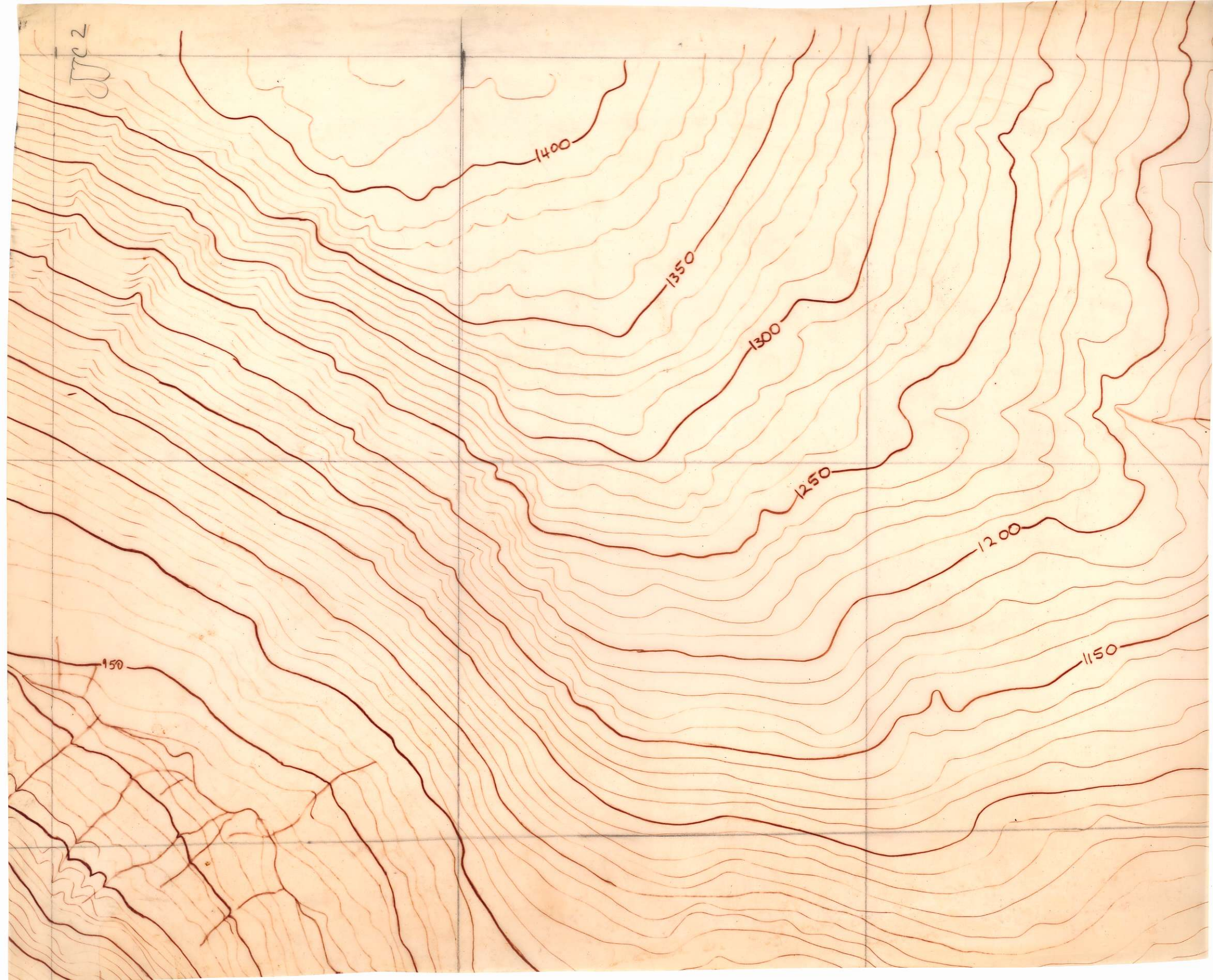
800

JTB3

JW JB

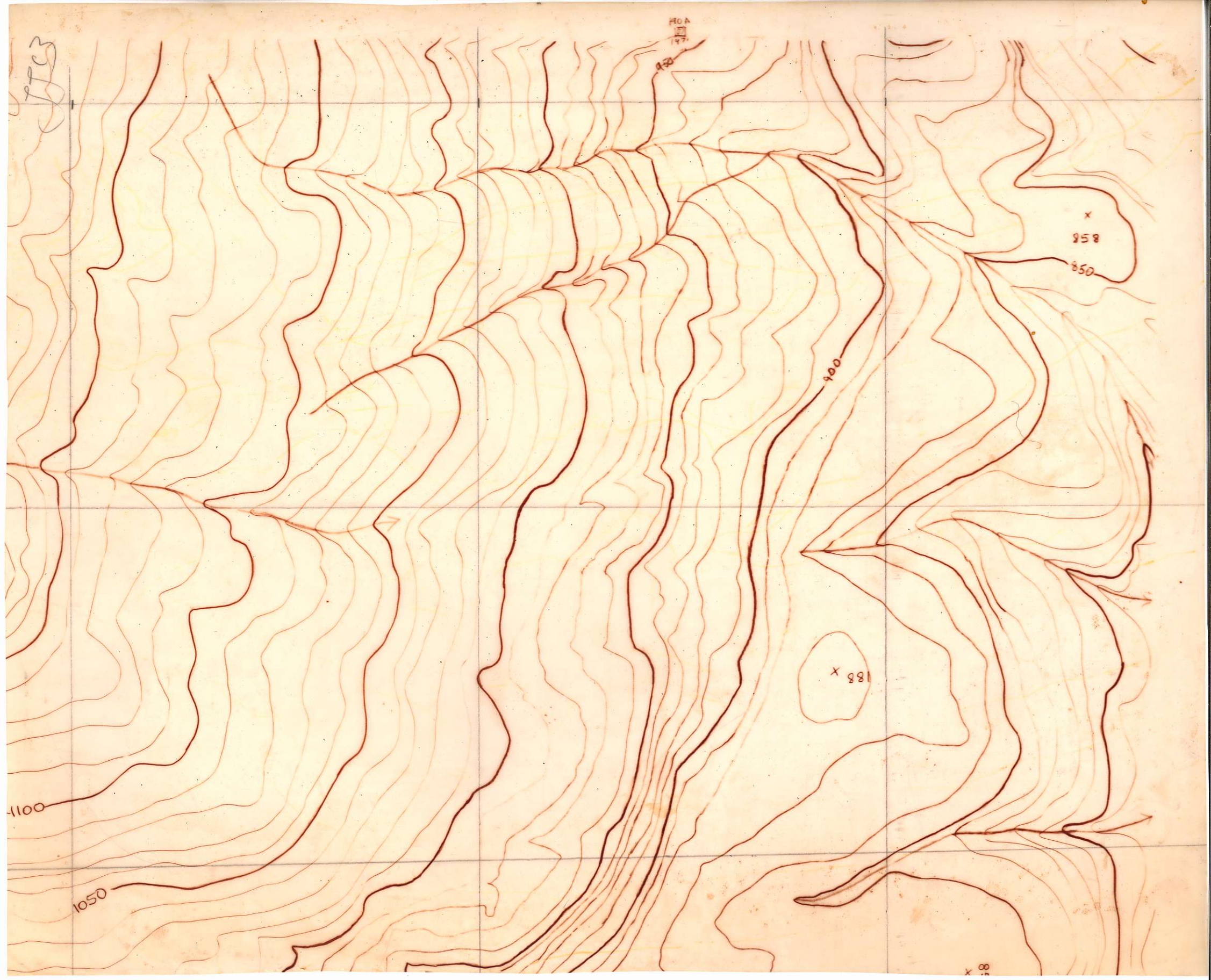


7702



7703

FOA
1977
1-20



JNJJ03
No stereo

1041.5



107

1036

26 @ 70
103
104
105
106
107
108
109
110
111
112
113
114
115
116
117
118
119
120
121
122
123
124
125
126
127
128
129
130
131
132
133
134
135
136
137
138
139
140
141
142
143
144
145
146
147
148
149
150
151
152
153
154
155
156
157
158
159
160
161
162
163
164
165
166
167
168
169
170
171
172
173
174
175
176
177
178
179
180
181
182
183
184
185
186
187
188
189
190
191
192
193
194
195
196
197
198
199
200

Gr) P

83.6

A1

B1

ZONE 5

64.0' - 0.38, 0.2
39.7'

740'

1700

1800

2000

2300

2500

ZONE 11

Tr. 4

6.5' 0.73 0.42 0

Tr. 3

8' 2.4, 10, 43.2N

Tr. 2

1' 5.98, 0.4, 1.2

Tr. 1

8.0' - 2.62, 1.49, 1.6
4.9' 2.6 1.25 1.6

heavy alders etc
A
C
dent

ZONE 10

Tr. 3

Tr. 2

22.0' - 1.5
33.7'

17.5' - 4.5 (3 sections)
165
180
185
190
195
200
205
210
215
220
225
230
235
240
245
250
255
260
265
270
275
280
285
290
295
300
305
310
315
320
325
330
335
340
345
350
355
360
365
370
375
380
385
390
395
400
405
410
415
420
425
430
435
440
445
450
455
460
465
470
475
480
485
490
495
500
505
510
515
520
525
530
535
540
545
550
555
560
565
570
575
580
585
590
595
600
605
610
615
620
625
630
635
640
645
650
655
660
665
670
675
680
685
690
695
700
705
710
715
720
725
730
735
740
745
750
755
760
765
770
775
780
785
790
795
800
805
810
815
820
825
830
835
840
845
850
855
860
865
870
875
880
885
890
895
900
905
910
915
920
925
930
935
940
945
950
955
960
965
970
975
980
985
990
995
1000

ZONE 5

Tr. 1

5.0' - 4.18, 1.01, 1.42

S-1

4.2' - 1.77, 4.6, 2.0

S-2

9.0' - 3.7, 1.9, 1.6

Tr. 3

11.5' - 3.2, 1.0, 2.3

Tr. 4

20.0' - 2.74, 2.8

Tr. 2

Tr. 5

13.1' - 4.5, 1.7, 3.6

S-5

12.0' - 8.4, 3.5, 5

S-4

7.0' - 10.2, 2.27,

22.5' - 1.7, 0.57, 1.5

an

70'

5.7

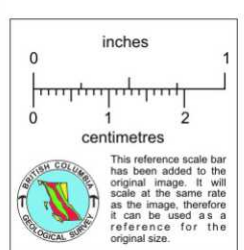
5-7

13.5' - 1.2, 0.1, 0.5

an

5.7

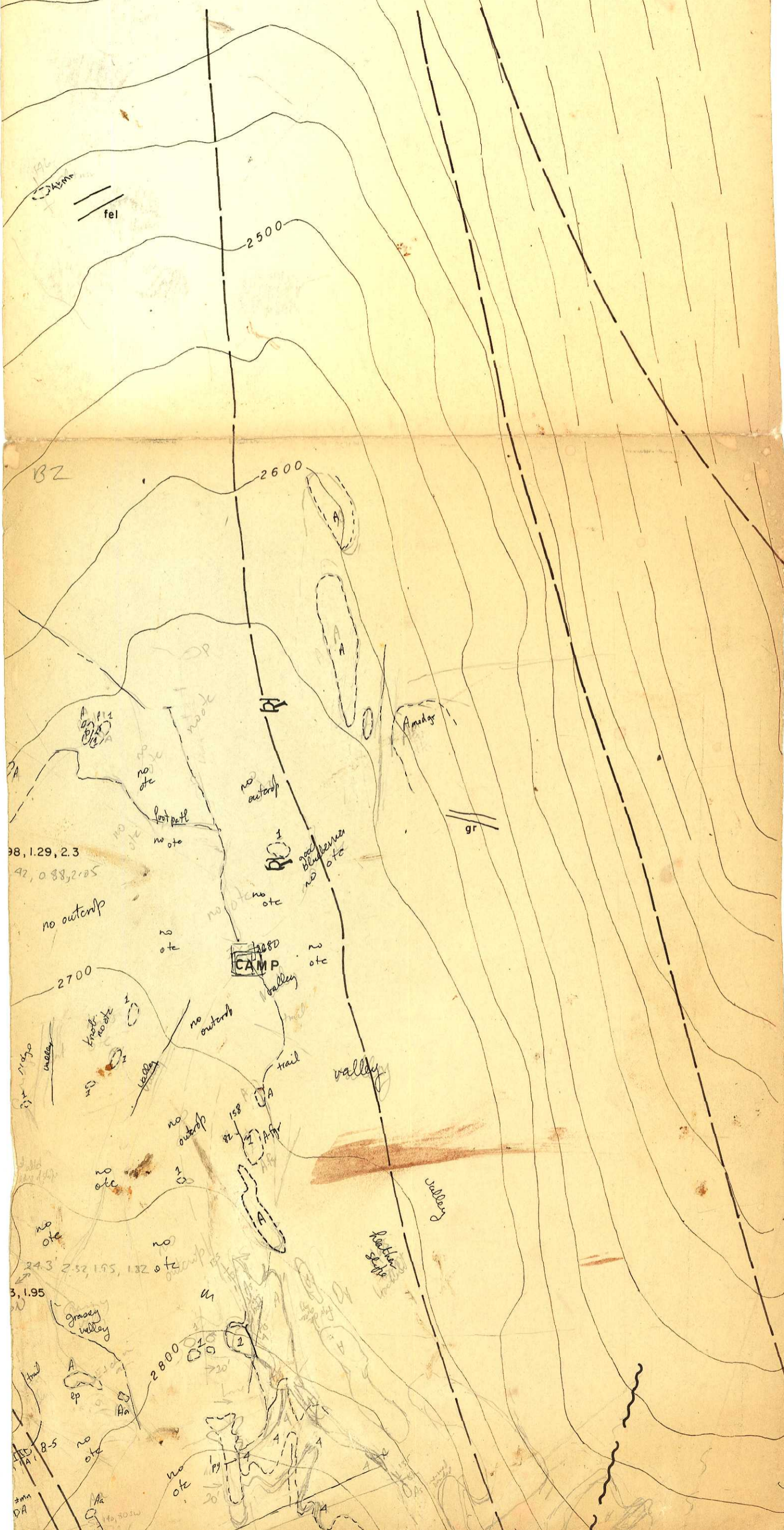
5-7



AZ

E 12

4,0.87



98, 1.29, 2.3

42, 0.88, 2.25

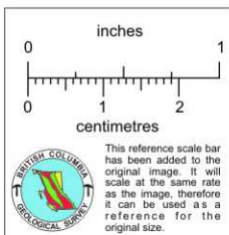
24.3, 2.32, 1.95, 1.82

3, 1.95

8.5

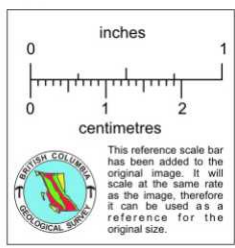
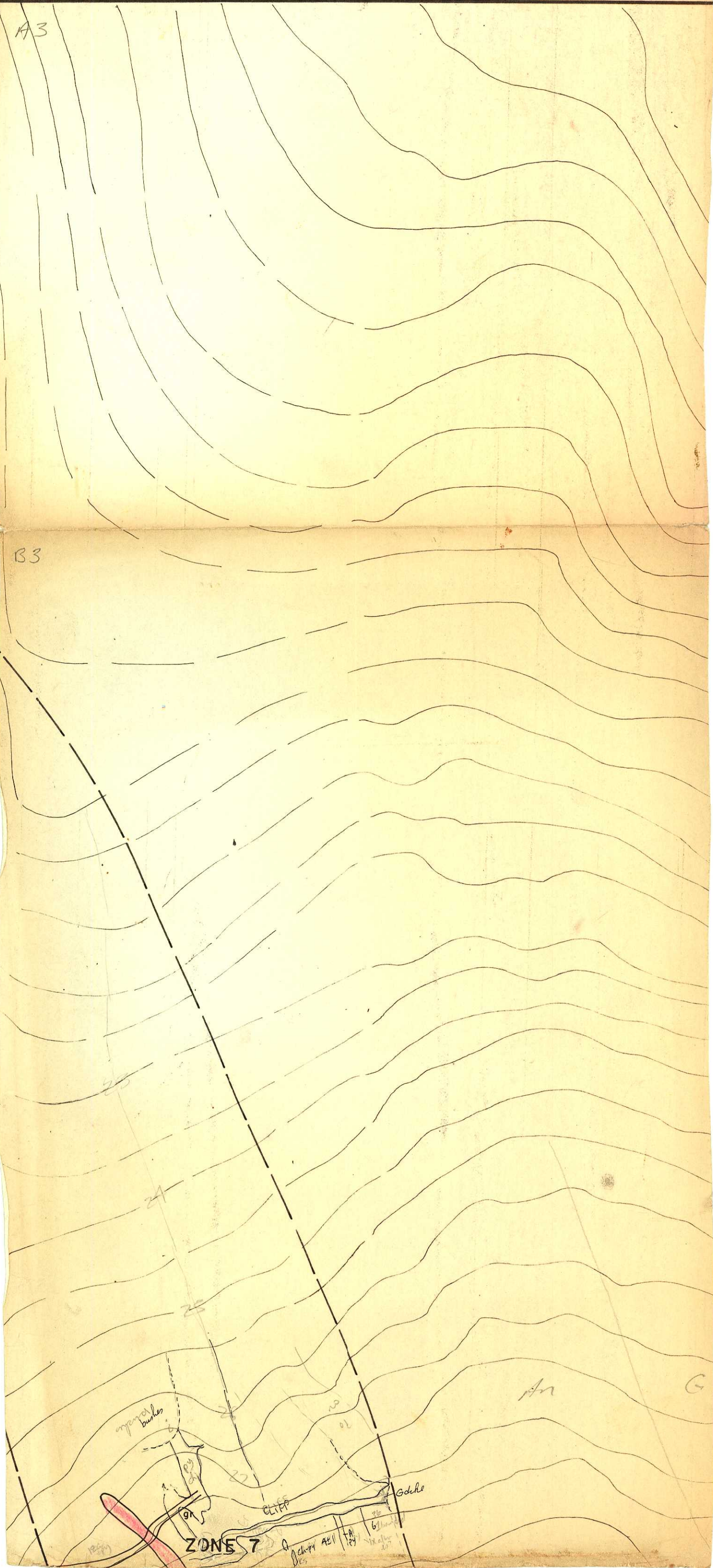
140, 30.5

80, 140



A3

B3



A4

1400

B4

1600

1800

2000

2300

2500

2600

