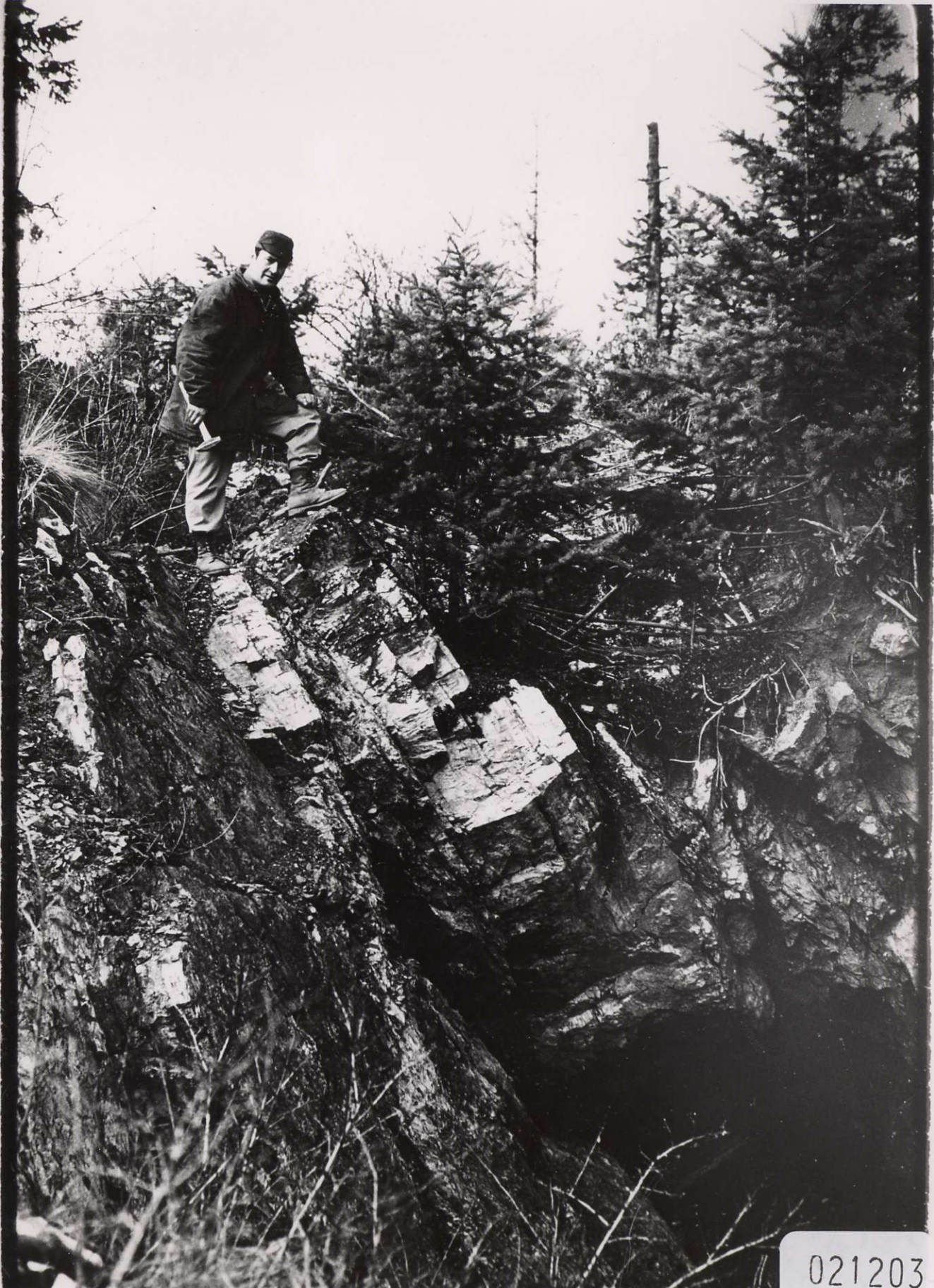


557.

Plate # Lincoln Vein, City of Paris Area

Reduce
50%



021203

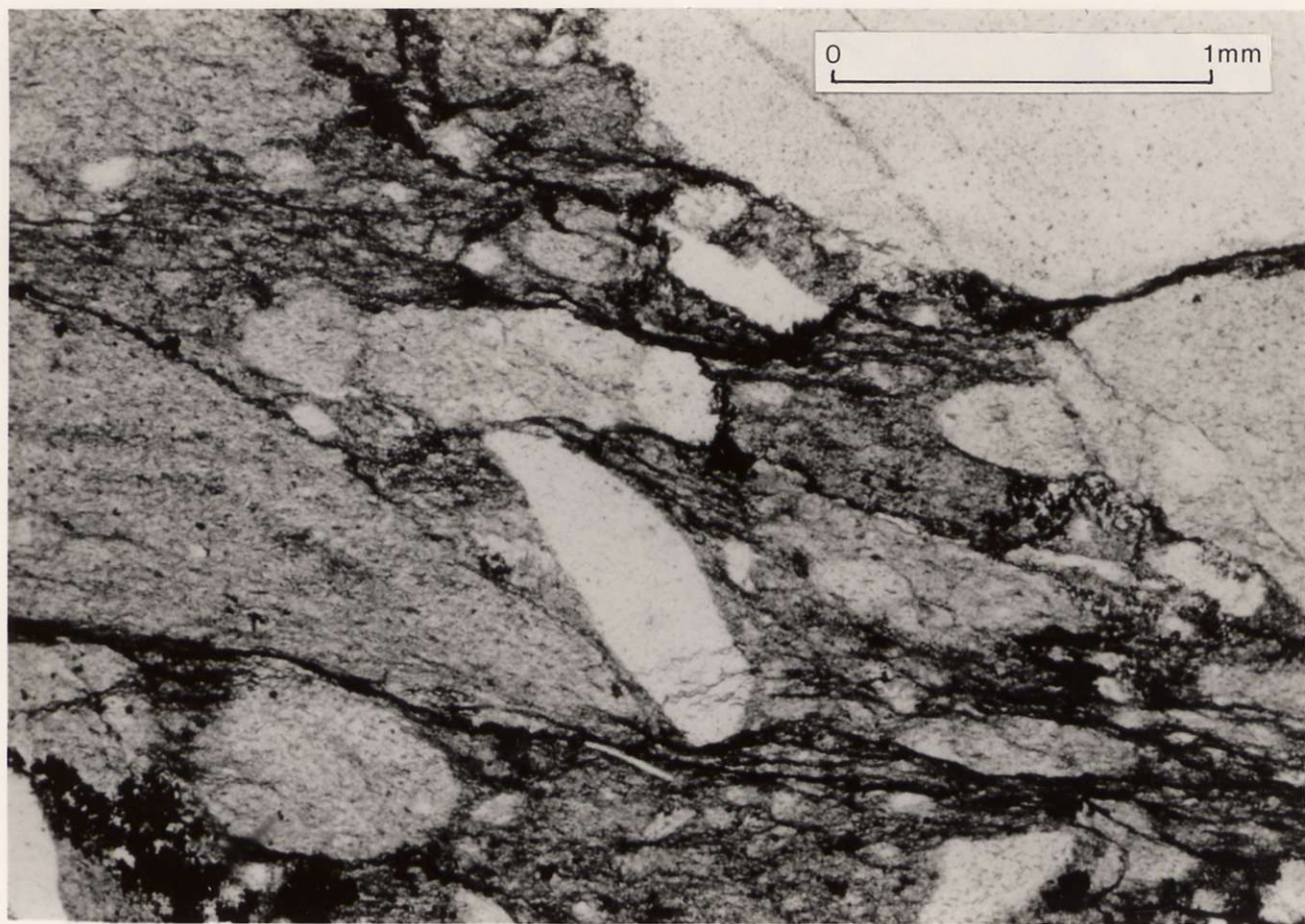


PLATE V IMMATURE CHERT PEBBLE CONGLOMERATE,
ATTWOOD GROUP

June Size

103%

Plate

10

TP

~~TP~~
outcrop of
Denver
Granite
Shaft
(1973)



W. H. Smith



PLATE IV EN ECHELON MARBLE LENSES IN
KNOB HILL SCHIST

Same Size

105°



PLATE VI SMALL CHEVRON FOLDS IN BLACK
ARGILLITE OF THE ATTWOOD GROUP,
SKOMAC MINE AREA

Same Size

Paper 1986-2

1056

80%



PLATE XX PANORAMA OF THE SKOMAC MINE SITE,
 LOOKING NORTHERLY AT THE MAIN PORTALS
 (Reduce to ~~60~~ 70%)

place length
 across page



PLATE XIV VIEW OF ORA DENORO OPEN PIT,
LOOKING SOUTH

*Plate XIV
Same Day*

120%

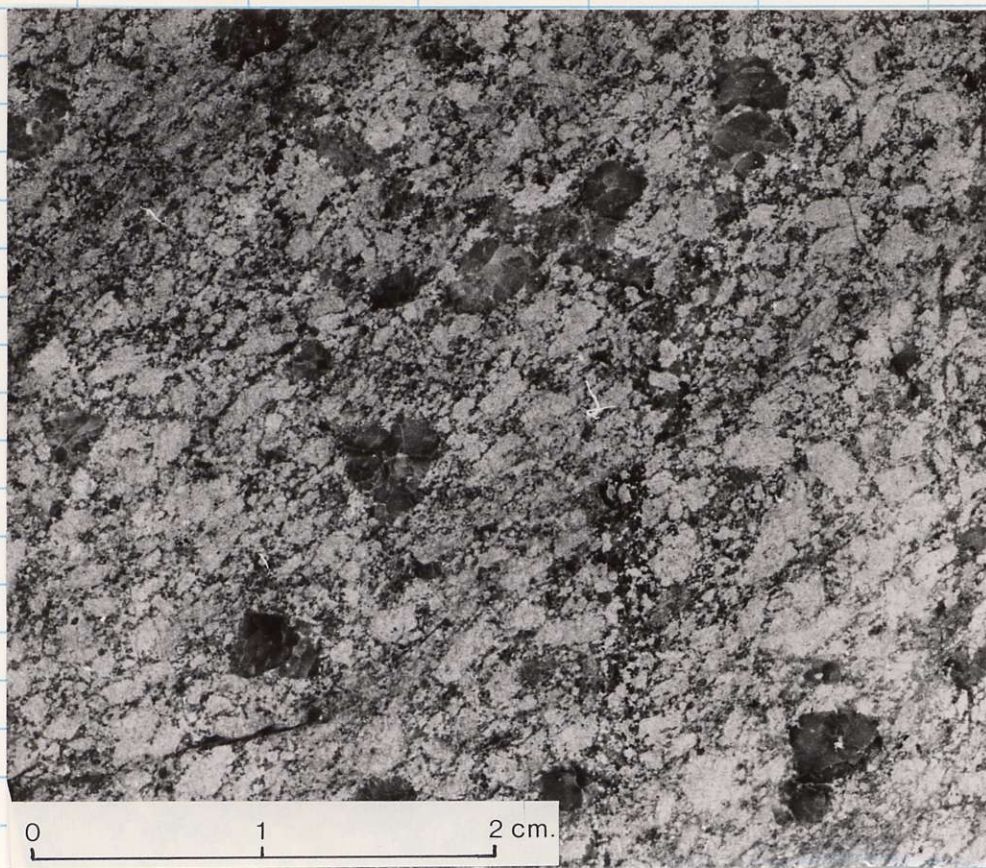


PLATE VI POLISHED SECTION OF LEXINGTON
QUARTZ PORPHYRY

(Same Size)

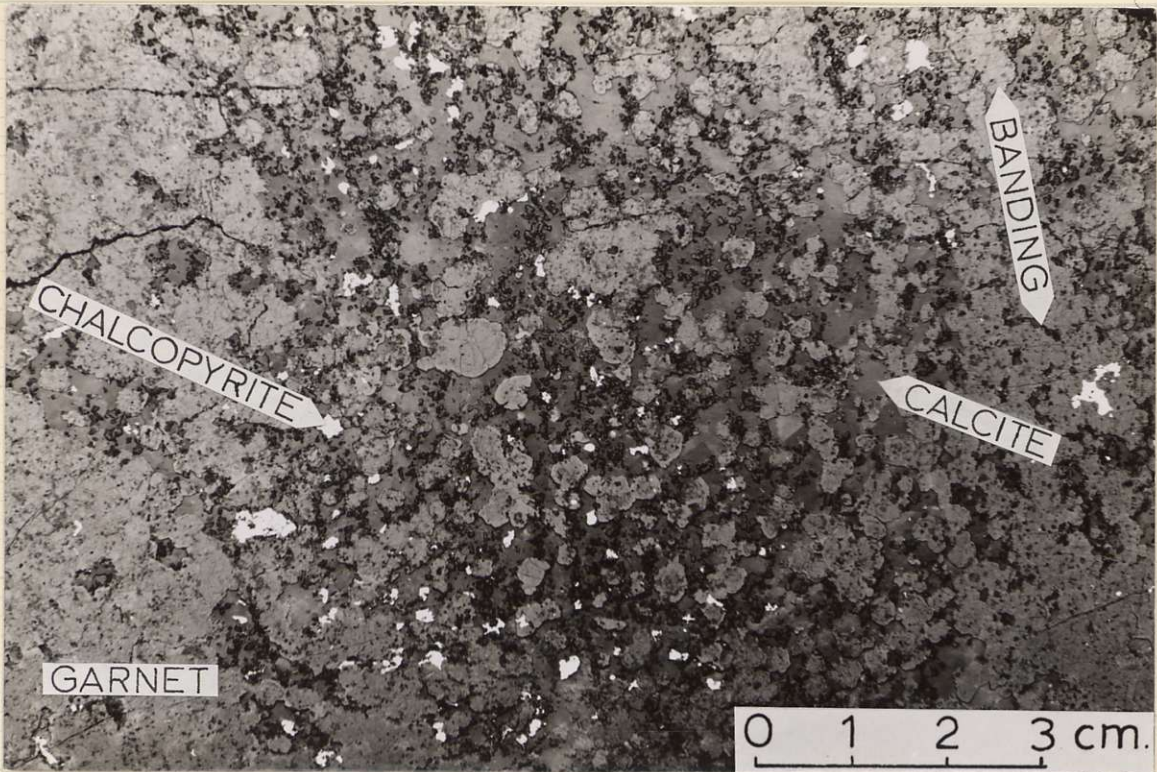
105%
OK.



PLATE VII FOLIATED CLAST OF KNOB HILL
SCHIST IN BROOKLYN CONGLOMERATE

Enlarge $\times 1\frac{1}{2}$

137%

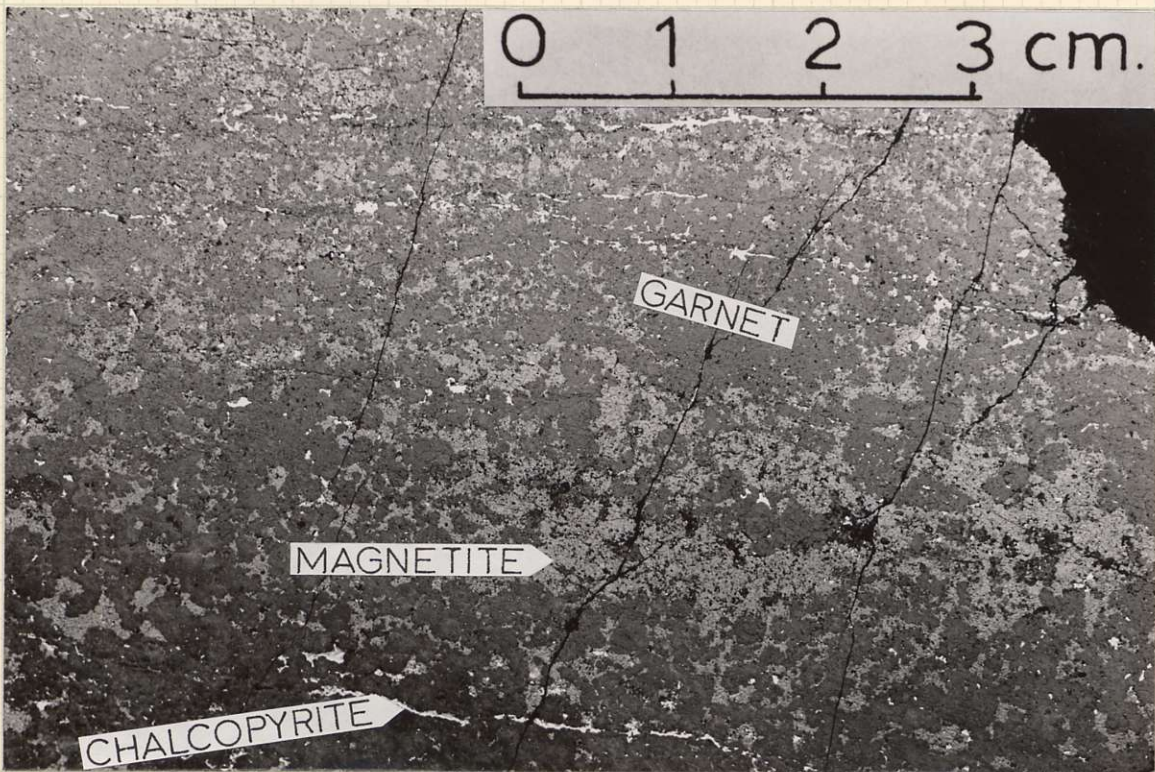


102
XVII

PLATE XVII

Oro Denoro - garnetite with relic carbonate - rich bands and disseminated pyrite and chalcopyrite

102
102%
102



102
XVIII

PLATE XVIII

Oro Denoro - magnetite-rich garnetite with pyrite and chalcopyrite on cracks

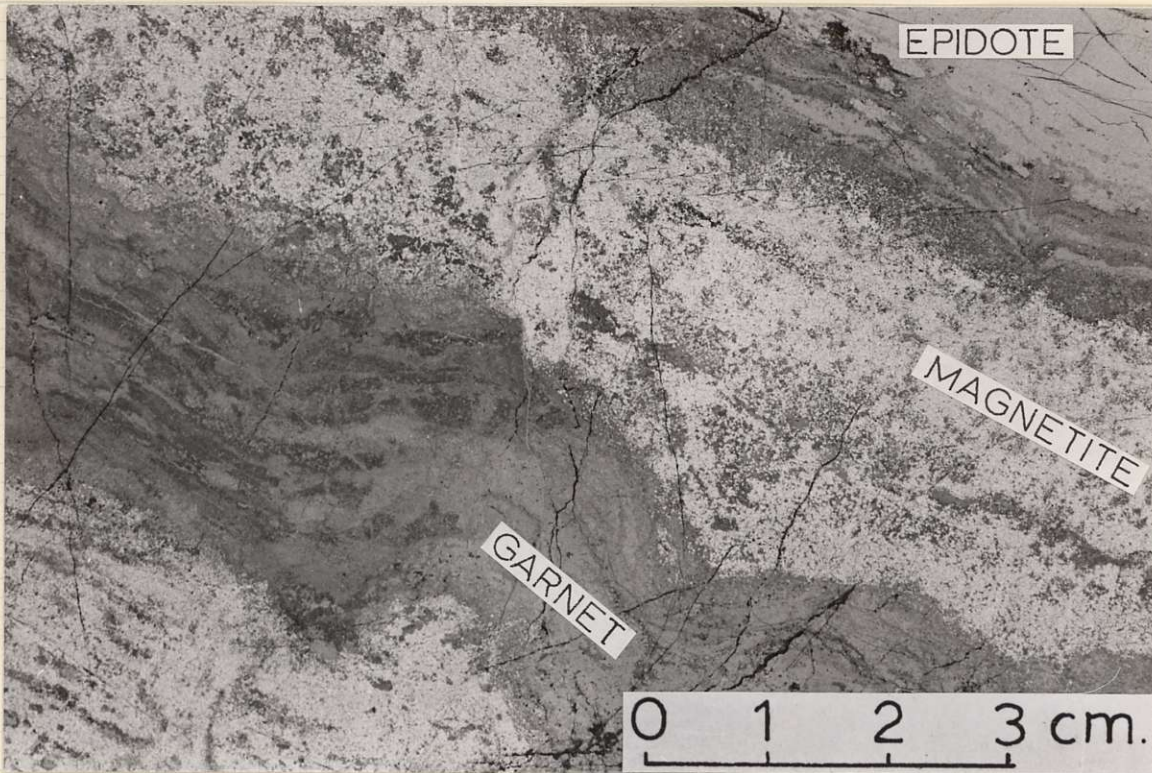


PLATE XV Oro Denoro - banded garnet magnetite, epidote skarn

102%

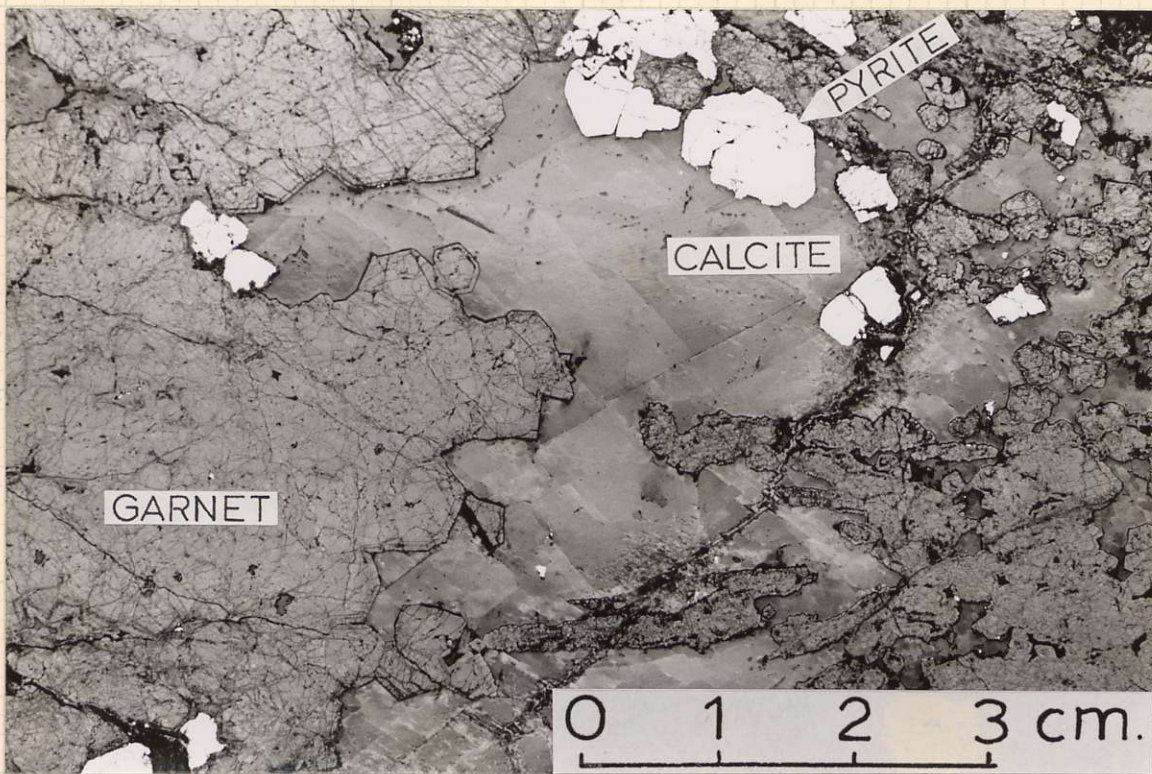


PLATE XVI Oro Denoro - garnetite with calcite and pyrite fillings



FRONTISPIECE

THE PHOENIX MINE AT CLOSE OF OPERATIONS, OCTOBER 1976

Bleed off page

250%

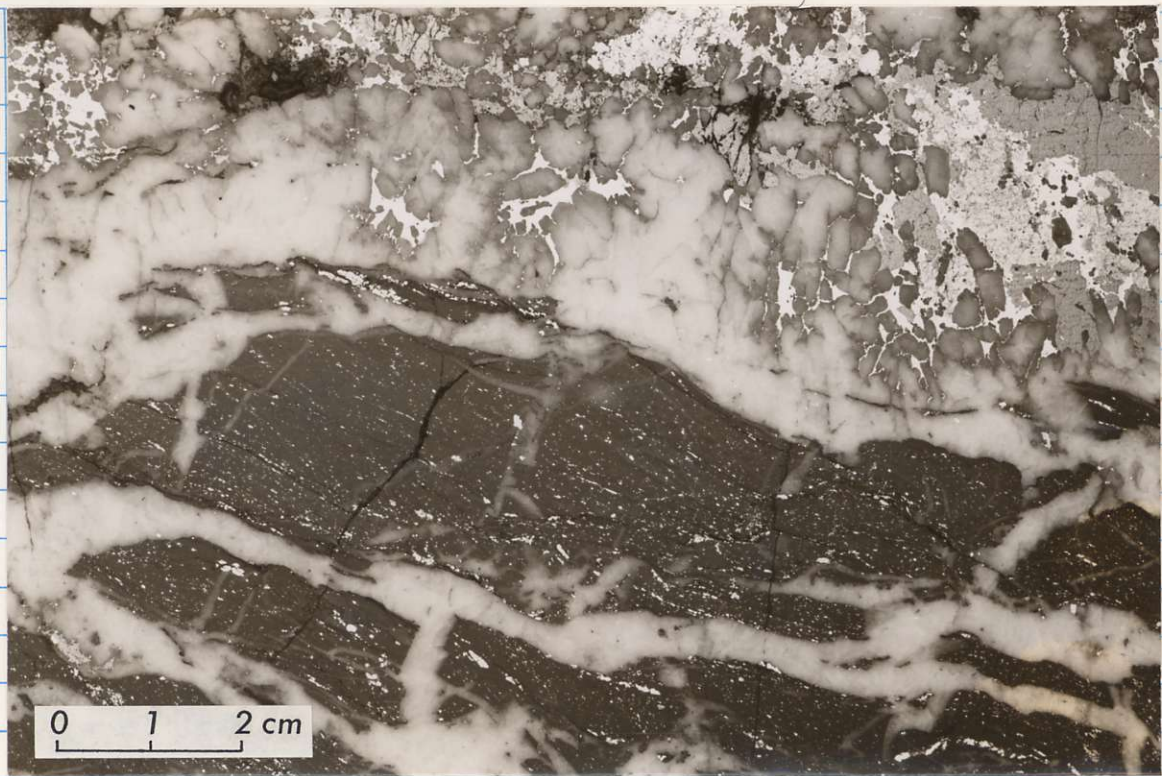


PLATE XXI POLISHED SECTION OF SKOMAC
QUARTZ VEIN, SHOWING PYRITE
AND GALENA (BRIGHT), TETRAHEDRITE
(MEDIUM GREY), AND SPHALERITE
(DARK GREY)

Some size

OK 5/10

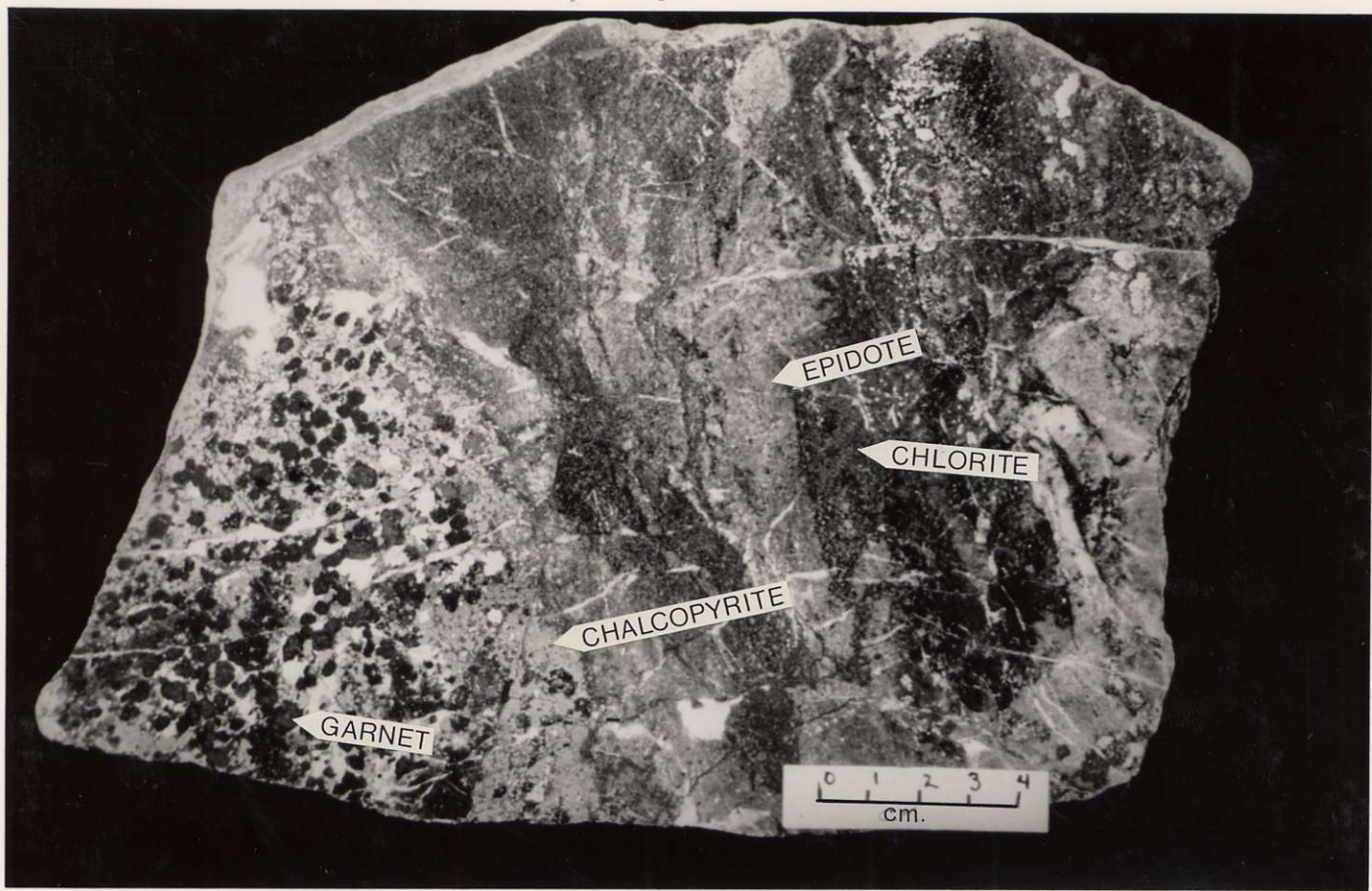


PLATE XIX PHOENIX, GARNET-EPIDOTE SKARN
HOSTING PYRITE-CHALCOPYRITE MINERALIZATION

103%



PLATE XII PORTRAYAL OF DENORO GRANDE
HEADFRAME (1973)

(Same Size)

105%
OK.

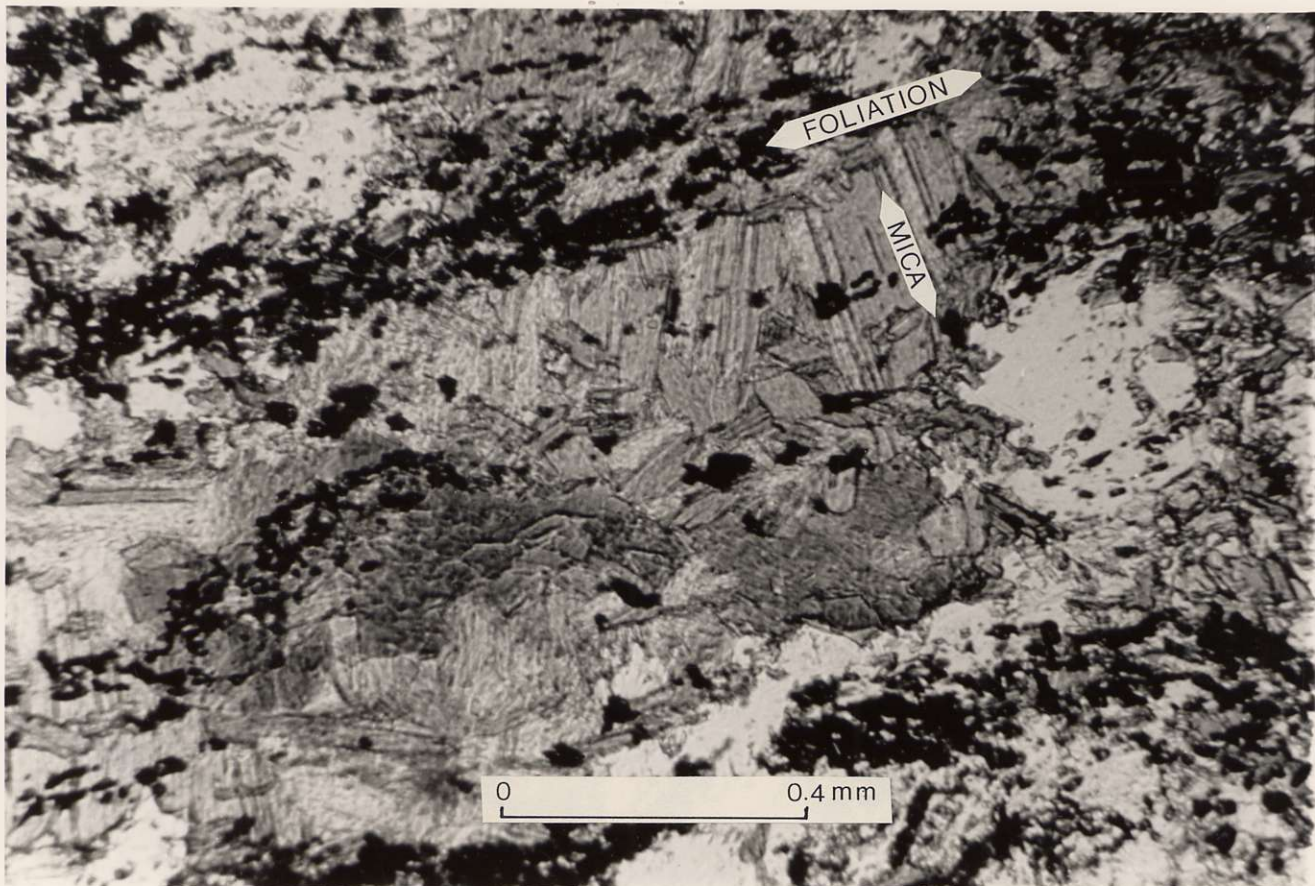


PLATE III LATE GROWTH OF BIOTITE AND MUSCOVITE
ACROSS EARLY PENETRATIVE FABRIC (INDICATED BY
STREAKS OF OPAQUE ORE GRANULES.

Jane Sjo

103/10

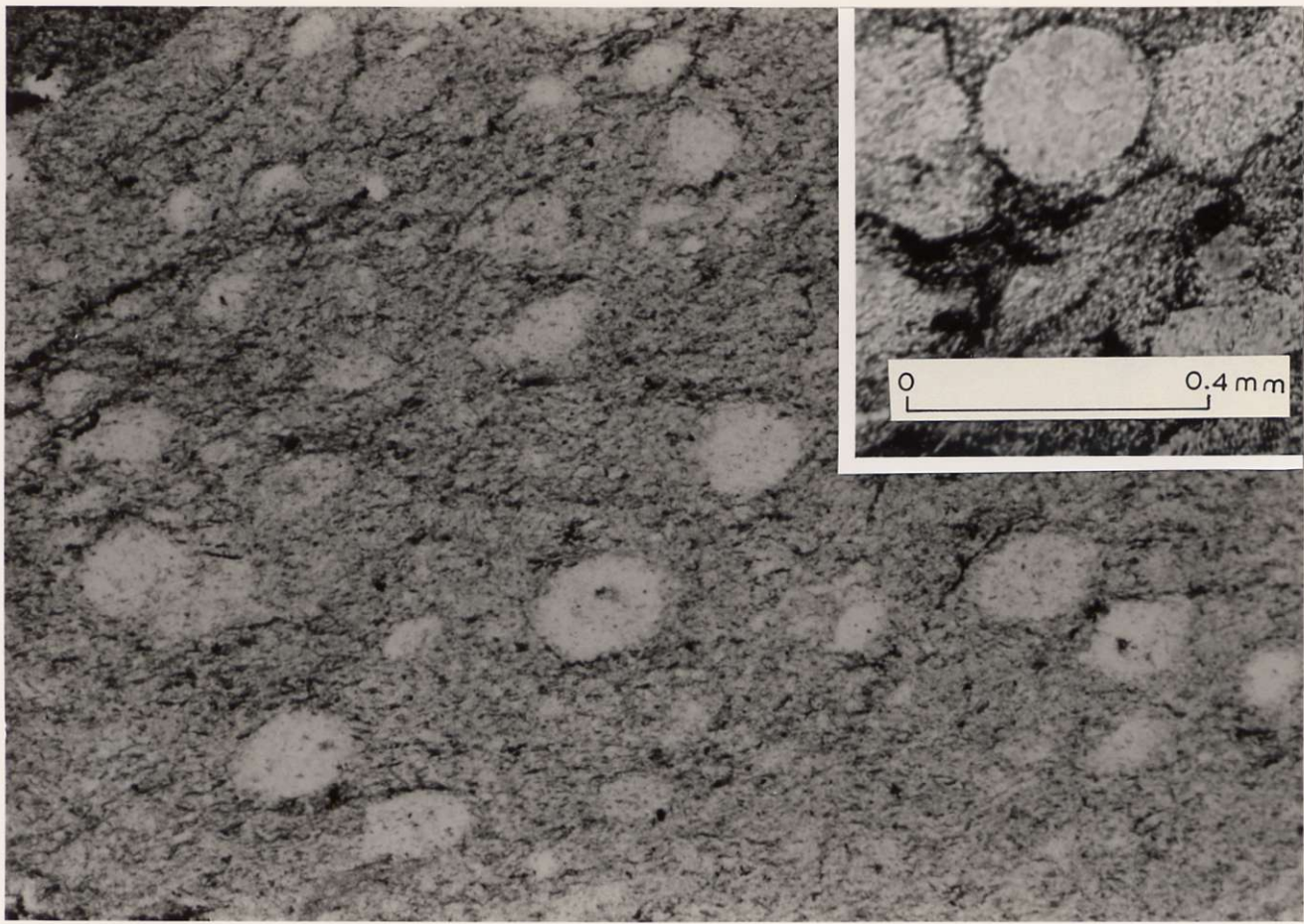


PLATE I RADIOLARIAN CHERT, KNOB HILL GROUP

same size

103/0

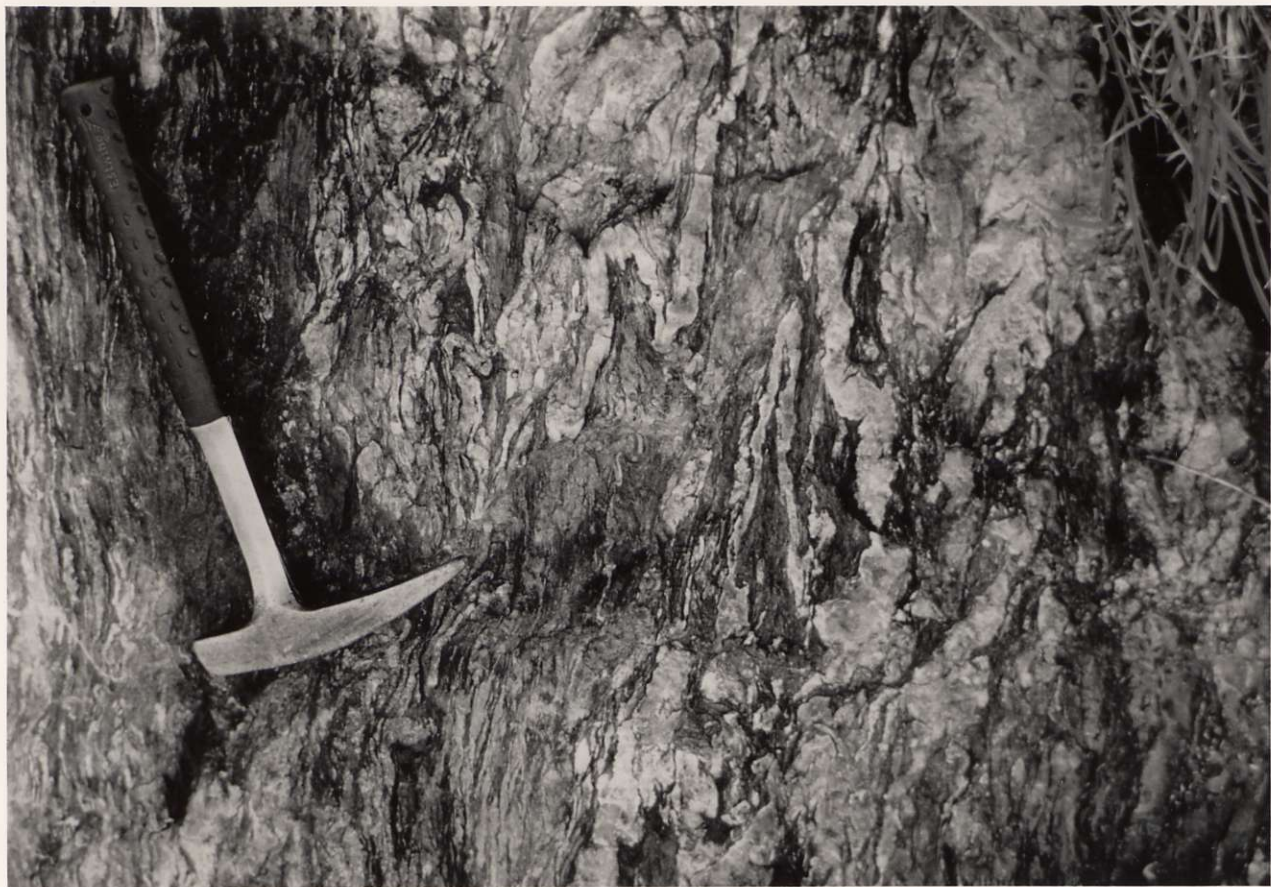


PLATE II HIGHLY DEFORMED SCHISTOSE ROCKS,
KNOB HILL GROUP ON MOUNT ATTWOOD

Same Size

105/.



MASSIVE SULPHIDES

PLATE XIII DISCOVERY TRENCH ON
SYLVESTER K MASSIVE
SULPHIDE ZONE

(Same Size)

105%



PLATE IX SERPENTINE KERNELS IN SHEARED
ULTRAMAFIC ROCKS

Same Size

105%

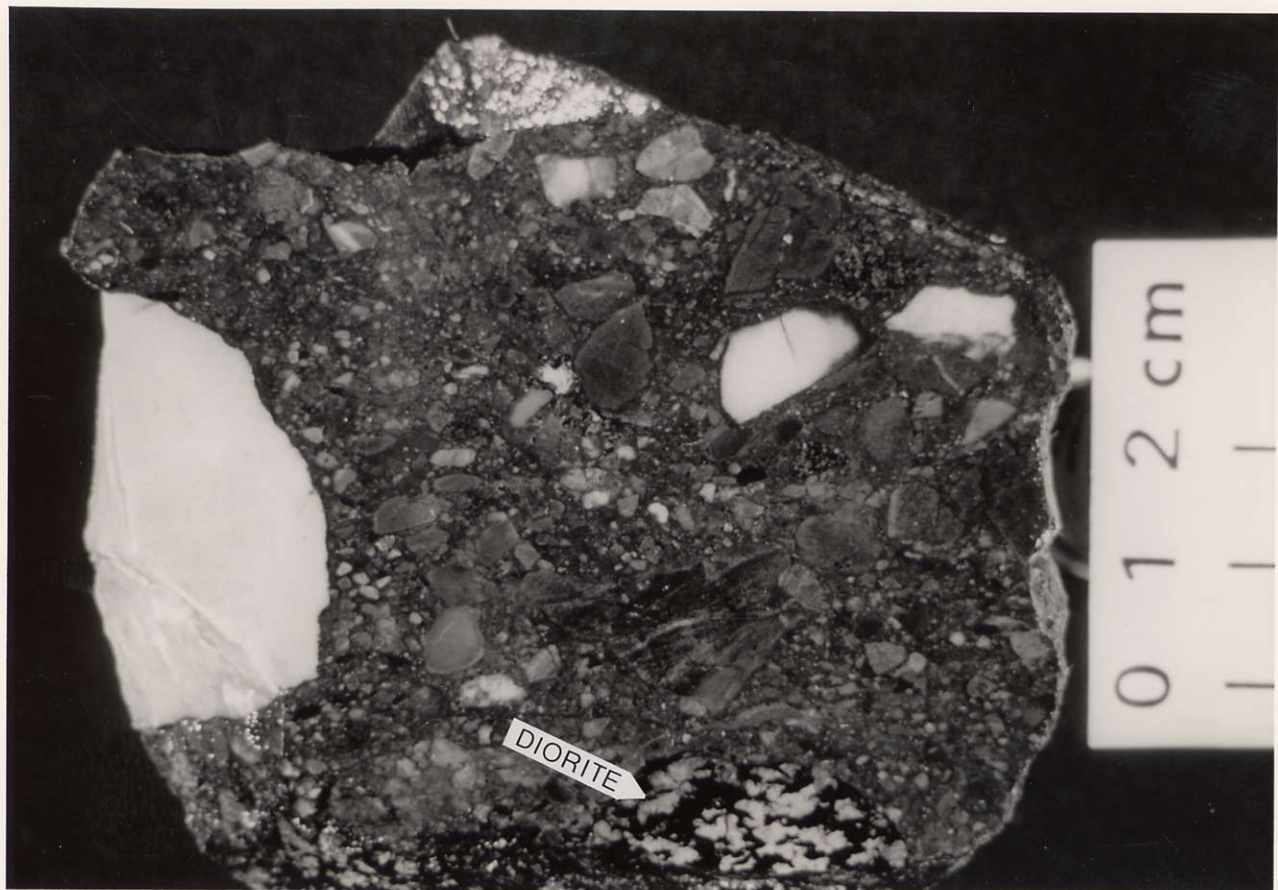


PLATE VIII 'PUDDING-STONE' FACIES OF EHOLT
FORMATION WITH LIMESTONE, CHERT, OLD DIORITE,
AND VOLCANIC CLASTS.

Same Size

105%

Paper 1986-2



split and adjust
for spine