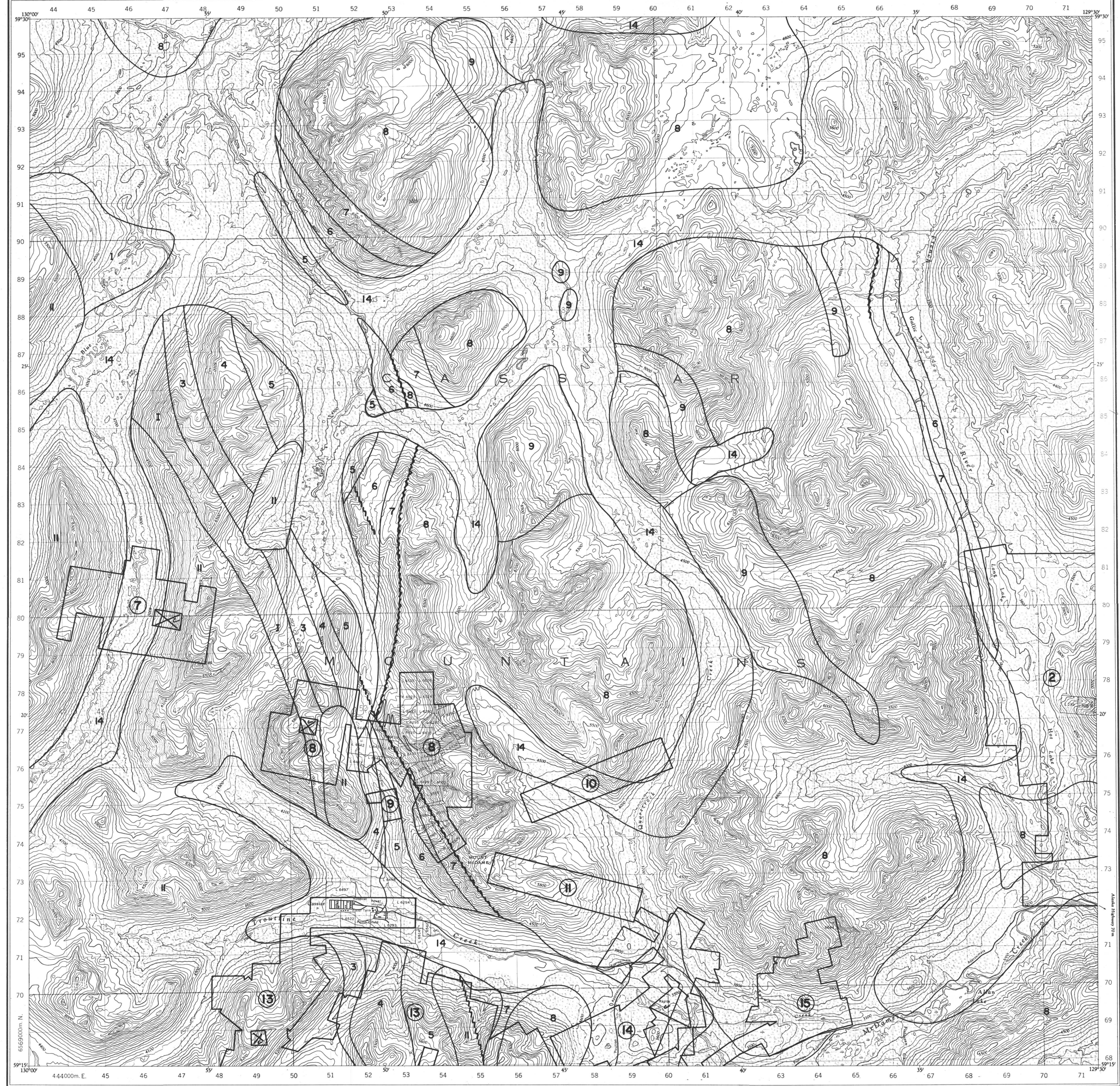
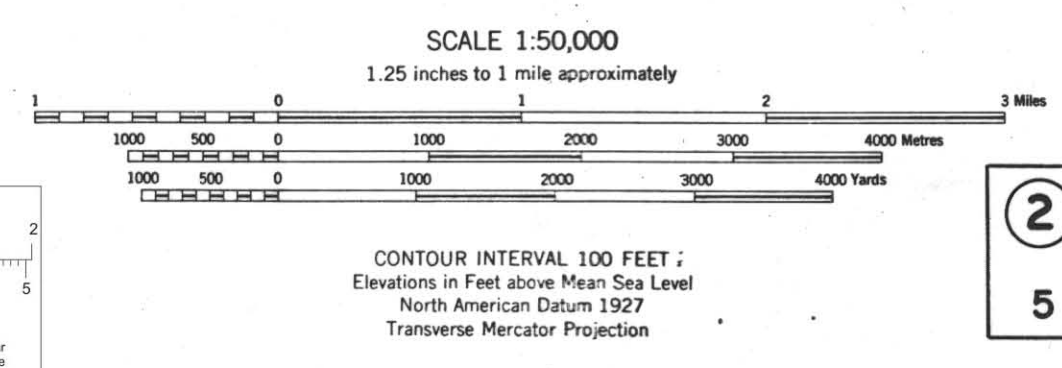


CASSIAR
TOPOGRAPHIC
CLAIMS & GEOLOGY
PROVISIONAL
MAP
SH 104 P/5



Information and names in the REVERSE AND MARGINS BRANCH, DEPARTMENT OF MINES AND TECHNICAL SURVEYS, 1955, from a photogrammetric base of 1949 and 1948. The information on this map has not been submitted to the Canadian Board on Geographical Names and may be subject to revision. MAGNETIC DECLINATION 81°37' EAST AT CENTRE OF MAP 1959 Annual magnetic change 2.30" westerly

CASSIAR
BRITISH COLUMBIA



ONE THOUSAND METRE
UNIVERSAL TRANSVERSE MERCATOR GRID
ZONE 9

GRID ZONE IDENTIFICATION	100,000 M. SQUARE IDENTIFICATION
9V	VR

TO ONE A REFERENCE TO HUNDRED METRES

EXAMPLE	MEANS
53	5300 METRES
537	5370 METRES
5374	5374 METRES
53742	5374.2 METRES
537421	5374.21 METRES

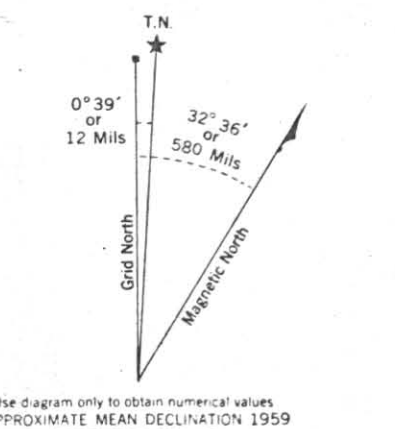
REFERENCE

all weather	—
dry weather	—
winter, cart track	—
trail, cut line or portage	—
Railways:	
normal gauge, multiple track	—
normal gauge, single track	—
abandoned or under construction	—
Bridges: road, railway	—
Culvert, Encumbrance	—
Boundaries:	
international, with monument	—
county or district	—
provincial	—
section line, with number	—
park, reserve, etc.	—
Mine or Open pit	—
Building, Barn	—
School, Post Office	—
Church	—
Lighthouse	—
Cemetery	—

REFERENCE

Power transmission line	—
Telephone line	—
Horizontal control point, with elevation	—
Bench mark, with elevation	—
Streams:	
intermittent or dry	—
indefinite	—
Lake intermittent, indefinite	—
flooded land, seasonal	—
Marsh or Swamp	—
Glacier or Snowfield	—
Foreshore flats	—
Wharf or Pier, Breakwater	—
Rocky reef	—
Small island, rock bare or beach	—
Contours:	
elevation	—
depression	—
approximate	—
Chert	—
Esker	—
Forest	—

2 - CLAIMS KEY
5 - G.S. UNIT NO's



020674 104 P/5 EDITION 1