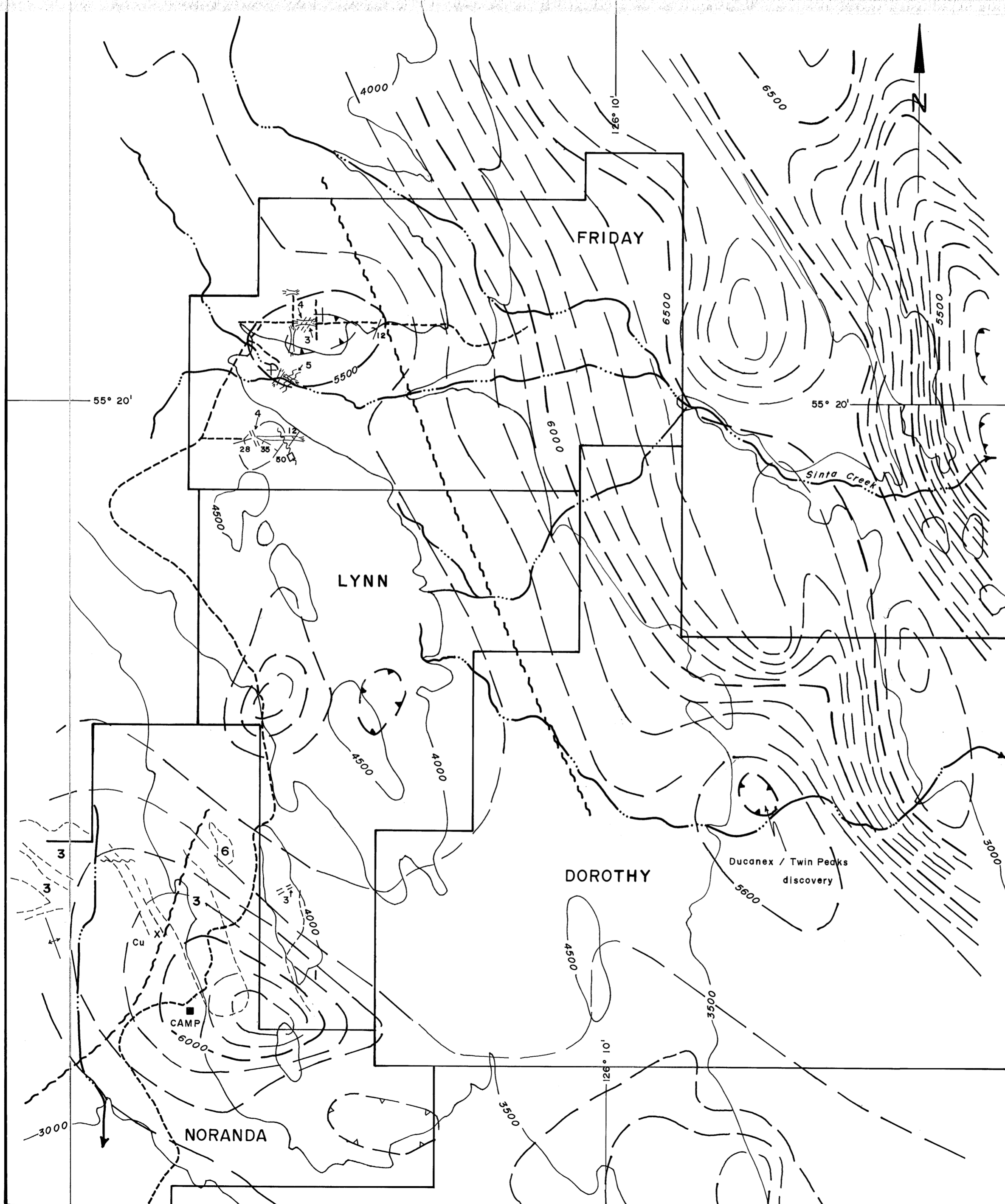


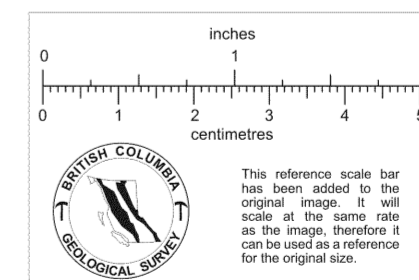
FRIDAY - GEOLOGY &  
AERO MAGNETICS

- CALIENTE MINING  
CORP.  
COPPER IN  
SOILS  
1" = 500'



LEGEND

- 1 Sediments — mainly mudstone
  - 2 Volcanics — mainly andesite tuffs
  - 3 Biotite feldspar porphyry
  - 4 Feldspar porphyry
  - 5 Felsite
  - 6 Monzonite, quartz monzonite
- 
- 28 / Horizontal } Bedding
  - + / Horizontal } Bedding
  - ~ Fault
  - - - Contact
  - - - Road
  - ||| Trench
  - Aeromagnetic contour
  - 100  $\mu$
  - 500  $\mu$
  - Approximate claim boundary



020679

CALIENTE MINING  
CORPORATION

FRIDAY CLAIMS

DESIGNED	SCALE: 1" = Approx 1 Mi
DRAWN C.L.C.	DATE: JAN. 1972