

Location of centre of mill tailings disposal area,
mill site, camp site and portal site in relation to the
"North America Datum."

Centre of mill tailings disposal area -

461,440E 6,566,310N.

Centre of mill site -

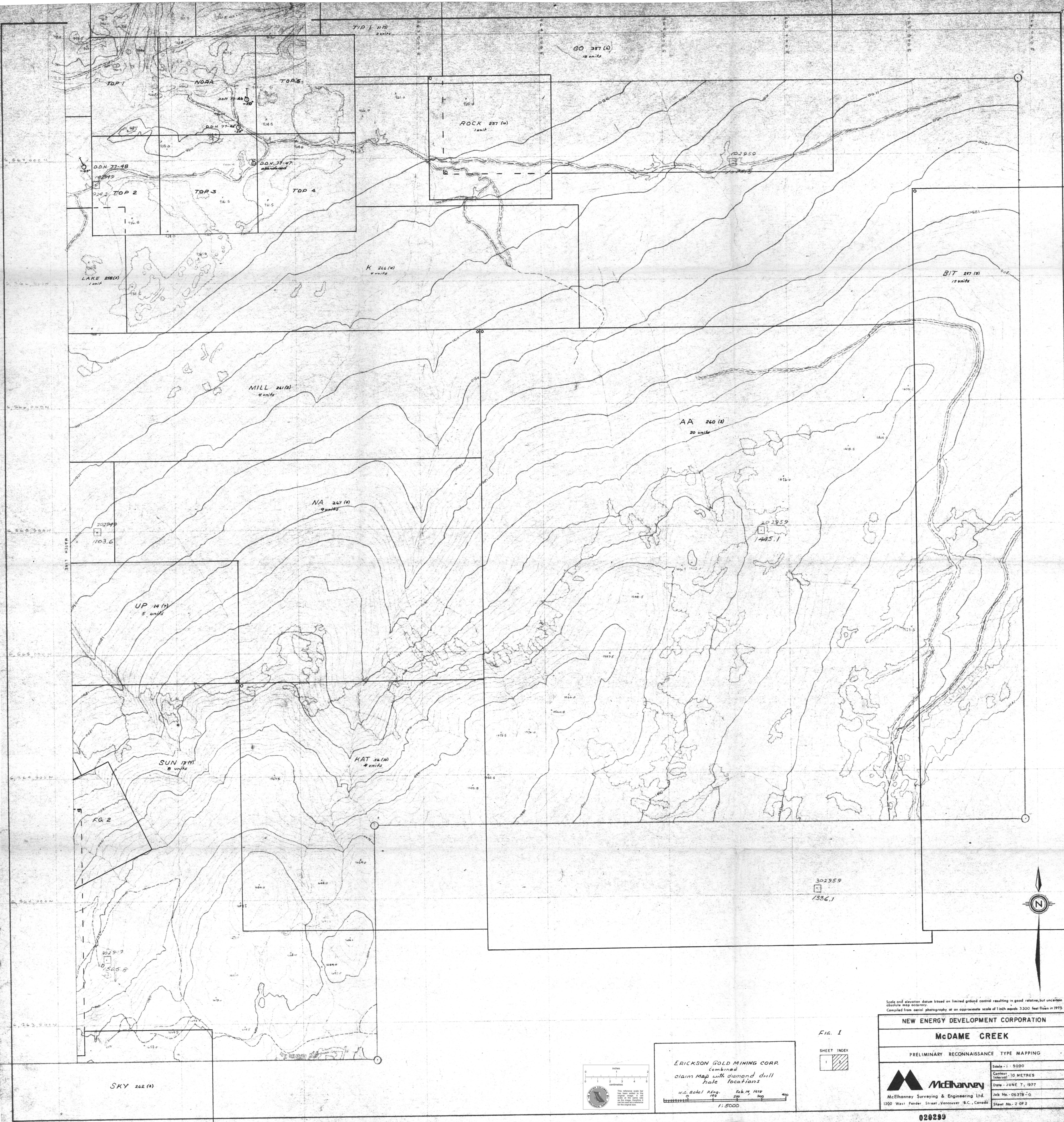
461,670E 6,566,500N.

Centre of camp site -

462,015E 6,566,830N.

Centre of portal site -

461,810E 6,564,440N.



Scale and elevation datum based on limited ground control resulting in good relative, but uncertain absolute map accuracy. Compiled from aerial photography at an approximate scale of 1 inch equals 3300 feet from 1975.

NEW ENERGY DEVELOPMENT CORPORATION

McDAME CREEK

PRELIMINARY RECONNAISSANCE TYPE MAPPING

Scale: 1:5000
 Contour Interval: 10 METRES
 Date: JUNE 7, 1977
 Job No.: 05378-G
 Sheet No.: 2 OF 2

McElhanney
 McElhanney Surveying & Engineering Ltd.
 1390 West Pender Street, Vancouver, B.C., Canada

020299

ERICKSON GOLD MINING CORP.
 Combined
 claim Map with diamond drill
 hole locations

W.C. Bohl Eng. Feb. 14, 1979
 1:5000

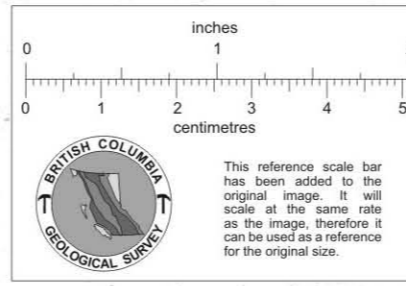


FIG. 1
 SHEET INDEX