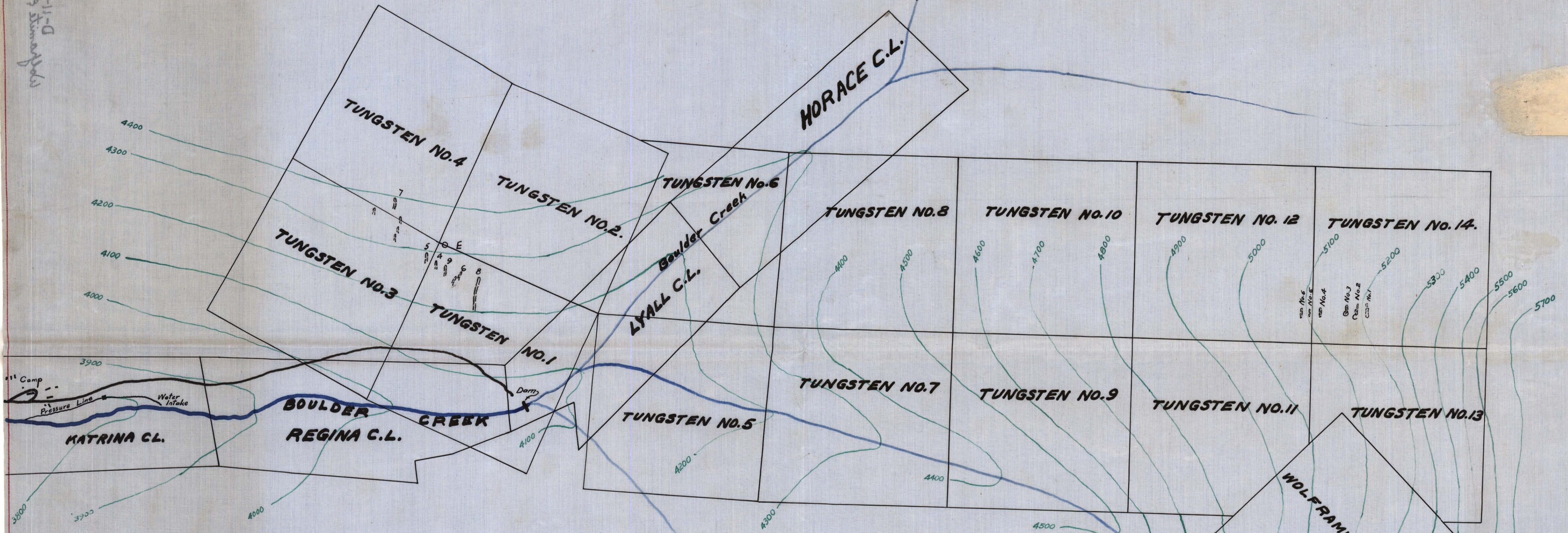
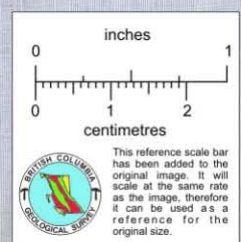


McPherson & Lyall
D-11-5



**TUNGSTEN & WOLFRAMITE GROUPS
BOULDER CREEK, ATLIN
ATLIN MINING DIVISION**



SCALE.
0 500 1000 1500

With report by Joseph T. Handy, I.M.E.,
Mining Engineer, Prince Rupert, B.C.

LEGEND.

- Granite felspar porphyry.
- Quartz vein
- Stripping
- Open cut
- Shaft.

Trench 3' x 4' deep
No. 6 quartz on dump.

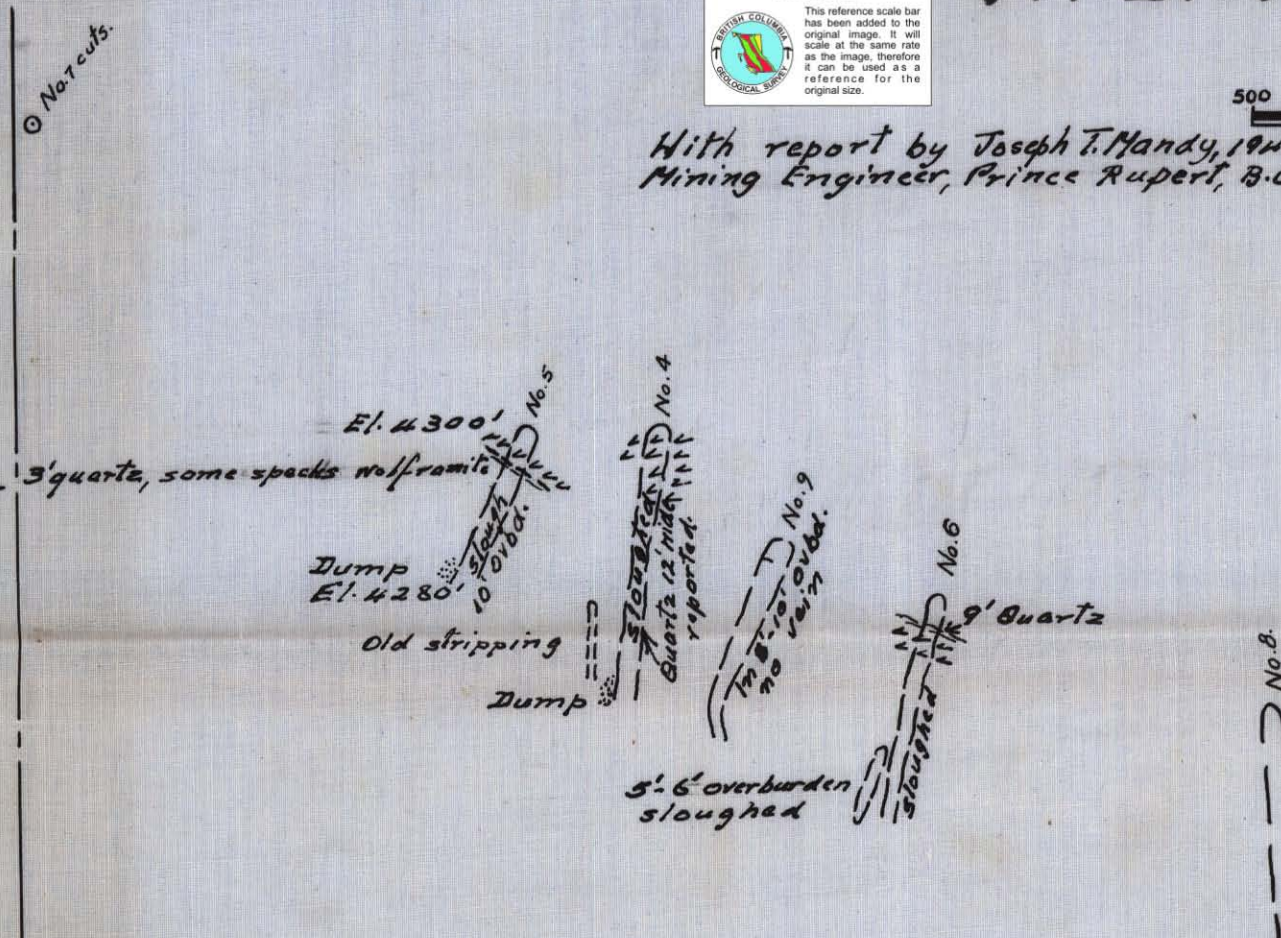
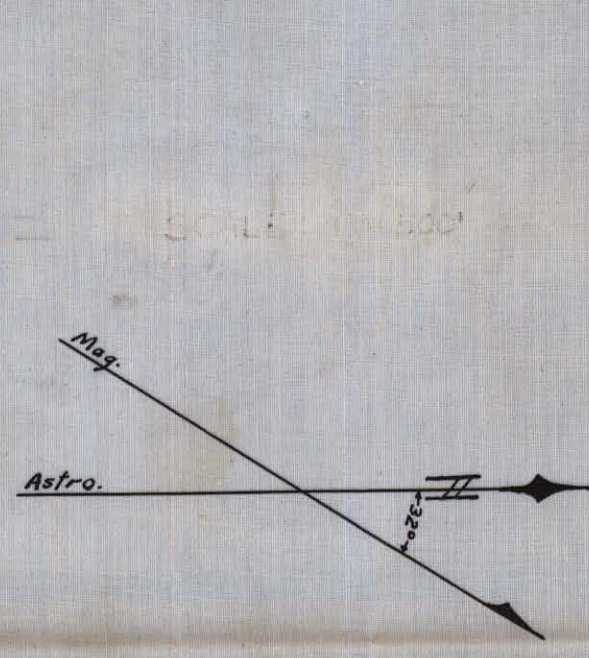
No. 5 trench 2' deep
sloughed. No vein.

Open-cut 3' deep,
No. 6 waxy quartz 6' wide & coated
with limonite. No wolframite
in quartz in place. Some
specimens of wolframite on dump.

No. 3 Open-cut on shaft 4 1/2' deep.
Quartz vein 4' wide, waxy with crystals coated
with iron oxide. No wolframite in place.
Sparse specks of wolframite in quartz on dump.

No. 2 shaft lined quartz 3' wide
some sparrey scattered wolframite

Dump of vein quartz, no wolframite
No. 1 El. 2560'.
Sloughed 2' deep.



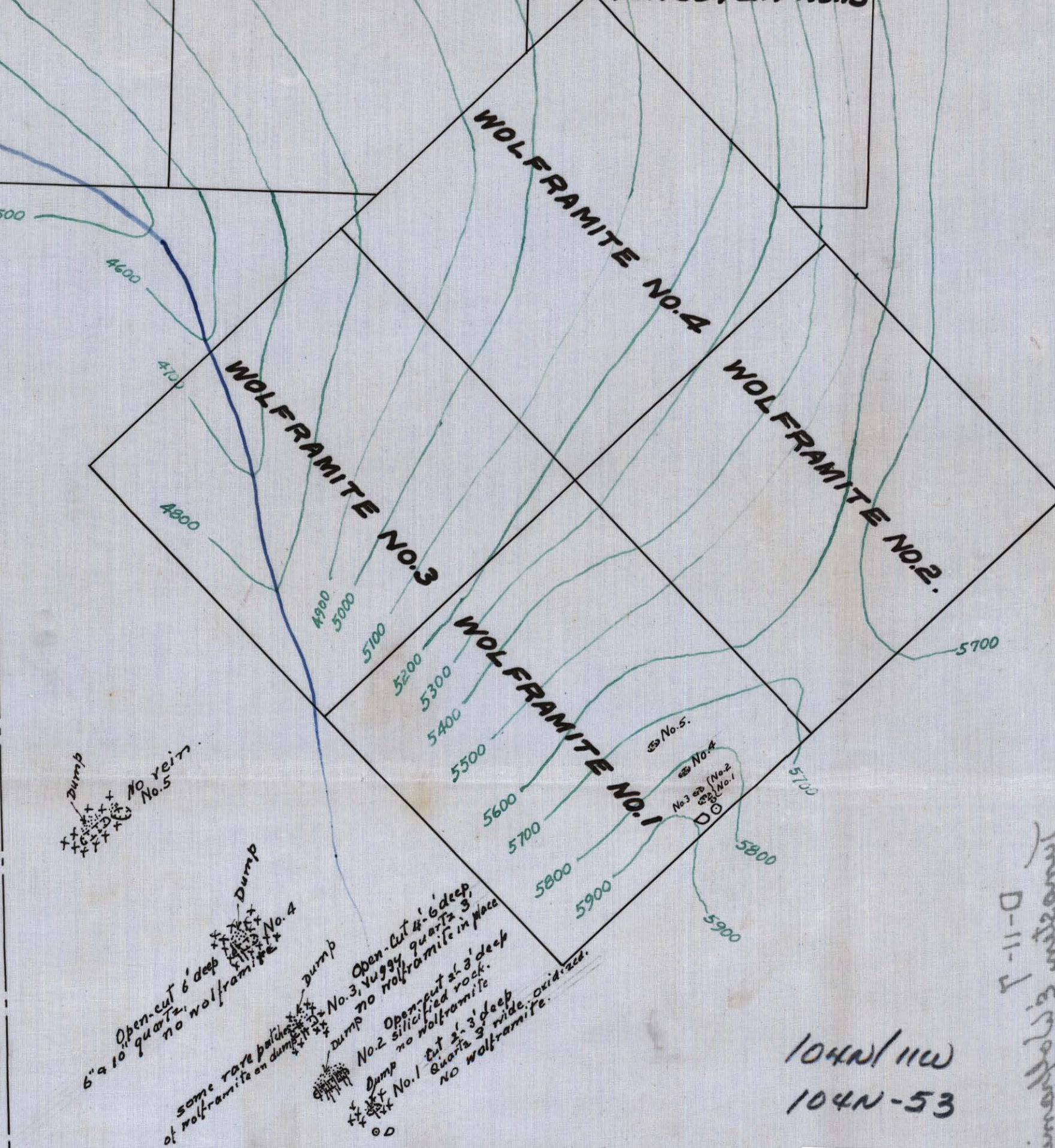
WORKINGS ON TUNGSTEN CLAIMS NOS. 1, 3 & 4.

SCALE.
0 100 200

In 3' 5' overburden
no vein.

WORKINGS ON TUNGSTEN CLAIMS NOS. 12 & 14.

SCALE.
0 100 200



WORKINGS ON WOLFRAMITE CLAIM NO. 1.

SCALE.
0 100 200

104N/11W
104N-53

020115

Tungsten & Wolframite
D-11-5