

LEGEND

TERTIARY (?)



Gabbro and diorite

LATE CRETACEOUS OR EARLY TERTIARY



Sloko Group  
Volcanic rocks

PRE-UPPER CRETACEOUS



Coast Intrusions  
Granitic rocks

LOWER & MIDDLE JURASSIC



Laberge Group  
Volcanic greywacke, siltstone

TRIASSIC (?)



Greywacke and other sedimentary rocks

PALEOZOIC (?)



Schist and gneiss

PRE-PERMIAN (?)



Porphyritic granodiorite

PENNSYLVANIAN AND PERMIAN



Cache Creek Group  
A. Chert, argillite, greenstone  
B. Limestone



Atlin and Nahlin Intrusion  
Periodotites; meta-diorite and meta-gabbro  
serpentine

PENNSYLVANIAN AND/OR PERMIAN



Mainly volcanic rocks

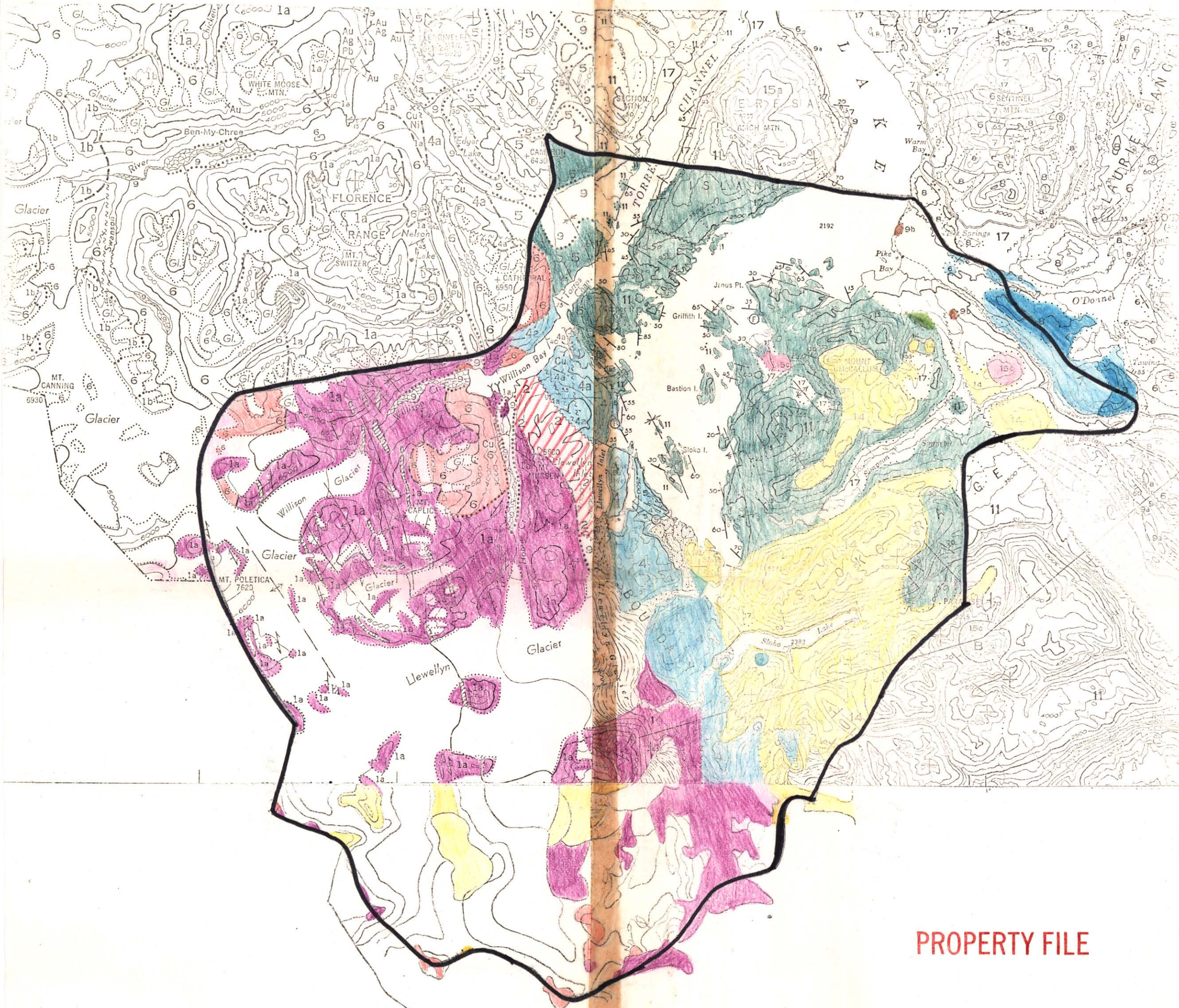
SCALE: ONE INCH TO FOUR MILES =  $\frac{1}{253,440}$



104M031 Glacier

PROPERTY FILE





PROPERTY FILE

MAP No.1

019999

