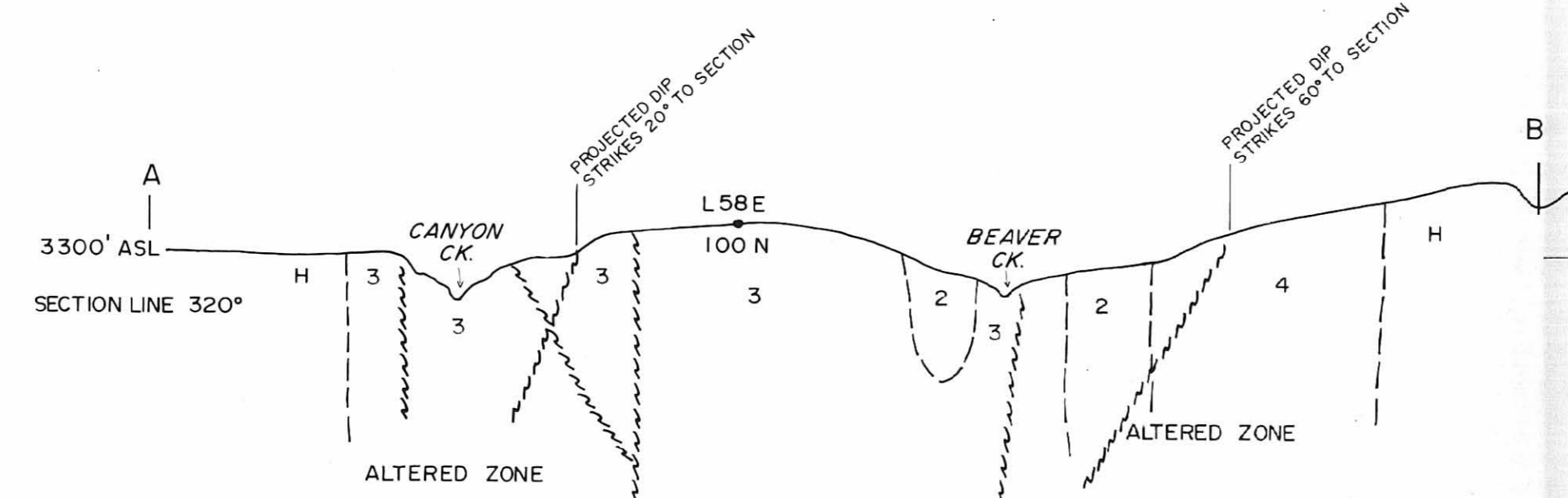
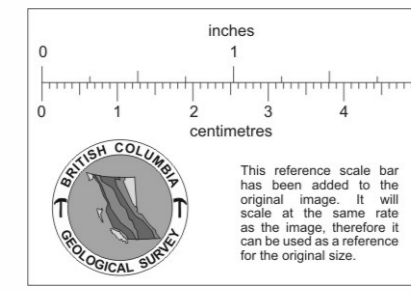


ASSAY

	Cu	Mo	Ag	Au
5226 J	0.05	1.68	0.4	0.048
5228 J	0.09	0.265	0.1	0.003



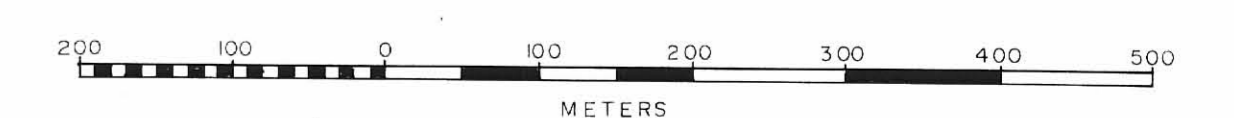
SECTION THROUGH A - B LOOKING NORTHEAST

- 6 DIABASE
- 5 FELSITE, FELSITE PORPHYRY
- 4 QUARTZ FELDSPAR BIOTITE PORPHYRY
- 3 GRANODIORITE, GRANODIORITE PORPHYRY
- 2 DIORITE, GABBRO
- 1 META VOLCANICS, META SEDIMENTARY
- H HYBRID ROCKS

SYMBOLS

- OUTCROP
- TALUS OR RUBBLE
- ATTITUDE OF VEIN
- SHEAR ZONE OR FAULT
- DIRECTION OF MOVEMENT ON FAULT
- DYKE
- GEOLOGICAL BOUNDARY OR CONTACT

ALTERED ZONE (WEAK)



TO ACCOMPANY GEOLOGICAL REPORT ON THE CANYON PROPERTY,  
LIARD MINING DIVISION, B.C., BY R.G. MACARTHUR  
DATED: NOVEMBER 1978

REVISED	CANYON CREEK PROJECT	
	GEOLOGICAL MAP	
PROJ. No. 1018	SURVEY BY: R. MACARTHUR	DATE: NOV. 1978
N.T.S. 1:5000	DRAWN BY: JAN VAN VOORST	SCALE: 1:5000
DWG. No. 2	<b>NORANDA EXPLORATION</b>	
	OFFICE: VANCOUVER	

019745