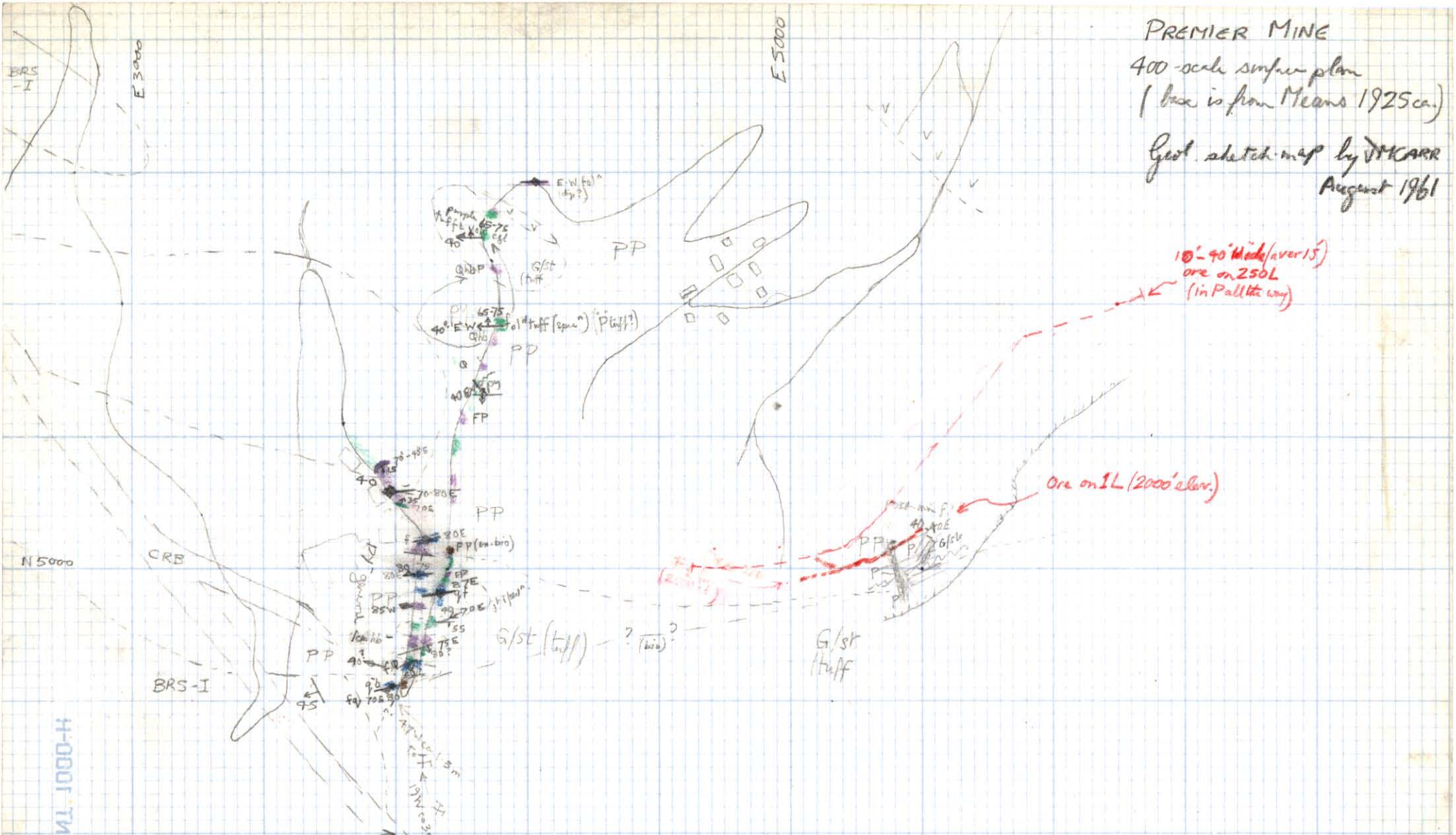


PREMIER MINE

400-scale surface plan
(base is from Means 1925 ca.)

Geol. sketch map by JMCARR
August 1961



specⁿ of
Hudyle sent
to Vic Preto at VBC
- Hudyle is similar to
the pot. mineral dyes at
Granduc.

(From 1926 maps & X-section
on 400 & 40 scale by A.H. MEANS
& W.D. BURTON, the schist at glary hole
strikes N65E for 350' in and dips
at 75° to the north. Between surface elevⁿ
2140' and 1200' (bottom of ore body).)

■ vert lamⁿ/folⁿ (F = fluorophenocryst present
in Premier P?)
■ hb & fluor alignment

- (Q: 93 plagioclase) (Premier P?)
reddish altⁿ qz - hb - fluor - P (chilled in tuff.)
(white-wk; sparsely; pydms)
- "typical" PP (with outⁿ fine fluor, qz, etc
flow all or original; hb also aligned)
- green-altⁿ feld. qz - fluor P w. bioⁿ (plagioclase but coarse)
(has seen only with P. alt.)
- (purple) tuffs & volc. l.
- g/st (-dⁿ tuff?)

Scale 1 in = 400 ft
(glary hole N5000
E5400)

019214

