

CIM Dist 6 Oct 86

86/10/04

Silbde Premier

Paul Wodjak

Prod'n 1.8 Moz au 38 Moz Ag

In Hazelton Volcs 210 - 186 Ma

Texas Ck 203 - 196 Ma

104B 54

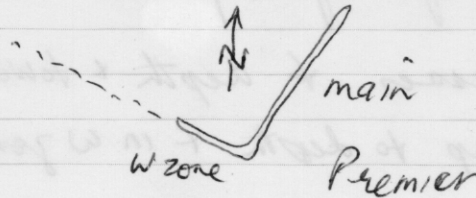
Property

Andesite

LT mod W dip

Sills + Dykes of PPY (date - off Texas Ck; text + compsn
uncon. vary)

maroon + green volcanoclastics



Ore in silic bx → vein stockworks

qtz adularia

frags in bx can be pervasively altered + wispy

6.37 MT / 06ozdu / 2.15 Ag Nov 85

sulphide - above 2 level - low
py sphal galenaBx gen ~~at~~ at ppy / and contacts

ore @ FW of ppy at depth → HW near surface

old slopes have collapsed - problem to drill + to estimate
grades + tonnage

Correspondence/Notes

Mineralogy - py sphal galena
(low ag)

gold mainly as electrum

ag minerals - vfg - tetrahedrite / polybasite
pyrargyrite
rare arseno

multiphase fracturing
qtz kspn calcite

low ore qtz cal
rhodochrosite

Bx Zones - open space filling

ag/am decreases \times depth \times toward W zone

base metals up to depth \times in W zone also

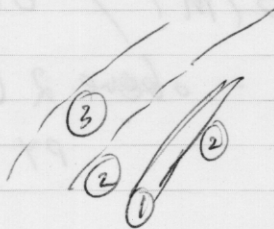
alt n

① Qtz kspn mainly in veined \times bxt d rx

② Halo of Qtz sercite (widespread)

~~carb~~ Carbonate alt and \rightarrow qtz ser alt and (bleached tan)
(green)

③ outer carbonate alt n



Genesis

struct cutld - introduced into flted \times tilted rx

pp along flt zones @ time of submarine \rightarrow subaerial conds

pp channelled ore \times localized flts that channelled ore schu