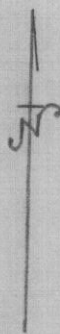
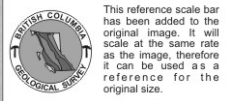
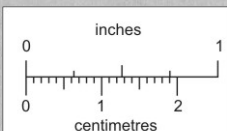


SILVER TIP GOLD MINES LTD  
 211 PEMBERTON BLDG.,  
 VICTORIA, B.C.

104B/1E  
 104B-43

1949 SHIPMENT OF 9.24 TONS  
 AU. 0.475 GROSS FOR SHIPMENT  
 AG. 73.6 To C.M. & S. Co 1139.65  
 Pb. 16.6 TREATMENT @ 15.10 139.60  
 Zn 23.4 FREIGHT 289.74  
 NET 694.31.  
 SHIPMENT MADE FROM H.G. O.C.

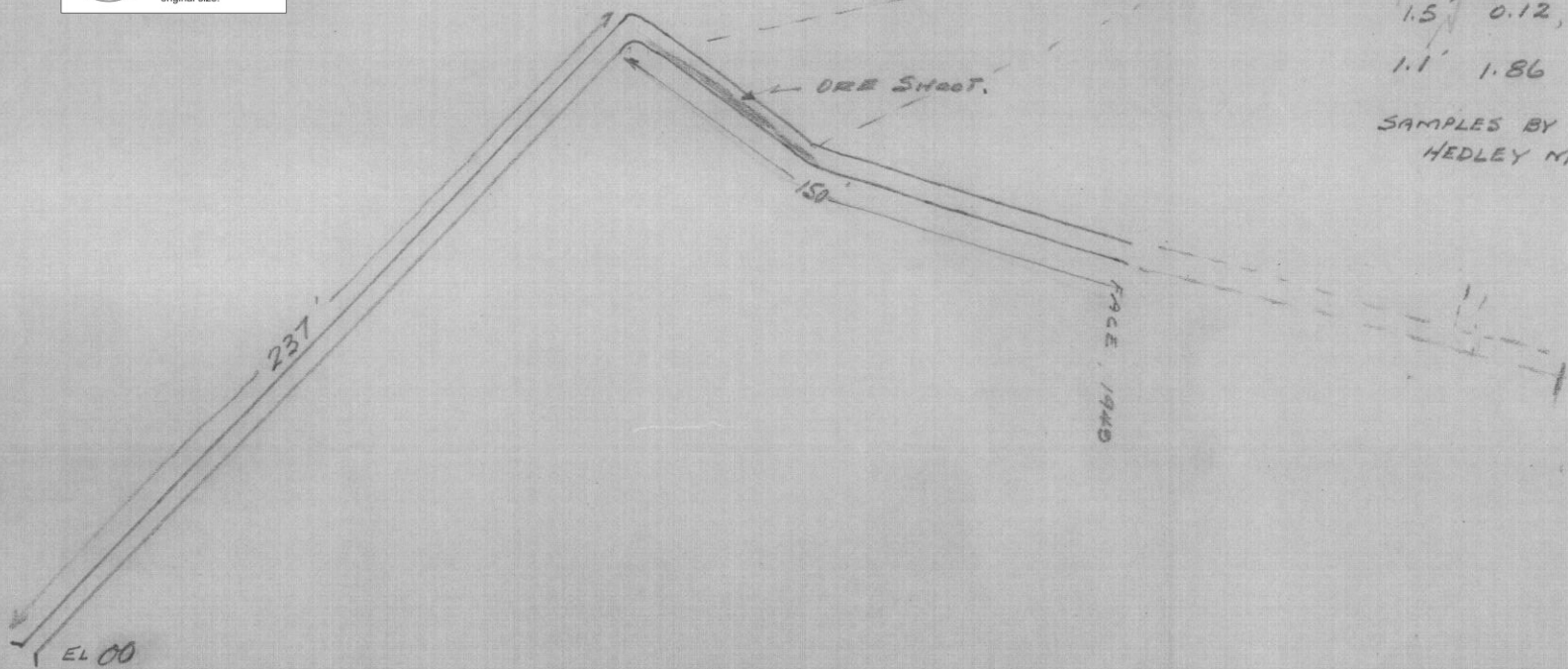


High Grade O.C.

AU AG Pb Zn  
 - 0.02, 5.4, 6.2, 5.1 - O.C.

EL 114.5'  
 00+114.5  
 135°  
 1.5' 0.12, 23.8, 7.3, 7.9  
 1.1' 1.86 236.9 9.9 17.3.

SAMPLES BY JACK YOUNG  
 HEDLEY MARSCOT ENGINEER.



COMPASS SURVEY  
 MAY P.J. TUNNEL  
 AND OPEN CUTS  
 SCALE 50'-1"

SEPT 14, 1949 J. HOVELAND.

COURTESY W. TOOTH  
 STEWART, B.C.

019139

Salmon River Stewart. (4)