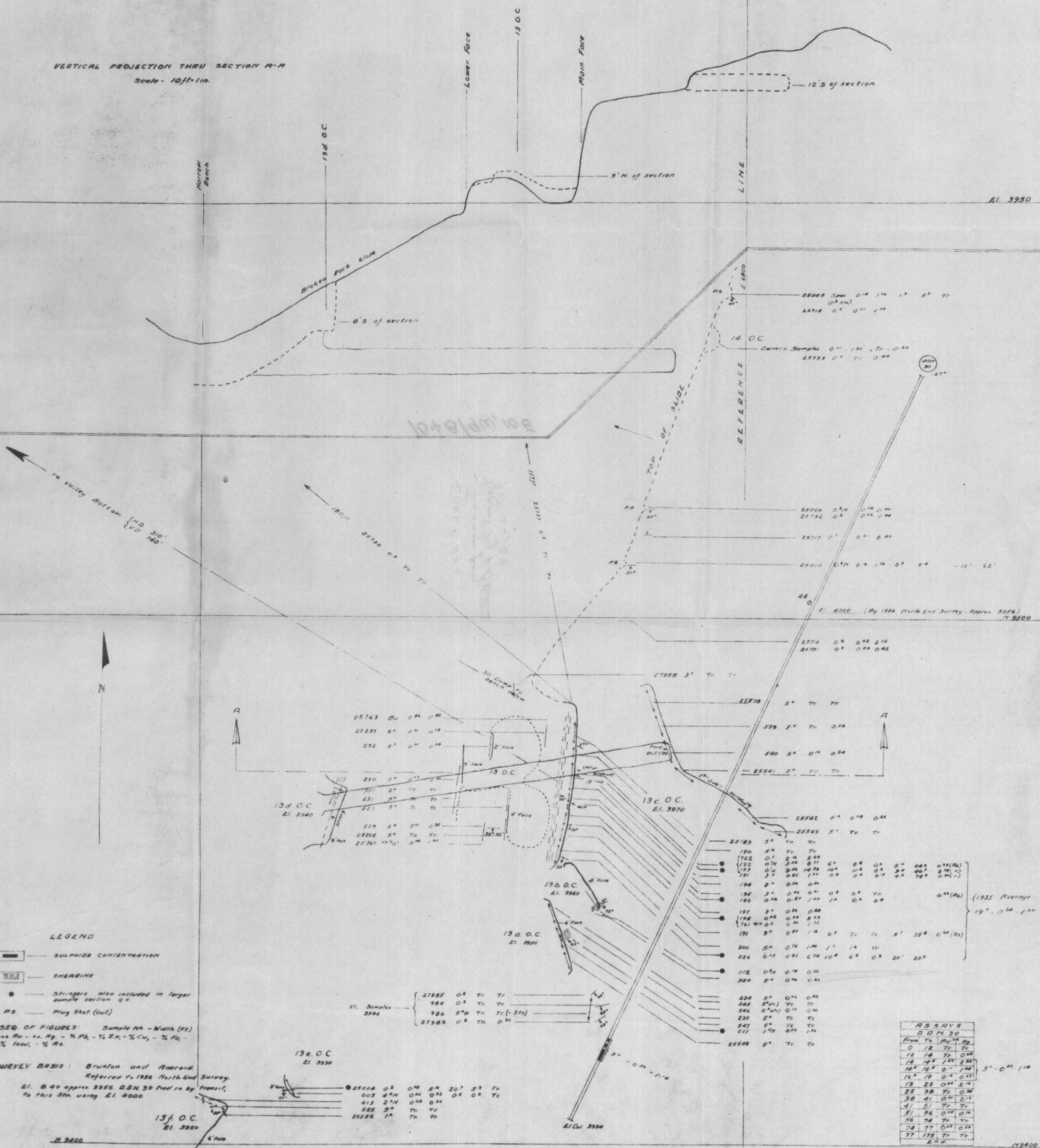


VERTICAL PROJECTION THRU SECTION A-A
Scale - 10ft=1in.



LEGEND
 — SULPHIDE CONCENTRATION
 — SHEARING
 — Stringers also included in larger sample section q.v.
 — Plug Shot (cut)

SEQ. OF FIGURES: Sample No. - Width (ft.)
 as Au - ss, Ag - % Pb - % Zn - % Cu - % Fe - % Insul. - % As.

SURVEY BASIS: Brunton and Aneroid.
 Referred to 1926 North End Survey.
 El. B 40 approx. 3956. D.B.H. 30 feet in by Transit.
 To this 3ft. using El. 2000

El. Samples —
 27885 0.8 Tr Tr
 980 0.8 Tr Tr
 986 5.7 Tr Tr (-5ft)
 27989 0.8 Tr Tr

190	5.7	Tr	Tr
192	0.7	2.7	3.4
193	0.7	3.7	8.1
191	3.7	0.8	1.0
194	3.7	0.04	0.4
195	3.7	0.4	0.4
196	0.4	0.87	1.0
197	3.7	0.4	0.8
198	0.4	0.4	0.4
199	3.7	0.4	0.4
200	5.7	0.7	1.7
224	0.7	0.4	1.0
012	0.7	0.4	0.4
548	5.7	0.4	0.4
238	5.7	0.4	0.4
348	5.7	Tr	Tr
346	0.7	0.4	0.4
235	5.7	Tr	Tr
545	5.7	Tr	Tr
011	1.7	0.4	1.4
25548	5.7	Tr	Tr

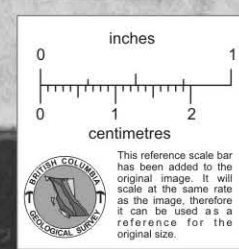
195	5.7	Tr	Tr
196	0.7	2.7	3.4
197	0.7	3.7	8.1
198	3.7	0.8	1.0
199	3.7	0.04	0.4
200	3.7	0.4	0.4
224	0.7	0.4	1.0
012	0.7	0.4	0.4
548	5.7	0.4	0.4
238	5.7	0.4	0.4
348	5.7	Tr	Tr
346	0.7	0.4	0.4
235	5.7	Tr	Tr
545	5.7	Tr	Tr
011	1.7	0.4	1.4
25548	5.7	Tr	Tr

Canadian Exploration, Limited
 TORONTO Oct 30/39
 2228
PREMIER GOLD MINING CO. LTD.
 PREMIER #C
UNUK GOLD GROUP
 Unuk R. Area. B.C.
 13 O.C. and VICINITY
 Assay Plan and Section.
 Jan 17, 1936
 Drawing No 1813
 Min. File 3-1813

SHEET NO
1
 TO ACCOMPANY REPORT BY
H. L. Batten.
 OCT 26, 1939.

13g.O.C. El. 3950
 25550 6.7 Tr Tr
 25556 1.0 Tr Tr
 585 5.7 Tr Tr
 013 2.7 Tr Tr
 005 4.7 Tr Tr

scale 0 10 20 30 40 50 60 Feet



019054