

018751

DRILL HOLE NO. 1 - 80° South

- 0 - 9.9 ft. - Very fine-grained, silicified sedimentary rock.  
Finely disseminated pyrite.
- 19.9 ft. - As previous with some stringers (1/4 inch) of  
massive pyrite.
- 29.9 ft. - Silicified sedimentary rock.  
Fine-grained; disseminated pyrite; very fine-grained.
- 37.8 ft. - As previous.  
Very fine pyrite on fractures and as disseminations.

END OF HOLE

*W. Carter, R. G. G.*

DRILL HOLE NO. 2

- 80° South

- 0 - 4.5 ft. - Altered feldspar porphyry, 10 - 20% sulfides, mainly sphalerite and pyrite, minor chalcopyrite and steely grey metallic mineral.
  
- 11.5 ft. - Alternating feldspar porphyry and silicified siltstone. Brecciated in part. Up to 5% sulfides - mainly pyrite with some sphalerite.
  
- 20.7 ft. - Silicified siltstone.  
Minor disseminated pyrite.
  
- 29.5 ft. - Feldspar porphyry - fine-grained.  
Inclusions of silicified siltstone.  
1 mm quartz stringers.
  
- 38 ft. - Silicified siltstone.  
Minor disseminated pyrite.

END OF HOLE

*N. Carter, 1/10/94*

DRILL HOLE NO. 3

- 68° South

- 0 - 7.8 ft. - Silicified siltstone.  
Brecciated with introduction of quartz. 1/8 to  
1/4 inch stringers of pyrite.
- 15 ft. - As above.  
Pyrite in 1/4 inch stringers and coating hairline fractures.
- 20.8 ft. - As above, but with 20 - 30% sulfides as stringers and in  
pods. Principally pyrite.

END OF HOLE

*N. Clanton, 1/6/69*

DRILL HOLE NO. 4

- 75° South

- 0 - 6.2 ft. - Silicified siltstone 10 - 20% sulfides -  
mainly crystalline pyrite with some minor  
chalcopyrite.
  
- 12 ft. - As previous, but with only minor pyrite in quartz -  
carbonate stringers.
  
- 17.7 ft. - Silicified siltstone.  
Very minor disseminated pyrite.

END OF HOLE

*W. Carter, 1/6/69.*

DRILL HOLE NO. 5

- 80° South

0 - 8 ft. - Silicified siltstone.

Stringers of pyrite with minor sphalerite.

- 11.2 ft. - As previous but with up to 30% sulfides - pyrite with some  
chalcopyrite and sphalerite.

- 20.5 ft. - Silicified siltstone - light grey - minor very fine  
grained disseminated pyrite.

END OF HOLE

*N. Carter, P. Eng.*

DRILL HOLE NO. 6

- 70° South

- 0 - 3.5 ft. - Silicified siltstone  
Brecciated. Up to 1 inch wide stringers of  
massive pyrite.
- 10.7 ft. - As previous.  
Only occasional pyrite stringers.
- 13 ft. - Silicified siltstone; brecciated sections with quartz,  
pyrite and minor chalcopyrite.
- 23 ft. - Light grey silicified siltstone.  
Very minor disseminated pyrite.
- 30.9 ft. - As previous.

END OF HOLE

*W. Carter, 1/6/59*





DEPARTMENT OF MINES AND PETROLEUM RESOURCES  
VICTORIA

SAMPLE RECEIVED FROM..... N. C. CARTER

ADDRESS..... Geological Division

LABORATORY No.	SUBMITTER'S MARK	LABORATORY REPORT				
		IN PPM			IN %	
		Au	Ag	Cu	Pb	Zn
	HOLE #1					
17271M	0- 9' 11"	<1	41	0.041	0.12	0.36
17272M	9' 11"-19' 10"	<1	31	0.032	0.05	0.11
17273M	19' 10"-29' 10"	<1	17	0.042	0.06	0.12
17274M	29' 10"-37' 8"	<1	15	0.014	<0.01	<0.01
	HOLE #2					
17275M	0- 4' 6"	<1	270	0.423	1.95	10.40
17276M	4' 6"-11' 6"	<1	270	0.450	0.42	1.37
17277M	11' 6"-20' 8"	<1	29	0.209	0.14	0.24
17278M	20' 8"-29' 6"	<1	<10	0.028	0.11	0.07
17279M	29' 6"-38'	<1	<10	0.012	<0.01	<0.01
	HOLE #3					
17280M	0- 7' 10"	<1	17	0.187	0.16	0.56
17281M	7' 10"-15'	<1	<10	0.389	0.86	3.31
17282M	15' -20' 10"	<1	<10	0.317	0.22	1.15
	HOLE #4					
17283M	0- 6' 2"	<1	100	0.185	0.68	2.39
17284M	6' 2"-12'	<1	37	0.142	0.02	0.14
17285M	12' -17' 8"	<1	23	0.032	0.01	0.02
	HOLE #5					
17286M	0- 8'	<1	27	0.537	0.06	0.05
17287M	8' -11' 2"	<1	51	0.894	0.10	0.32
17288M	11' 2"-20' 6"	<1	<10	0.026	<0.01	0.01

THIS DOCUMENT, OR ANY PART THEREOF, MAY NOT BE REPRODUCED  
FOR PROMOTIONAL OR ADVERTISING PURPOSES.

DATE..... January 11, 1977

*Wesley M. Johnson*  
CHIEF ANALYST AND ASSAYER.





DEPARTMENT OF MINES AND PETROLEUM RESOURCES  
VICTORIA

SAMPLE RECEIVED FROM..... N. C. CARTER ..... Page 2

ADDRESS..... Geological Division .....

LABORATORY No.	SUBMITTER'S MARK	LABORATORY REPORT				
		IN PPM			IN %	
	HOLE #6	<u>Au</u>	<u>Ag</u>	<u>Cu</u>	<u>Pb</u>	<u>Zn</u>
17289M	0- 3' 6"	<1	<10	0.723	0.17	0.67
17290M	3' 6"-10' 8"	<1	<10	0.061	0.01	0.03
17291M	10' 8"-13'	<1	<10	0.363	<0.01	0.01
17292M	13' -23'	<1	<10	0.017	<0.01	0.01
17293M	23' -30' 9"	<1	<10	0.008	<0.01	<0.01
	HOLE #7					
17294M	0- 1'10"	<1	<10	0.570	0.01	0.01
17295M	1'10"-10' 2"	<1	<10	0.235	<0.01	<0.01
17296M	10' 2"-23'10"	<1	<10	0.234	<0.01	<0.01
17297M	23'10"-26'	<1	<10	0.014	<0.01	<0.01

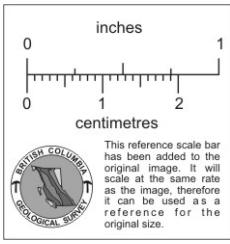
THIS DOCUMENT, OR ANY PART THEREOF, MAY NOT BE REPRODUCED  
FOR PROMOTIONAL OR ADVERTISING PURPOSES.

DATE..... January 11, 1977 .....

*Wesley M. Johnson*  
.....  
CHIEF ANALYST AND ASSAYER.

*Handwritten scribbles at the top of the page.*

*Rucky Strike  
1-10*

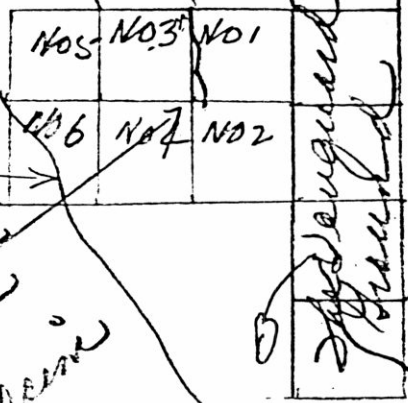


*CG  
L3975*



*See 1 & 2  
See 3  
See #3*

*base de teler  
1-6*



*Area DIA NO 10 Drilled  
7 Holes were drilled  
Total of 200 ft  
Mostly low NO 1 (some  
breccia)  
Trenching and  
blowing pits  
Mostly in the  
area*

*KITSAOLT RIVER  
- TRAIL TO POWER PLANT.*

Three  
three  
Holes  
were drilled  
in one  
cut  
(North Bluff)

#	5	-	20'	"	"	80'
#	6	-	30'	"	"	70'
#	7	-	26'	"	"	58'

Core Recovery

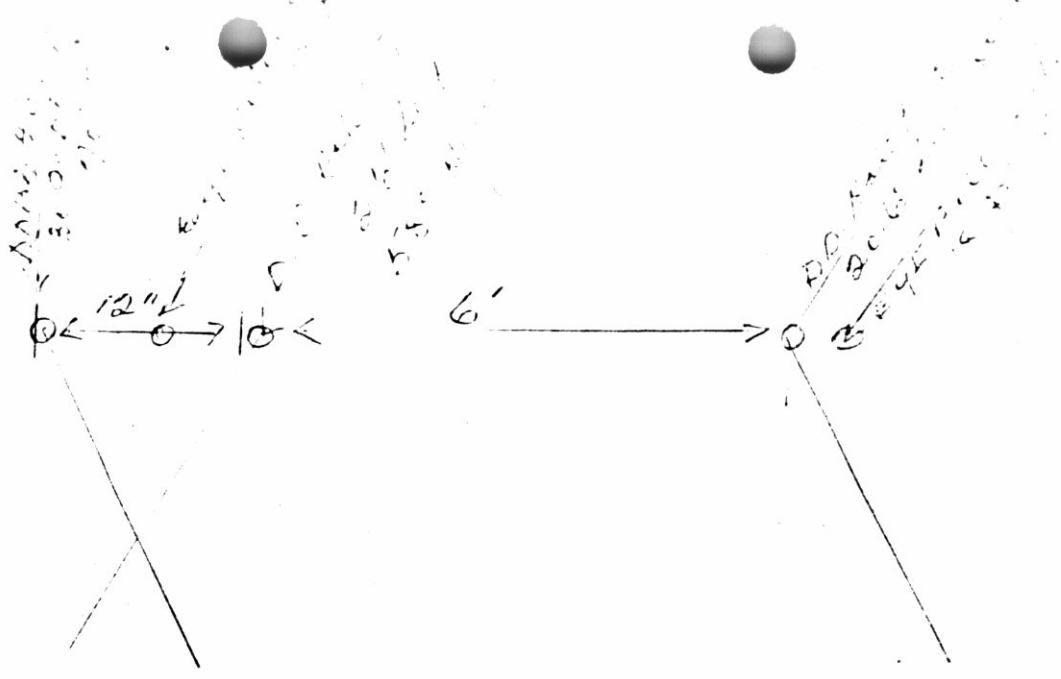
Strike - East and West  
Dipping to North 80°

Jack Warr Geo. & Charlie  
Child Eng. from the Imperial  
Oil Co. have just made an  
examination of these cuts and  
collected the core.

David Cook Senior Geo. Exploration  
and Raymond C. Busquet project  
Geo. Exploration from Comstock  
came and examined the core  
specimens to these three other  
Comstock Geologists came to  
examine the core

Dr. A. Cook returned and  
also made a field examination  
of the drilled area on several  
blows and lucky strike

Sept 1/76 - L. Callison



These Holes were drilled in  
 one cut. - north Bluff - 1200' from  
 #4 Hill in south Bluff  
 On Lucky strike no 2 claim

	#	=	=	26'	Sept 11, 1976
"	#	4	=	17' 8"	
"	#	5	=	26' 6"	
"	#	6	=	30' 9"	
"	#	7	=	26'	

8 Eye Bolt Holes

Drilled 18" deep = 12"  
 One of these Holes cut  
 with hole of 6" in  
 south Bluff 6"

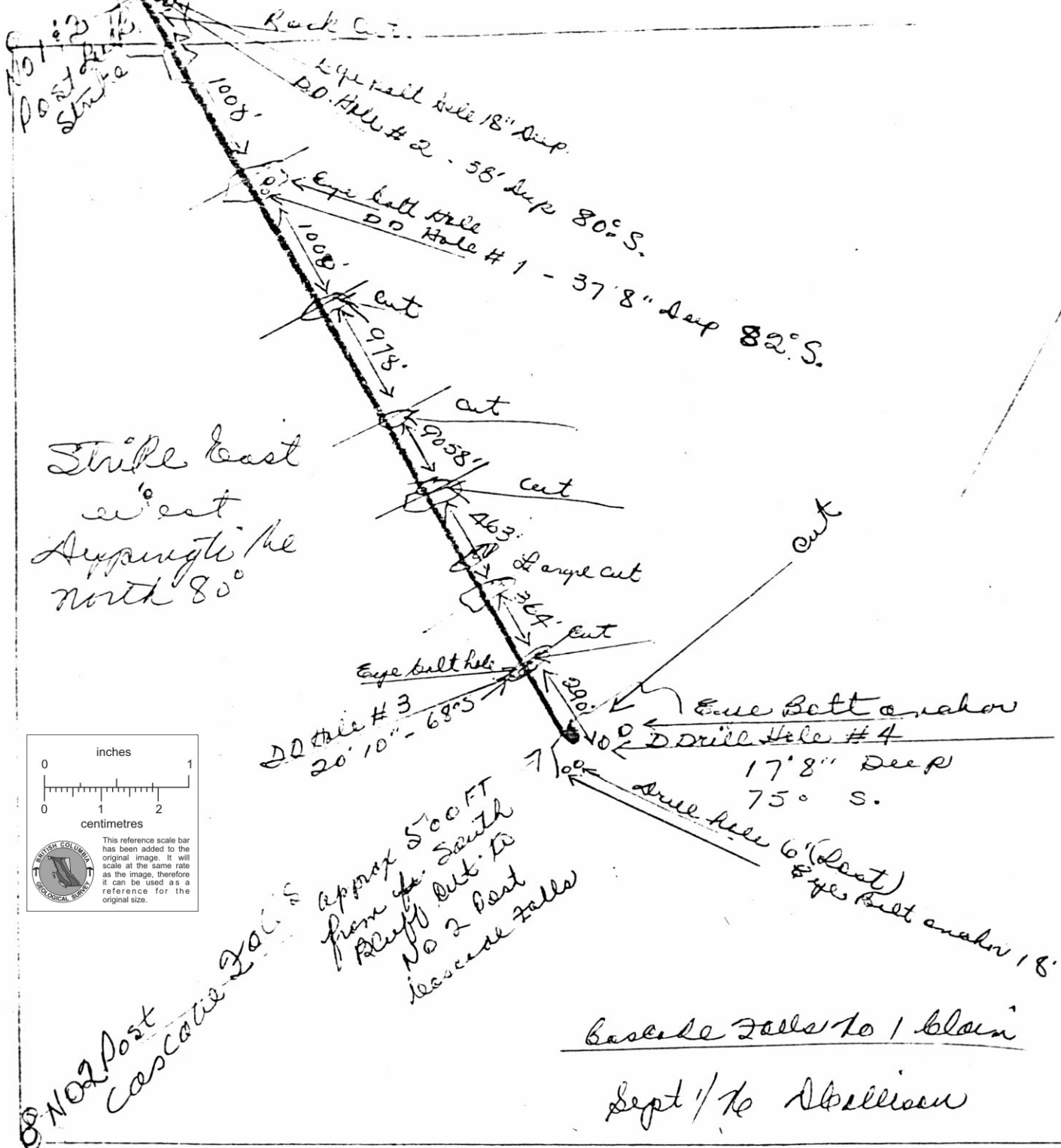
Total footage Drilled 214' 9"

All holes had some  
 vein material - and in  
 my opinion they were all  
 well mineralized.

A. Carlson  
 Sept. 11, 76

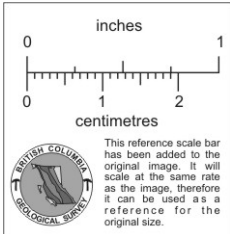


Section from South Cliff  
1260'



NO 1 Post  
Strike

Strike East  
west  
Approx. to the  
North 80°



Eye ball hole  
DD Hole # 3  
20' 10" - 68.5

Eye Ball anchor  
DD Hole # 4  
17' 8" Deep  
75° S.

Approx 500 FT  
from the South  
Bluff out to  
No 2 Post  
ascend falls

Basalt falls to 1 plain

Sept 1/10 Skellison