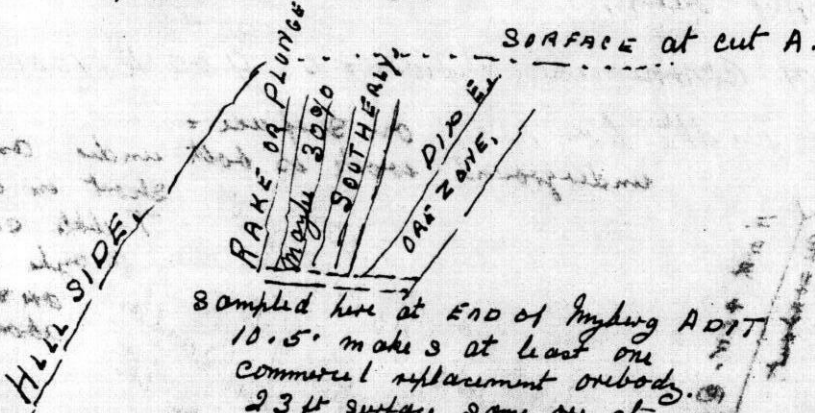


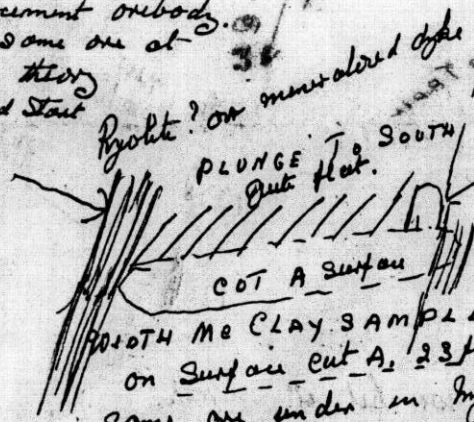
COT A = strike about N. 90 W.

DIP - approx 70% EASTERLY.

RAKE OR PLUNGE



Sampled here at END of Imberg ADIT  
 10.5. make s at least one  
 commercial replacement orebody.  
 23 ft surface some ore at  
 depth on same theory  
 10.5. a good start

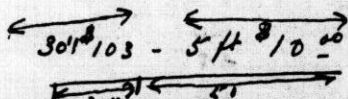


Some ore under in Imberg  
 10.5" width exposed  
 by drift, crosscut,  
 marked ←  
 He took a 11.5"  
 huge sample.  
 metal & mesh.

Previous sampling 26 ft on Surface  
 Cut A. Gold  $\frac{.8}{10}$ . Copper 2%. Sil 70%

Imberg Crosscut some ore rechecked,

Confirmed by Geo Fand of Bralorne  
 by letter. 10232. 30 inches of Copper #103  
 & 5 ft of broken wall material #100



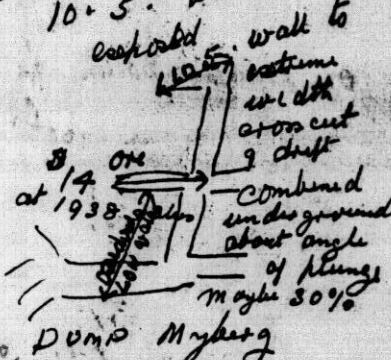
Next sampling 9 ft - just for Gold by a  
 miner named Linklater 132 oz Gold  
 102 ft 32. over the whole width.  
 no check on Sil or Copper.

It's pretty well a cinch Im Clay

will get \$25 to \$30 average

at this point. Picked out a showing above & below

Remember that rake or plunge  
 when we drove 17 ft on  
 Imberg to intersect and  
 encountered the ore in the  
 roof - I drove 10 ft more  
 & crosscut in Imberg.  
 width showing ore on  
 quartz mineral - gouge  
 10.5. width  
 exposed



This must be Im Clay's  
 opinion of ore chute at cut A  
 and the same orebody in and  
 at the extreme face 20 ft  
 below in Imberg tunnel.  
 otherwise he would not have  
 sampled as he did.

This has been my hope  
 & opinion since we drove  
 the 17 ft drift.  
 on strike of main ZONE

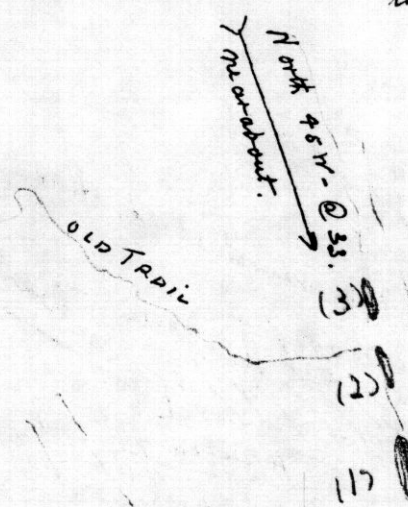
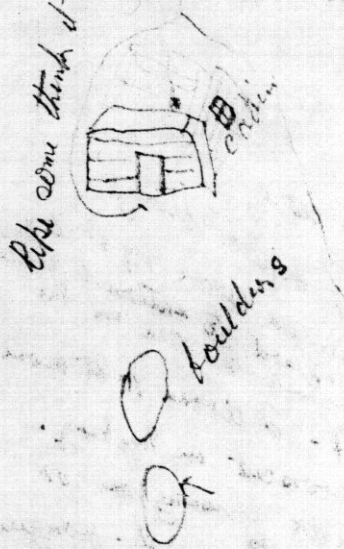
Re Gerhardt A.O.T.

This would make the objective 90 to 125 ft on Gerhardt and to continue the main drift the nearest spot to the gold & copper on Spur vein.

Approximate length of commercial showing is 900 to 1000 ft, most cut, good width has one on surface = underground work is both under and short in length

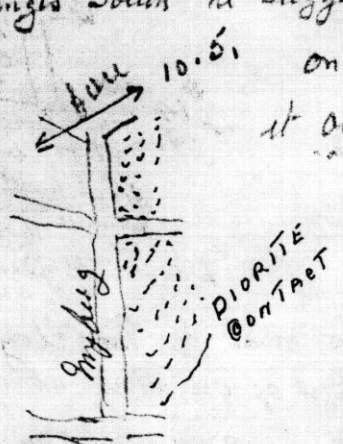
like some think it is at the end of the line.

Tribble said maybe the ore is above you

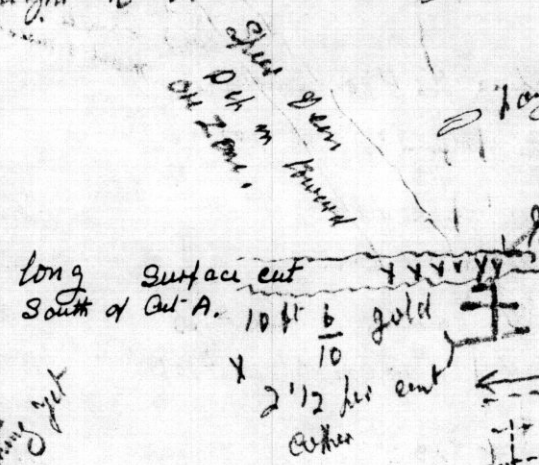


new lead ore just some blunders like No. 1 at shot this is a section gallery ore sent in three samples more ore so heavy its bore to the ground.

on plunges South he suggests we hit it smack on the nose just where it ought to be

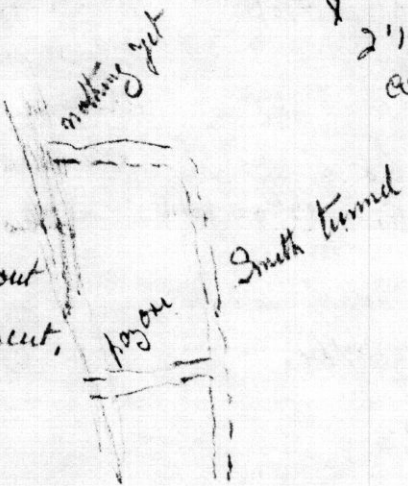


9 ft. good ore.



Myberg under footwall looks at maybe 90% rake? that way about 10 ft. # ore plunges South we are just into replacement on the Myberg tunnel

His idea on Smith tunnel. ore dip just about reached in crosscut,



He Mc Clay thinks we are right up to the ore but not into it yet. by his survey a few ft are needed to cut thru foot wall

