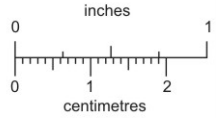


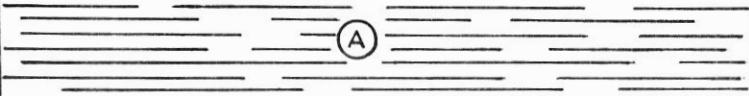
evolution of the upper kitsault syncline

M. A. Mi
May 9,



BRITISH COLUMBIA
GEOLOGICAL SURVEY
This reference scale bar has been added to the original image. It will scale at the same rate as the image, therefore it can be used as a reference for the original size.

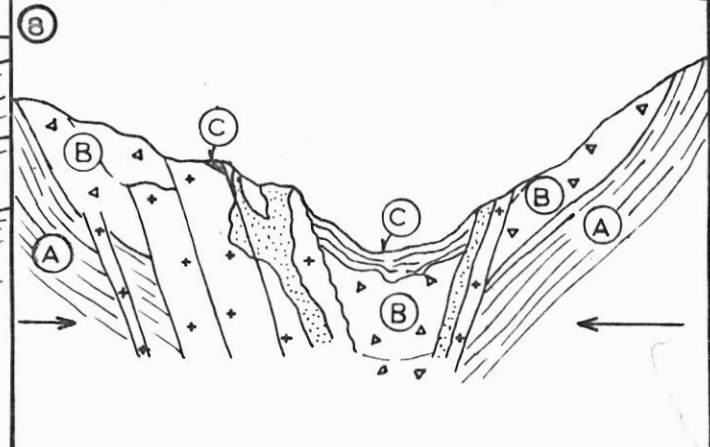
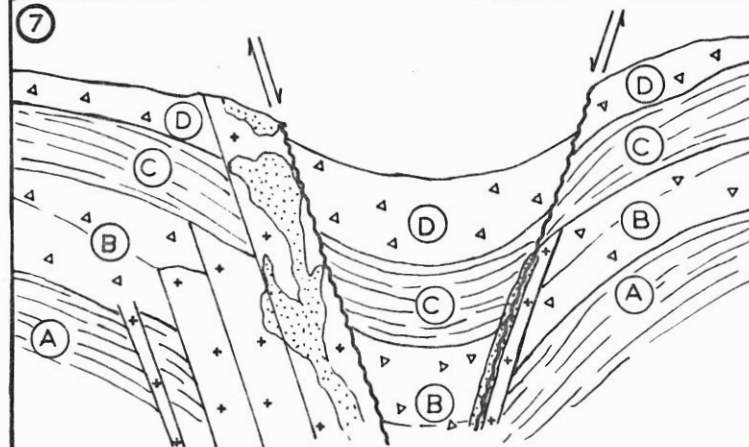
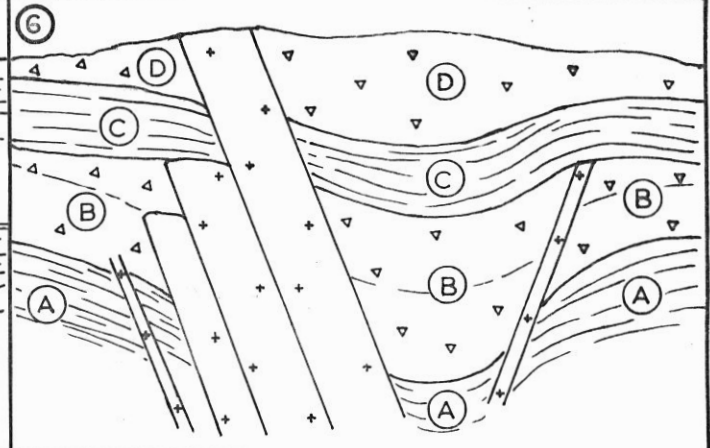
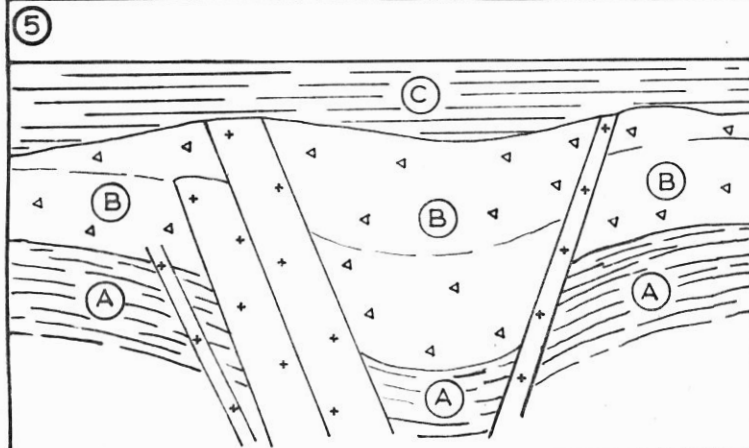
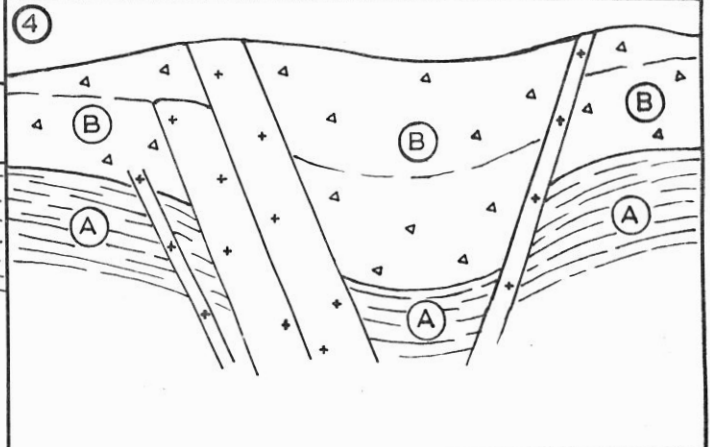
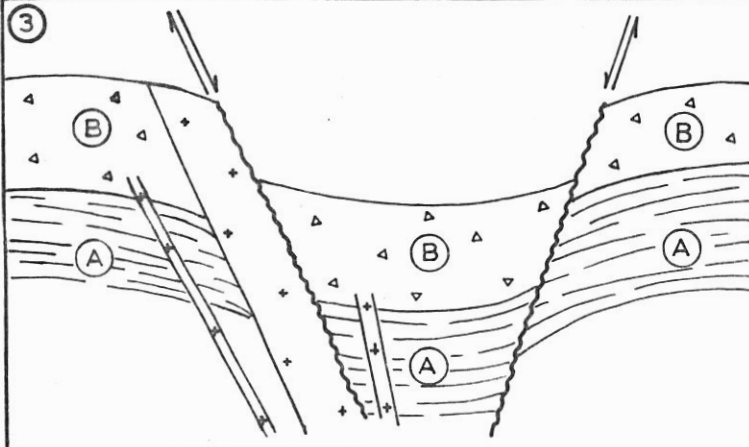
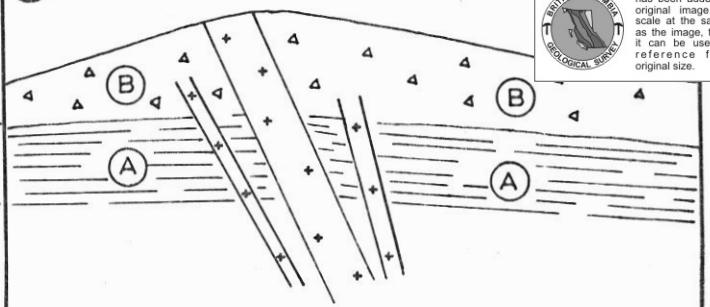
① GENERALIZED X-SECTIONS



LEGEND

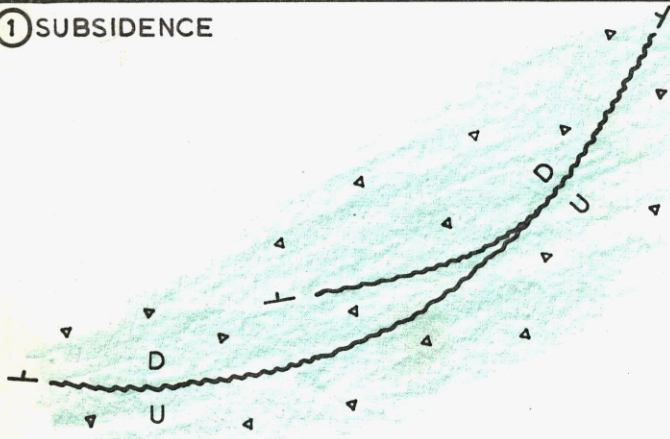
- black shale
- pyroclastics
- intrusives
- mineralization

②

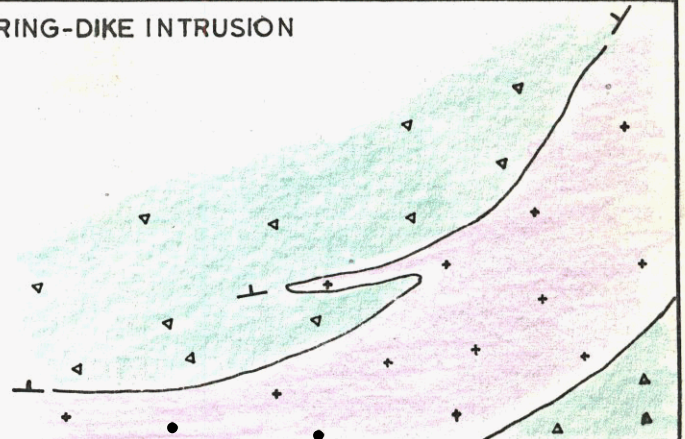


evolution of ore deposits - upper kitsault valley PLAN

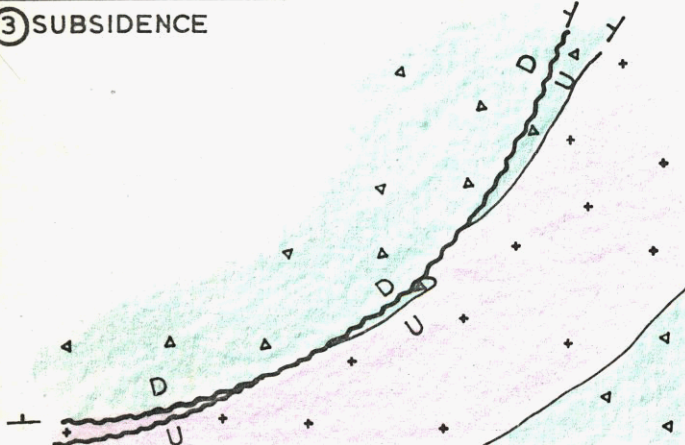
① SUBSIDENCE



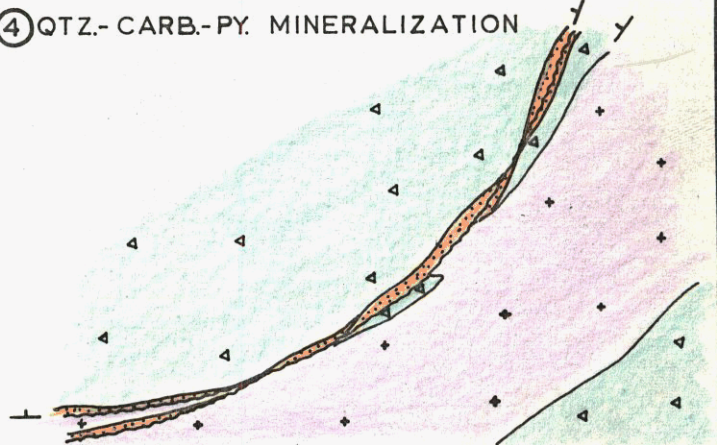
② RING-DIKE INTRUSION



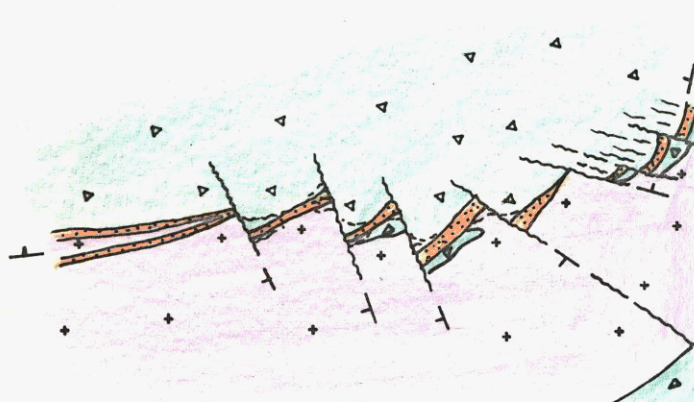
③ SUBSIDENCE



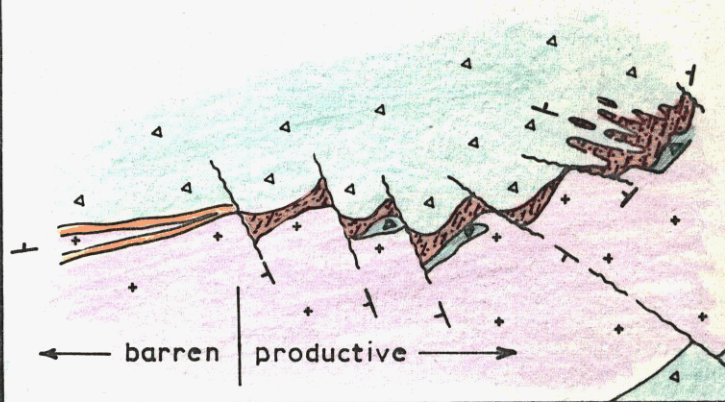
④ QTZ.-CARB.-PY. MINERALIZATION



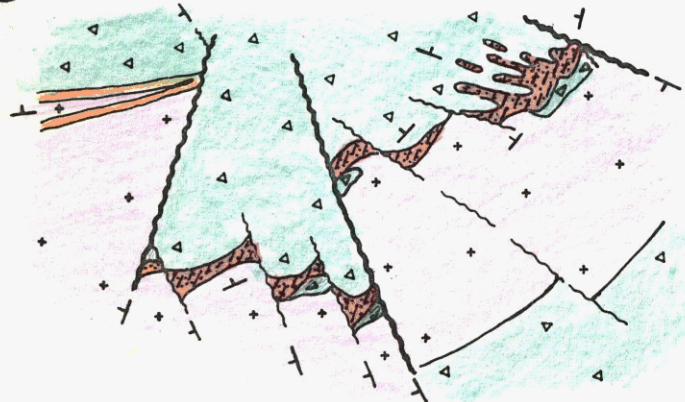
⑤ X-FAULTING & BRECCIATION






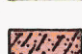

⑥ Ag-Pb-Zn MINERALIZATION

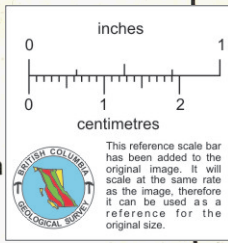


⑦ POST-ORE FAULTING



LEGEND

-  pyroclastics
-  intrusives
-  qtz.-carb.-py. mineralization
-  Ag-Pb-Zn mineralization
-  faulting & brecciation



M. A. Mitchell

May 10, 1973