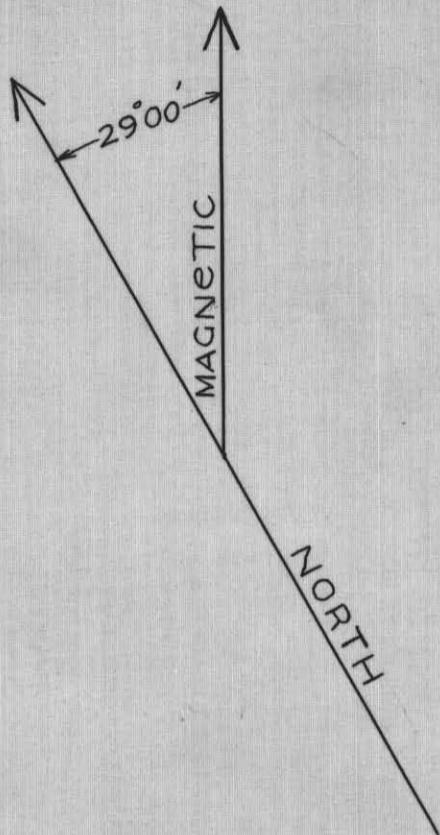


Quartz stringers
some pyrite

Sloughed 12-144.5 El.

Sloughed 11-146.7 El.

10-136.0 El. 9-130.0 El.



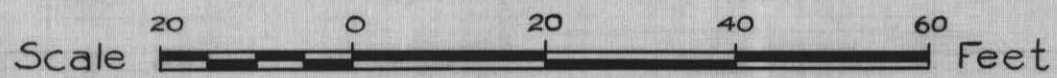
LEGEND

- Carbonate tuff
- Lamprophyre dyke
- Quartz
- Open-cut
- Stripping
- Adit
- Strike & Dip

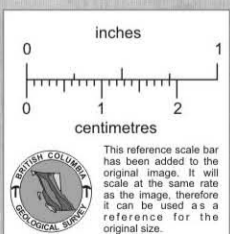
Description	Width	Oz. Au.	Oz. Ag.	% Cu	% Pb.	% Zn.	% Silica
Chip sample across vein	23 in.	0.56	1.5	Tr.			82.4
Sample of gouge	7 in.	0.02	Tr.				
Sample of quartz & pyrite	16 in.	1.60	3.2	Tr.	Tr.	Nil	72.4
Selected sample of pyrite		4.50	8.1	Tr.	Nil	Nil	15.0

103I/9W

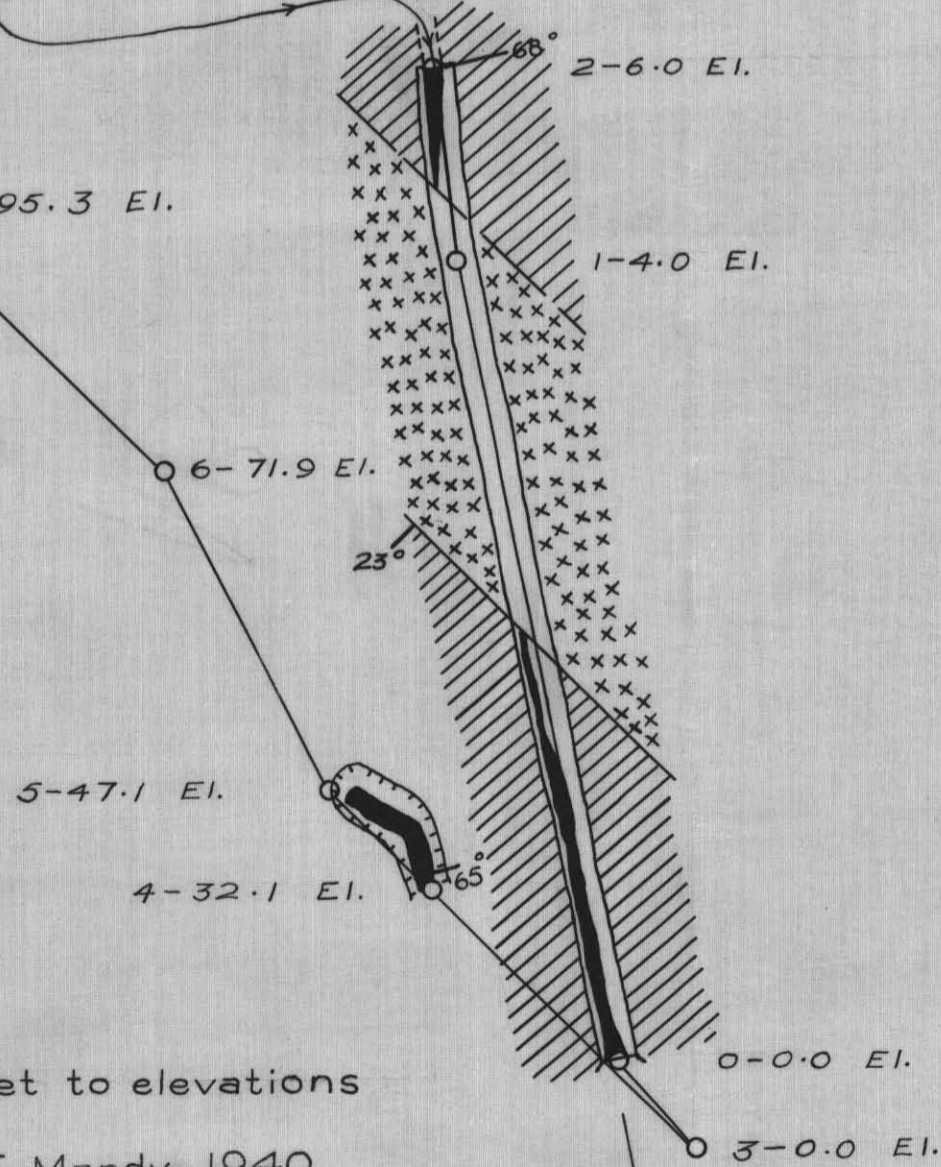
Pace and Compass Traverse
WORKINGS GEM NO. 1 M.C.
 Black Bull Group, Kleanza Mt.
 Copper River
 Omineca Mining Division



NOTE: For altitude above sea-level add 2250 feet to elevations



by Joseph T. Mandy, 1940
 Mining Engineer, Prince Rupert, B.C.



300' to Hagen's cabin, El. -150'