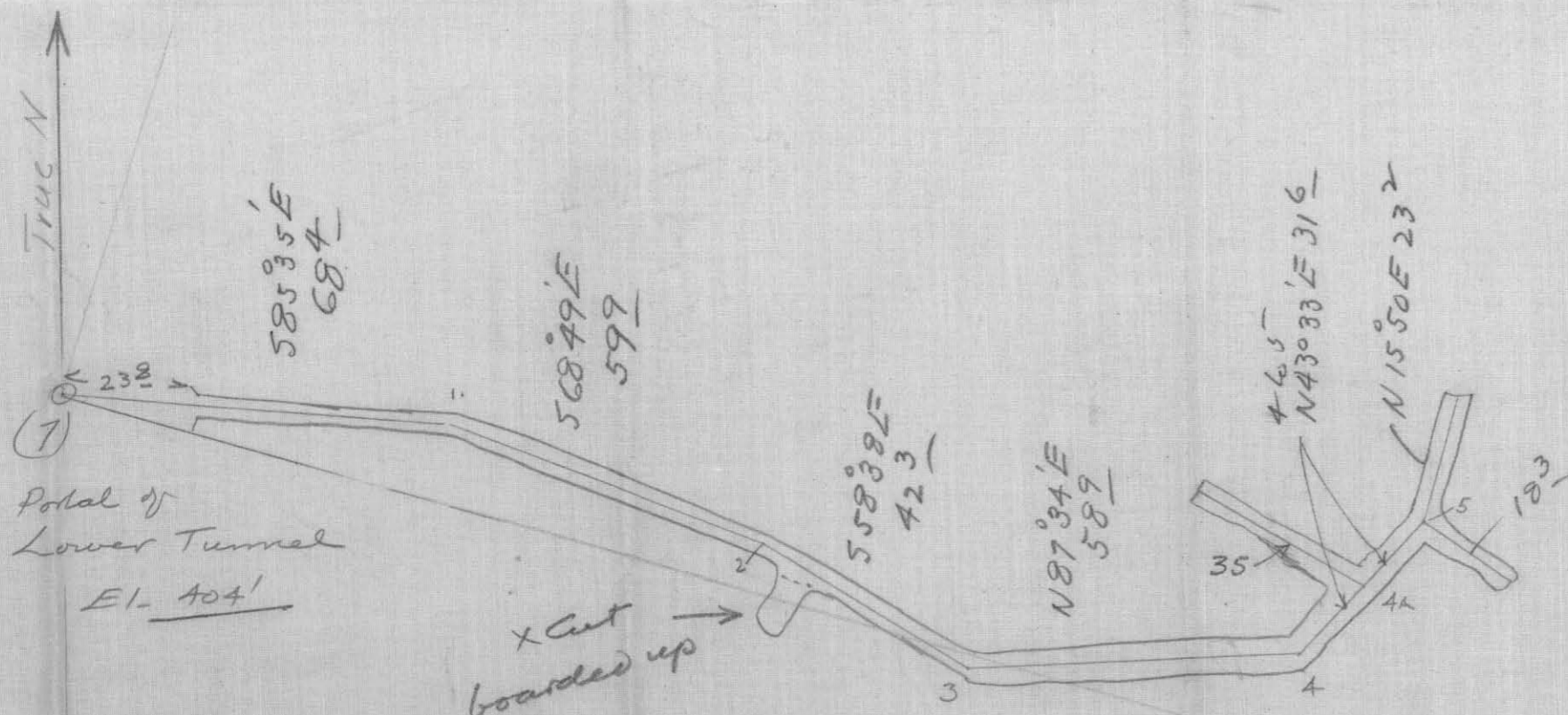


This reference scale bar has been added to the original image. It will scale at the same rate as the image, therefore it can be used as a reference for the original size.



X Cut boarded up

LOWER T.

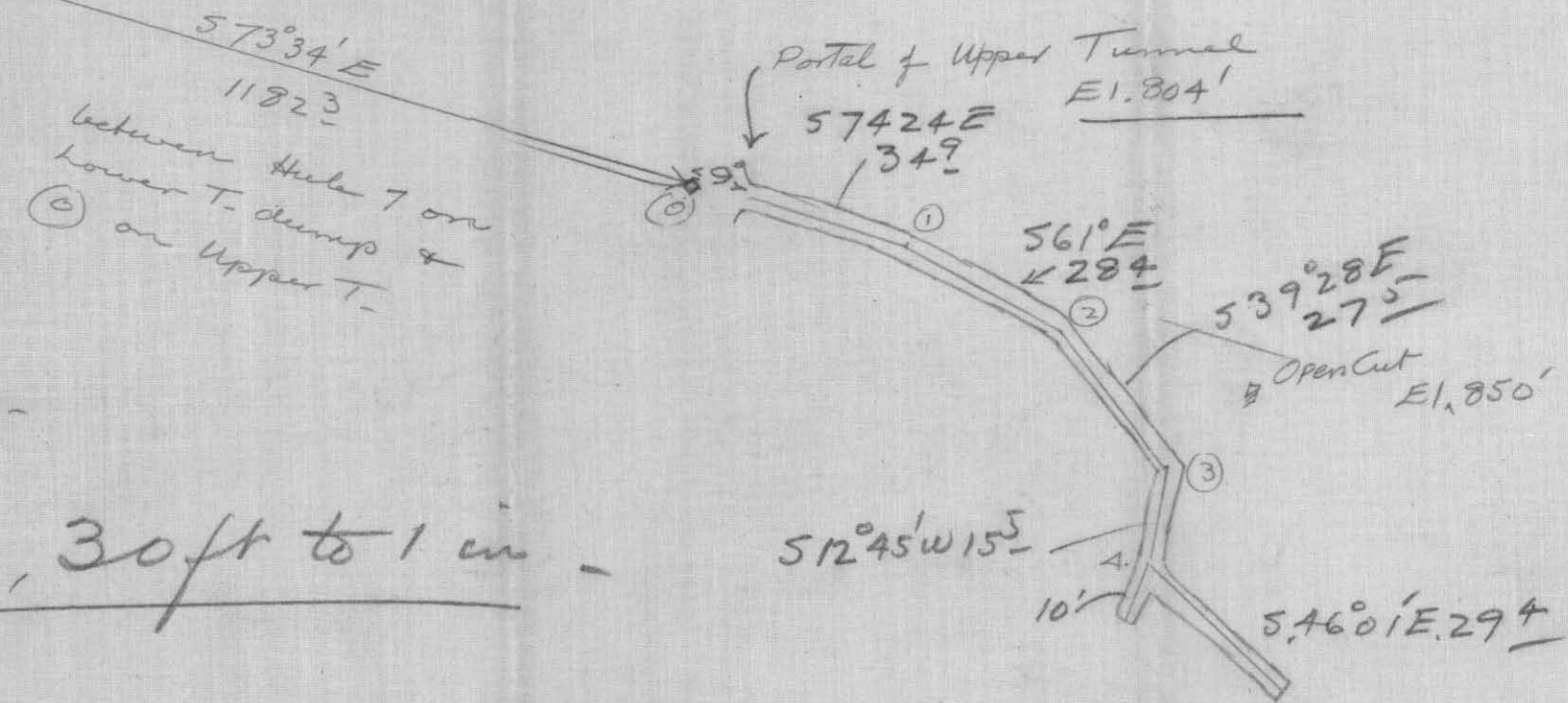
Dear M^r Lang -
 Hope this sketch
 will fill the requirements
 only had a few minutes
 to catch the Train
 Fred Nash.

103I/9w
 103I-74

Also some new work
 done in a new vein
 at or near SE Cor
 of Emma M.C. can
 be reached from
 upper Tunnel
 S 10° E may
 600 ft.
 F.N.

EMMA TUNNELS.

Scale, 30 ft to 1 in.



018058