

CIM Dist 6 Oct 86

Tel Deposit

Banks Id

Joe Shiner

Dep @ S end of Island

o Surf Pt

similar deposits Surf Pt + Surf Inlet

BANKS

Granitic rx with sed inliers (metased bands)

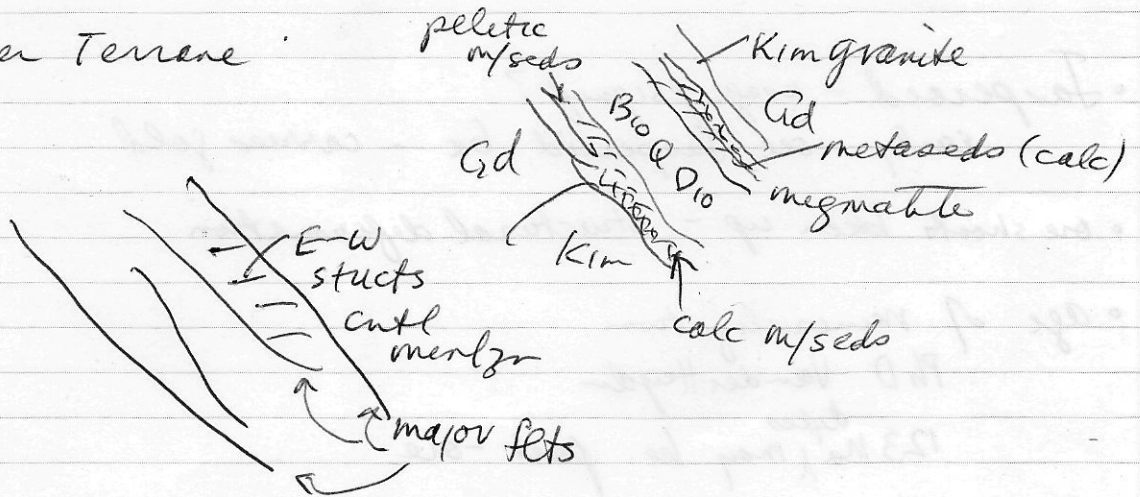
Current Reserves

o Surf Inlet

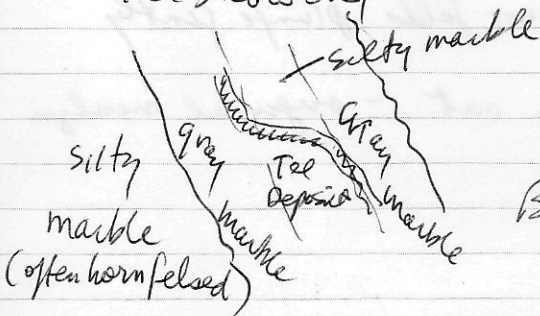
212 000 Tons @ 0.86oz (cutoff .25)

Island has felsic intrusive core

Alexander Terrane



Tel Showers



Dykes 123Ma

Banded Gray Marble folded

Then dykes isoclinally folded locally
silty marble - self cycis pulled apart

Altn marble dolomitized

ore py sphal gtz

ore repeated by folding??

local fold / fault stacking



Correspondence/Notes Folds all post ore?

on boundaries of
some Gold, arsenopyrite, sphal, py - most w. pyrite

Sulphides show cataclastic textures
several stages of veining

Digem survey - lots of E/M conductors (graphitic zones)

Skarn mainly in marble along Ken granite
pyrrhotite gold

• Jasperoid - usage/signif?

early - see Jasperoid bx - carries gold

• ore shoots blown up - structural deformation

• age of mineralization

PhD VenderHeyden

123 Ma ^{dykes} may be post-ore

• any consistency to fold pattern? some minor folds plunge gently

but defun has prob. sheared them out - original mineral
in folds?