

FIG. 1

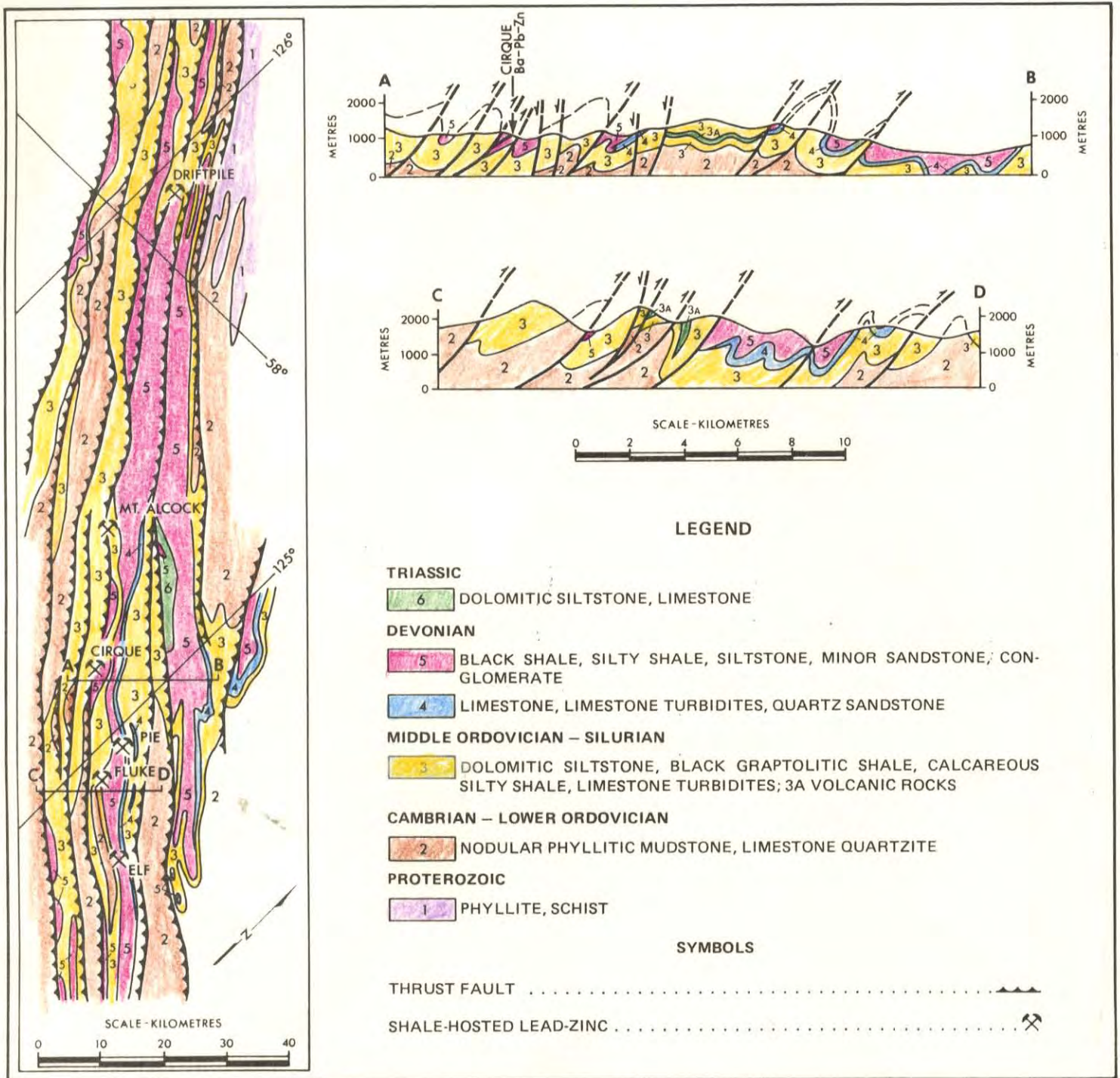
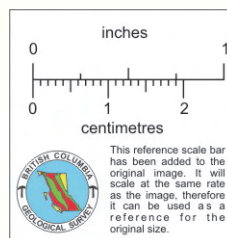
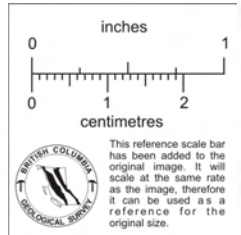
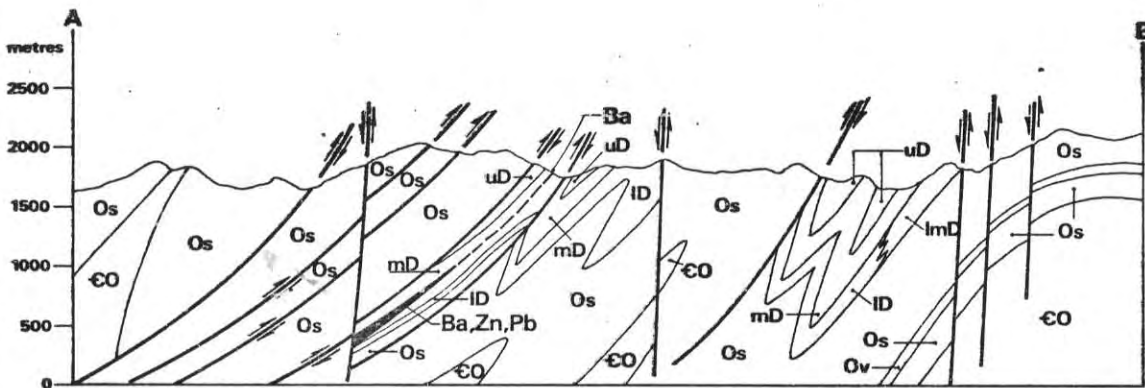
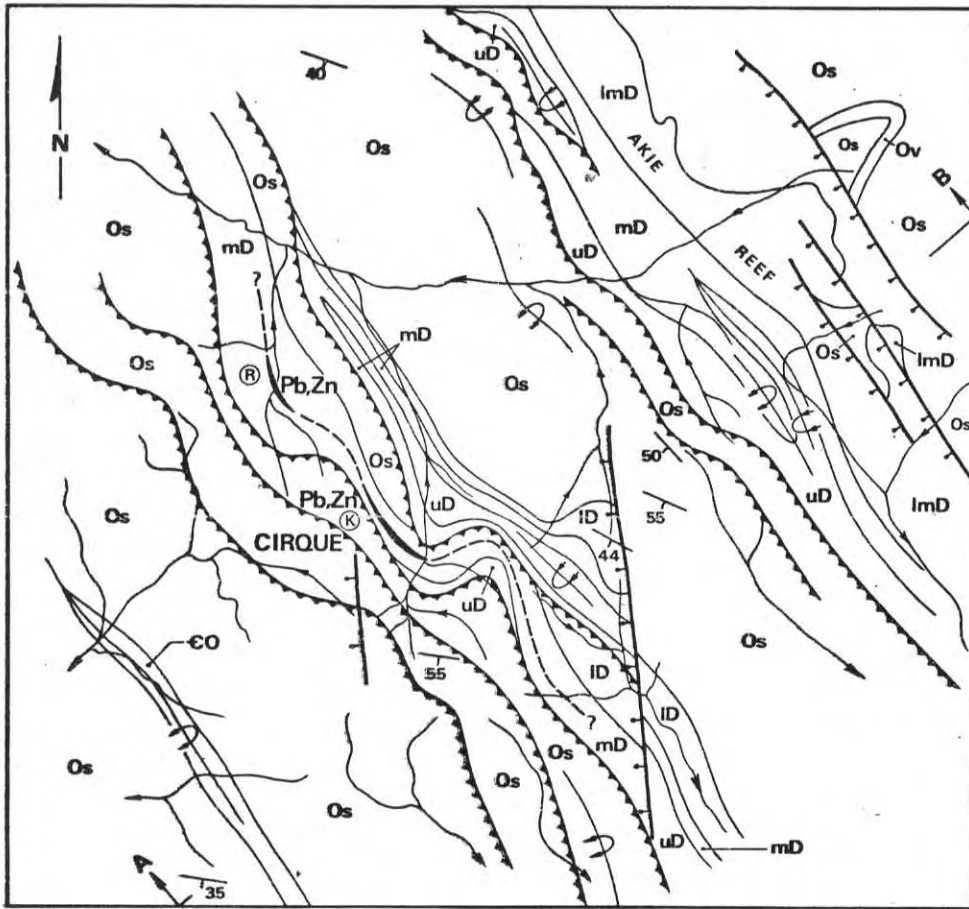


Figure 3 – General Geology of the Driftpile Creek–Akies River District





LEGEND

UPPER DEVONIAN

uD BLACK SHALE, SILTY SHALE, MINOR LIMESTONE

MIDDLE DEVONIAN

mD SILICEOUS SHALE, CHERT, MINOR SILTSTONE, BARITE, PYRITE

LOWER/MIDDLE DEVONIAN

ImD BIOCLASTIC LIMESTONE (AKIE REEF)

LOWER DEVONIAN

ID SILTY SHALE, SILTSTONE, MINOR LIMESTONE

ORDOVICIAN/SILURIAN

OS DOLOMITIC SILTSTONE, BLACK SHALE, SILTY SHALE, MINOR LIMESTONE, CHERT; VOLCANIC ROCKS (Ov)

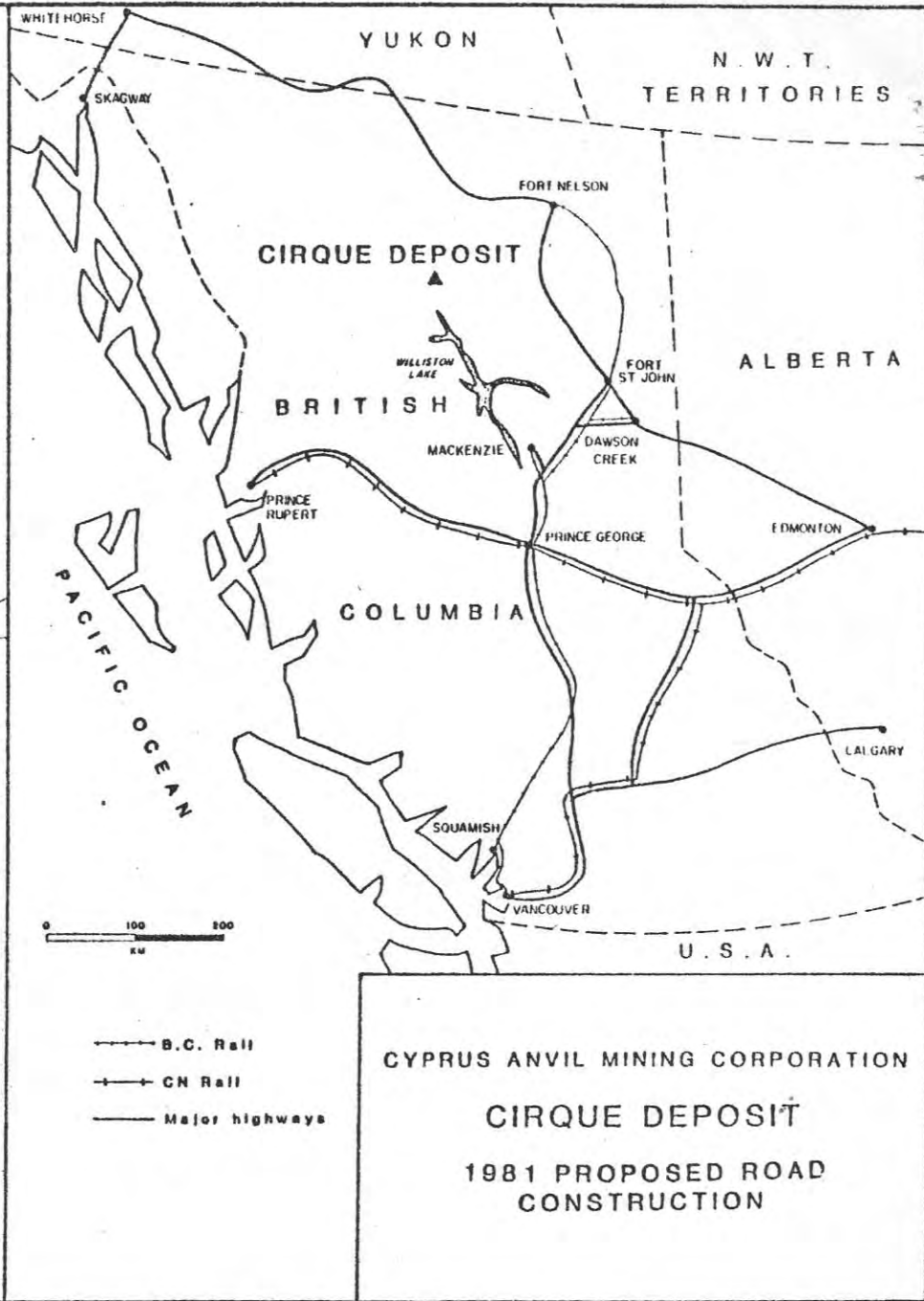
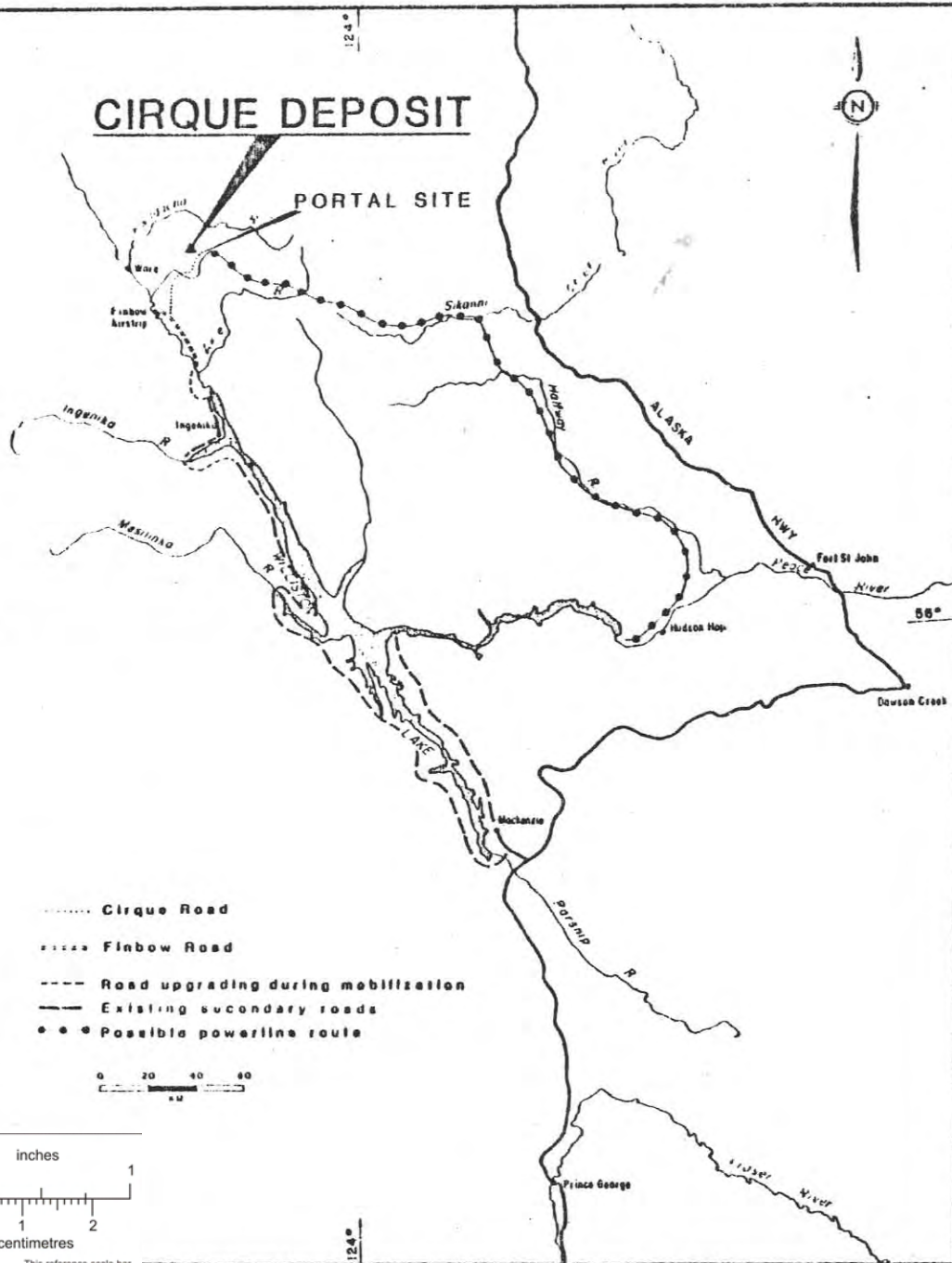
CAMBRIAN/ORDOVICIAN

CO PHYLLITIC, NODULAR MUDSTONE, SILTSTONE, LIMESTONE

SYMBOLS

NODULAR BARITE
 BEDDED BARITE, MASSIVE PYRITE
 OVERTURNED ANTICLINE

OVERTURNED SYNCLINE
 BEDDING
 FAULT: NORMAL; THRUST



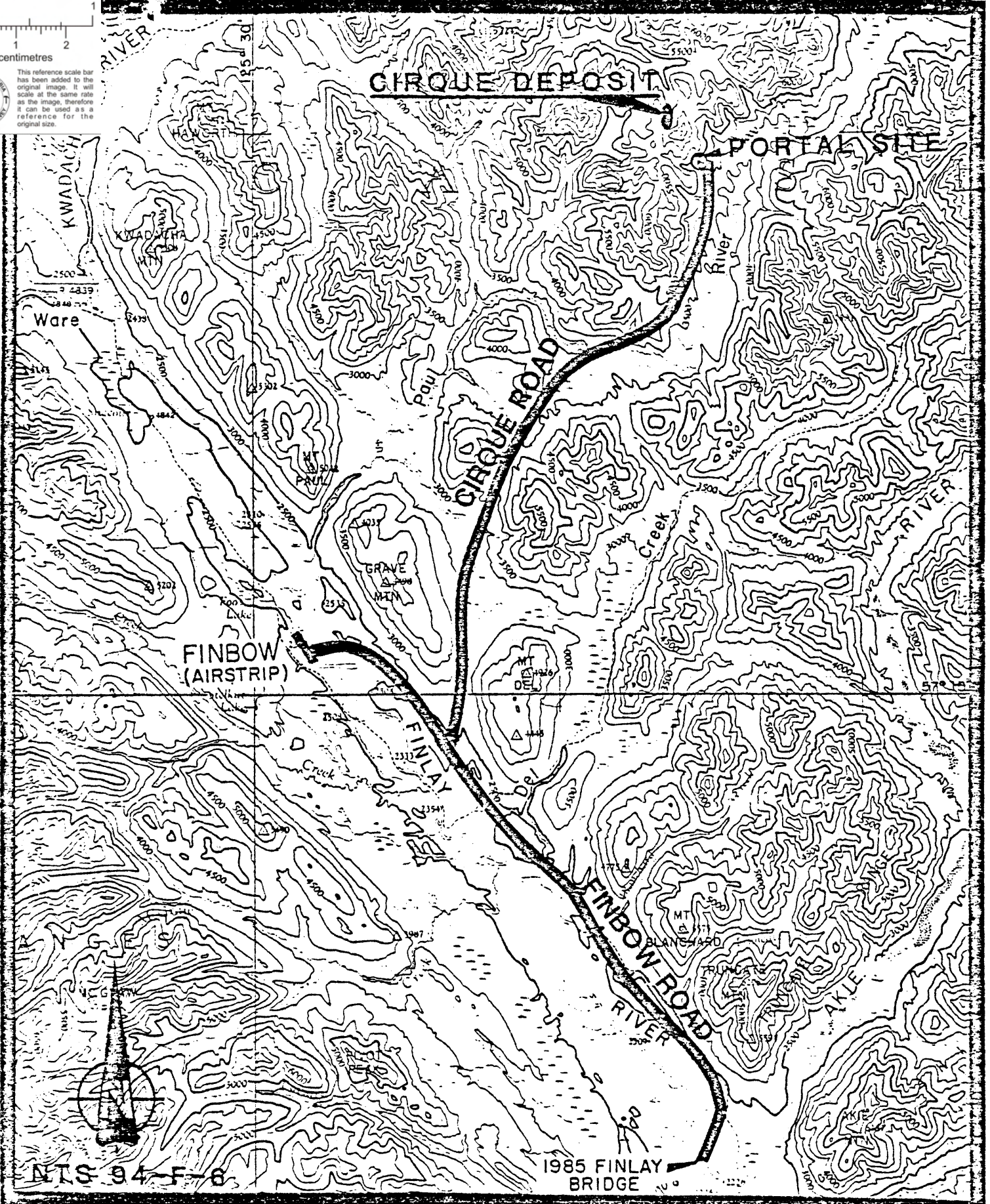
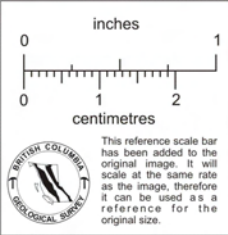
CYPRUS ANVIL MINING CORPORATION

CIRQUE DEPOSIT

1981 PROPOSED ROAD CONSTRUCTION

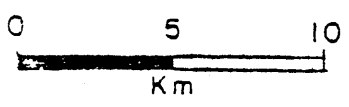


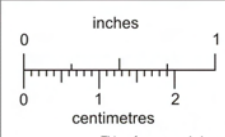
This reference scale bar has been added to the original image. It will scale at the same rate as the image, therefore it can be used as a reference for the original size.



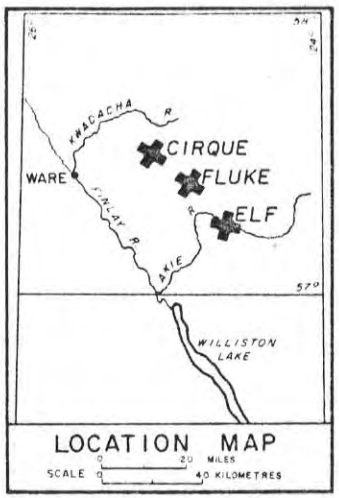
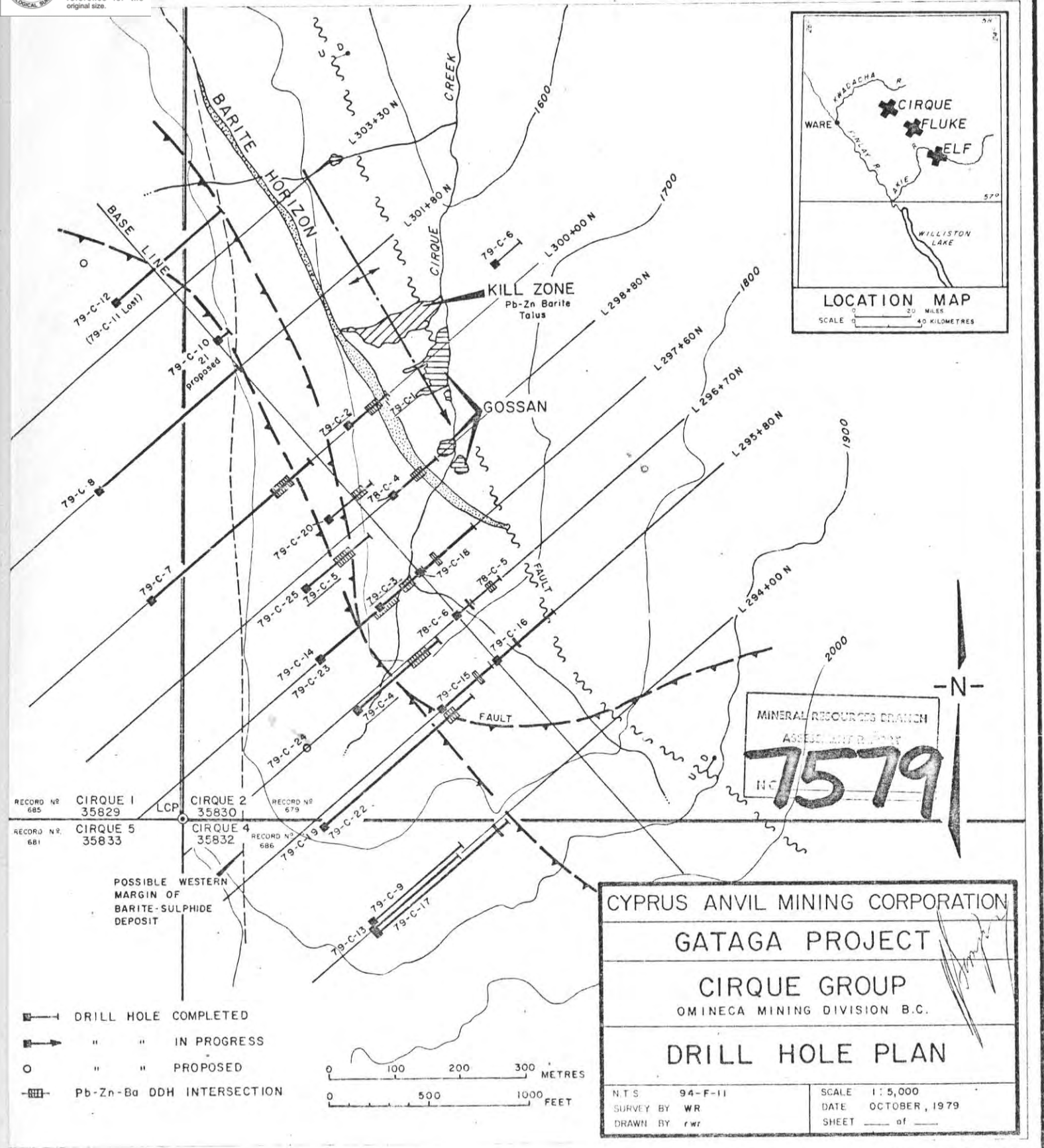
NTS 94-F-6

CYPRUS ANVIL MINING CORPORATION
CIRQUE DEPOSIT
PROPOSED ACCESS CORRIDORS





This reference scale bar has been added to the original image. It will scale at the same rate as the image, therefore it can be used as a reference for the original size.



MINERAL RESOURCES BRANCH
ASSESSMENT DIVISION
7579
NO

CYPRUS ANVIL MINING CORPORATION
GATAGA PROJECT
CIRQUE GROUP
OMINECA MINING DIVISION B.C.

DRILL HOLE PLAN

N.T.S.	94-F-11	SCALE	1:5,000
SURVEY BY	WR	DATE	OCTOBER, 1979
DRAWN BY	rwr	SHEET	___ of ___

- DRILL HOLE COMPLETED
- ➔ " " IN PROGRESS
- " " PROPOSED
- ▨ Pb-Zn-Ba DDH INTERSECTION

