

**PRIME GEOCHEMICAL METHODS LTD.**

Dramatic changes in the methodology of exploration geochemistry have occurred in recent years. A strong competitive advantage is available to those exploration and mine development companies which make a strategic investment in geochemical expertise. Advantages to your program include:

- reduced overall costs.
- enhanced data presentation and interpretation.
- higher confidence in exploration target selection.
- effective "audits" of your sampling and analytical methods.
- efficient follow-up recommendations.
- specializing in Cu-Au alkalic porphyries (Mount Milligan type). See example from Cat Mountain project, Lysander Gold Corporation (below).
- reinterpreted B.C. Regional Geochemical Surveys in Atlas Format now available.

To maximize returns on your investment in geochemical surveys (or on chemical analysis), funds must be well spent. This does not just happen! **Prime Geochemical Methods Ltd.** is in business to service your needs in an efficient and cost-effective manner. For your multi-element plotting requirements contact **Cambria Data Services Ltd.** (see the accompanying advertisement).

**Stan Hoffman, Ph.D.**  
Consulting Geochemist

**Prime Geochemical Methods Ltd.**  
630 - 1199 West Pender St.  
Vancouver, B.C., Canada V6E 2R1  
Telephone (604) 684-0069  
Message (604) 731-8892  
FAX (604) 682-7354

**CAMBRIA DATA SERVICES LTD.****MULTI-ELEMENT GEOCHEMISTRY****Data Processing - Map Plotting**

In conjunction with **Prime Geochemical Methods Ltd.**, we offer services for the processing of your multi-element data. Our in-house computer systems are optimized for the rapid turnaround of large volumes of data. Enhanced data presentation allows all analytical results to be viewed in map form, ensuring a cost-effective and confident interpretation.

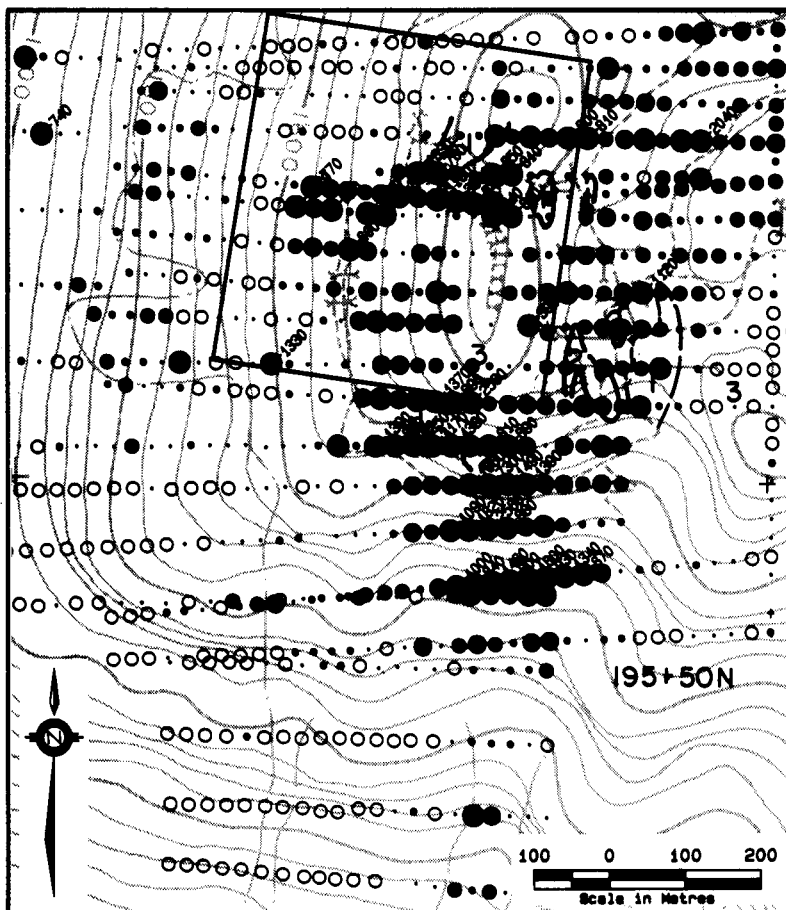
- Forward your sample location map upon completion of the sampling program. Your basemaps are ready for immediate plotting upon completion of the analysis.
- Interpretation and geochemical consulting are available from Dr. Stan Hoffman.
- If your processing requirements are large, talk to us about computer software sales and training.

**Cambria Data Services Ltd.** also markets and supports software for database, computer-aided map drafting and diamond drill logging applications.

Contact:

**Paul J. McGuigan**, Consulting Geologist  
**Michael Pond**, Geologist-Programmer  
**Bob Sandu**, Programmer

**Cambria Data Services Ltd.**  
630 - 1199 West Pender St.  
Vancouver, B.C., Canada V6E 2K1  
Telephone (604) 682-5313  
FAX (604) 682-7354



**LG** **LYSANDER GOLD CORPORATION**  
VSE SYMBOL: LYS 604-681-8069

**CAT MOUNTAIN PROPERTY**

OSLINKA RIVER, BC

GOLD (ppb) IN SOILS

BET CLAIM (SHOWN) - 100% LYSANDER  
CAT CLAIMS - BP RESOURCES/LYSANDER

**GEOCHEMICAL LEGEND**

- > 600
- >400 TO 600
- >200 TO 400
- >100 TO 200
- >40 TO 100
- >15 TO 40
- 0 TO 15

**GEOLOGICAL LEGEND**

- INTRUSIONS
1. monzodiorite
  2. syenite
- VOLCANIC ROCKS
3. augite porphyry
- trench

For further information contact:

Mr Don Mustard 926-2144

MAP PREPARED BY CAMBRIA DATA SERVICES LTD