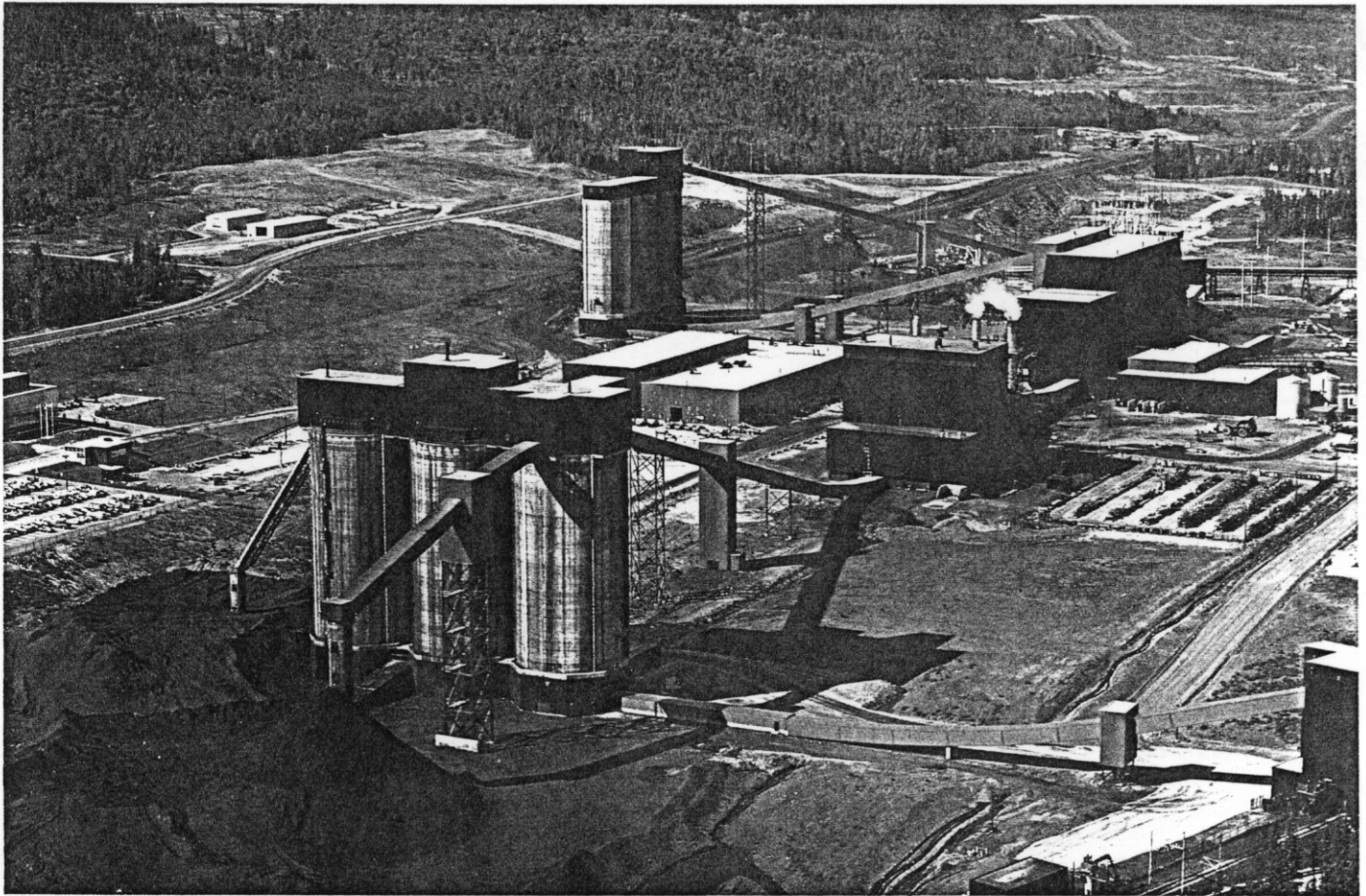


~~093E 010, 011~~
093P 019, 020

016511



Wash plant at the Quintette coal mine, with coal storage silos in foreground.

The Quintette Mine is an open pit coal mine located in north-eastern British Columbia and near the Bullmoose mine. It was constructed as part of the northeast B.C. coal project which included construction of Bullmoose, the town of Tumbler Ridge, a port and railway system, and utilizes Tumbler Ridge as a service centre.

Teck became the Manager of Quintette on July 14, 1991, and an owner following completion of financial restructuring in April, 1992.

Quintette is a large mine in terms of both coal produced and tonnage mined. A production fleet of twenty large excavators and seventy 170-190 tonne haul trucks allow Quintette to produce roughly 4.3 million tonnes of clean coal while mining 120,000,000 tonnes of total material.

Quintette is a unique operation. It mines highly faulted and deformed coal formations from three distinct pits. The raw coal from the main mining area is transported to the processing plant by a 13 kilometre long conveyor system. Once processed the coal is transported by rail to the port at Prince Rupert and then shipped to a consortium of Japanese steel companies under long-term contracts.

Capital cost, \$	1,100,000,000
Annual capacity (tonnes clean coal)	4,500,000
Wash plant capacity (tonnes clean coal/day)	13,000
Wash plant yield, %	51
Construction start	May, 1982
Construction completion	August, 1983
Teck equity, %	33.3
Number of employees	1,120