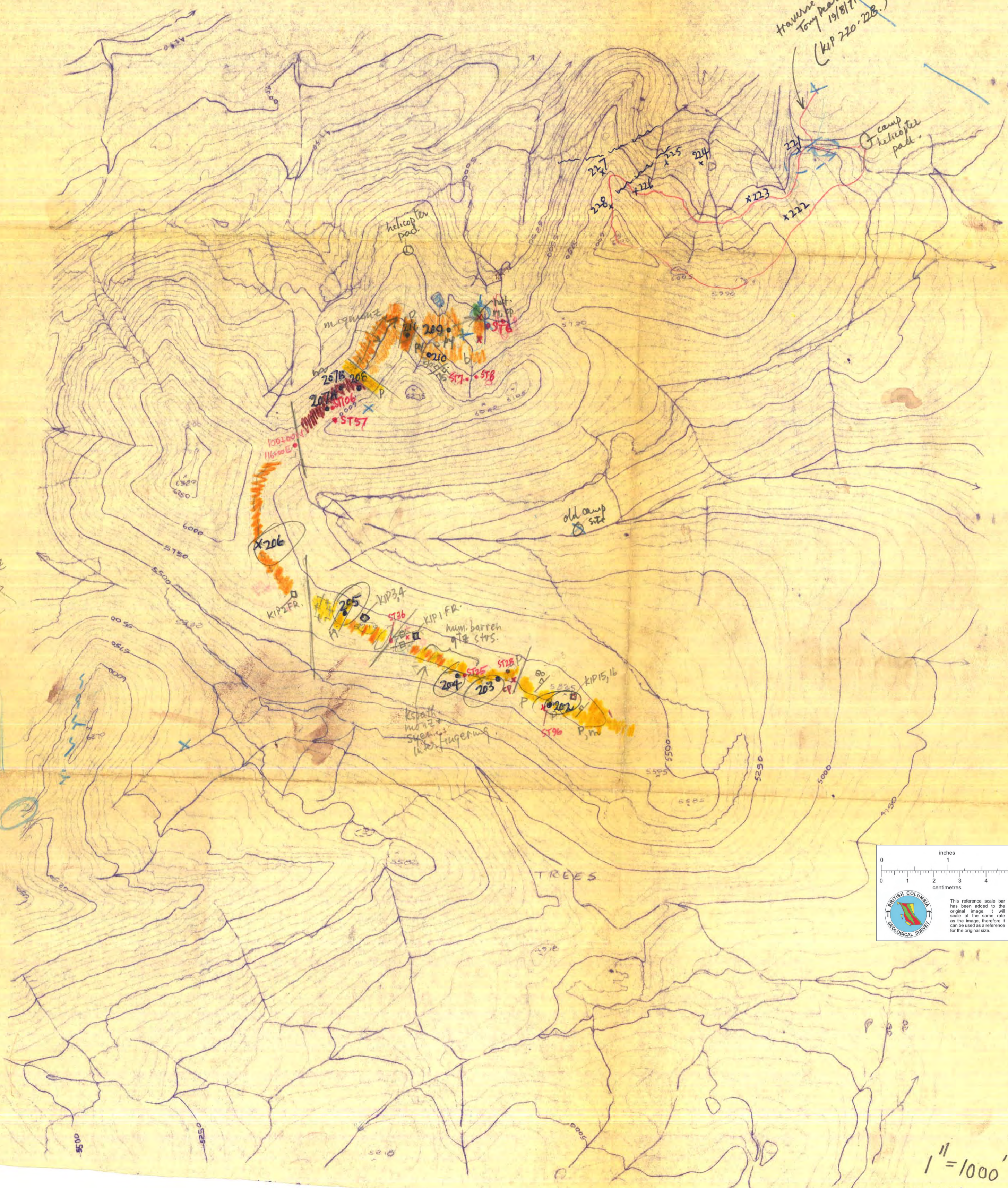


# KIP CLAIMS - NORANDA.

Traverse w/  
Tom Pearce  
19/8/71  
(KIP 220-228.)



1 inch = 1000 feet  
1 centimetre = 100 metres

This reference scale bar has been added to the original image. It will scale at the same rate as the image, therefore it can be used as a reference for the original size.

1" = 1000'  
016324