

LAUREL LABORATORIES LTD

JULY 31, 1942  
CERTIFICATE No. 7837

PIONEER GOLD MINES LTD  
VAN COUVER - B.C.

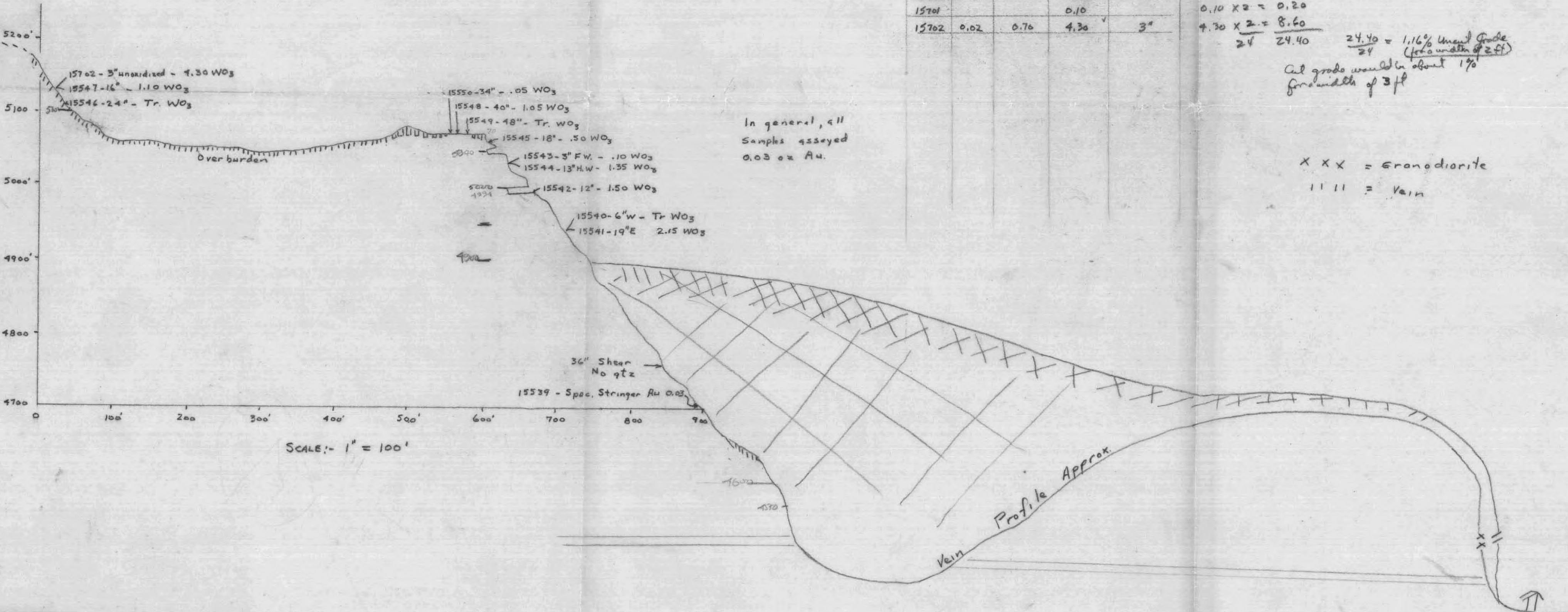
SAMPLE No.	OZ	GOLD VALUE	% WO <sub>3</sub>	WIDTH
15539	0.03	# 1.05	-	SPAC.
15540			TR	6" W
15541			2.15	19" E
15542			1.50	12"
15543			0.10	3" FW
15544			1.35	13" HW
15545			0.50	18"
15546			TR	24"
15547			1.10	16"
15548	0.04	1.40	1.05	40"
15549	0.03	1.05	TR	48"
15550	0.04	1.40	0.05	50"
15701			0.10	
15702	0.02	0.70	4.30	3"

= 0.00  
2.15 x 2 = 4.30  
1.50 x 2 = 3.00  
0.10 x 2 = 0.20  
1.35 x 2 = 2.70  
0.50 x 2 = 1.00  
TR x 2 = 0.00  
1.10 x 2 = 2.20  
1.05 x 2 = 2.10  
TR x 2 = 0.00  
0.05 x 2 = 0.10  
0.10 x 2 = 0.20  
4.30 x 2 = 8.60  
24 24.40

$\frac{24.40}{24} = 1.16\%$  Unoxidized Grade  
(for a width of 2 ft)  
Ox grade would be about 1%  
for a width of 3 ft

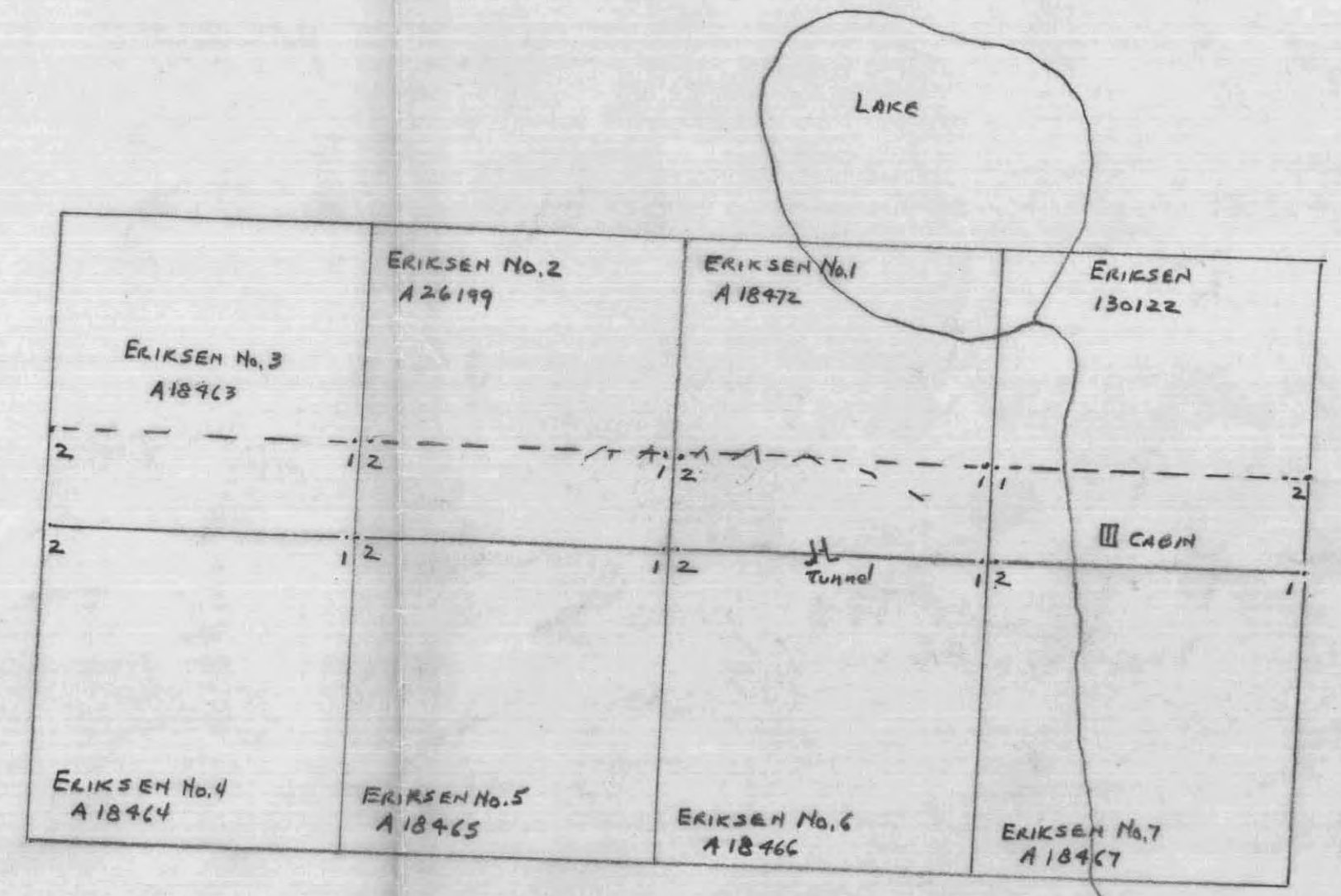
XXX = Granodiorite  
||| = Vein

Copy of Sketch by F. Joubin  
N30W Section  
BLACK PRINCE

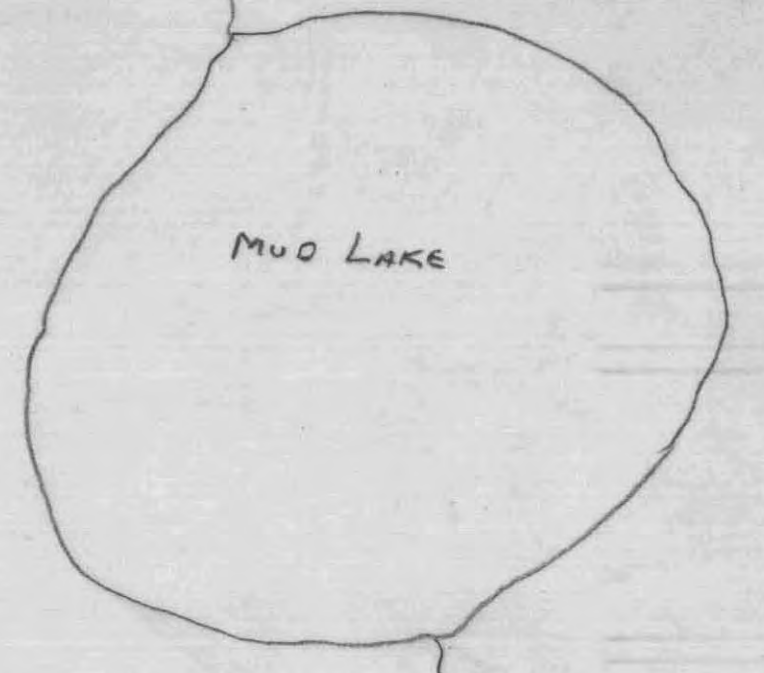


In general, all  
Samples assayed  
0.03 oz Au.

SCALE: - 1" = 100'



BLACK PRINCE GROUP  
ROCHER DE BOULE MT.  
HAZELTON - DIST.  
TR - 6/20/31 by Mung.



Sketch for Mung file  
7/1/31