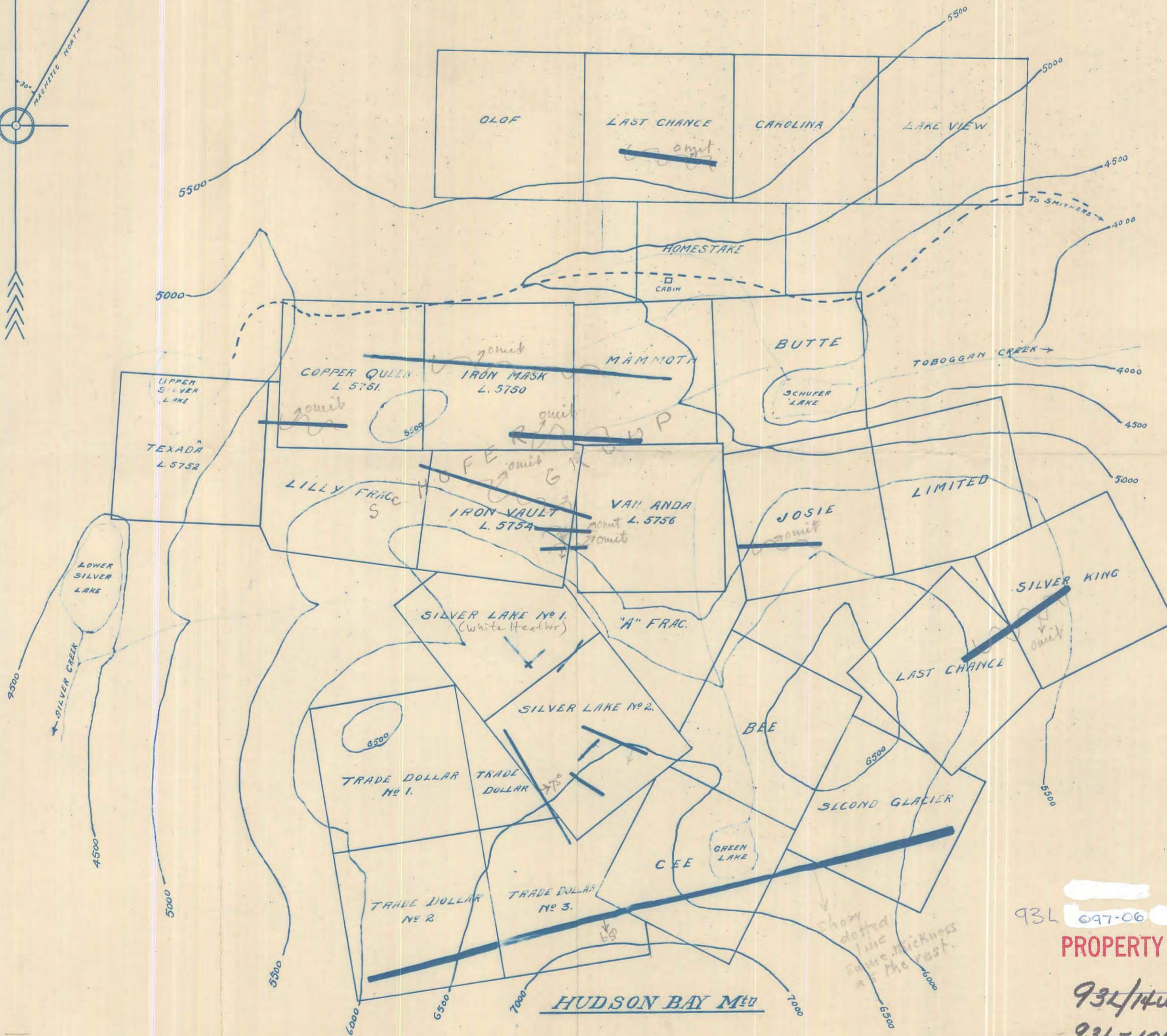
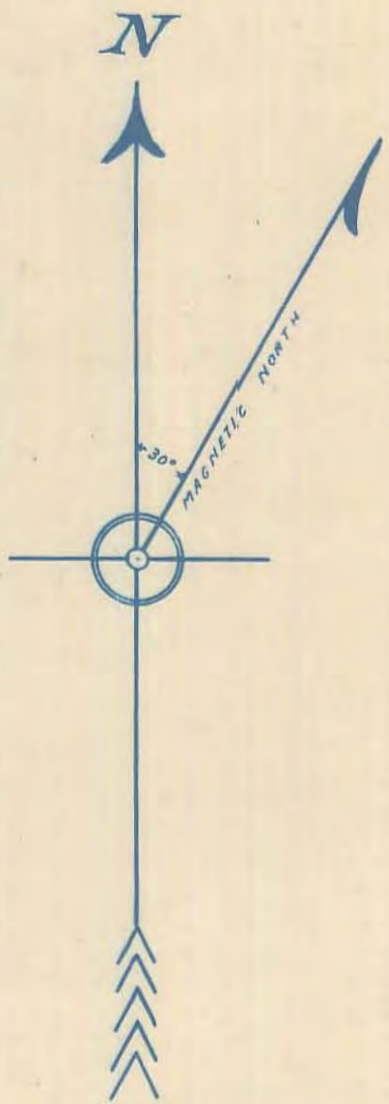


**SKETCH OF
SILVER LAKE SECTION HUDSON BAY MOUNTAIN**

SCALE 1 IN. = 780 FT.

Probable strike of MINERALIZED VEINS SHOWN THUS ON TRADE DOLLAR & SILVER LAKE GROUPS (veins on other properties not shown) show dotted line



D. Lay 1928.

