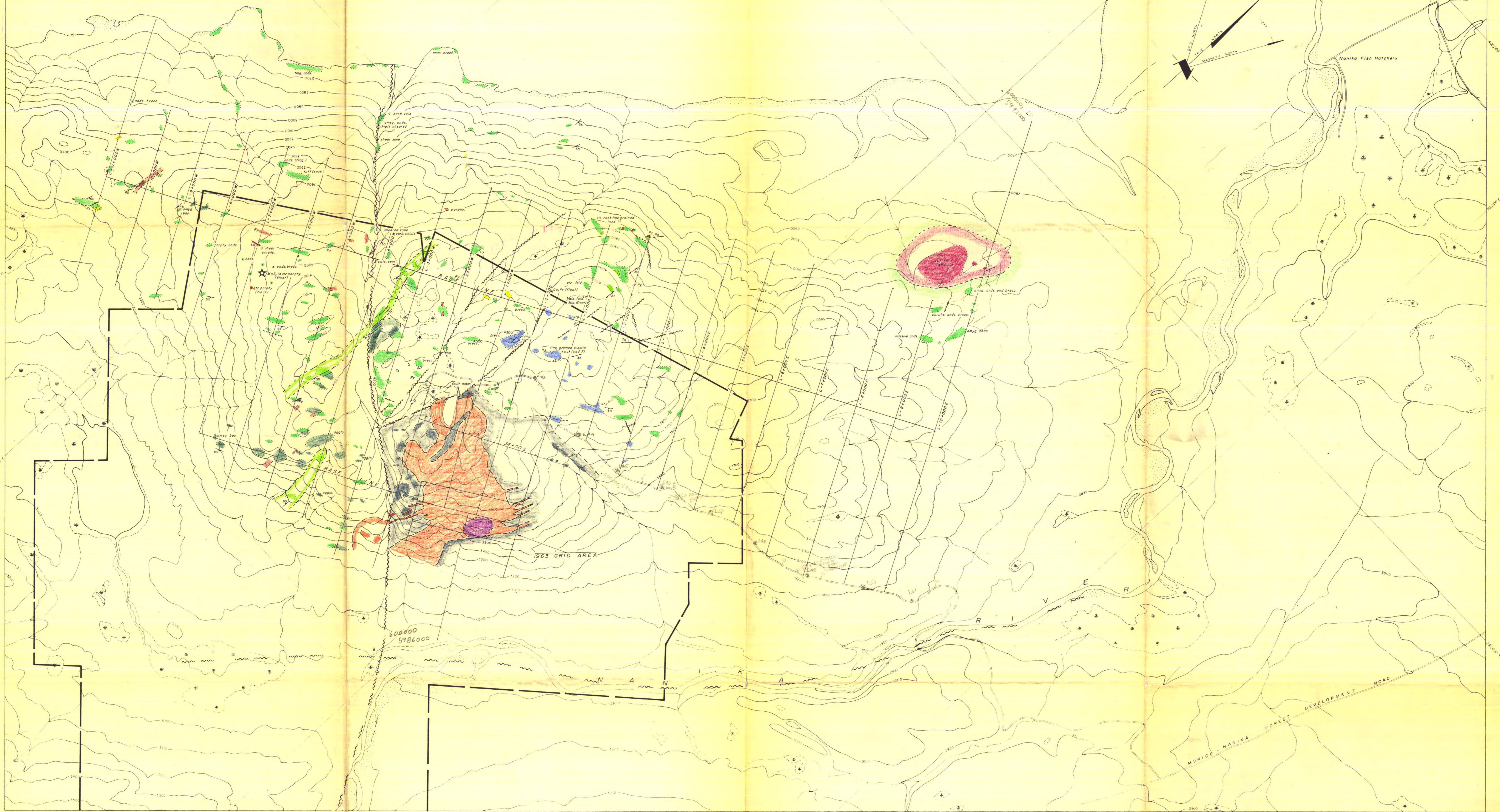


M O R I C E L A K E



LEGEND

INTRUSIVE ROCKS

- Quartz Porphyry (Lucky Ship Pluton).
- Quartz Diorite.
- Crowded Porphyry.
- Felsite, Aplite.

HAZELTON GROUP LOWER JURASSIC TO LOWER CRETACEOUS

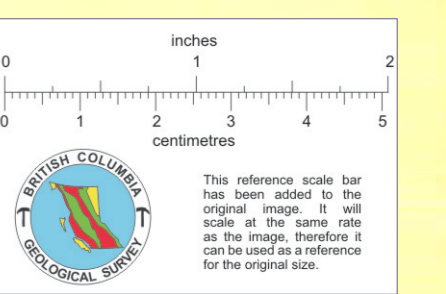
- Andesite Flows, and related Tuffs and Breccias.
- Basalt (amygdaloidal, scoriaeous).
- Agglomeratic "red beds".
- Tuffs (light grey - fine grained could be Clastic Sedimentary Rocks).
- Sedimentary Rocks (Argillites, Greywackes and Conglomerates).

SYMBOLS

- Geological contact (defined, approximate, assumed).
- Bedding attitude.
- Foliation.
- Fault (defined, assumed).
- West showing.
- Approximate property boundary.
- Lucky ship access road.
- Cliff (fault scarp?).
- Outcrop.
- Swamp (swamp boundary).
- Intermittent stream.

ABBREVIATIONS

- | | | | |
|--------|--------------|------------------|-----------------------|
| agg. | agglomerate | fels. | felsitic |
| amyg. | amygdaloidal | frag. | fragmental |
| and. | andesite | porph. | porphyry, porphyritic |
| arg. | argillite | qtz. | quartz |
| bas. | basalt | sed. | sedimentary |
| brecc. | breccia | sil. | siliceous |
| calc. | calcite | cu. | copper |
| carb. | carbonate | fe. | iron |
| cong. | conglomerate | py. | pyrite |
| feld. | feldspar | MoS ₂ | molybdenite |



SOUTHWEST POTASH CORPORATION

LUCKY SHIP PROJECT
OMINECA M.D. — B.C.

MORICE LAKE RECONNAISSANCE GEOLOGICAL MAP

SCALE 1" = 1000'

To accompany report "LUCKY SHIP MoS₂ PROPERTY" by: T. J. R. Godfrey.

Vancouver