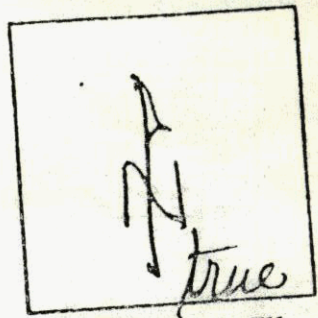
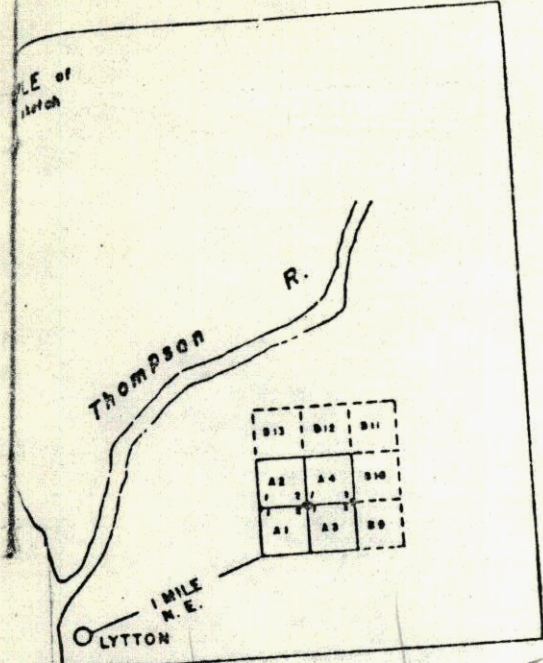
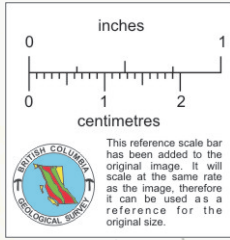


93K/3E 93K013

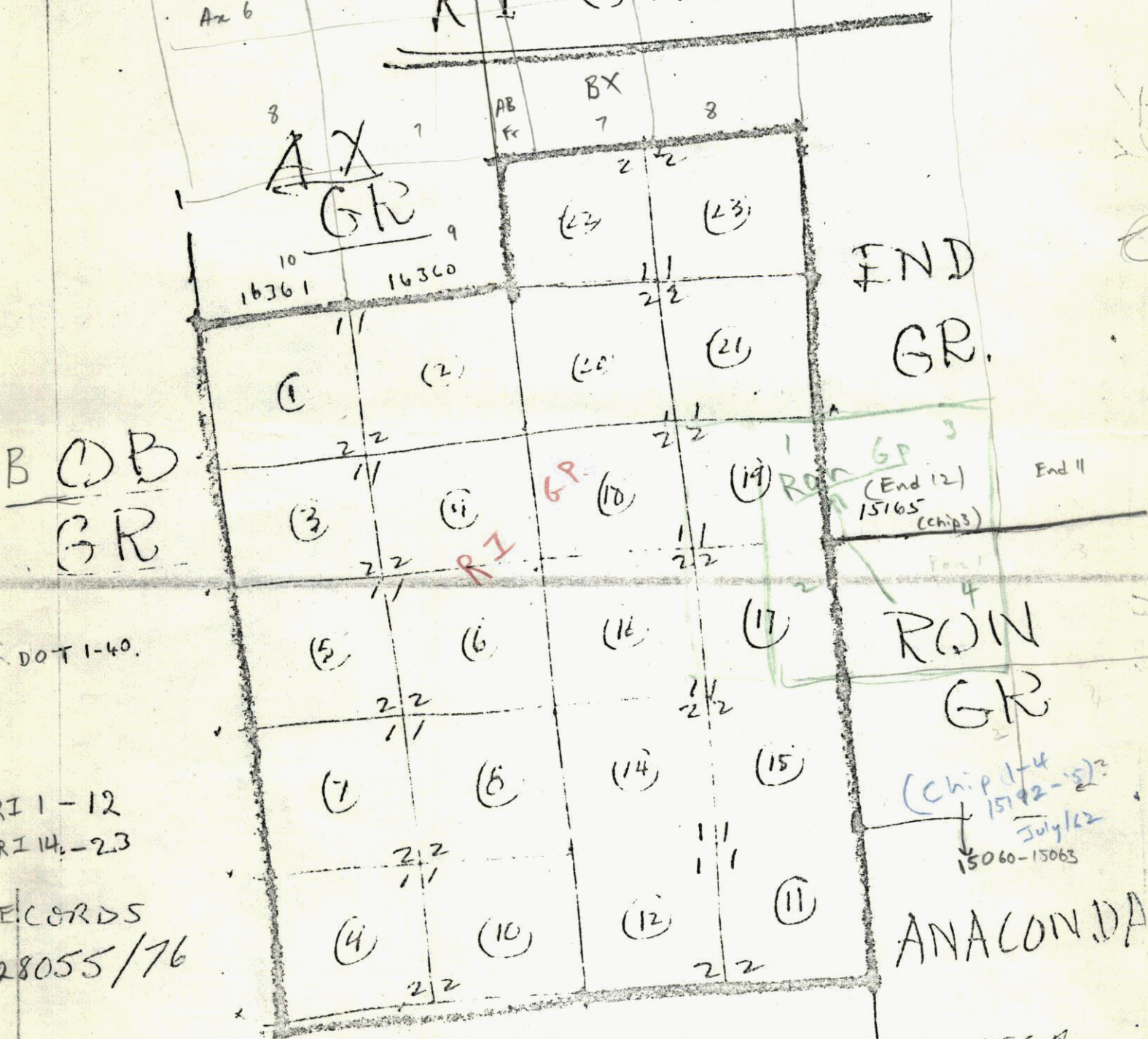
Claims must be tied by direction and distance to at least one, preferably more than one, topographical feature, or to a land lot, section, township, or other recognizable point on printed maps of the district. Relationship of previously located claims should also be shown.
N.B. — The sketch for a group of claims may be placed on one affidavit.



INDICATE NORTH
(True or Magnetic)



Bx 5 6
RI GROUP



B O B
GR

DOT 1-40.

RI 1-12
RI 14-23

RECORDS
28055/76

END
GR.

ROW GR
(End 12)
15165
(chips)

ROW
GR

(Chip 1-4)
15192-15194
July/62
15060-15065

ANACONDA

1" = 1500' APPROX.

MAP 21B.

OMINECA
NO 28055-76
MAP 21B
31/I/65
WA

19/2/65

015226