

015019

93H 136

August 26, 1993

To: Danny Hora

From: John Nebocat

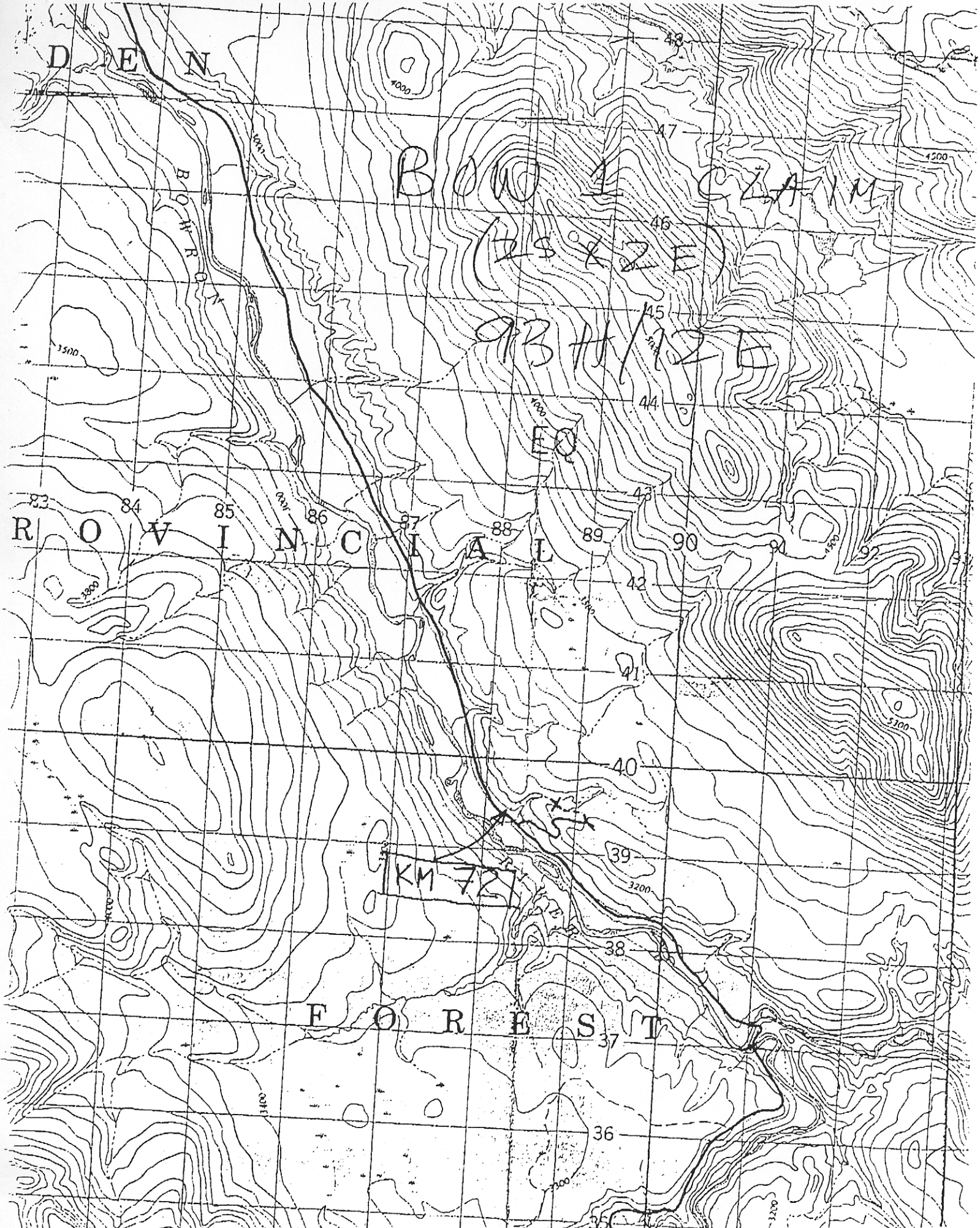
pages: 6

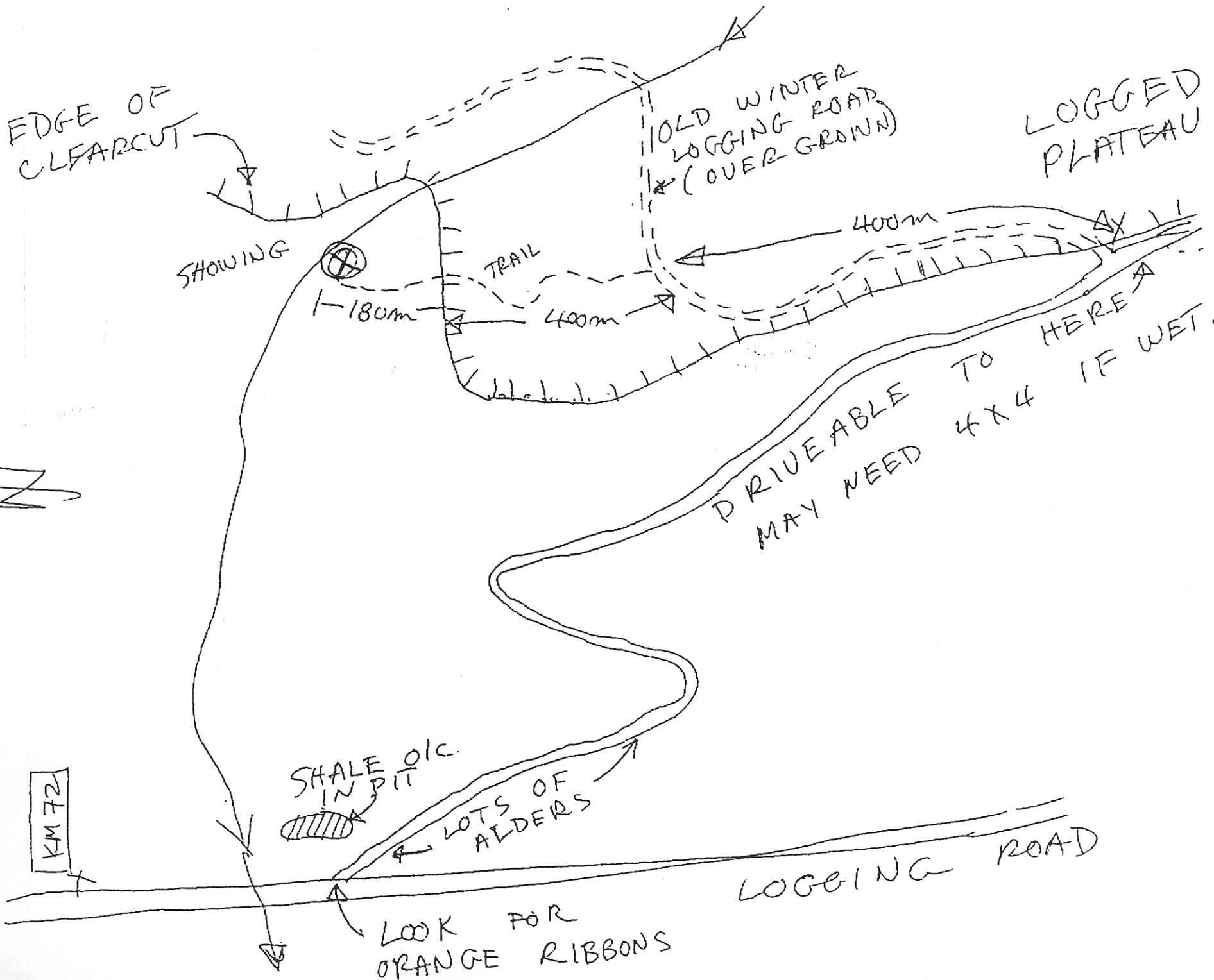
Enclosed please copies of sketch maps and assays from the BOW 1 mineral claim located on NTS 93H/12E.

Access to the property is via the Yellowhead Highway, east to the Bowron River Bridge. Just east of the bridge is a logging road on the right side of the highway. Turn here and then turn left at the intersection to head south. This road goes for about 20 km to an intersection with another logging road; the km marker on this road, at or near the intersection, is 42 if I remember correctly. Drive south on this road to the 72 km marker; just past it is a small creek and an old winter logging road on your left. Look for several orange ribbons as the lower part of the road is overgrown with alders. This road is okay to drive; I cleaned it up last month and it may be accessible in 2 W.D. Take it to the break-in-slope at the edge of the clearcut logging. An old winter road hooks up with it on the left side but can't be driven now. I cut out a trail but it is easy to follow. Take it for about 400 m. to where it is open and crests on a ridge. A foot/bike path was cut out and flagged from the road north to the edge of the clearcut, a distance also of about 400 m. The trail follows the ridge crest on the SW side of the creek for about 180 metres to the showing.

Alternately, The main logging road crosses Highway 16 about 5 km east of Purden Lake; this is about the same length as from the bridge, but shaves off about 8 km of gravel road.

FOUND ON THE BASIS OF RGS ✓
===== ○



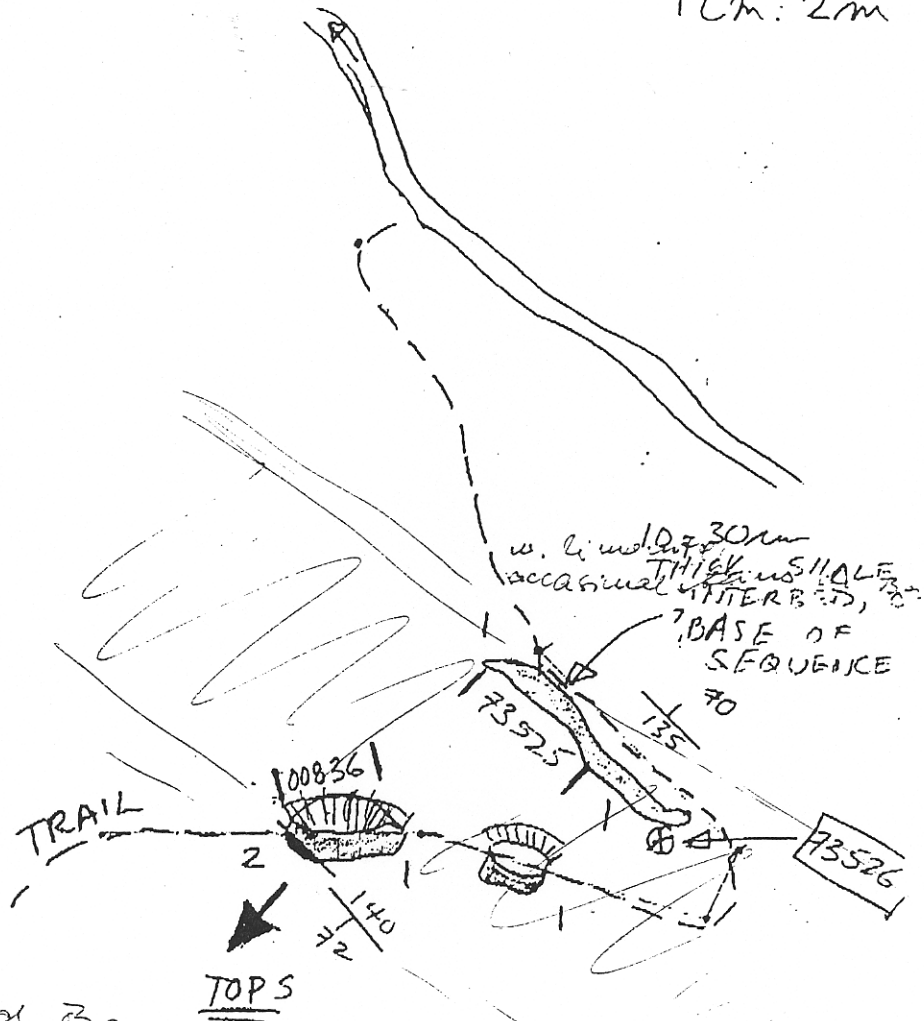




1cm: 2m

1 BEDDED BARITE

2 SHALE



~ 5m very bedded Ba

Dust 30cm band some Ba also

20cm rusty & black w. graphite - occasional
5 x 25cm Ba lens

15cm black sandy band

? graphitic shale w. rusty streaks