

This reference scale bar has been added to the original image. It will scale at the same rate as the image, therefore it can be used as a reference for the original size.

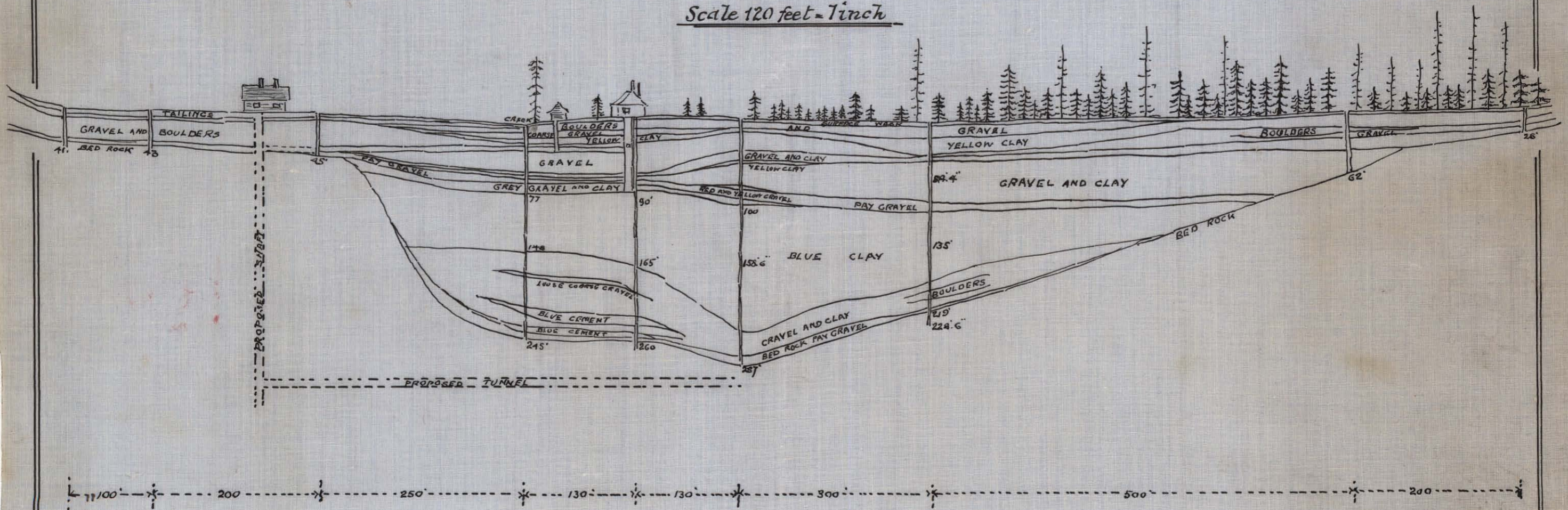
# THE INCORPORATED EXPLORATION CO. OF BRITISH COLUMBIA LTD.

## GEOLOGICAL CROSS SECTION OF SLOUGH CREEK VALLEY, AT THE MOUTH OF NELSON CREEK.

PROPERTY FILE  
93H105-06

SHOWING PROSPECT SHAFTS DRILLED  
BY  
HYDRAULIC JETTING MACHINES

Scale 120 feet = 1 inch



014982