

Ryan Jones' copy

014973

PF 93H 095

Upper Lightning
Creek

Slough Creek

A SUMMARY REPORT

PROPERTY ACQUISITIONS

AND

PHASE I DRILLING PROGRAM

IN THE WELLS AREA, B.C.

FOR

ISL RESOURCES LTD.
SUITE 1088
999 WEST HASTINGS STREET
VANCOUVER, B.C. V6C 2W2

BY

RYAN JONES

JANUARY 1989

PROPERTY FILE

LOG NO:	89 07 31 T 4
ACTION:	<i>Ron Paul has copy → Property File</i>
FILE NO:	<i>Confidential?</i>

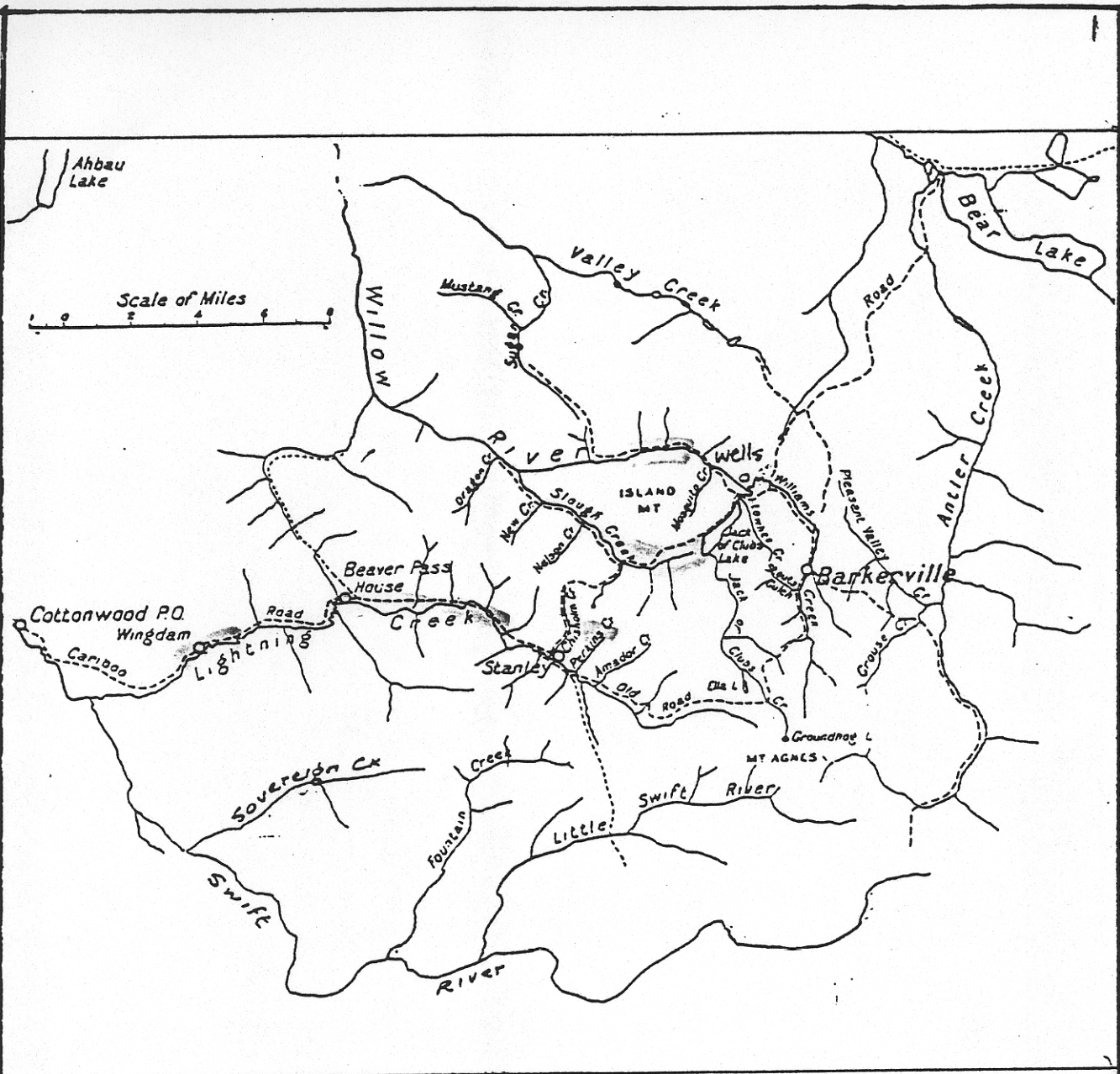
PROPERTY FILE

TOP SECRET

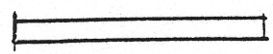
→ MGE

TABLE OF CONTENTS

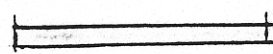
	<u>Page Number</u>
GENERAL AREA PROPERTY MAP	1
INVENTORY OF MINING PROPERTIES AND RELATED DETAILS	2
THE PROPERTIES	
Lightning Creek and Tributaries	5
Slough Creek	7
Swift River and Tributaries	9
The Meadows (William Creek and Willow River)	11
Sovereign Creek	13
PHASE I DRILLING PROGRAM	15
GENERAL	
Equipment	15
Sampling Method	20
Notes Concerning Drill Hole SC1/SL1	24
FIGURES	
1 General area property map	1
2 Property Map - Lightning Creek & Tributaries	6
3 Property Map - Slough Creek	8
4 Property Map - Swift River	10
5 Property Map - The Meadows (Williams Creek & Willow River)	12
6 Property Map - Sovereign Creek	14
7 Seismic Line - Location of Seismic Lines on Upper Lightning Creek	16
8 Seismic Line - Stanley Mine	17
9 Seismic Line - Slough Creek	18
10 Wildcat Hole - The Meadows	30
TABLES	
1 Drill hole designation	22
2 Drill log SC1/SL1	23
3 Drill log LC1/SL2	25
4 Drill log LC1/SL5	26
5 Drill log LC2/SL5	27
6 Drill log LC3/SL5	28
7 Drill log M1	29



LEASES HELD BY I S L



LEASES UNDER NEGOTIATION



A3H

I S L RESOURCES LTD
 VANCOUVER, CANADA.
 GENERAL AREA PROPERTY MAP

**INVENTORY OF MINING PROPERTIES
AND RELATED DETAILS.**

Item	Lease No. & Expiry	Creek Name	Creek Bed Length (m)	Lease Area (h)	Owner Name & Address	Terms
1.	PL9627 27/4/91	Slough	600	26	Summit Lime Coleman, Alta.	3 year option. 5% NSR \$50,000 max.
2.	PML6396 31/7/90	Lightning	500	25	T.G. Crawford Quesnel, B.C.	Working lease @ \$1,500 per month May - Sept.
3.	PML6161 31/7/90	Lightning	1,000	50	"	thence \$3,000 per month three year term.
4.	PML6728 31/7/90	Lightning	1,000	50	"	"
5.	PML6830 31/7/90	Last Chance	1,000	50	"	"
6.	PL381 31/7/90	Ah Quay	1,000	50	"	"
7.	PL68 31/7/90	Chisholm	400	20	"	"
8.	PML434	Lightning	80	50	"	"
9.	PL15059	Lightning	1,000	34	R. Jones for ISL Resources Ltd.	Outright purchase from J. Bot for \$7,500.00.
10.	PLi5258 24/02/89	Lightning	1,000	50	"	"
11.	PL11734	Lightning	1,000	50	"	"

12.	PL21633 31/10/89	Williams	870	43	"	Staked for ISL Resources Ltd.
13.	PL12104	Williams	250	41	M.A. Hinson Barrier, B.C.	2 year option purchased for \$1,500 plus 5% max. \$50,000 /lease.
14.	PL9416	Williams	250	50	"	"
15.	PL21149 23/11/88	Williams	750	30	P. McNair	"
16.	PL20554 25/03/89	Willow River	650	44	"	"
17.	PL3209 10/07/89	Swift River	1,000	50	Tremblay Gold Mining Ltd. North Van. B.C.	3 year option, \$50,000 max. per lease.
18.	PL3210 10/07/89	Swift River	1,000	50	"	"
19.	PL3211 10/07/89	Swift River	1,000	50	"	"
20.	PL3212 10/07/89	Swift River	1,000	50	"	"
21.	PL3827 10/07/89	Astor	775	39	"	"
22.	PL3828 10/07/89	Swift River	1,000	49	"	"
23.	PL3829 10/07/89	Swift River	1,000	50	"	"
24.	PL3830 10/07/89	Swift River	1,000	50	"	3 year option, 5% NSR, \$50,000 max. per lease.

25.	PL14806 09/20/89	Swift River	830	41	"	"
26.	PL14807 09/20/89	Swift River	1,000	50	"	"
27.	PL14862	Swift River	830	41	"	"
28.	PL14863	Swift River	1,000	50	"	"
29.	PL2220	Sovereign	980	48	St. Moritz Res. Vancouver, B.C.	Agreement with Royal Sovereign Resources, sub-leasees, 3 yr. option & 5% NSR.
30.	PL2221	Sovereign	1,000	50	"	"
31.	PL987	Sovereign	880	42	"	"
32.	PL1015	Sovereign	500	25	"	"
33.	PL21623	Sovereign	50	25	"	"
34.	PL21435 06/21/89	Sovereign	500	25	Ron-Bren Holdings. Quesnel, B.C.	"
35.	PL21436	Sovereign	Bench	42	"	"
36.	PL21437	Sovereign	Bench	44	"	"
	TOTAL		26,695m (16.58mi)	1,484h (3,667 acres)		

THE PROPERTIES

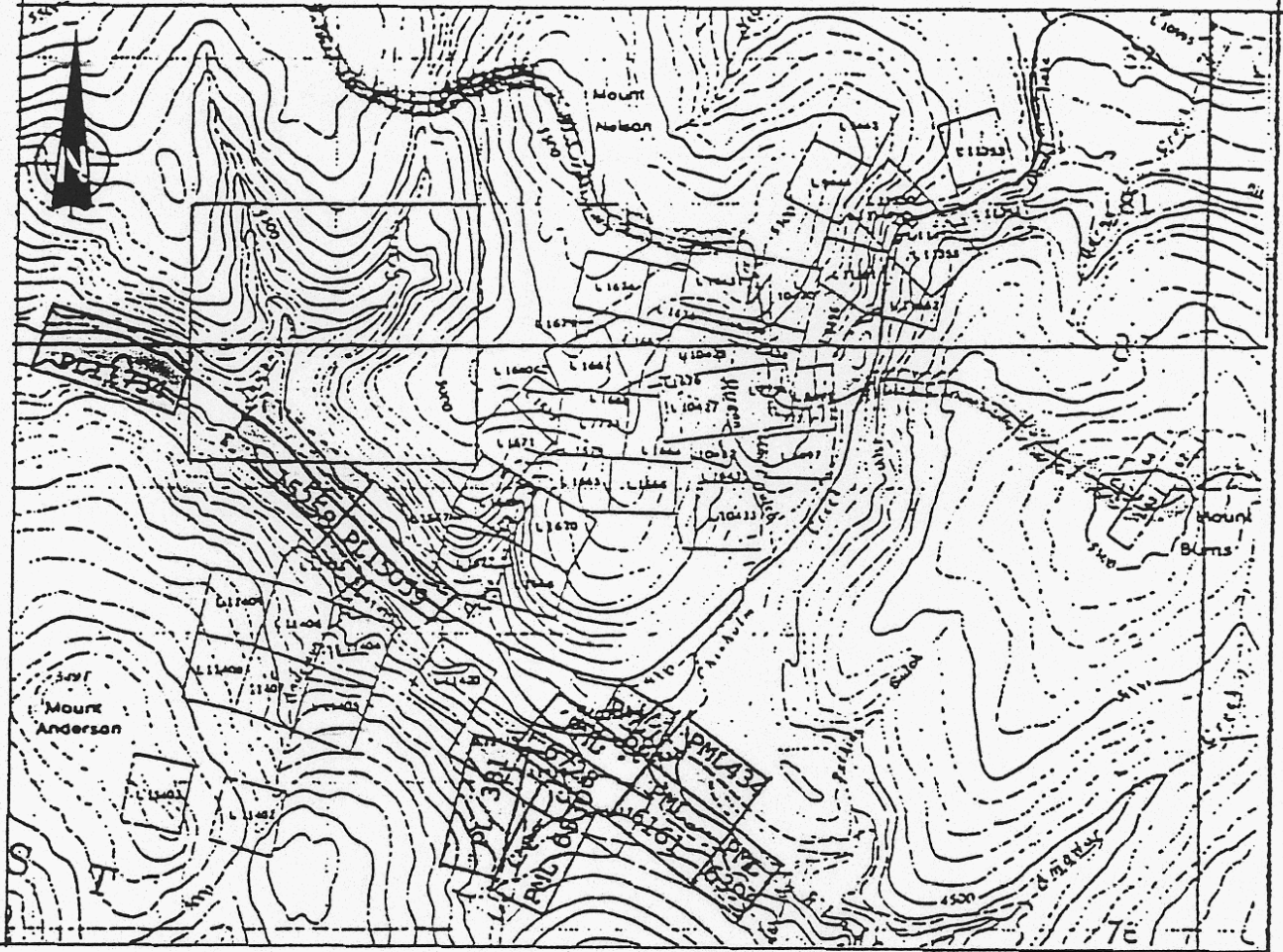
NOTES CONCERNING DEEP LEAD MINING POTENTIALS

Lightning Creek and Tributaries

PML6396, 616, 6728, 6830, 434. PL381, 68, 15059, 15258 and 11734.

ISL Resources owns or has optioned ten leases on this famous gold bearing creek. The property encompasses nearly 8,000m of creek bed and 429 hectares of ground from just below Grub Gulch upstream to Jawbone Creek at the downstream extremity. Much has been written about the gold production from Lightning Creek and the historic town of Stanley that is contained within the boundaries of the ISL property. Gold production at todays price and up until 1945 amounted to some \$40,000,000.00 from the general area described above and there is ample evidence to believe that much of the deep leads supposedly mined out were, in fact, untouched due to the economics of the day and other physical mining factors. Projected resistivity, seismic refraction and further drilling of this rich prospect will shed more light on the subject. See Property Map Figure 2.

← Jawbone 93H 095 ✓
Grub Gulch 93H 100
083 Stanley



PML 6396 ✓
 62 ✓
 97 ✓
 83 ✓
 100 ✓

fig. 2

I S L RESOURCES LTD.
 VANCOUVER, CANADA.

UPPER LIGHTNING CREEK

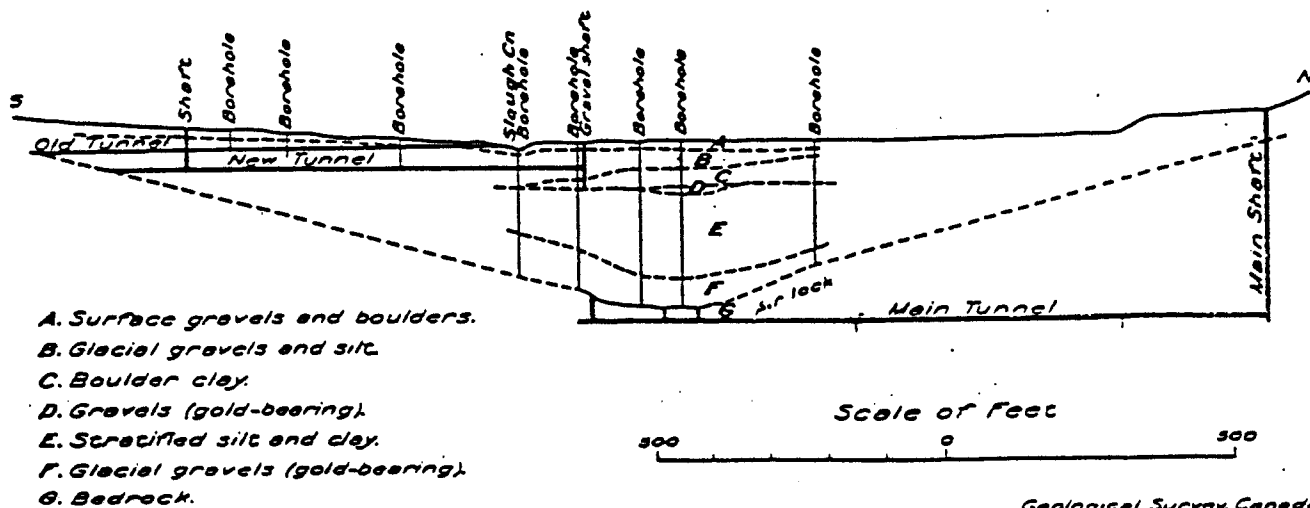
PML 6396, 6161, 6728, 6830 & 434
PL 381, 68, 15059, 15285 & 11734

PROPERTY MAP
 PML:-PLACER MINING LEASES
 PL:-PLACER LEASES

Slough Creek
 PL9627

✓ 93H 105, N. 100

Attempts to mine the deep lead of Slough Creek at it's confluence with Nelson Creek commenced in 1892 and continued, with little success, until September 1907. As in other locations, at that time, the miners were unable to control the flow of ground water. During these fifteen years, an immense amount of energy, time and money was spent. Bore hole tests indicated values at bedrock to run from 7 1/2 dwt/yd³ (11.66g/yd³) to 1 ozt/yd³. Although a 2,100 foot drain tunnel was built and as much as 1 million gallons were pumped per day for some three years; there was no appreciable drop in the water pressure at the raises drilled into the deep lead from drifts below bedrock. (See Cross Section below.) Although there is evidence to support the theory that Slough Creek was scoured by the retreating glacial action; the old timers were uncannily right when they targeted an area to mine. ISL considers Slough Creek to be an excellent prospect. The property option on Slough Creek includes some twenty six hectares of ground on 600m of creek. (See property map figure 3.)



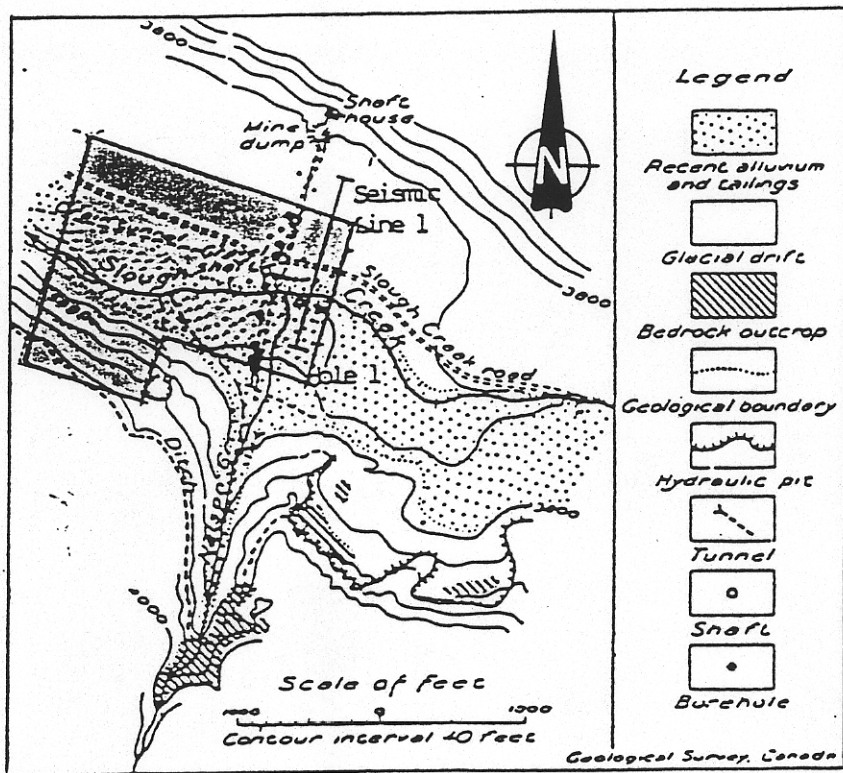


fig. 3

I S L RESOURCES LTD.
VANCOUVER, CANADA.

PROPERTY MAP
PML:-PLACER MINING LEASES
PL:-PLACER LEASES

SLOUGH CREEK PL9627

Swift River and Tributaries

PL3209, 3210, 3211, 3212, 2837, 2838, 2939, 3830, 14806, 14807, 1862 and 14863.

The Swift River rises in close proximity to the source of the historically rich Antler Creek. Early investigation of the creek was hampered by heavy overburden of slum (glacial detritus) a high water table and a lack access for heavy equipment. Published reports are scanty but drilling has revealed that the general criteria for solution mining is met and the bedrock is relatively shallow at 75 feet. The father of the present owner, Maurice Tremblay, drilled twenty four holes on the property in the 1940's. Unfortunately, Tremblay died in 1973 and no details of the drilling program are available other than those contained in the property map - figure 4. What little information is available is sufficient to consider this large property to be of importance. The twelve leases optioned include over 570 hectares of ground and 7,000m of stream bed.

~~43A-055~~
~~431-127~~
New
~~431-127~~

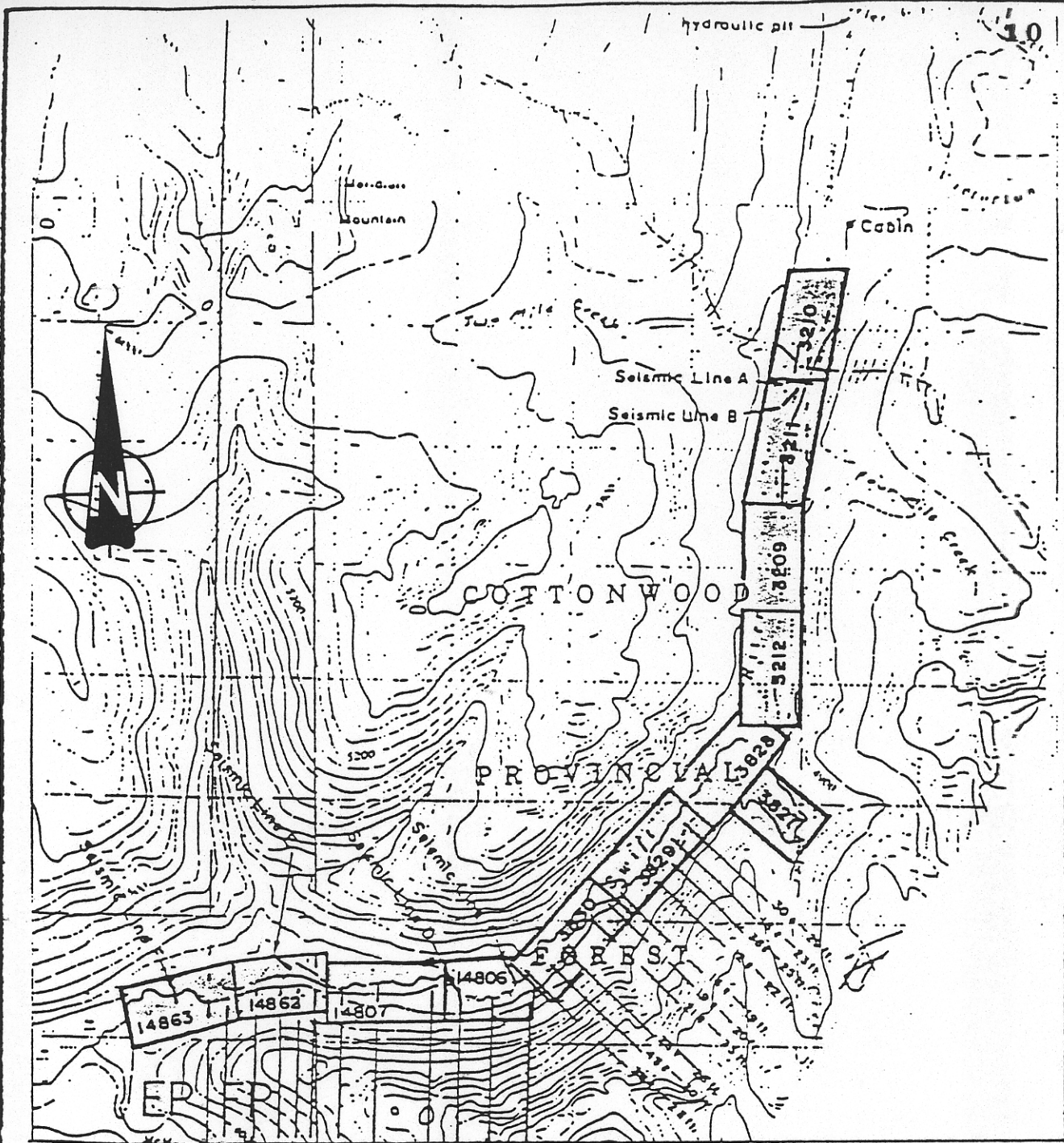


fig.4

I S L RESOURCES LTD.
VANCOUVER CANADA.

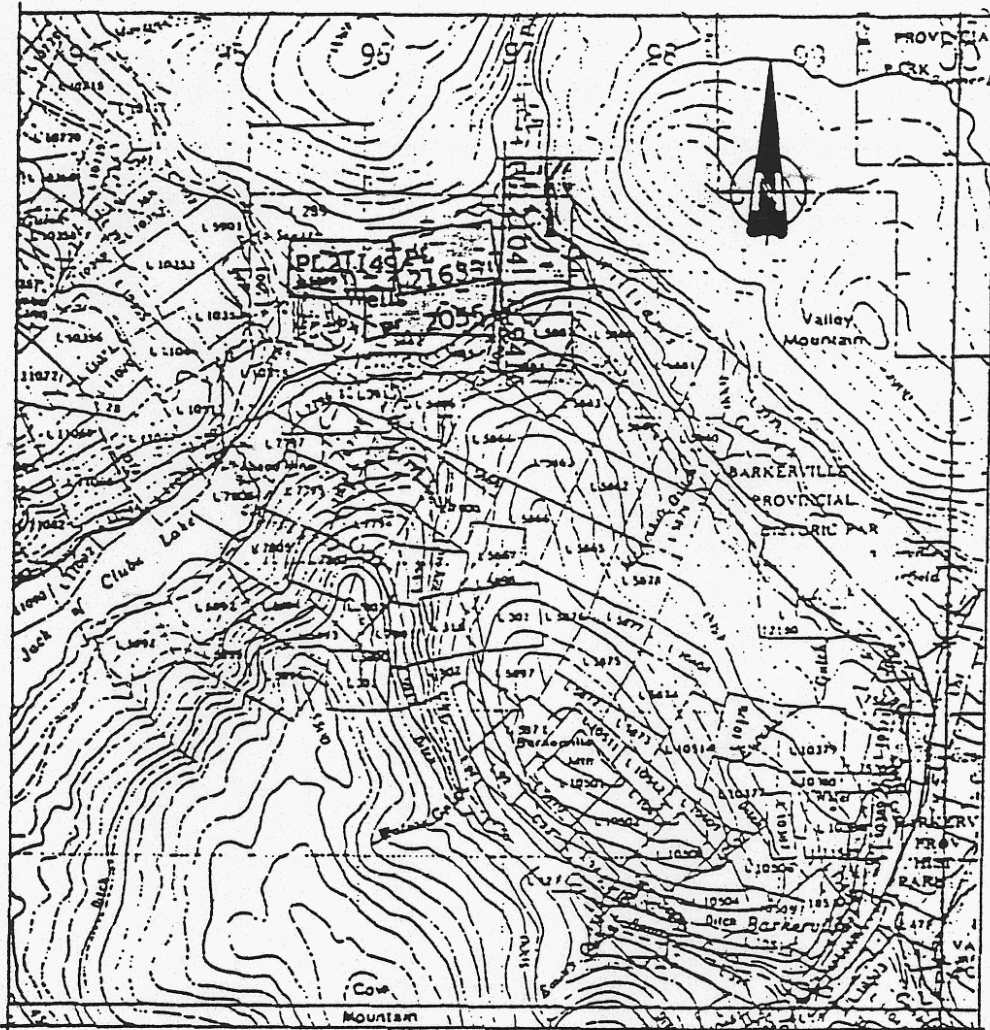
PROPERTY MAP
PML:-PLACER MINING LEASES
PL:-PLACER LEASES

SWIFT RIVER
PL3029,3210,3211,3213,3827,3828
3829,3830,14806,14807,1862 &
14863

The Meadows (William Creek and Willow River)
PL21633, 12104, 9416, 21149 and 20554.

The alluvial flats, known as The Meadows, immediately east of the town of Wells, B.C., contains the drainage from Downey Pass, Williams Creek, Lowhee Creek and Jack of Clubs Creek, some of the most productive creeks in the region. Although present drainage from The Meadows is to the northwest via the Willow River there is considerable geological evidence to suggest that the ancient drainage was by way of Jack of Clubs Lake and Slough Creek. Jack of Clubs Lake is much deeper than the narrow confines of the Willow River valley and Slough Creek has the width, depth and bedrock gradient to support the theory. The Meadows are, therefore, considered to be an important solution mining prospect. The five leases optioned by ISL Resources include some 208 hectares of ground. See Property Map Figure 5.

New



Handwritten signature New

fig. 5

I S L RESOURCES LTD.
VANCOUVER CANADA.

WILLIAMS CREEK & WILLOW RIVER
PL 21633, 12104, 9416,
21149 & 20554

PROPERTY MAP
PML:-PLACER MINING LEASES
PL:-PLACER LEASES

Handwritten scribble

Handwritten scribble

Sovereign Creek

PL2220, 2221, 987, 1015, 21623, 21435, 21436 and 21437.

Sovereign Creek is part of the Swift River system and the eight leases optioned by ISL Resources cover over 300 hectares of ground and 3,450m of creek bed. See Property Map Figure 6. Although there are some records of prospecting, no serious work was performed on Sovereign Creek until 1946. At that time, Donald D. Fraser, geologist, of Quesnel, carried out extensive reconnaissance, pitting and drilling for a Quebec company during the 1946-47 period. Fraser was hampered by his inability to cope with the water table above the slum and for reason best known to him never investigated in any degree the presence of gravels below the slum when drilling. However, he did leave very good records of the work he did. Royal Sovereign Resources working the lower Fraser report area broke through the slum near rimrock and encountered well washed gravel. Unfortunately, the hoe being used to excavate was unable to go into the gravel more than four feet but the small yardage tested 0.931/yd³. Sovereign Creek presently has some half dozen small operations working the flats and benches apparently with some success. A drilling program is being planned for early in 1989 by Royal Sovereign Resources and the results will be made available to ISL Resources.

9/21/89

New ?

PHASE I DRILLING PROGRAM

General

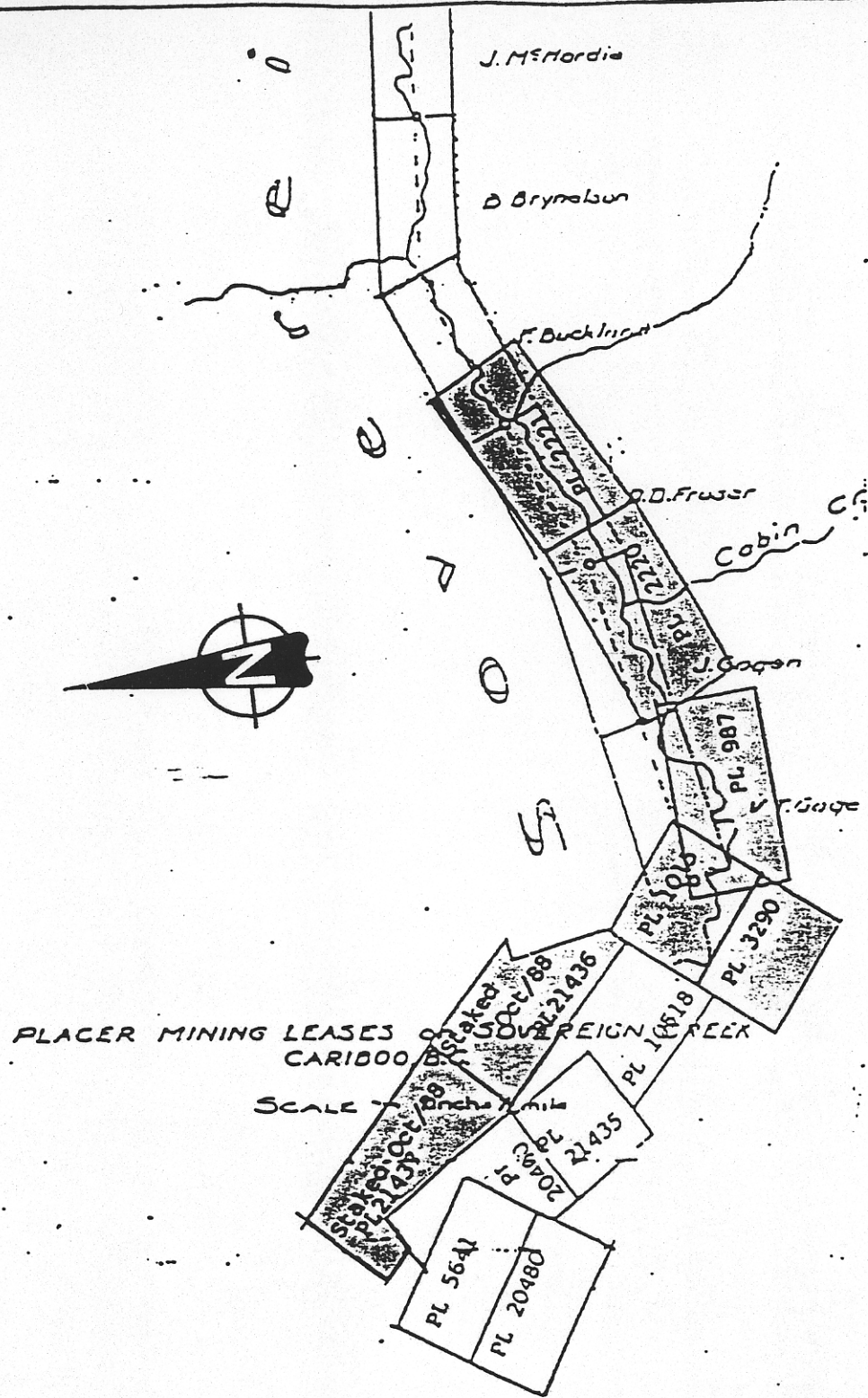
Seismic refraction carried out by Frontier Geosciences Ltd. of North Vancouver during the latter part of June 1988 defined specific targets on both Slough Creek at the confluence of Nelson Creek and Lightning Creek in the vicinity of the historical town of Stanley. See figures 1 and 2.

The Phase I drilling program undertaken by ISL Resources Ltd. was carried out in the later summer of 1988. The object of the program was to drill the targets indicated by seismic refraction, namely, the deep leads, and locate rich placer gold reserves believed to be disseminated in the saturated gravels immediately above bedrock. (Ref. figures 7, 8 and 9.)

In addition to the above seismic targeted drill locations, one "wildcat" was drilled at The Meadows in close proximity to the town of Wells.

Equipment

The Phase I drilling program used a "Barber 24" reverse circulation/percussion type drill owned and operated by Owen Drilling Ltd. of Cranbrook, B.C. Support facilities were



PLACER MINING LEASES OF CARIBOO DISTRICT, BRITISH COLUMBIA
 SCALE 1 INCH = 1 MILE
 SOVEREIGN CREEK

fig. 6

I S L RESOURCES LTD.
 VANCOUVER CANADA.

SOVEREIGN CREEK
 PL. 2220, 2221, 987, 1015,
 21623, 21436 & 21437

PROPERTY MAP
 PML:-PLACER MINING LEASES
 PL:-PLACER LEASES

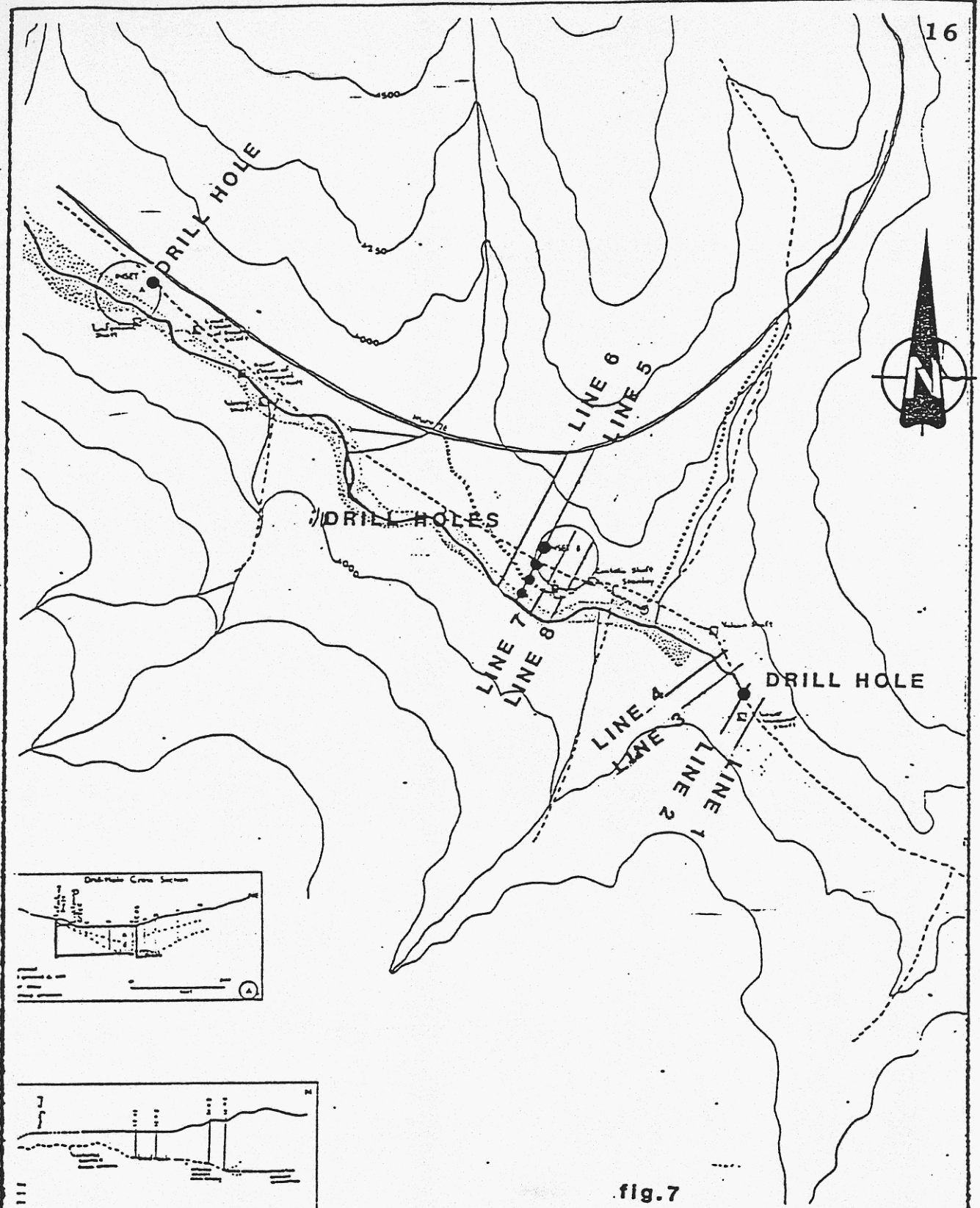


fig.7

I S L RESOURCES LTD.
 VANCOUVER, CANADA.

**LOCATION OF SEISMIC
 PROFILES ON UPPER
 LIGHTNING CREEK**

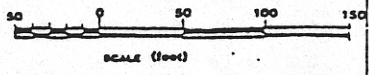
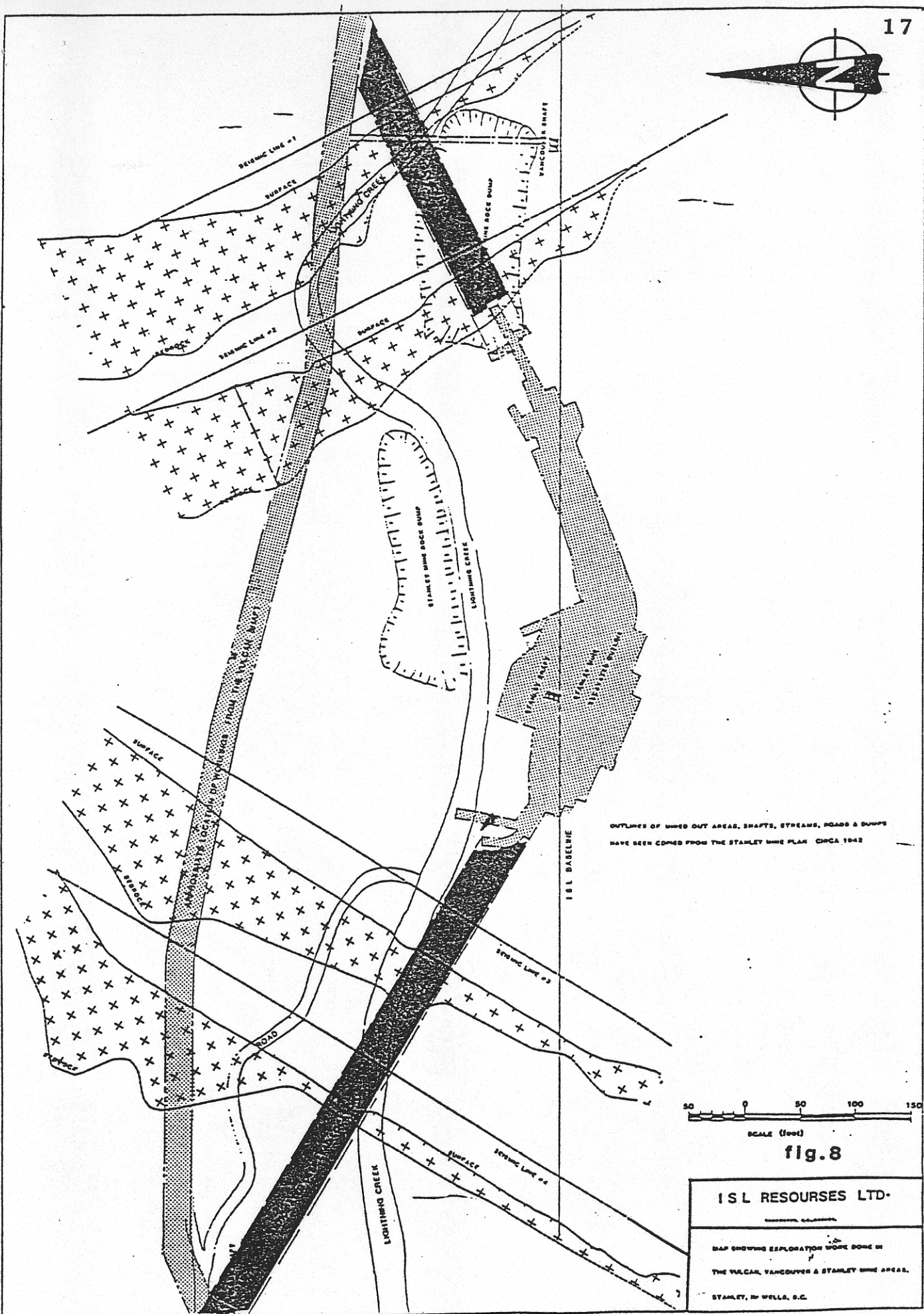
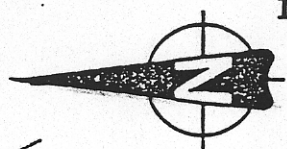
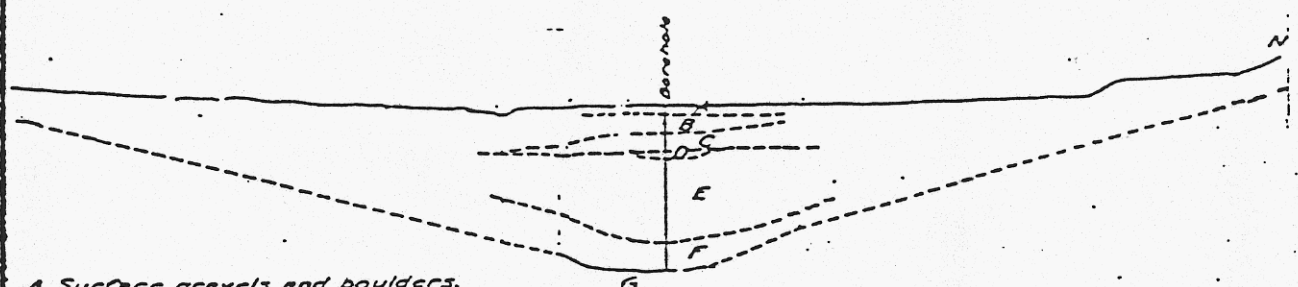
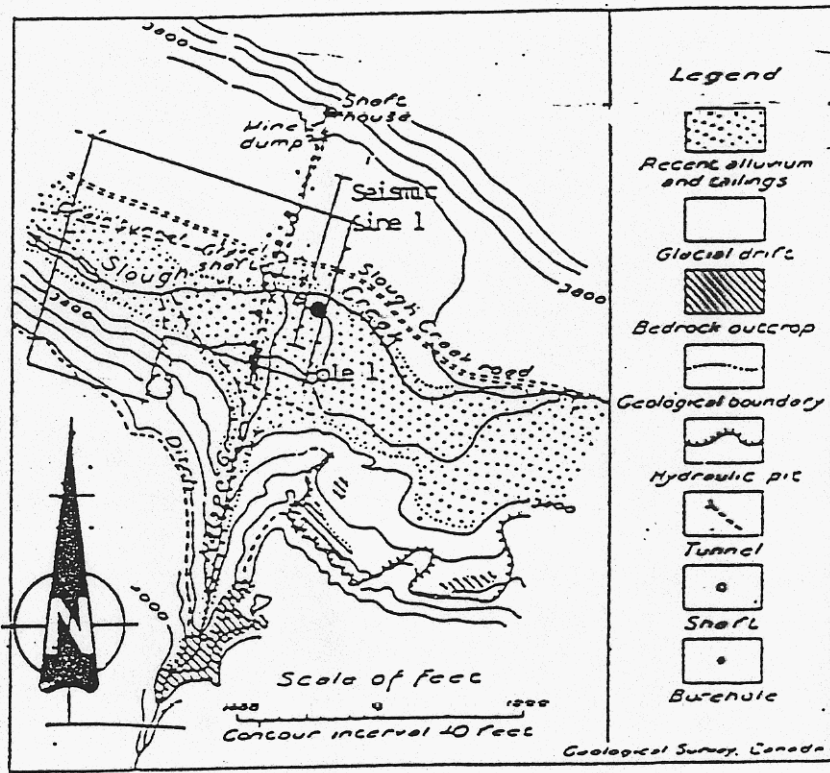


fig. 8

I S L RESOURCES LTD.
INCORPORATED IN CANADA

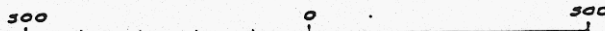
MAP SHOWING EXPLORATION WORK DONE IN
 THE VULCAN, VANCOUVER & STANLEY MINE AREAS,
 STANLEY, IN WELLS, B.C.



- A. Surface gravels and boulders.
- B. Glacial gravels and silt.
- C. Boulder clay.
- D. Gravels (gold-bearing).
- E. Stratified silt and clay.
- F. Glacial gravels (gold-bearing).
- G. Bedrock.

fig. 9

Scale of Feet



I S L RESOURCES LTD.
VANCOUVER CANADA.

**SLOUGH CREEK
SEISMIC & DRILLING.**

provided by ISL Resources Ltd. personnel. Access roads and drill sites were prepared by local contractors.

The Barber 24 drill rig proved to be relatively fast in reaching bedrock targets. A drill collar is welded to the initial length of rotating casing and precedes an internal percussion hammer. Samples of the soils and gravels are blown to the surface by high pressure air introduced down the hammer stem and vented up between stem and casing to an air cyclone. Vented air escapes vertically from the cyclone and the samples fall or are blown down into container bags or pails. The hammer breaks any consolidated material or rock into particles having a maximum single dimension of no more than 45mm. The Barber drill efficiently transported volumetrically uniform samples to the surface when penetrating consolidated material. The samples were easily contained in bags or pails as long as the hammer travel did not exceed about 60mm. Excessive hammer travel resulted in the necessity of changing containers due to the increase in sample volume which resulted in some loss of material. It was impractical to use larger containers than 20 litre pails, or bags that would accommodate similar volume, due to the weight factor.

The Barber rig did not perform as well in unconsolidated or saturated material. The high pressure air released from the core of the hammer expanded outwardly from the foot of the casing until the pressure dropped sufficiently to allow material to

"sluff" in and allow firstly water then a low density pulp of no more than 10 - 15% by weight to be blown to the surface. The high velocity of the material delivered to the air cyclone made it extremely difficult to contain the samples.

It is our considered opinion that the Barber 24 drill is entirely unsatisfactory for drilling unsaturated or unconsolidated material.

Sampling Method

Sampling from the surface to a point estimated to be close to the interface of the "slum" or glacial debris and the saturated gravel layer took place every ten feet or at a noticeable change in the material brought to the surface. Sampling in the saturated gravel above bedrock occurred every two feet and consisted of one overflowing 20 litre plastic pail or equivalent plastic bag. Each bag or pail was immediately tagged with hole number and the depth at which the sample was taken. The samples were left to settle out before excess water was poured off and were then transported to the Dyson Camp located one mile west of the Wells Highway and a half mile south. The Dyson cleanup station was used to process all of the samples. A 5m by long by 40cm washing and stratifying trough was used to feed a two metre long by 20cm cleanup sluice. The sluice was lined with a fine felt mat overlaid with 15mm expanded metal. Mr. Bill Dyson to

whom the equipment belonged, had many years of experience of recovering fine gold in the area and had demonstrated to this writer and other officers of ISL Resources that he was very proficient at processing samples for assay.

Concentrate from the cleanup sluice, amounting to 250ml, was put into a stainless steel pan and examined with a 40x monocular microscope. The tailing from the sluice were retained in a tub and rebagged, tagged and the concentrate added back to the sample. The cleanup sluice was set at 1 1/2:12 pitch and only enough water was introduced to the sluice to keep the material just moving.

DRILL HOLE DESIGNATION

<u>Hole No.</u>	<u>Creek Name</u>	<u>Seismic Line No.</u>	<u>Depth Drilled</u>	<u>Elev. Collar above Stream Bed</u>	<u>General Location</u>
SC1/SL1	Slough Ck.	1	272'	1 ft.	On the left bank of Slough Creek at the confluence of Nelson Creek.
LC1/SL2	Lightning Creek	2	102"	21 ft	20m north of the right bank of Lightning Creek on Grub Gulch Road directly north of the Vancouver shaft.
LC1/SL5	"	5	96'	66 ft	On a line 105m due north of the C/L of the Stanley Rd., 200m west of the west fence of the Stanley Cemetery.
LC2/SL5	"	5	98'	64 ft	On a line 127.5m due north of the C/L of Stanley Rd., 200m west of the west fence of the Stanley Cemetery.
LC3/SL5	"	5	154'	97 ft	On a line 187m due north of the C/L of the Stanley Rd., 200m west of the west fence of the Stanley Cemetery.
M1	Jack of Clubs Ck.		134'	6 ft	40m west of the left bank of Jack of Clubs Creek & 100m south of the confluence with Williams Creek.
		Total	856'		

ISL RESOURCES LTD
PHASE I DRILLING PROGRAM
Table 1 Jan. 1989 RVJ

ISL RESOURCES LTD
 Ste. 1080 - 999 West Hastings Street,
 Vancouver, B.C.

Hole No. SC1/SL1 Date: 5TH AUG, 1988.
 Location: SLOUGH CK. AT CONFLUENCE OF NELSON
 Driller: OWEN DRILLING LTD.
 Drill Type: BARGER 24.
 Time Start: 0830 5/8 Time Finish: 1545 - 7/8

Smpl No.	Smpl Wt.	Footage From	To	Remarks Drill Point	Remarks Laboratory	Wt.	\$*
		0	70	GREY GLACIAL TILL			
		70	82	GREY SILT & CLAY			
		82	120	GREY/BLUE CLAY.			
		155	170	SMALL SATURATED WASHED GRAVEL, ANGULAR TO SUB-ANGULAR, QUARTZ, PHYLLITE, LIMESTONE, GREENSTONE, VERY LITTLE BLACK SAND			
		170	235	AS ABOVE WITH ADDITIONAL PYRITES.			
		235	251	AS ABOVE / WATER TURNING BROWN			
		251	272	AS ABOVE / WATER GREY WITH SUSPENDED CLAY.			
			272	BEDROCK - VERY SHALLOW DECOMPOSED PHYLLITE			
				SEE NOTES ATTACHED			
					<i>R. J. J. Jones</i>		

TABLE 2

Notes concerning drill hole SCl/SL1

Fine particulate gold was recovered from the surficial detritus but only in trace quantities. Better concentrations of small gold particles were recovered at the 80 foot level. This was an outsider observer's pan sample and there is no guarantee that the sample was not contaminated from another source. Further, the depth at which the sample was taken would nullify conventional mining. The sample was not retained.

No impervious layer of clay (slum) was intercepted at this drill hole location and this fact might rule out the possibility of solution mining. Other local geological evidence of tributary hanging valleys may also contribute to the theory that the Slough Creek valley was scoured by the receding ice. However, it was the bore holes completed by the old timers that was the precursor of very extensive underground work that was carried on for many years at great cost. See Memoir 149, W. A. Johnson & W. L. Uglow, 1926.

ISL RESOURCES LTD
 Ste. 1080 - 999 West Hastings Street,
 Vancouver, B.C.

Hole No. LC1/SL2 Date: 10TH AUG., 1988.
 Location: RT. BANK OF LIGHTNING CR ON ROAD NR VANCOUVER SHAF
 Driller: OWEN DRILLING LTD.
 Drill Type: BARBER 2A.
 Time Start: 0730 Time Finish: 1830

Smpl No.	Smpl Wt.	Footage		Remarks Drill Point	Remarks Laboratory	Wt.	\$*
		From	To				
		0	25	DRY SANDY BROWN GRAVEL.			
		25	66	GLACIAL TILL			
		66	80	" " SMALL GRAVEL.			
		80	94	COURSER GRAVEL & SAND. SOME WATER			
		94	102	SATURATED GRAVEL/CLAY/WOOD CHIPS			
NO COLOURS OBSERVED AT ANY LEVEL / TOP 25' DID PRODUCE BLACK SAND AND VERY SMALL TRACE COLOURS IN ONE PAN. WOOD CHIPS BROUGHT TO THE SURFACE WOULD INDICATE THE VULCAN DRUG OR CROSS CUT DRIFT.							
<u>P. Raines</u>							

TABLE 3

ISL RESOURCES LTD
 Ste. 1080 - 999 West Hastings Street,
 Vancouver, B.C.

Hole No. LC1/SL5 Date: 13TH AUG., 1988.
 Location: LINE 700M WEST OF CEMETERY - 105M NORTH OF ROAD
 Driller: OWEN DRILLING LTD. *CL*
 Drill Type: BARBER 24
 Time Start: 0800 Time Finish: 1 30

Smpl No.	Smpl Wt.	Footage From	To	Remarks Drill Point	Remarks Laboratory	Wt.	\$*
		0	15	BROWN SANDY WASHED GRAVEL.			
		30	35	DRY GLACIAL TILL			
		35	66	WET GLACIAL TILL			
		66	71	WET SMALL GRAVEL.			
		73	76	CEMENTED SAND WITH SMALL			
				ANGULAR GRAVEL - VERY HARD / VERY DRY			
		76	92	Boulder layer - sandy matrix / DRY.			
			92	BEDROCK - GREY PHYLLITE CHIPS.			
				NO APPARENT DECOMPOSITION.			
				TRACE COLOURS IN TOP 15' / AVERAGE BLACK SAND.			
				NO OTHER INDICATION OF VALUES & VERY LITTLE			
				BLACK SAND AT ANY OTHER LEVEL. NO SATURATED			
				GRAVEL			
				<i>Revised</i>			

TABLE 4

ISL RESOURCES LTD
 Ste. 1080 - 999 West Hastings Street,
 Vancouver, B.C.

Hole No. LC2/S15 Date: 13TH AUG, 1988.
 Location: LINE 200M WEST OF CEMETERY - 127M NORTH OF ROAD €
 Driller: OWEN DRILLING LTD
 Drill Type: BARBER 2A
 Time Start: 1440 Time Finish: 1750

Smpl No.	Smpl Wt.	Footage From	To	Remarks Drill Point	Remarks Laboratory	Wt.	\$*
		0	24	BROWN SANDY GRAVEL.			
		24	36	PARTIALLY WET GLACIAL TILL.			
		36	72	WET TILL.			
		72	80	DRY - SMALL GRAVEL.			
		80	91	COMPACTED DRY SAND & Boulders.			
		91'	96'	BEDROCK - COMPOSED PYLITE.			
				ALTHOUGH SOME COLOURS FOUND IN TOP 6 FEET - NO COLOURS WERE FOUND IN DEEPER GROUND. VERY LITTLE BLACK SAND. VERY HARD DRILLING AS WITH LC1. NO SATURATED GRAVEL.			
				P. J. J. J.			

TABLE 5

ISL RESOURCES LTD

Ste. 1080 - 999 West Hastings Street,
Vancouver, B.C.

Hole No. LC3/SL5 Date: 14th AUG 1988.

Location: LINE 200M WEST OF CEMETERY - 187M NORTH OF ROAD E

Driller: OWEN DRILLING LTD

Drill Type: BAISER 24

Time Start: 0740 Time Finish: 1350 / 15/8

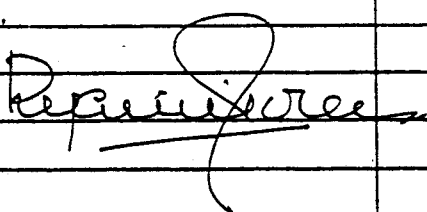
Smpl No.	Smpl Wt.	Footage From	To	Remarks Drill Point	Remarks Laboratory	Wt.	\$*
		0	46	BROWN (DRY) GRAVEL.			
		46	58	DRY GLACIAL TILL.			
		58	107	DAMP GLACIAL TILL.			
		107	114	GLACIAL TILL / SMALL GRAVEL.			
		114	125	BOWLDIC LAYER - SANDY MATRIX			
		125	132	GREY GRAVEL HARD DRILLING - (OPEN HOLE)			
		132	144	" " LESS CEMENTATION - (CASING)			
		144	154	WET CLAY (TILL) 20-30% MOISTURE			
		154		BEDROCK			
<p>HOLES LC 1, 2 & 3 ARE VERY SIMILAR IN COMPOSITIONS WHEN COMPENSATING FOR COLLAR ELEVATIONS. WET CLAY NEAR AND AT BEDROCK IN HOLE LC3 MAY INDICATE BEING CLOSER TO SATURATED GRAVEL LAYER. NO COLOURS OBSERVED IN SURFACE GRAVEL OR ELSEWHERE AT DEPTH. VERY LITTLE BLACK SAND BELOW 46' LEVEL.</p>							
							

TABLE 6

ISL RESOURCES LTD
 Ste. 1080 - 999 West Hastings Street,
 Vancouver, B.C.

Hole No. M1 Date: 16TH AUG, 1988.
 Location: 40M WEST OF JACK OF CLUBS CREEK -
100M SOUTH OF CONFLUENCE WITH WILLIAMS.
 Driller: OWEN DRILLING LTD.
 Drill Type: "BARBER 24"
 Time Start: _____ Time Finish: _____

Smpl No.	Smpl Wt.	Footage		Remarks Drill Point	Remarks Laboratory	Wt.	\$*
		From	To				
		0	15	BROWN SANDY GRAVEL - DRY.			
		15	35	BOULDER LAYER - SANDY MATRIX			
		35	55	" " " "			
		55	74	SANDY CLAY WITH BOULDERS.			
		74	80	SMALL GRAVEL IN GREY CLAY.			
		80	96	DRY CLAY / GLACIAL TILL			
		96	115	SATURATED GRAVEL - RED/BROWN WASH.			
		115	134	" " - BROWN WASH.			
			135	BEDROCK			

NOTE: a. TOWN WATER WELL LOCATED 1000' SOUTH NEAR SITE OF NORTHWOOD RESTAURANT - LOWWEE CREEK TAILINGS TO 20' THENCE GLACIAL TILL TO 136' - BEDROCK REACHED AT 156' OVER LAIN WITH SATURATED GRAVEL.
 b. SEISMIC REFRACTION AT POINT 400' NORTH OF LIQUOR STORE INDICATED BEDROCK AT 185'
 c. WELL DRILLED BELOW NEW ADIT AT MOSQUITO MINE ADJACENT TO HIGHWAY REPORTED TO BE MUCH THE SAME AS TOWN WELL / BEDROCK AT 192'
 d. SEISMIC REFRACTION AT WEST END OF NORTHWOOD DRIVE INDICATED BEDROCK AT 10'. OTTO SCHMIDT REPORTS THREE DEEP CHANNELS TOWARD MOSQUITO WELL.

THE ABOVE INFORMATION FROM - A. WILKINSON OF WELLS.

Ryan Jones



fig.10

I S L RESOURCES LTD.
 VANCOUVER, CANADA.

"WILDCAT HOLE"

DRILLED WITH THE BARBER DRILL