

CONSOLIDATED GOLD ALLUVIALS OF B. C. LTD

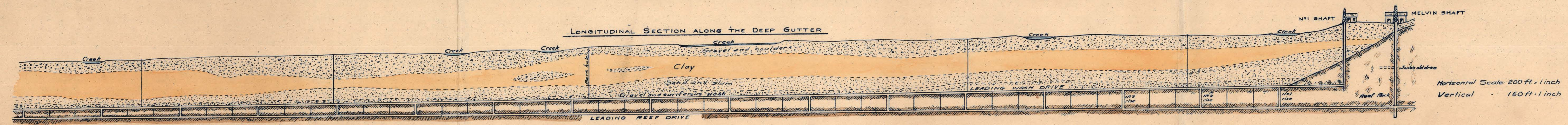
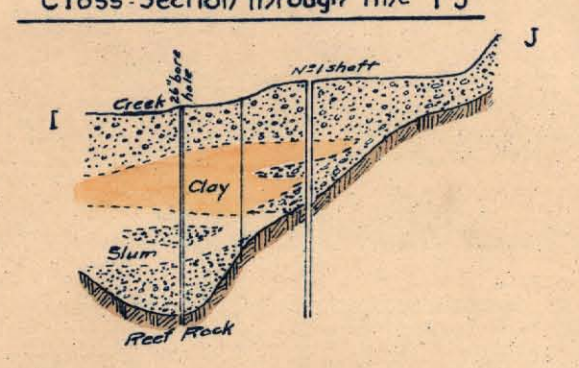
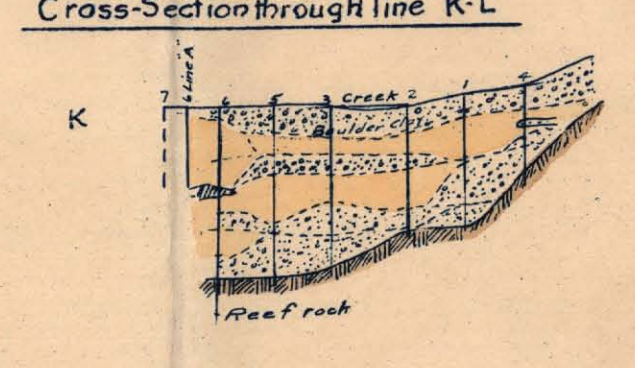
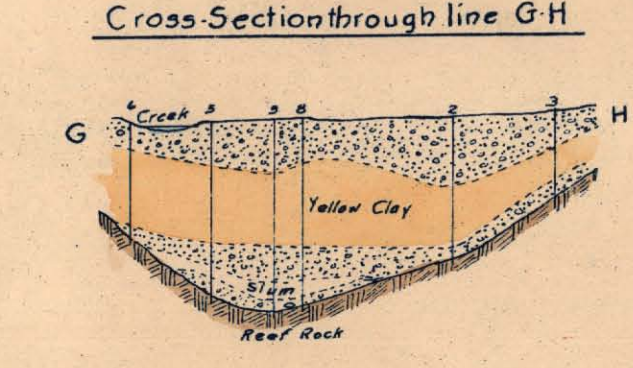
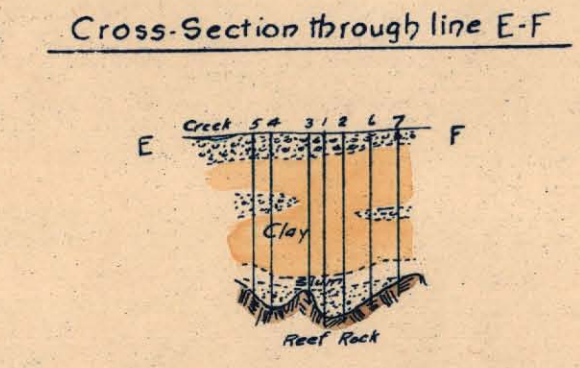
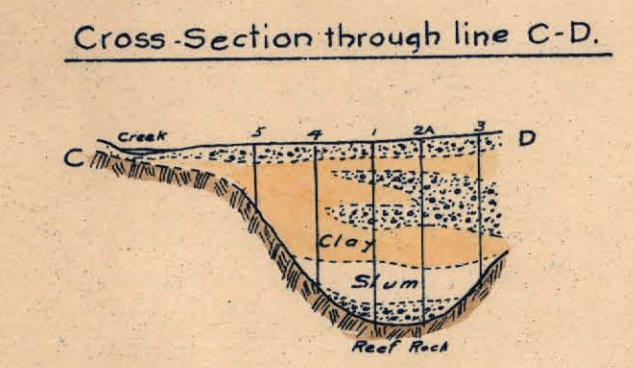
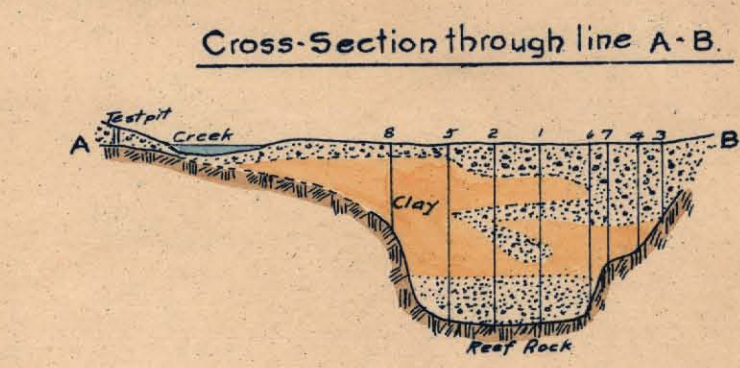
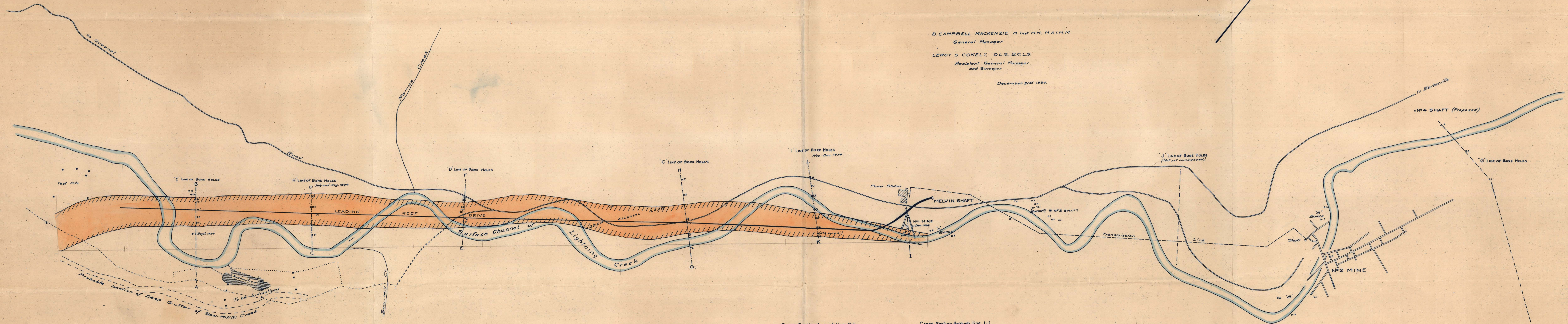
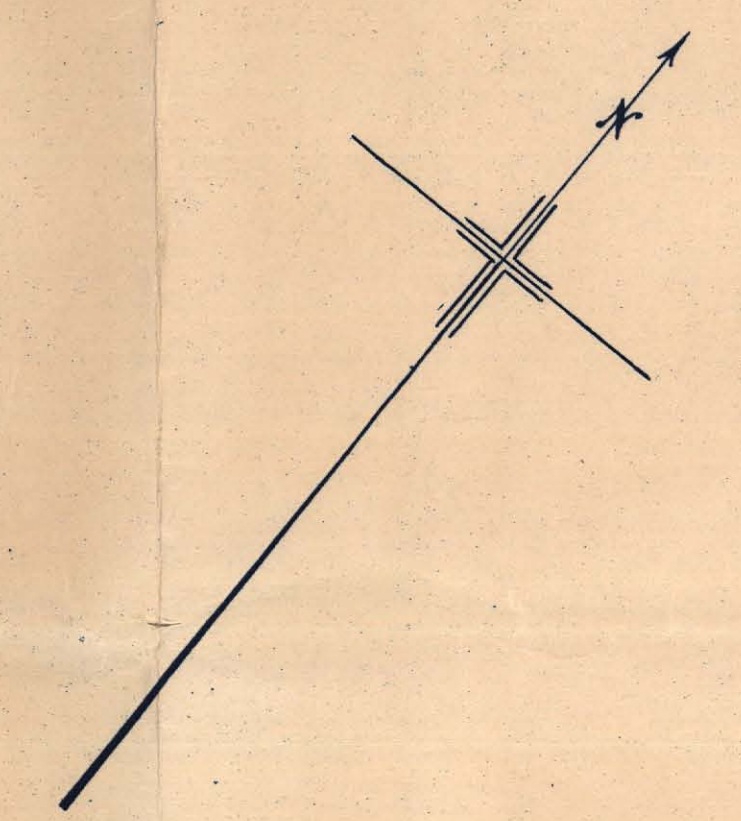
MAP OF WINGDAM SECTION

SCALE: 200 FEET = 1 INCH

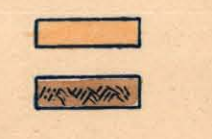
D. CAMPBELL MACKENZIE, M. Inst. M.M., M.A.I.M.M.
General Manager

LEROY S. COKELY, D.L.S., B.C.L.S.
Assistant General Manager
and Surveyor

December 31st 1934



Deep Leads shown
Reef rock shown
Melvin Shaft 280 feet deep



Horizontal Scale 200 ft. = 1 inch
Vertical = 160 ft. = 1 inch

934/4w
PROPERTY FILE