

014775

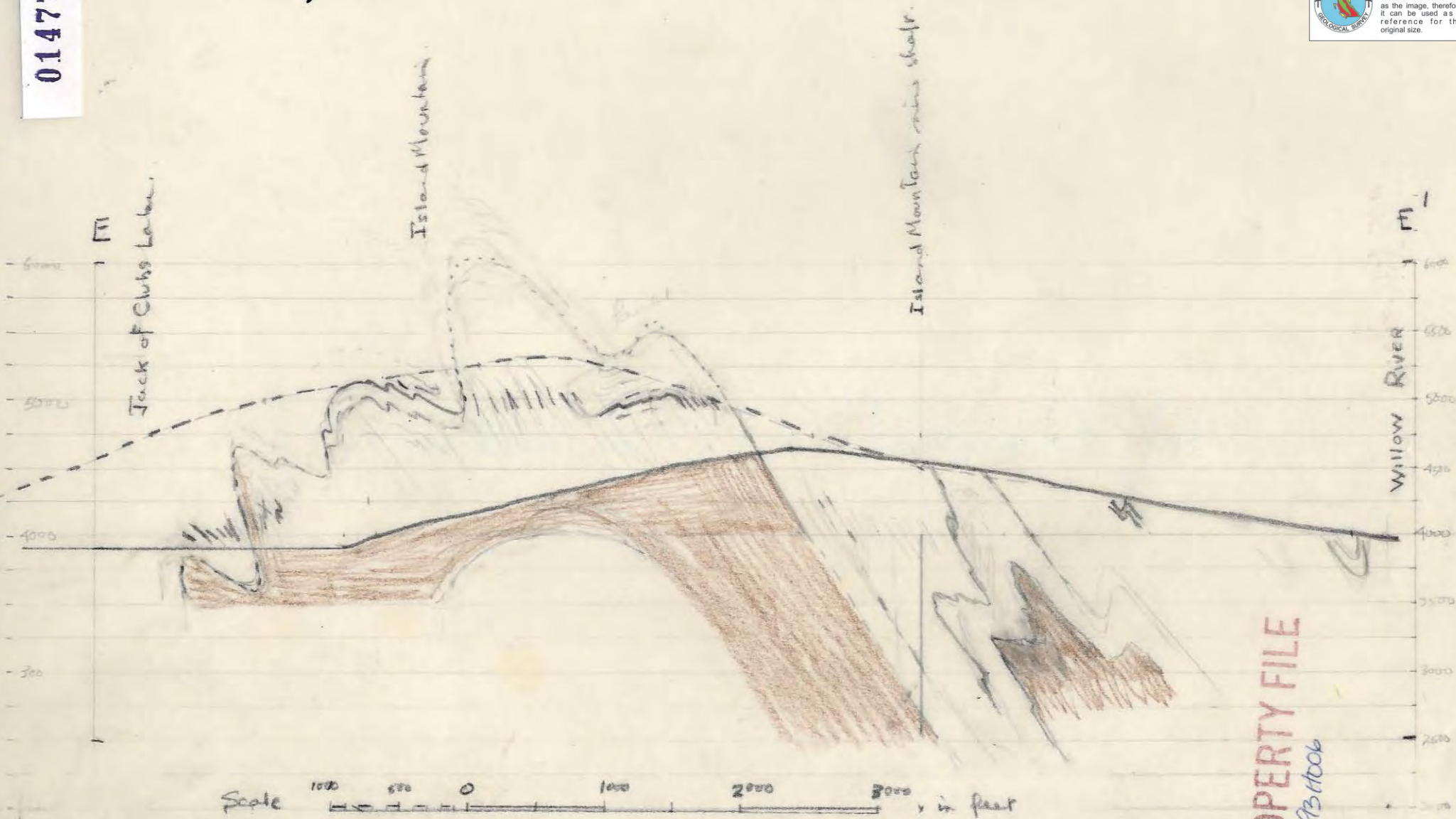
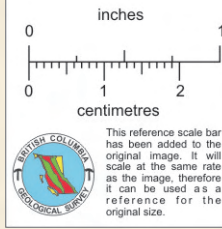


Figure
Section E-E', through Island Mountain mine.

- Snowshoe fm - limestone beds.
- Midas fm
- outline of Island Mountain 2500 south west of section line

PROPERTY FILE
9311006

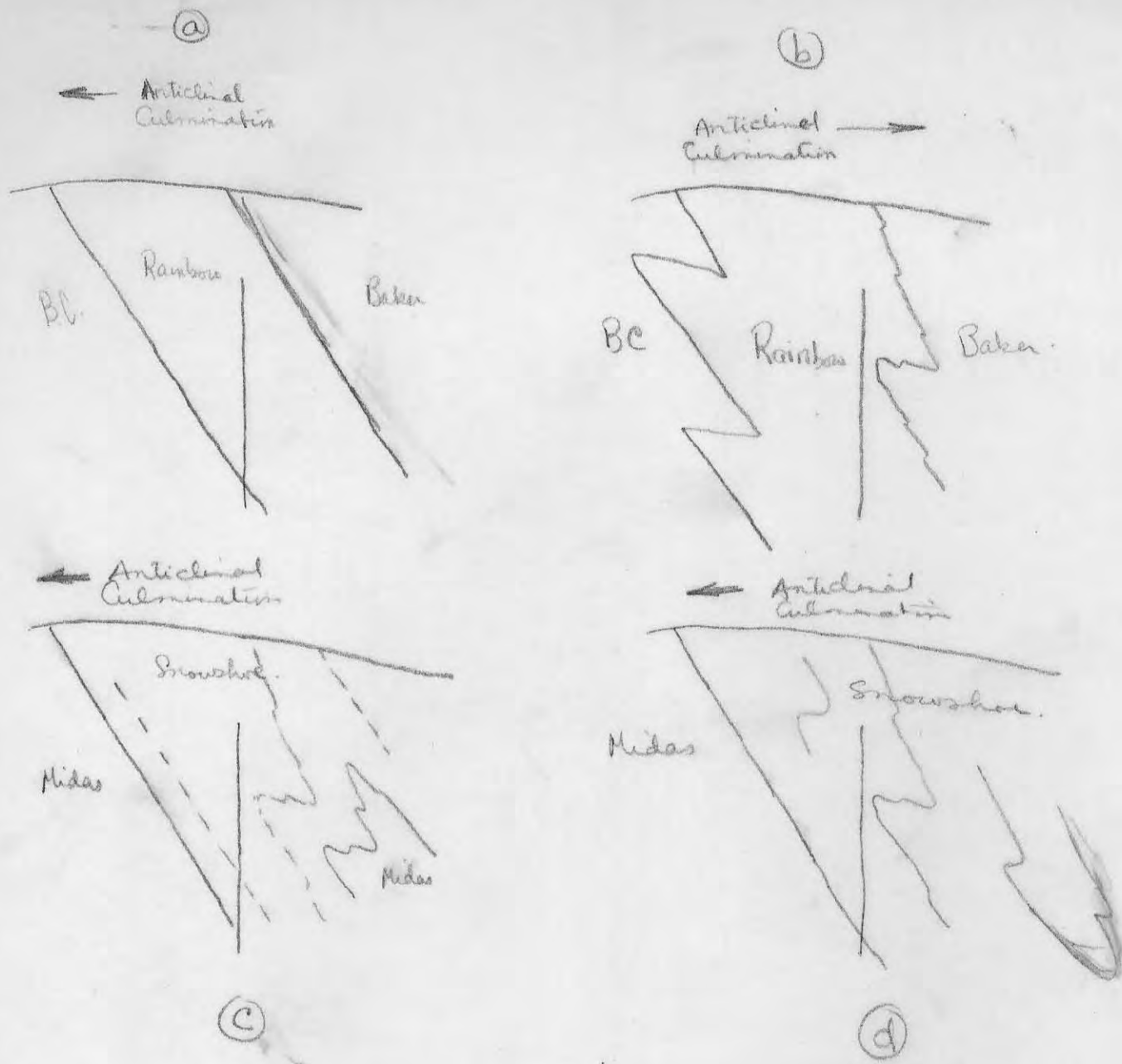


Figure.

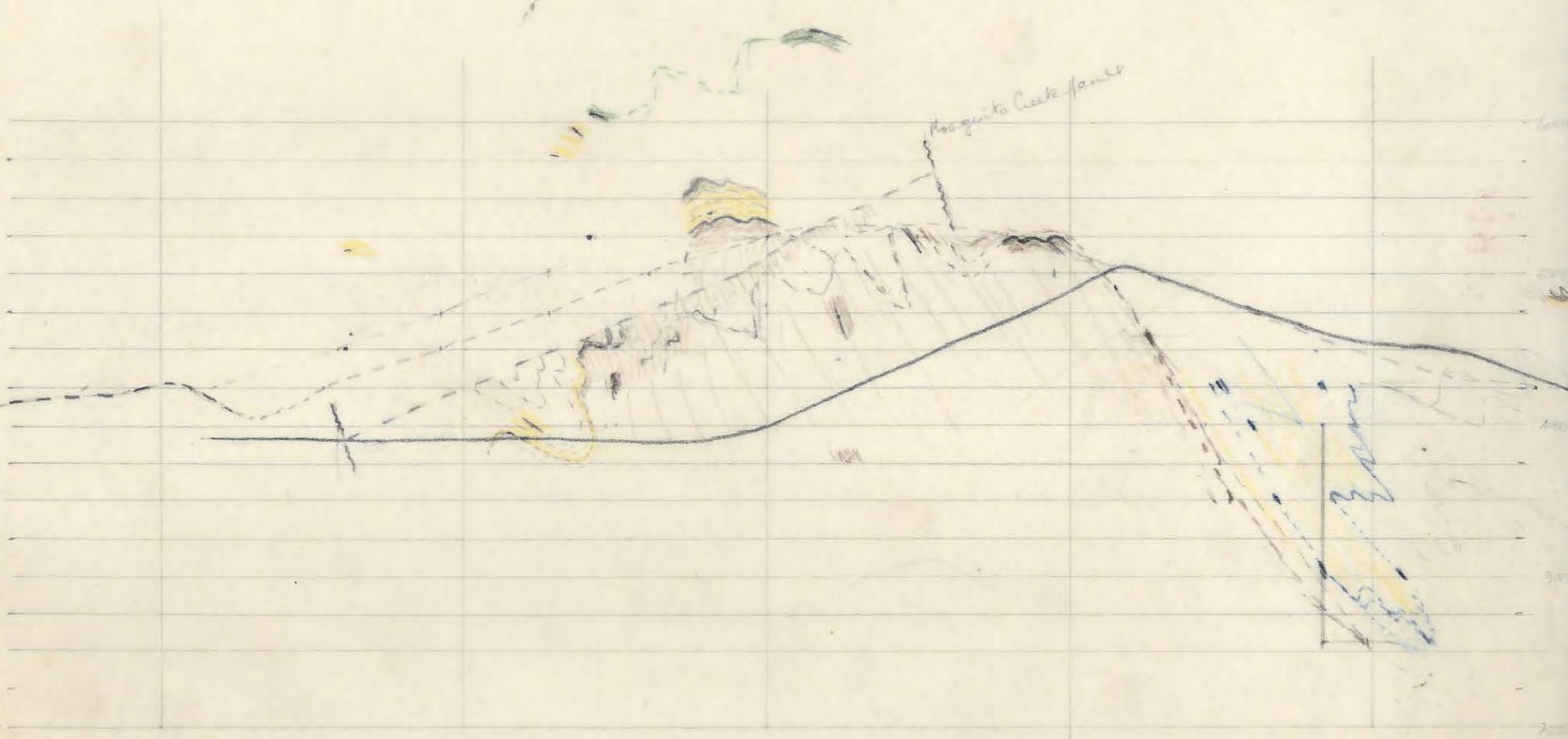
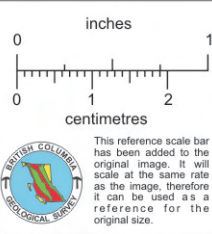
Sketches showing the interpretation of the Fold Structures at Island Mountain Mine, by

- (a) Hanson.
- (b) Benedict.
- (c) S.B.
- (d) S.B.

Viewed looking NW. Arrow points toward peak Anticlinial culmination. Vertical line represent shaft at the mine.

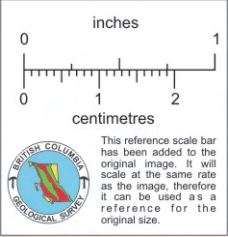
93H006

PROPERTY FILE

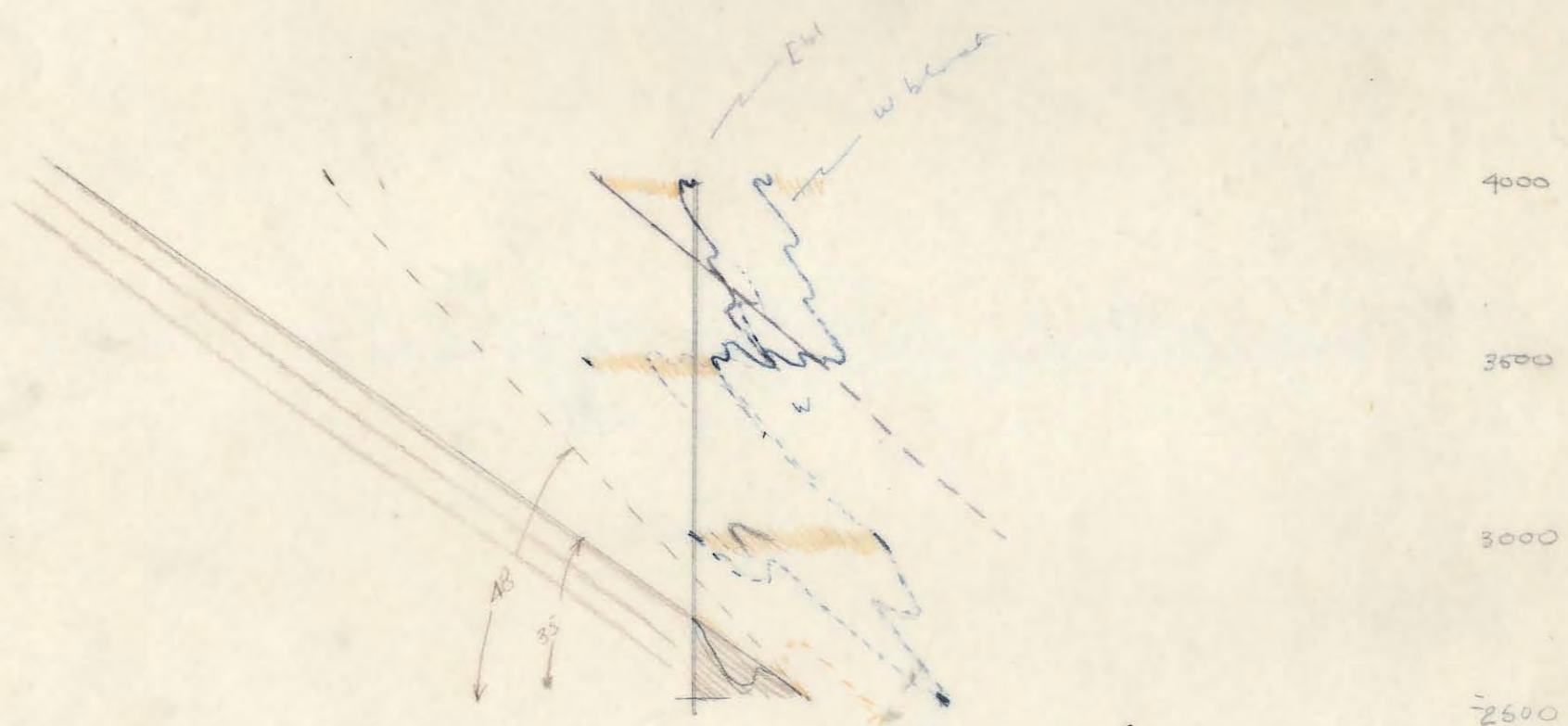


Section Across Island Mtn
1000' = 1 in

PROPERTY FILE
93H006



NE →



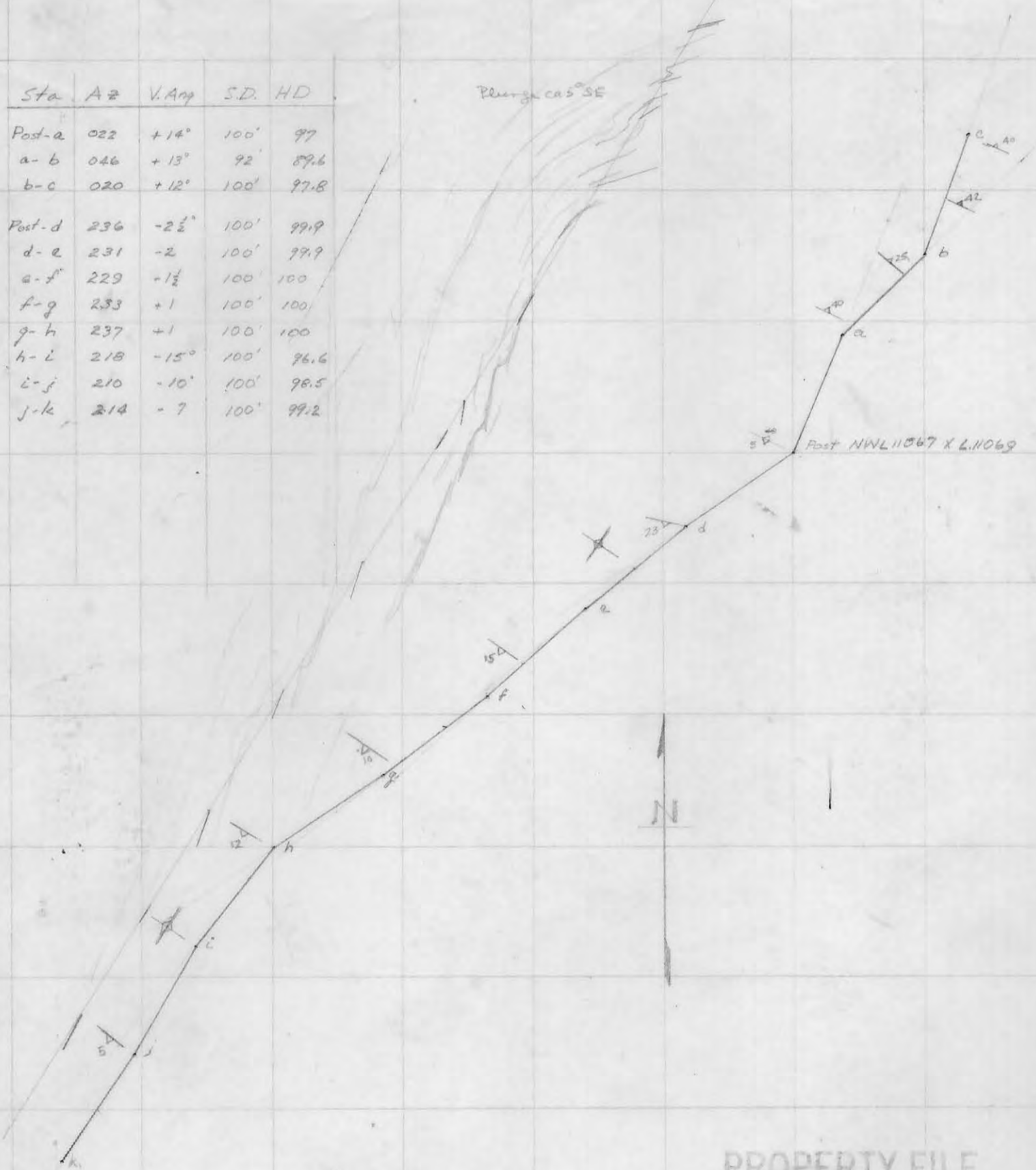
Section through Island Mtn mine
at wing
500 = 1 in.

PROPERTY FILE
93H006

41

Sta	Az	V. Ang	S.D.	HD
Post-a	022	+14°	100'	97
a-b	046	+13°	92	89.6
b-c	020	+12°	100'	97.8
Post-d	236	-2½°	100'	99.9
d-e	231	-2	100'	99.9
e-f	229	-1½	100'	100
f-g	233	+1	100'	100
g-h	237	+1	100'	100
h-i	218	-15°	100'	96.6
i-j	210	-10°	100'	98.5
j-k	214	-7	100'	99.2

Pledge ca 5° SE



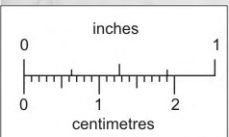
PROPERTY FILE

CHAIN & COMPASS TRAVERSE
S.E. ISLAND MOUNTAIN

July 11 1952

Scale 1"=100'

93H006



This reference scale bar has been added to the original image. It will scale at the same rate as the image, therefore it can be used as a reference for the original size.