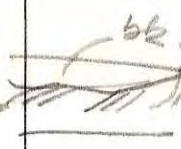


looks like a part of contact relations obscure

silicified replace

limy & quartz
blephyl



35⁴⁰
25

26²⁶

interbedded quartz & some phyl / b = schaly usually

highly fractured
b = schaly in part

dense bk & structureless quartz

silicified could be quartz

fine grey ss rx.

Ma. red lens quartz

interbedded quartz & phyl

4 bk phyl
40

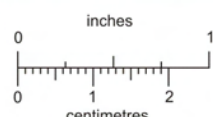
Massive bk quartz
no red quartz

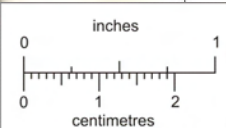
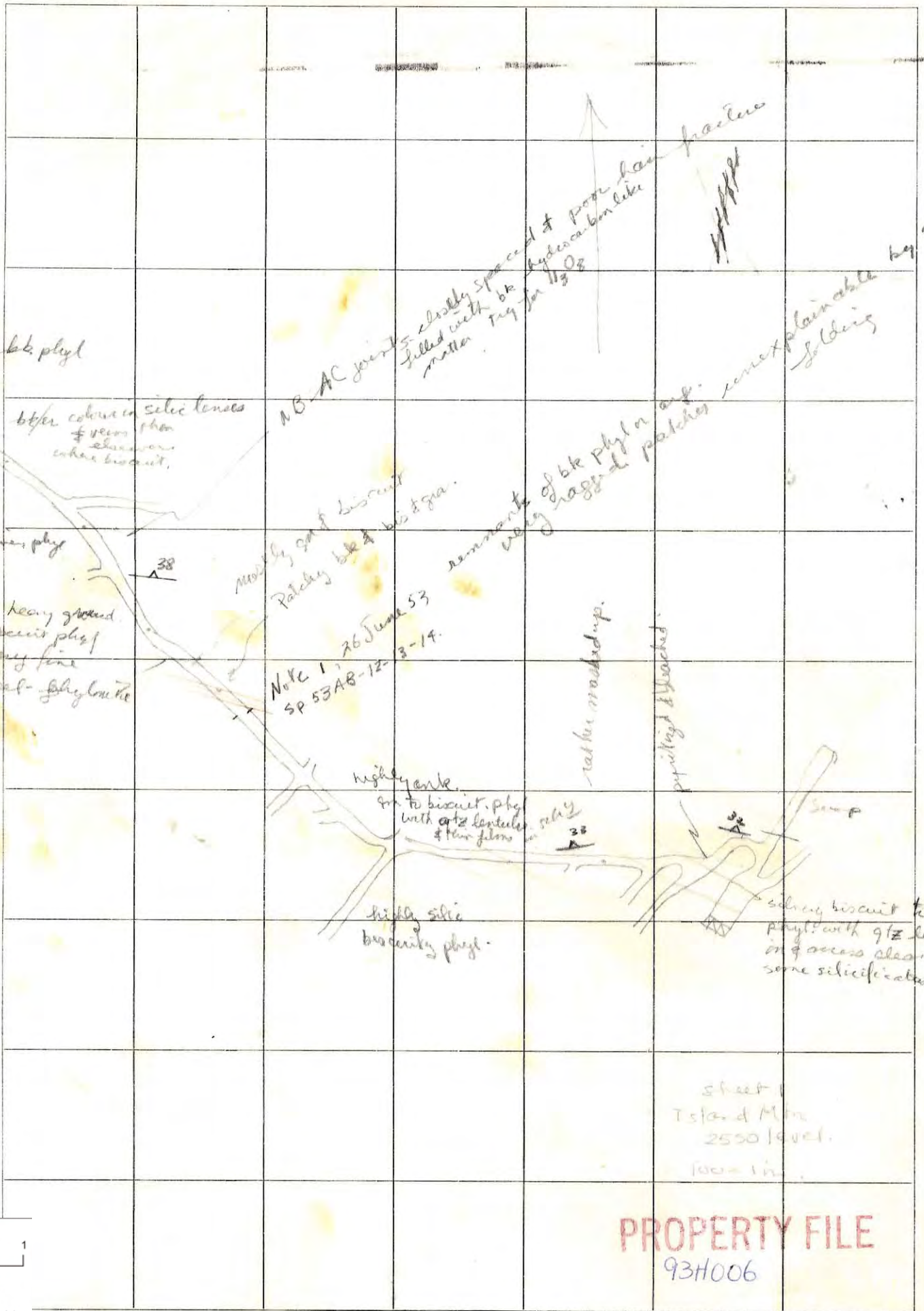
very mica lining
could be replacement
as Alon antonite
vein only about
2' long.

parting chert
etc

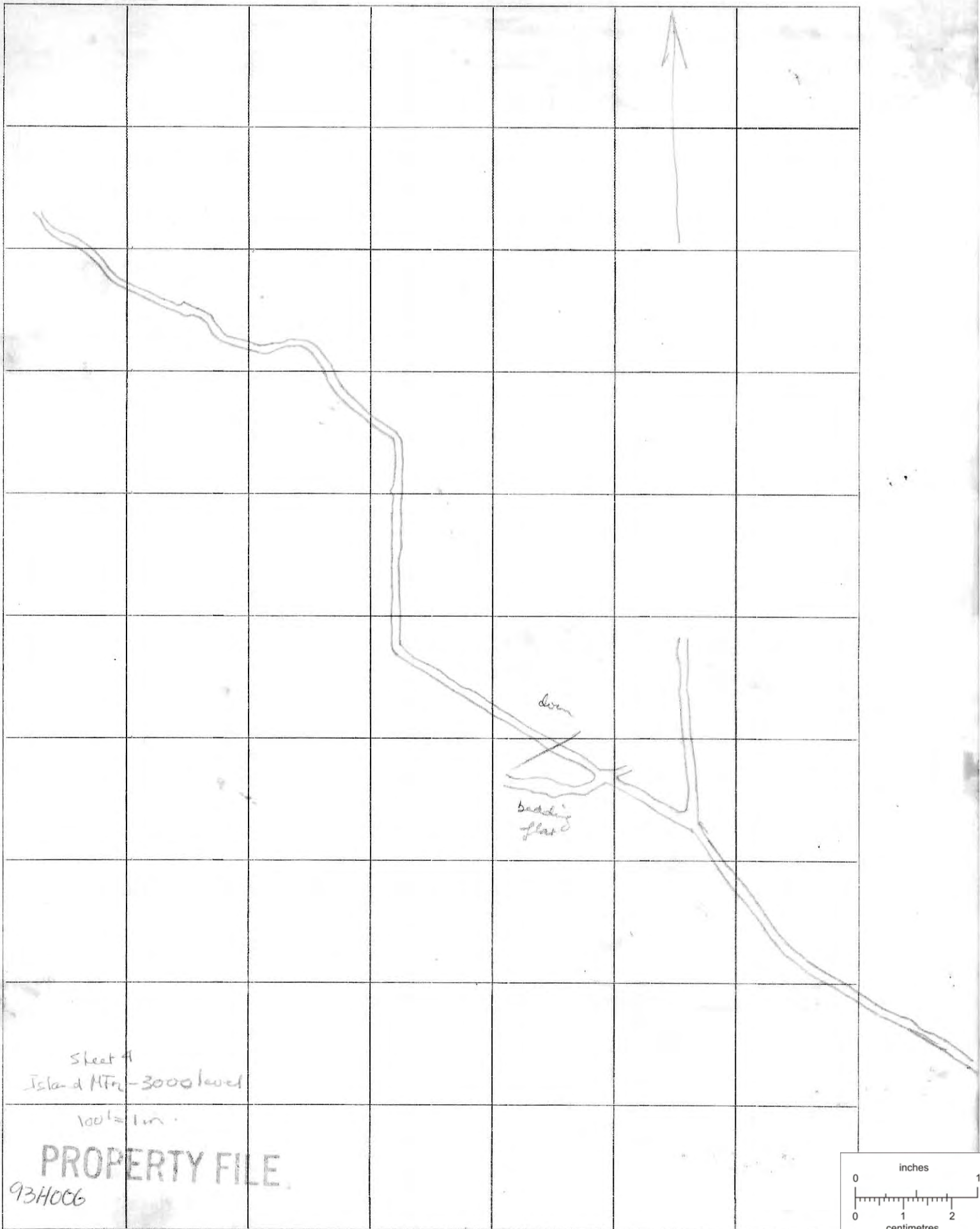
possibly bk phyl
no red quartz
thin 4' vein quartz
but much cherty rock
Sheet 2
Tsh. & RFR
2550 level
10x = 1cm

PROPERTY FILE
934006





PROPERTY FILE
 93H006

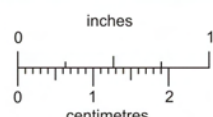


Sheet 4
Island Mtn - 3000 level

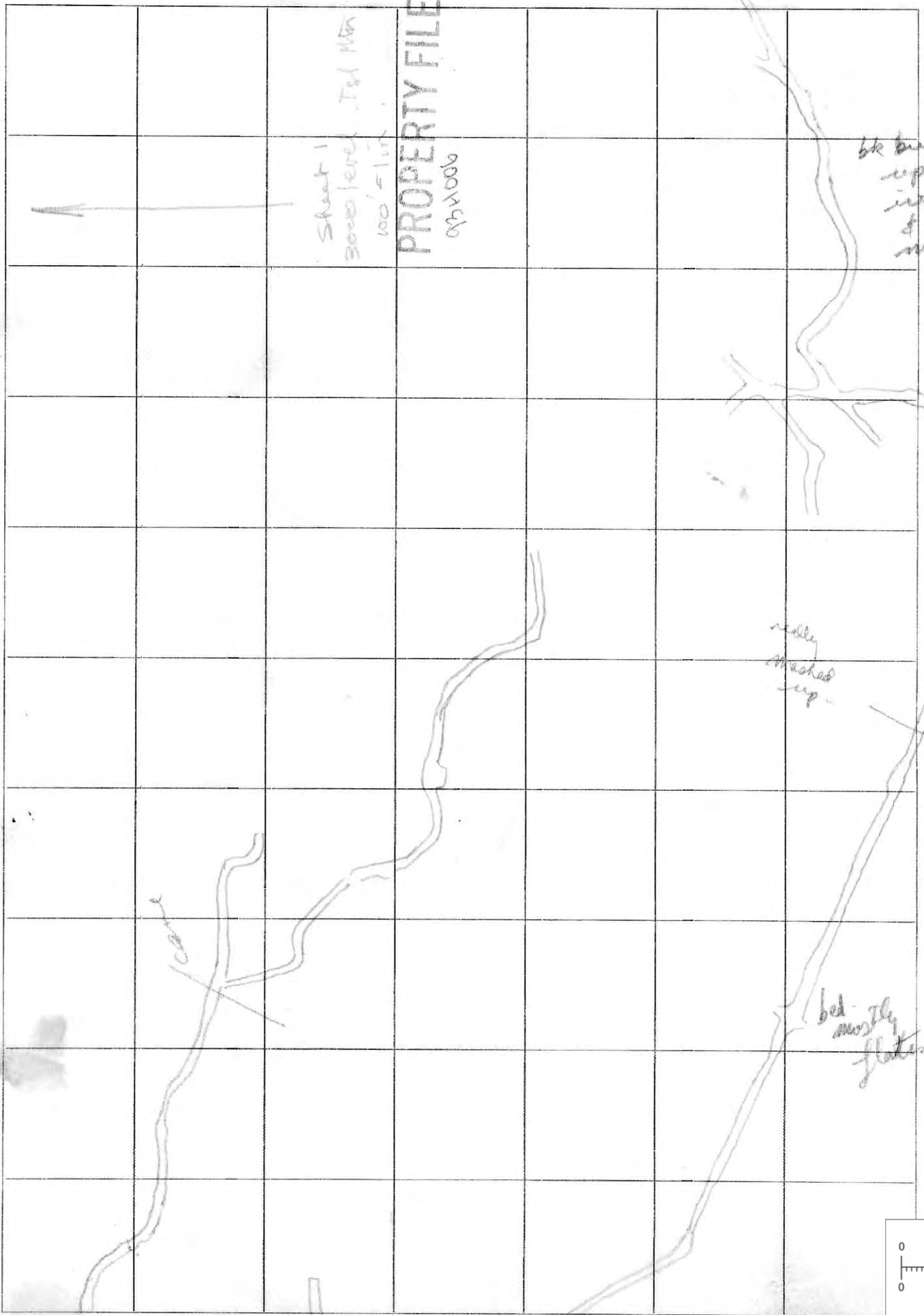
100' = 1 in.

PROPERTY FILE

93H006



BRITISH COLUMBIA
GEOLOGICAL SURVEY
This reference scale bar has been added to the original image. It will scale at the same rate as the image, therefore it can be used as a reference for the original size.



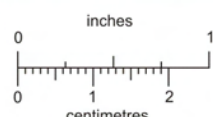
Sheet 1
 3000 level T&M
 100' scale
PROPERTY FILE
 09/1006

bk triggered
 up much
 in gts
 & cl
 mostly
 fine

redly
 washed
 up

bed
 mostly
 flatish

cave



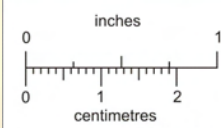
BRITISH COLUMBIA
 GEOLOGICAL SURVEY
 This reference scale bar
 has been added to the
 original image. It will
 scale at the same rate
 as the image, therefore
 it can be used as a
 reference for the
 original size.



93H006
PROPERTY FILE

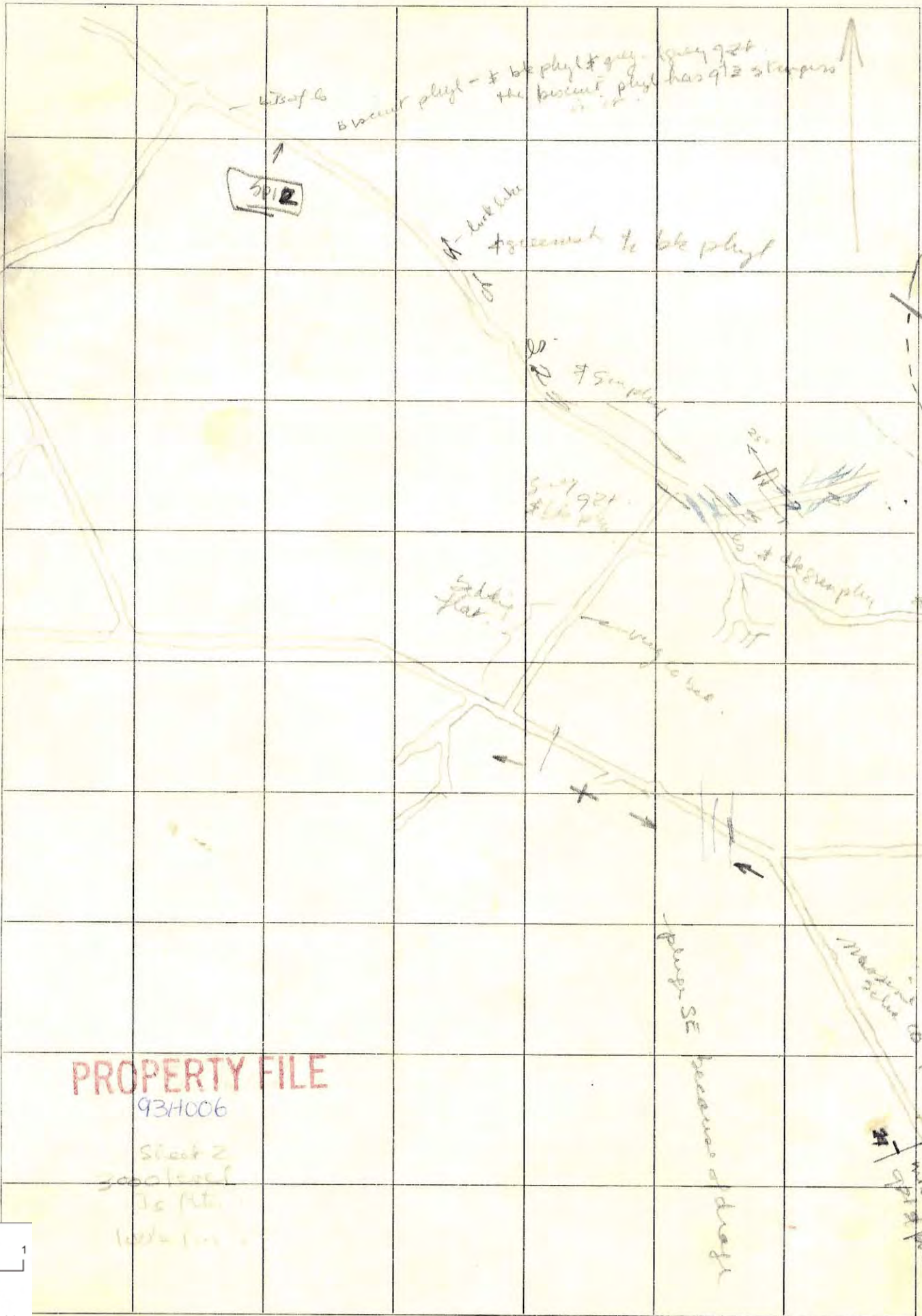
Sheet 3
 3000 level
 I.C. M.F.A.

100' = 1 in.



This reference scale bar has been added to the original image. It will scale at the same rate as the image, therefore it can be used as a reference for the original size.





PROPERTY FILE

93H006

Sheet 2

300' x 300'

To Mt.

100' x 100'

