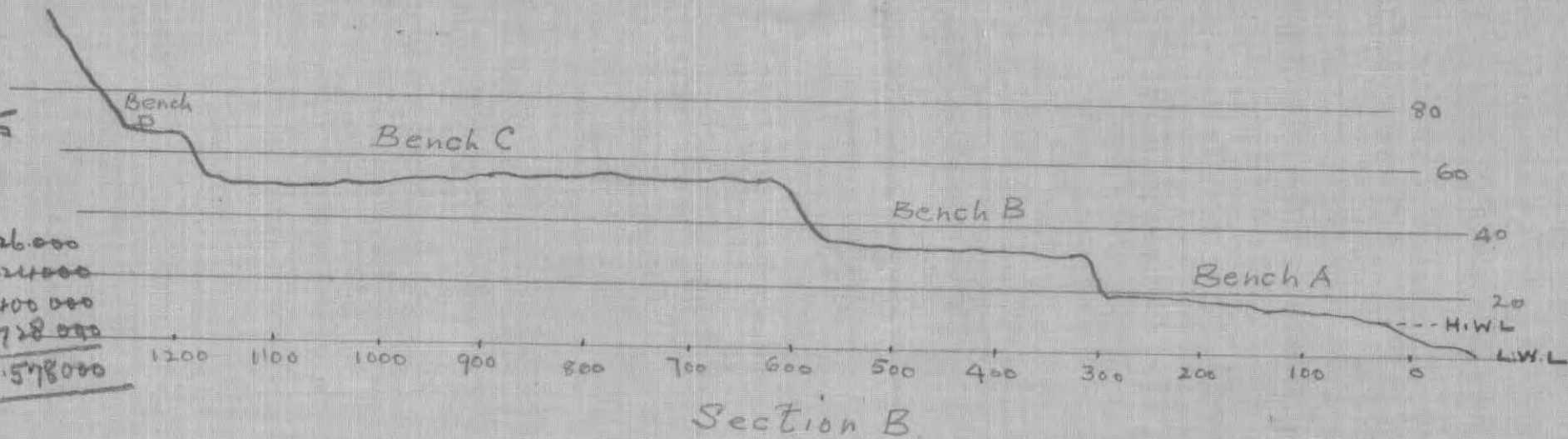
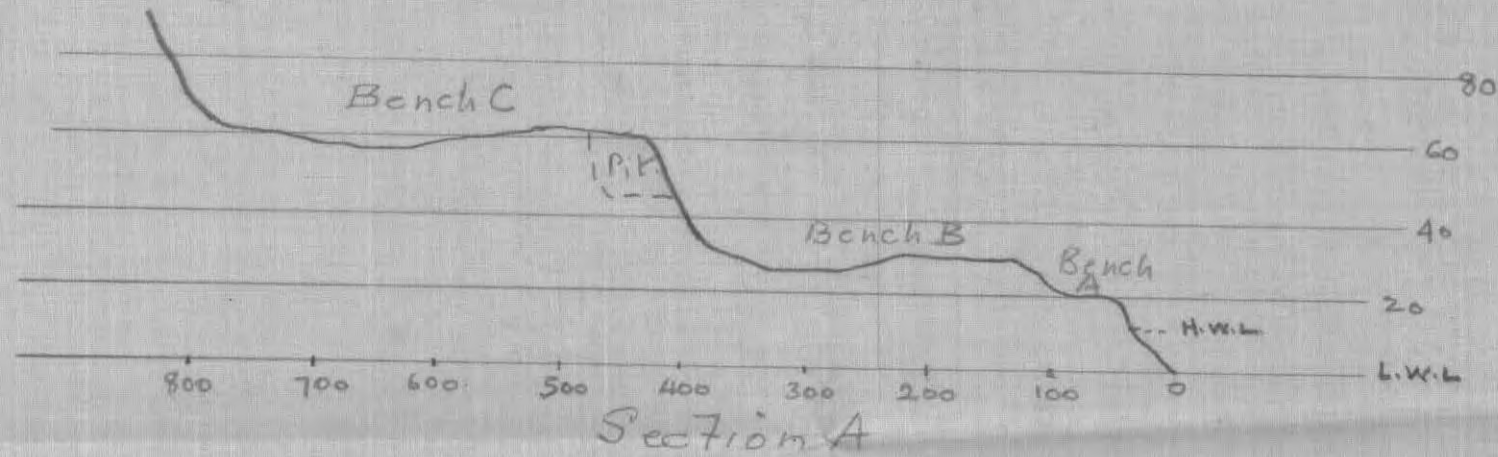


D. B. WOILSEN  
LEASES.  
Map by A. F. Peers.



Scales: - Hor. 1" = 150'  
Vert. 1" = 50'

Peers's figures:-  
3200 oz gold (75% Franklin)  
fineness within a point of 875  
with gold @ \$350 - \$3062 per oz  
exclusive of silver which averages  
9.5% of weight.

Customary saving  
Blanket, cocoa mat,  
or similar material  
under expanded metal  
laid in a short wide  
sluice box, at slope 1 in 8 to 1 in 5

areas of benches within  
leases:-

A	14.0 ac	dept 10'	226,000
B	11.6 ac	12'	224,000
C L 6170	14.6 ac	net 17'	400,000
C L 82	22.6 ac	net 17'	728,000
			<u>1,578,000</u>

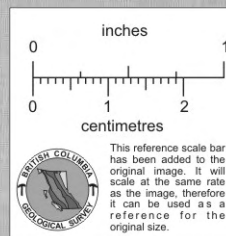
Bench D not included

Jigs recommended:  
Pan-American Engineering Co.  
820 Parker Street,  
Berkeley  
California.

Jan 5/38

936061  
PROPERTY FILE

93610E



014700