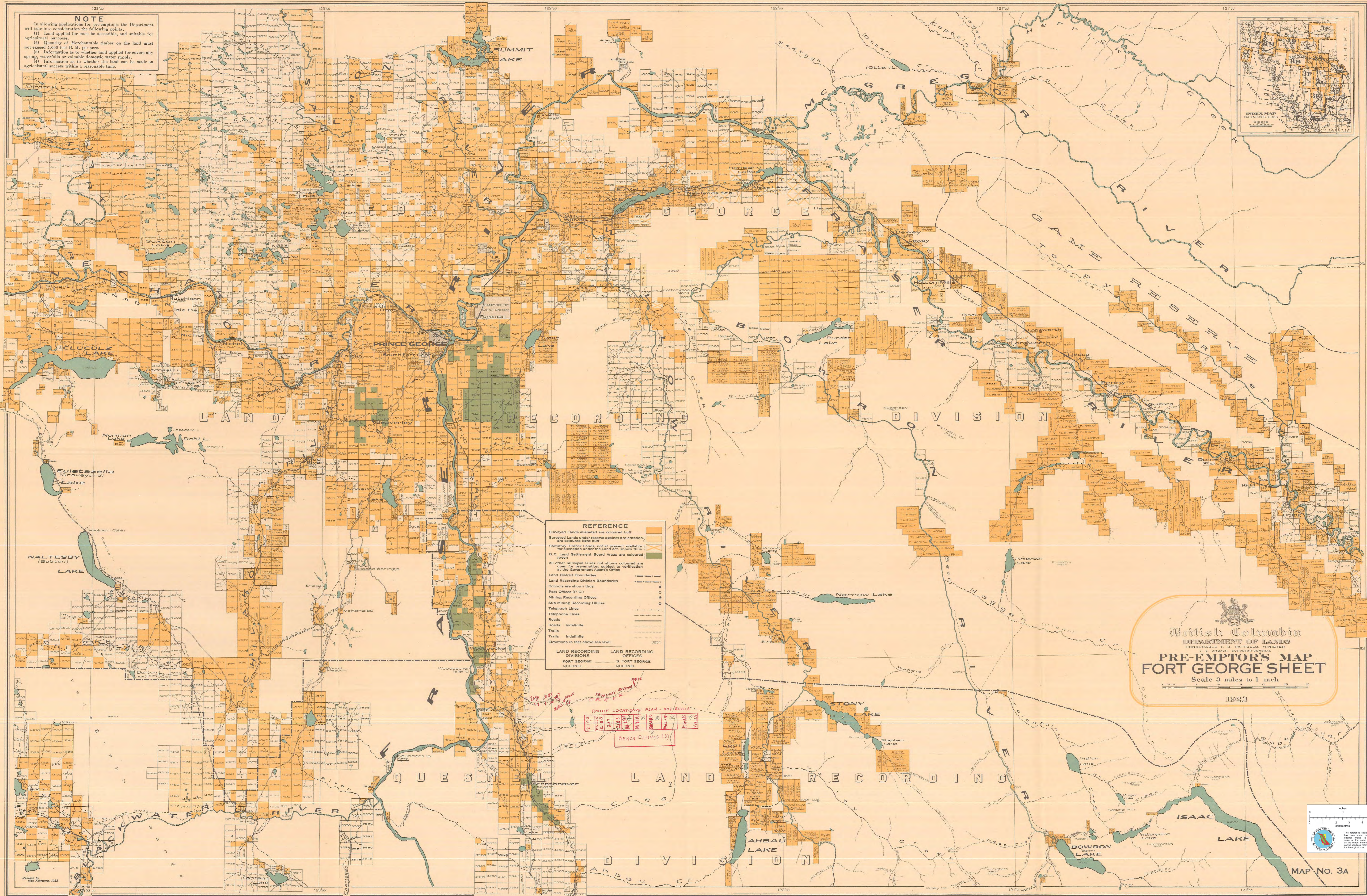
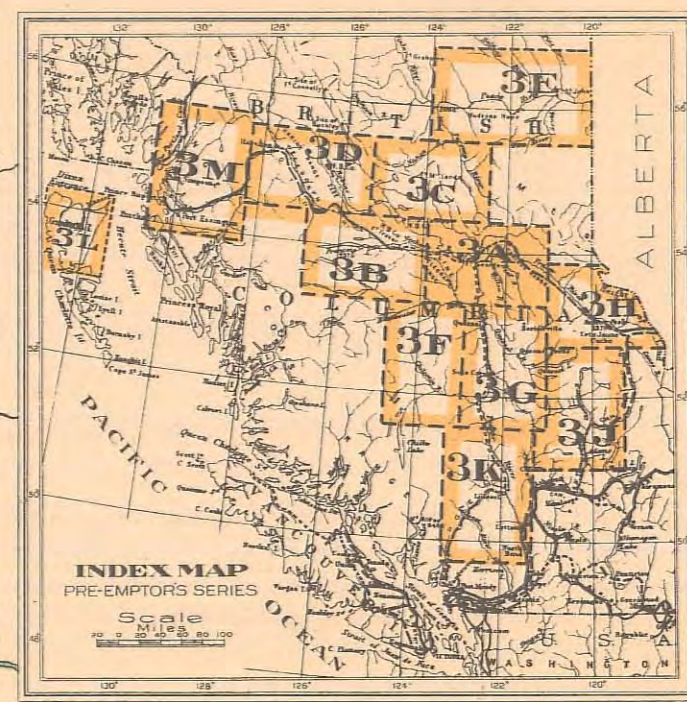


NOTE
 In allowing applications for pre-emptions the Department will take into consideration the following points:
 (1) Land applied for must be accessible, and suitable for agricultural purposes.
 (2) Quantity of Merchantable timber on the land must not exceed 5,000 feet B. M. per acre.
 (3) Information as to whether land applied for covers any spring, waterfalls or valuable domestic water supply.
 (4) Information as to whether the land can be made an agricultural success within a reasonable time.



REFERENCE

- Surveyed Lands alienated are coloured buff
- Surveyed Lands under reserve against pre-emption are coloured light buff
- Statutory Timber Lands, not at present available for alienation under the Land Act, shown thus
- B.C. Land Settlement Board Areas are coloured green
- All other surveyed lands not shown coloured are open for pre-emption, subject to verification at the Government Agent's Office
- Land District Boundaries
- Land Recording Division Boundaries
- Schools are shown thus
- Post Offices (P.O.)
- Mining Recording Offices
- Sub-Mining Recording Offices
- Telegraph Lines
- Telephone Lines
- Roads
- Roads Indefinite
- Trails
- Trails Indefinite
- Elevations in feet above sea level

LAND RECORDING DIVISIONS	LAND RECORDING DIVISIONS
FORT GEORGE	S. FORT GEORGE
QUEENSLAND	QUEENSLAND

ROUGH LOCATIONAL PLAN - NOT SCALE

2110
2115
2120
2125
2130
2135
2140
2145
2150
2155
2160
2165
2170
2175
2180
2185
2190
2195
2200
2205
2210
2215
2220
2225
2230
2235
2240
2245
2250
2255
2260
2265
2270
2275
2280
2285
2290
2295
2300

PROPERTY OWNERS

BENCH CLAIMS (3)

British Columbia
 DEPARTMENT OF LANDS
 HONOURABLE T. D. PATULLO, MINISTER
 J. E. UMBACH, SURVEYOR GENERAL

PRE-EMPTOR'S MAP
FORT GEORGE SHEET

Scale 3 miles to 1 inch

1923

