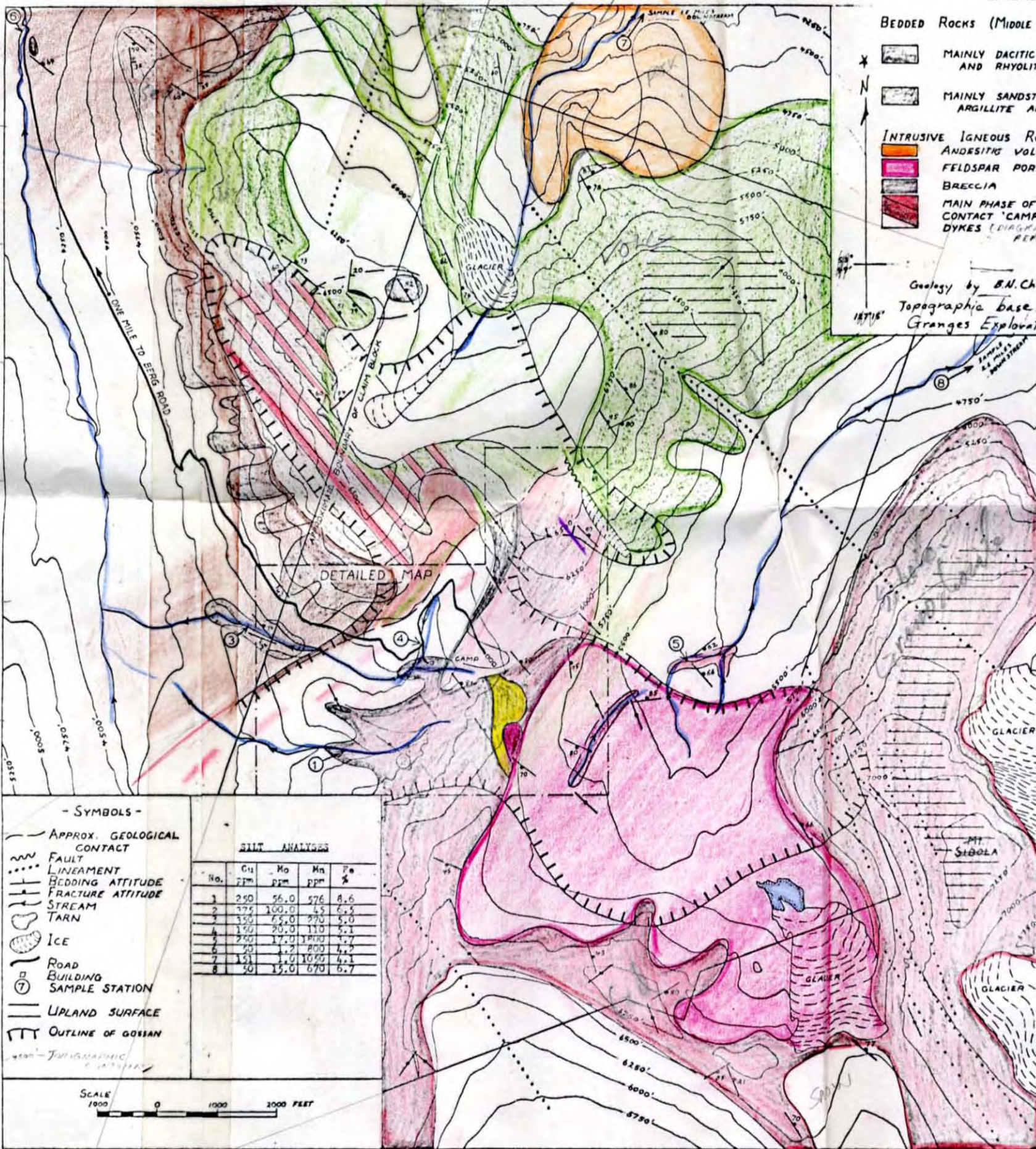


# GEOLOGY OF THE BERGETTE COPPER - MOLYBDENUM PROSPECT

- LEGEND -

- BEDDED ROCKS (MIDDLE MESOZOIC)**
- MAINLY DACITIC ANDESITE AND RHYOLITE
  - MAINLY SANDSTONE SILICEOUS ARGILLITE AND SHALE
- INTRUSIVE IGNEOUS ROCKS**
- ANDESITIC VOLCANIC NECK?
  - FELDSPAR PORPHYRY
  - BRECCIA
  - MAIN PHASE OF SIBOLA STOCK CONTACT 'CAMP' PHASE DYKES (DIAGNOSTIC REPRESENTATIVE)

Geology by B.N. Church 1972  
 Topographic base provided by  
 Granges Exploration AB



- SYMBOLS -

- APPROX. GEOLOGICAL CONTACT
- FAULT
- LINEAMENT
- BEDDING ATTITUDE
- FRACTURE ATTITUDE
- STREAM
- TARN
- ICE
- ROAD
- BUILDING
- SAMPLE STATION
- UPLAND SURFACE
- OUTLINE OF GOSSAN

**SILT ANALYSES**

No.	Cu ppm	Mo ppm	Mn ppm	Pb %
1	250	56.0	576	8.6
2	375	100.0	45	6.5
3	350	65.0	370	5.0
4	150	20.0	110	2.1
5	250	17.0	1800	2.7
6	50	1.2	800	1.2
7	150	1.0	1050	4.2
8	50	15.0	670	6.7

SCALE 1000 0 1000 2000 FEET

**PROPERTY FILE**

93E052-06

014470

