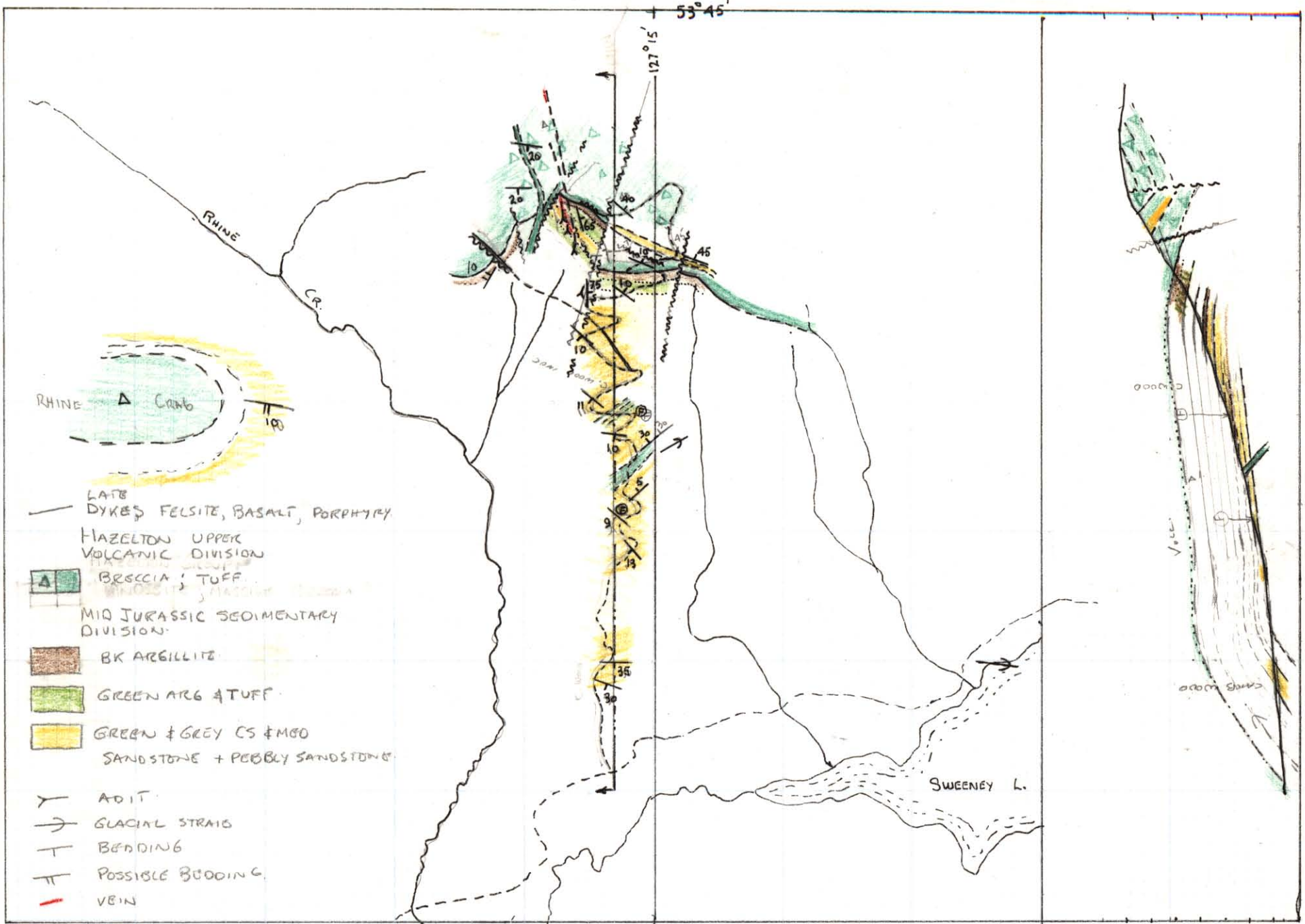


53° 45'

127° 15'

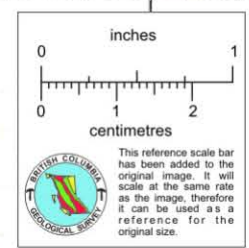


- LATE DYKES, FELSITE, BASALT, PORPHYRY
- HAZELTON UPPER VOLCANIC DIVISION
- ▲ BRECCIA; TUFF
- MID JURASSIC SEDIMENTARY DIVISION
- BK ARGILLITE
- GREEN ARG & TUFF
- GREEN & GREY CS & MGO SANDSTONE + PEBBLY SANDSTONE
- Y ADIT
- GLACIAL STRIAE
- T BEDDING
- ⊥ POSSIBLE BEDDING
- VEIN

GEOLOGY NEAR EMERALD GLACIER MARGES
 JULY 1967
W. Sutherland

SCALE 2" = 1 MILE
 0 5000 FEET

938001
PROPERTY FILE



6500
 6000
 5000
 4000
 3000

014304