

014279

January 26, 1976

Bethlehem Copper Corporation
Suite 2100 Guinness Tower
1055 West Hastings St.
Vancouver, B.C.
V6E 2H8

Dear Sirs:

Re: TX 9, 10, SUS 7-17, 20-27, 32-44 mineral claims, Omineca Mining Division, HC 3-7, 36-38, 33, 48 mineral claims, Nicola Mining Division; B 13 Fr., 19-26, Y 3-6, 13-16, 31-34, 149, 150, MAP 3-16 mineral claims, Kamloops Mining Division.

Thank you for your letter dated January 21, 1976, and the information submitted pursuant to Section 52 of the Mineral Act with respect to the above noted mineral claims.

Enclosed please find duplicate copies as requested.

Yours very truly,

R. Rutherford
Deputy Chief Gold Commissioner

bmh
Enclosure

BETHLEHEM COPPER CORPORATION

Suite 2100 Guinness Tower, 1055 West Hastings Street, Vancouver, B.C. V6E 2H8

Telephone 682-5211

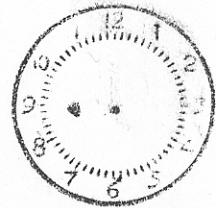
Telex 04-507589

January 21, 1976

JAN 23 '76 AM

Mineral Resources Branch
 Department of Mines and Petroleum Resources
 Parliament Buildings
 Victoria, B.C.
 V8V 1X4

1017



DEPT. OF MINES
 AND PETROLEUM RESOURCES

Dear Sirs:

Re: Forfeiture of Mineral Claims
- 4th Quarter 1975

We hereby submit in duplicate seven (7) Notices of Forfeiture listing those mineral claims owned by Bethlehem Copper Corporation that expired during the fourth quarter of 1975.

Kindly return a stamped copy as acknowledgement of receipt of the aforementioned information.

Yours very truly,

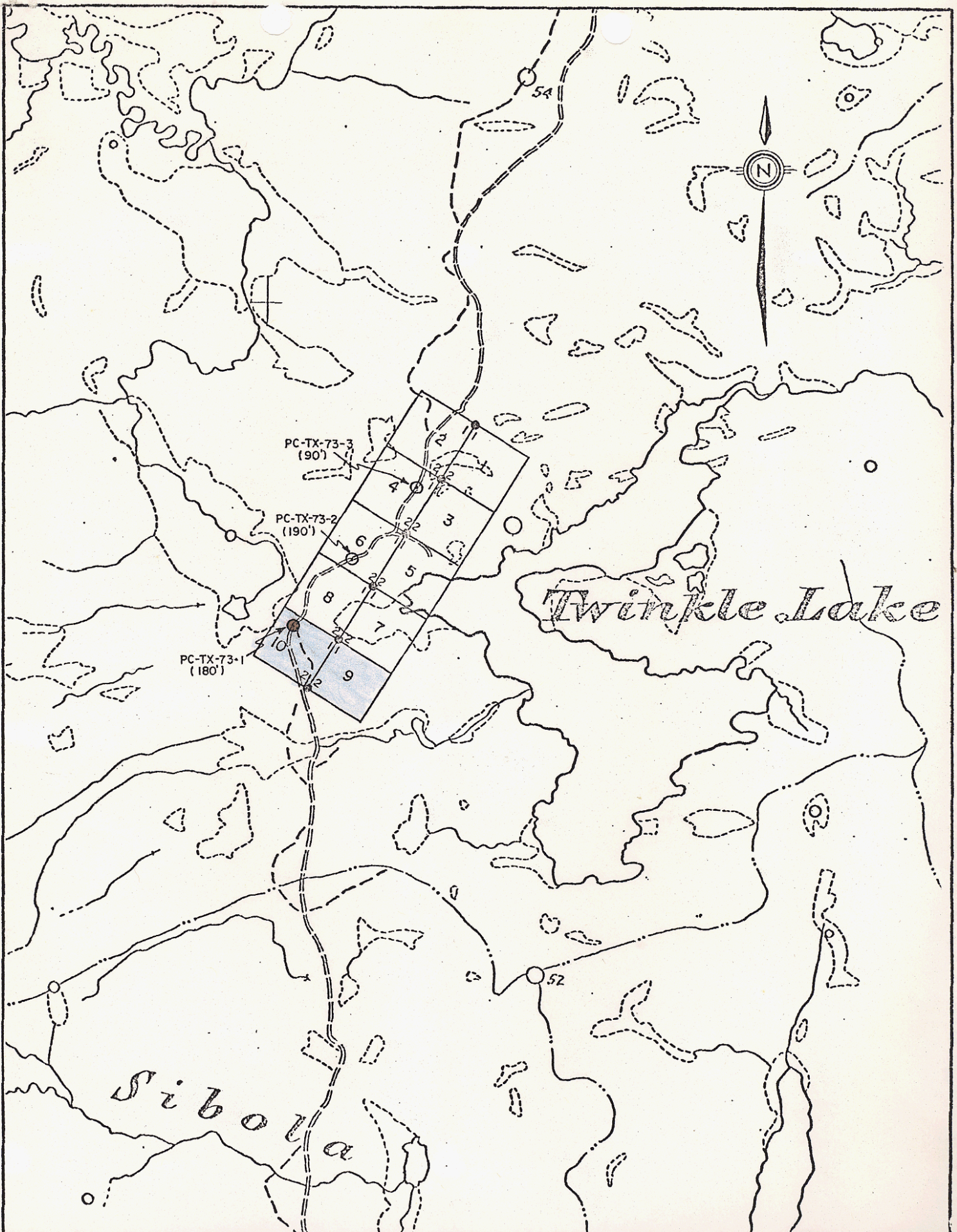
BETHLEHEM COPPER CORPORATION


Per: E. Andersen
 Property Agent

EA:ns
 Encls.

REFERRED TO	DATE	INITIAL
D.M.		
ADM (M)		
ADM (P)		
C.G.C.		
C.P.R.		
D.C.C.		
ACPR		
G.C.		
ACCTS.		
G.E.L.		
INSP.		
M. REV.		
EC & P.		
FILE NO.		
FILING CLERK		

Handwritten notes in table:
 - Under EC & P.: *20/1 B.H.*
 - Under D.C.C.: *20/1*
 - Under C.P.R.: *20/1*



DATE REVISED	BY	DEPT. - EXPLORATION	 Bethlehem Copper <small>INCORPORATED IN CANADA</small> <small>VANCOUVER BRITISH COLUMBIA</small>	TITLE -	TX CLAIMS	
		DRAWN BY -		FILE NUMBER -	DRAWING NUMBER -	
		CHECKED - E.A.		N.T.S. 93E/14E		
		APPROVED -				
		DATE - DEC. 1973				
		SCALE - 1" = 1/2 mile				

FORFEITURE OF MINERAL CLAIMS

DETAILS OF EXPLORATION AND DEVELOPMENT WORK ON FORFEITED MINERAL CLAIMS

(to be submitted within 90 days of forfeiture pursuant to Subsection 2(b)
of Section 52 of the B.C. Mineral Act)

TO: B.C. MINISTER OF MINES

NAMES OF CLAIMS FORFEITED (Rec. Nos.): SUS 7-17; 20-27; 32-44

Record Nos. 129881R to 129891R

129894R to 129901R.

129906R to 129918R

MINING DIVISION: Omineca

LOCATION OF CLAIMS: NTS 93 E/11E. 3 kilometres NE of Sweeney

Lake and 84 kilometres S24°W of Houston.

DATE CLAIMS EXPIRED: Dec. 3, 1975; Recorded Dec. 3, 1973

EXPLORATION WORK ON FORFEITED MINERAL CLAIMS
FOR THE YEAR PRECEDING THE DATE OF EXPIRY

COST

Percussion drilling.

(1) Hole No. SUS 74-4 (SUS 24 M.C.)

0-20' Overburden; 20'-260' Rock

Total Depth - 260'

\$1817.40

(2) Hole No. SUS 74-5 (SUS 9 M.C.)

0-60' Overburden; 60'-330' Rock

Total Depth - 330'

\$2306.70

Average cost per foot - \$6.99

For details of drilling see attached drill hole logs.

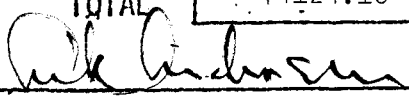
Assessment report on the above-noted drilling entitled

"Percussion Drilling Report" by R. E. Anderson, P.Eng.

dated Dec. 3, 1974 was filed under Mining Receipt No. 96316E.

TOTAL

\$4124.10

Signature 

Name (print) ERIK ANDERSEN

Agent for: BETHLEHEM COPPER CORPORATION

DATE January 21, 1976

DRILL HOLE LOG

BETHLEHEM COPPER CORPORATION LTD.

SHEET No. 1

Property	COPPER BELT-SMITHERS	Hole No.	SUS-74-4	Bearing		Elevation	3450'	Logged by						S. Marr	
District	Omineca M.D.	Length	260'	Dip	Vertical	Overburden	20'	Date						25th November 1974	
Commenced	Sept. 15, 1974	Latitude		Hor. Comp.		Recovery									
Completed	Sept. 15, 1974	Departure		Vert. Comp.		Purpose									
DESCRIPTION				SULPHIDES	OXIDES	OTHERS	FROM	TO	SAMPLE No.	% Cu.	% Mo.	Oz. Au.	Oz. Ag.	% RECOY	
Chips very variable; appear to be of sedimentary origin and have been weakly metamorphosed. A few show brecciation. Chips are light to dark grey in colour and fresh to weakly altered. Pyrite disseminated and in clusters.				Py			20	30		.008					
Similar to above. Dark grey chips probably argillitic. Lighter grey chips show weak sericitization. Variety of chips suggests a sequence of thin beds. Very silicic in parts.				Py and some po			30	40		.006					
Chips highly variable--argillitic type absent. More coarsely crystalline. Some very silicious chips resembling chert. Some chips very chloritic--of igneous origin?				Py and some po			40	50		.007					
Mainly sediments. Generally silicified. Chloritic chips are either a strongly altered intrusive or a breccia. Several of these chips appear to contain fragments.				Some Py			50	60		.008					
All types of chips present. One chip shows fine bedding --tuff (or chert). There are also some dark red chips which could be volcanic. Silicified.				Rare py			60	70		.009					
As 60-70				Some py rare po			70	80		.009					
Mainly mixed seds as above				Some py rare po			80	90		.008					
Chips very variable--greywacke?--mainly sedimentary but some of the strongly chloritic ones could be of igneous origin.				Py Po Rare cpy			90	100		.009					
Mainly sediments--impure quartzites, finely bedded cherts (or tuffs) Other major type present looks like a breccia (chloritized and sericitized). The few dark red chips could be volcanoclastic.				Some py Minor Po			100	110		.007					
Approximately 70% chips are quartzite. Otherwise as above. Breccia type chips altered and sometimes bleached.				Minor py Rare po			110	120		.008					
Chips very fine. Appear to be similar to above.				Py and some po			120	130		.007					

DRILL HOLE LOG

BETHLEHEM COPPER CORPORATION LTD.

SHEET No. 2

Property COPPER BELT-SMITHERS Hole No. SUS-74-4

Logged by S. Marr

Date 25th November 1974

DESCRIPTION	SULPHIDES	OXIDES	OTHERS	FROM	TO	SAMPLE No.	% Cu.	% Mo.	Oz. Au.	Oz. Ag.	REC'D	RECOV.
Mainly composed of breccia type chips but a few of the other rock types seen above are also present.	Some py and po			130	140		.008					
Mixture of altered breccia and impure quartzite plus several dark red volcanoclastics? These often show layering.	"			140	150		.006					
Chips very fine. The few larger ones are similar to above types.	"			150	160		.008					
Chips coarse. Rock types similar to 150-160.	"			160	170		.007					
As 160-170 but quartzite very minor.	"			170	180		.006					
Similar to above. A few cherty chips.	"			180	190		.006					
Similar to 180-90	"			190	200		.006					
Similar to 190-200	"			200	210		.007					
Chips very fine. A few coarser ones are similar to above.	"			210	220		.005					
All chips fine.	"			220	230		.006					
Similar to 210-20	"			230	240		.008					
Fewer reddish chips but similar to above.	"			240	250		.008					
Similar to above.	"			250	260	EOH	.008					

DRILL HOLE LOG

BETHLEHEM COPPER CORPORATION LTD.

SHEET No. 1

Property	COPPER BELT-SMITHERS	Hole No.	SUS 74-5	Bearing		Elevation	3330'	Logged by	S. Marr
District	Omineca M.D.	Length	330'	Dip	Vertical	Overburden	60'	Date	26th November 1974
Commenced	Sept. 20, 1974	Latitude		Hor. Comp.		Recovery			
Completed	Sept. 20, 1974	Departure		Vert. Comp.		Purpose			

DESCRIPTION	SULPHIDES	OXIDES	OTHERS	FROM	TO	SAMPLE No.	% Cu.	% Mo.	Oz Au.	Oz Ag.	% RECOV.
Fine-grained fairly fresh-looking sediments; light to dark grey; some variation in grain-size and texture. Probably quartzites and argillaceous quartzites.	Rare py and po			60	70		.004				
Some chips similar to above. Rest composed of bleached sericitized breccia, siltstone and banded argillaceous quartzites.	Some py Speck cpy			70	80		.004				
60% chips, light grey quartzite. Rest vary in colour and texture through to dark argillite. Occasional breccia chips. Fine banding present in several chips.	Some py			80	90		.003				
Similar to 80-90. Some of the quartzose chips very cherty looking.	Py and occas. po.			90	100		.003				
Mainly quartzites of very light-medium grey. Occasional argillaceous chip.	Some py Minor po			100	110		.002				
Some quartzite chips but mainly argillitic types, some of which show weak metamorphic effects.	"			110	120		.003				
A few light grey quartzite chips, but mainly argillaceous quartzites or quartzose argillites (mottled). Some weak sericitization.	Minor py			120	130		.003				
A few quartzites and argillites and remainder mottled as above.	Minor py and po			130	140		.003				
Similar to 130-140. Some chips silicified.	Minor py and po			140	150		.003				
A few quartzites and some argillites. Remainder mottled as above and a few with coarser grains and small fragments in a dark matrix--greywacke? Dark grey in colour.	"			150	160		.002				

DRILL HOLE LOG

BETHLEHEM COPPER CORPORATION LTD.

SHEET No. 2

Property COPPER BELT-SMITHERS		Hole No. SUS 74-5		Logged by S. Marr		Date 26th November 1974							
DESCRIPTION	SULPHIDES	OXIDES	OTHERS	FROM	TO	SAMPLE No.	% Cu.	% Mo.	Oz Au.	Oz Ag.		RECOV.	
All gradations of sediments present from fine grain to coarse grit (sometimes with small rock fragments); vary from quartzose to argillaceous.	Minor py and po			160	170		.002						
Mainly argillaceous with a few quartzose and gritty chips.	"			170	180		.013						
Chips very fine.				180	190		.002						
Similar to 160-170. Some of the coarser-grained chips show weak chloritization and sericitization.	"			190	200		.002						
Chips fine. Similar to 190-200. Several chips are reddish --caused by hematite staining of above types?	"			200	210		.003						
Chips very fine. Similar to 200-210 but fewer reddish chips present.	"			210	220		.004						
Chips fine. Mixture of reddish coarse grit, argillites, etc.	"			220	230		.005						
Chips fine. Reddish, or green and bleached and contain fragments.	More py and po than above			230	240		.005						
Chips very fine. Similar to 230-40. Spots of epidote.	Some py and po			240	250		.004						
As 240-250	"			250	260		.004						
As 240-260	"			260	270		.004						
Chips very fine.				270	280		.007						

