
NECHAKO PLATEAU EPITHERMAL GOLD PROJECT

The Nechako Plateau area of central British Columbia is host to several epithermal gold and silver mines and prospects. Global Geological Services Inc. has conducted exploration in the region over the past ten years focusing on three highly prospective properties, the Clisbako, Laidman Lake and Holy Cross. Two gold and silver mines operated within the area of interest, Equity Silver and Blackdome, further substantiating the economic potential of this region.

The bulk tonnage precious metal potential of the Nechako region was recognized in the late 1980's with the discovery of epithermal gold within the Ootsa Lake package of Eocene age felsic volcanic rocks at the Clisbako property. Several major mining companies focused their exploration efforts on bulk tonnage gold targets within this underexplored region of the province with remarkable success. The geology of the Nechako region, roughly the size of Nevada, is analogous to Late Tertiary volcanism that produced the large gold deposits of the American Southwest.

Between 1987 and 1997, major companies such as Phelps Dodge, Minnova, Rio Algom and Teck spent approximately seven million dollars on reconnaissance and property exploration in the Nechako region. More than 23 epithermal style gold prospects were identified by this effort. Detailed exploration at three properties resulted in significant zones of gold mineralization at the Wolf (Dawson), Tsacha (Teck) and Clisbako (Goodall) properties. Gold concentrations ranging from 3.3 gpt over 3 metres (Clisbako) to bedrock samples of 19.6 gpt at Laidman Lake and 24 gpt gold at Holy Cross indicate both the bulk tonnage and bonanza grade potential of the prospects.

Epithermal mineralization is well documented throughout the Nechako Plateau, with developed deposits such as the Equity Silver Mine(33.8 million tonnes at 64.9 g/t silver and .46 g/t gold) and the Blackdome Mine(305,614 tonnes at 20.6 g/t gold and 63.9 g/t silver). Premier gold prospects such as Clisbako, Tsacha(478,600 tonnes at 8.72 g/t gold, 82.3 g/t silver) , Wolf, and Capoose (28 million tones at 36 g/t silver and .3 g/t gold) indicate the potential of this underexplored mineralized belt.

The Nechako Plateau area remains a very underexplored region for epithermal gold deposits. The rate of success that previous operators had in the region is a strong indication of the mineral endowment within this geological setting. With continued effort, there is no doubt that additional prospects can be readily identified. Global Geological has acquired three of the most highly prospective and underexplored properties in the region and is seeking to option the properties to interested parties. An exploration program is proposed to delineate the gold mineralization presently identified on each of the properties.

Global Geological Services Inc.

1315 Arborlynn Drive
North Vancouver, B.C., Canada
V7J 2V6

telephone:604-687-2038
fax:604-687-3141
e-mail:goodall@axion.net

PROPERTY SUMMARIES

CLISBAKO

The Clisbako property is located in central British Columbia, 125 kilometres west of Quesnel, BC and is readily accessed by a network of logging roads leading from the village of Nazko. The property was acquired by staking June 25, 2000.

The Clisbako prospect represents a premier high level, low sulphidation epithermal gold mineralized system located in the Nechako Plateau of central British Columbia. Exploration on the prospect was undertaken by 88 Resources, Minnova and Phelps Dodge who identified several zones of intensely silicified, argillically altered felsic volcanics. A high gold value of 9.72 g/t indicates the potential for bonanza grades while intervals of 3.3 g/t over 3.29 metres highlight the disseminated nature of the gold mineralization.

Airborne geophysical surveys, coupled with Landsat imagery, successfully outline the strong structural features of the caldera complex setting. Induced polarization surveys produce distinctive chargeability and resistivity signatures over local structures and assist with drill targets delineation. Shallow drilling has resulted in the identification of intense epithermal style alteration of siliceous breccia within broad zones of argillic clay development at three of the prospects. Classic, highly anomalous concentrations of silver, arsenic, mercury and stibnite generally accompany the gold mineralization.

Previous exploration has concentrated on the three original Clisbako discoveries with highly favourable results. Numerous showings of intensely silicified and brecciated rhyolite have been discovered within a 3 km by 5 km area of epithermal alteration. The potential for discovery of significant gold mineralization within this prospect is considered to be excellent.

A program of detailed grid work, including IP geophysics and mapping, is recommended to prioritize drill targets. An initial 5000 metre drill program is warranted.

LAIMAN GOLD PROSPECT

The Laidman property is an epithermal vein style gold prospect located in central British Columbia. The property is in the Nechako Arch of the Intermontane accretionary terrane near to the east trending Top Lake Lineament. The 700 hectare property covers extensive zones of argillic alteration and quartz stockwork within volcanic and sedimentary rocks of the Jurassic age Hazelton Group rocks near the contact with the Cretaceous age Laidman Lake batholith.

The prospect was discovered in 1994 during a regional reconnaissance program by Cogema Resources Ltd. Subsequent work by Phelps Dodge Corporation of Canada Ltd. between 1995 and 1997 identified several zones of mineralization including the Discovery Zone, the 110 Zone and the West Trench Zone. Highlights of the exploration programs include a zone of quartz veinlets at the Discovery Zone that returned up to 19.6 gpt gold, a partially exposed quartz vein breccia with up to 5,640 ppb gold in soils and 1,440 ppb gold in rock samples and quartz rubble containing up to 8 gpt gold from an area near the center of the property.

Global Geological Services Inc.

1315 Arborlynn Drive
North Vancouver, B.C., Canada
V7J 2V6

telephone:604-687-2038
fax:604-687-3141
e-mail:ggoodall@axion.net

Exploration work conducted on the Laidman property included geological mapping, prospecting, trenching (two trenches totaling 91 metres) and 1004.5 metres of diamond drilling in five holes. Results of this work was sporadic but encouraging, with samples returning 1351 ppb gold and 1152 ppb gold from the West Trench area. The best results from drilling are 643 ppb gold over 4.3 metres in hole DDH97-5 and 116.7 ppb gold over 18 metres in hole DDH 97-4.

Mineralization within the Discovery, 110 and West Trench zones commonly consists of pyrite with rare chalcopyrite in disseminations, clots, fracture fillings and veinlets. Host rocks are typically granite, diorite and monzodiorite with dacitic to rhyolitic dykes. These rocks are argillic and chlorite altered with local sericitization and silicification.

All areas of mineralization identified to date on the Laidman property remain open. Several prospects identified previously remain to be tested. A program of detailed soil geochemistry and Induced Polarization geophysics should be conducted over the known showings to further delineate the zones. Diamond drilling of the key targets is warranted.

HOLY CROSS

The Holy Cross property consists of a single 20 unit, 500 hectare claim located in the Omineca Mining Division of north central British Columbia. It is located approximately 145 kilometres west of Prince George and is readily accessed by a network of forest service roads 33 kilometres south from Fraser Lake.

Noranda Exploration discovered gold mineralization on the Holy Cross prospect in 1987. They identified several areas of silicified quartz vein in a resistant rhyolite dome that returned gold concentrations to 3.5 g/t. To date, four zones of mineralization have been identified within a 3km by 4km area. Trenching has returned broad zones of gold mineralization, including 1.0 g/t over 8.5 metres in Trench 1. Additional sampling by subsequent exploration programs has produced several high concentrations of gold, with a high value of 24.0 g/t gold. These bonanza gold grades, coupled with the bulk tonnage potential make the Holy Cross property an attractive prospect that requires additional exploration. No drill testing has been conducted on the property to test the subsurface extent of mineralization.

A program of prospecting, geological mapping and trenching of mineralized areas is recommended prior to detailed drilling of the prospects.

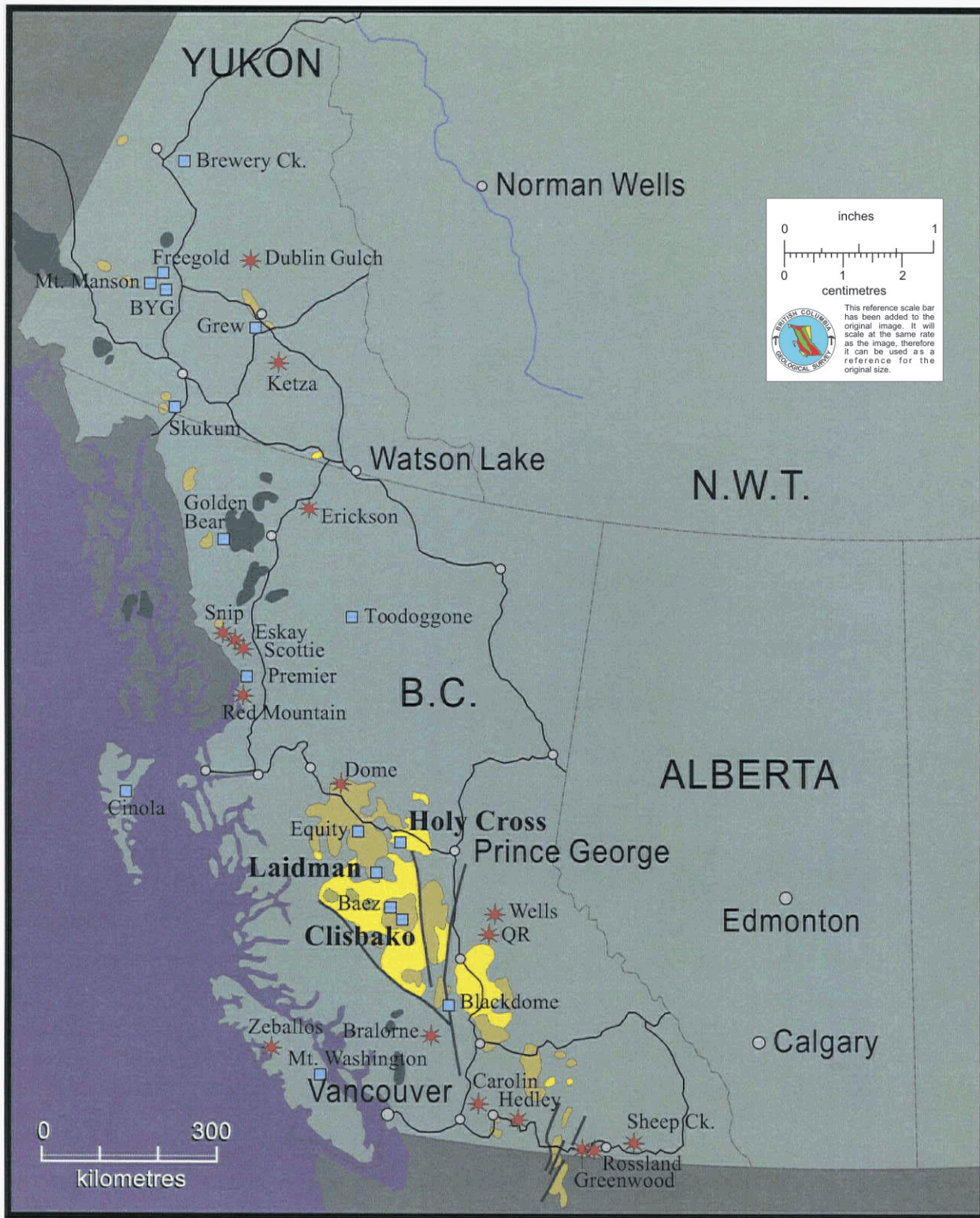
OPTION PROPOSAL





Global Geological is seeking to option these gold prospects to parties interested in their exploration and development. We are seeking standard option arrangements consisting of funding exploration and making cash payments to earn an interest. If you are interested in learning more about these highly prospective epithermal gold properties, please contact us at the number given below.

Global Geological Services Inc.

1315 Arborlynn Drive
North Vancouver, B.C., Canada
V7J 2V6

telephone:604-687-2038
fax:604-687-3141
e-mail:ggoodall@axion.net

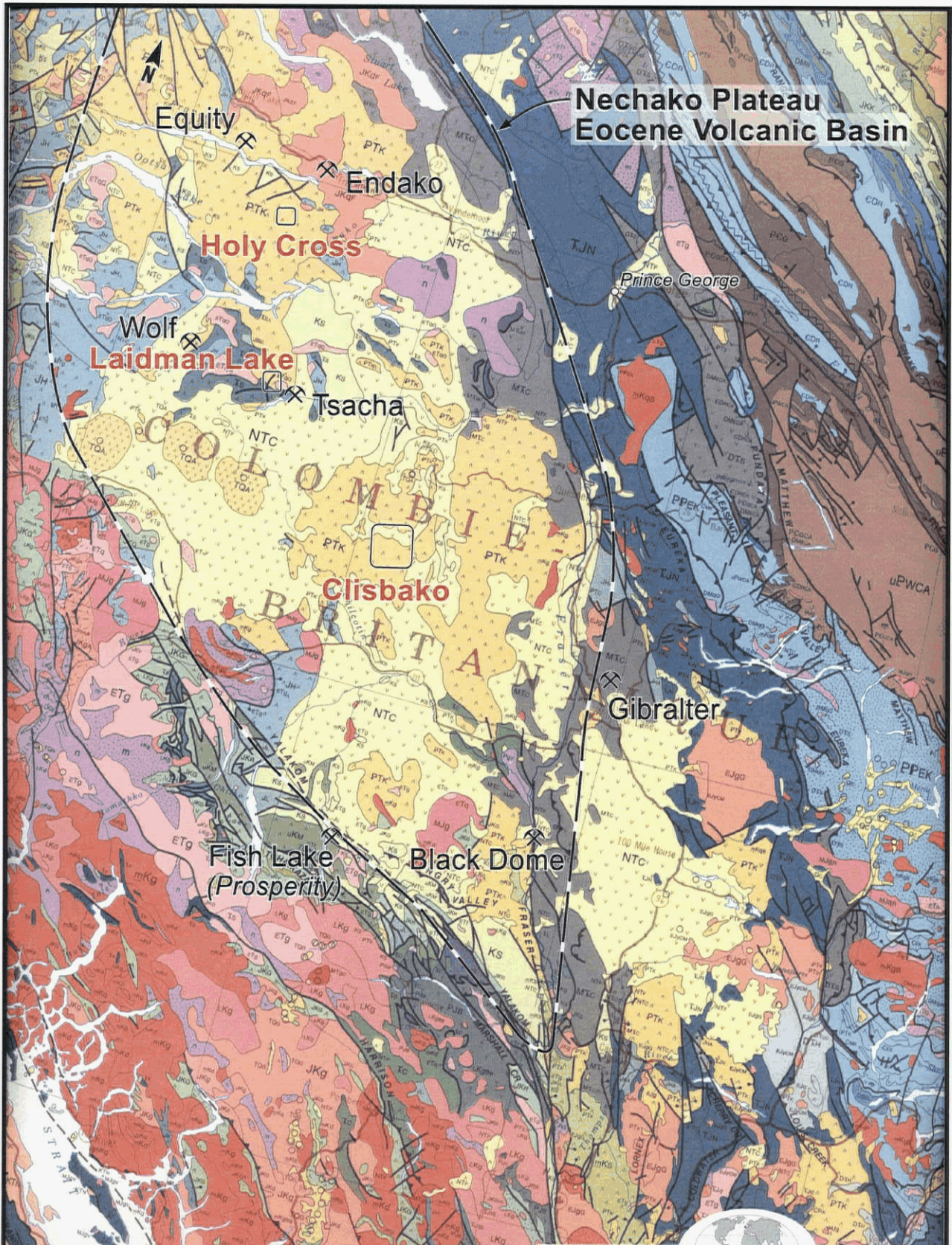


- | | | | |
|---|---|---|------------|
|  | Quaternary Shield Volcanics |  | Epithermal |
|  | Alkalic Shield Volcanics
Oligocene to Recent |  | Other |
|  | Miocene Flood Basalts | | |
|  | Eocene - Transtensional
Arc Volcanics | | |

NECHAKO GOLD PROJECT

Tertiary Volcanics and Gold Deposits





**Nechako Plateau
Eocene Volcanic Basin**

Equity

Endako

Holy Cross

Prince George

Wolf

Laidman Lake

Tsacha

Clisbako

Gibraltar

Fish Lake
(Prosperity)

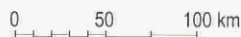
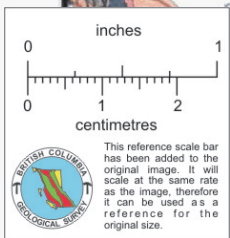
Black Dome

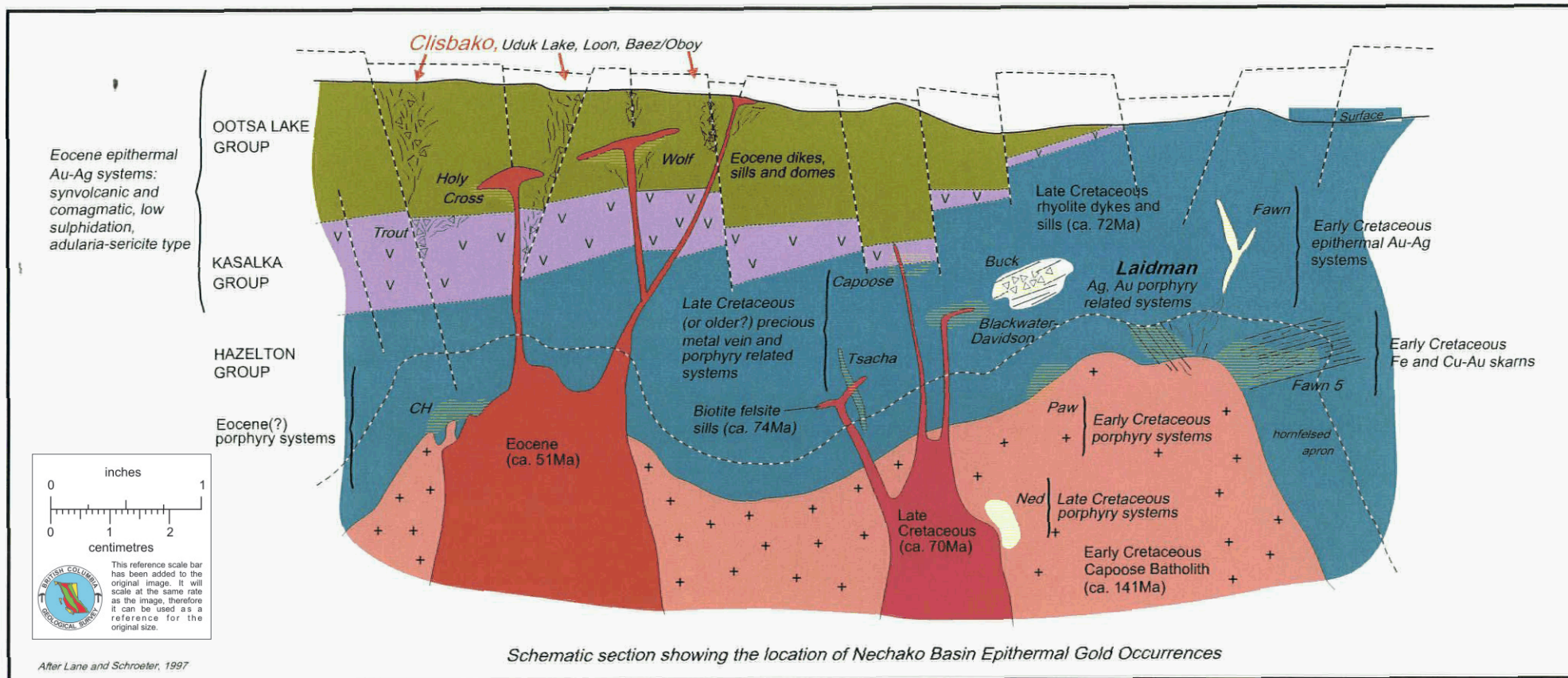


GLOBAL GEOLOGICAL SERVICES INC.

NECHAKO PROJECT

**Regional Geology
and Prospects**

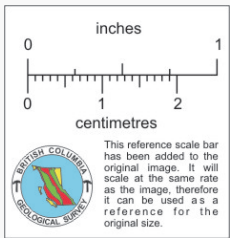
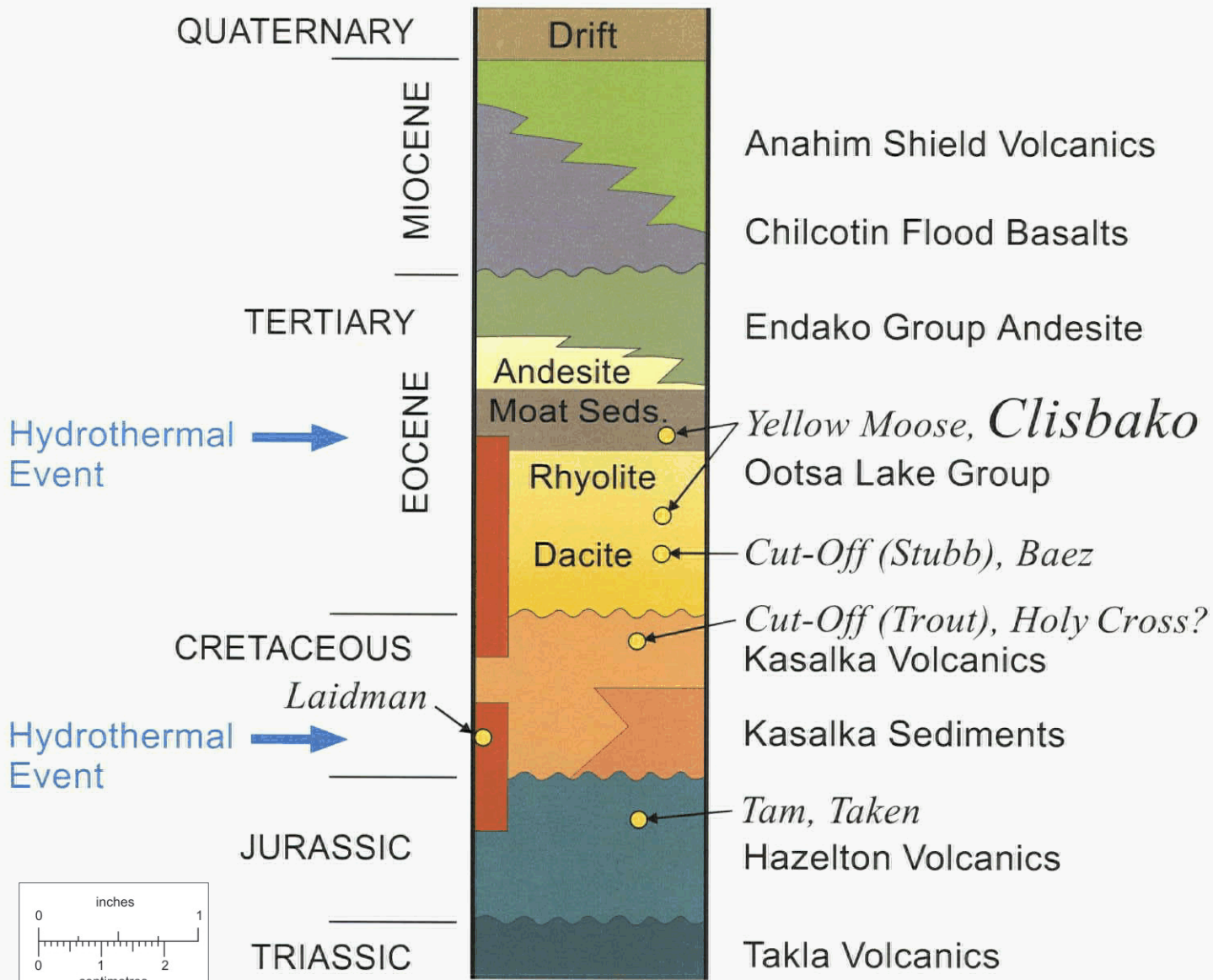




NECHAKO GOLD PROJECT

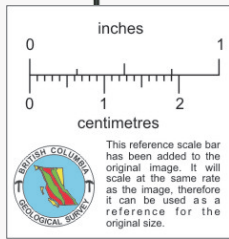
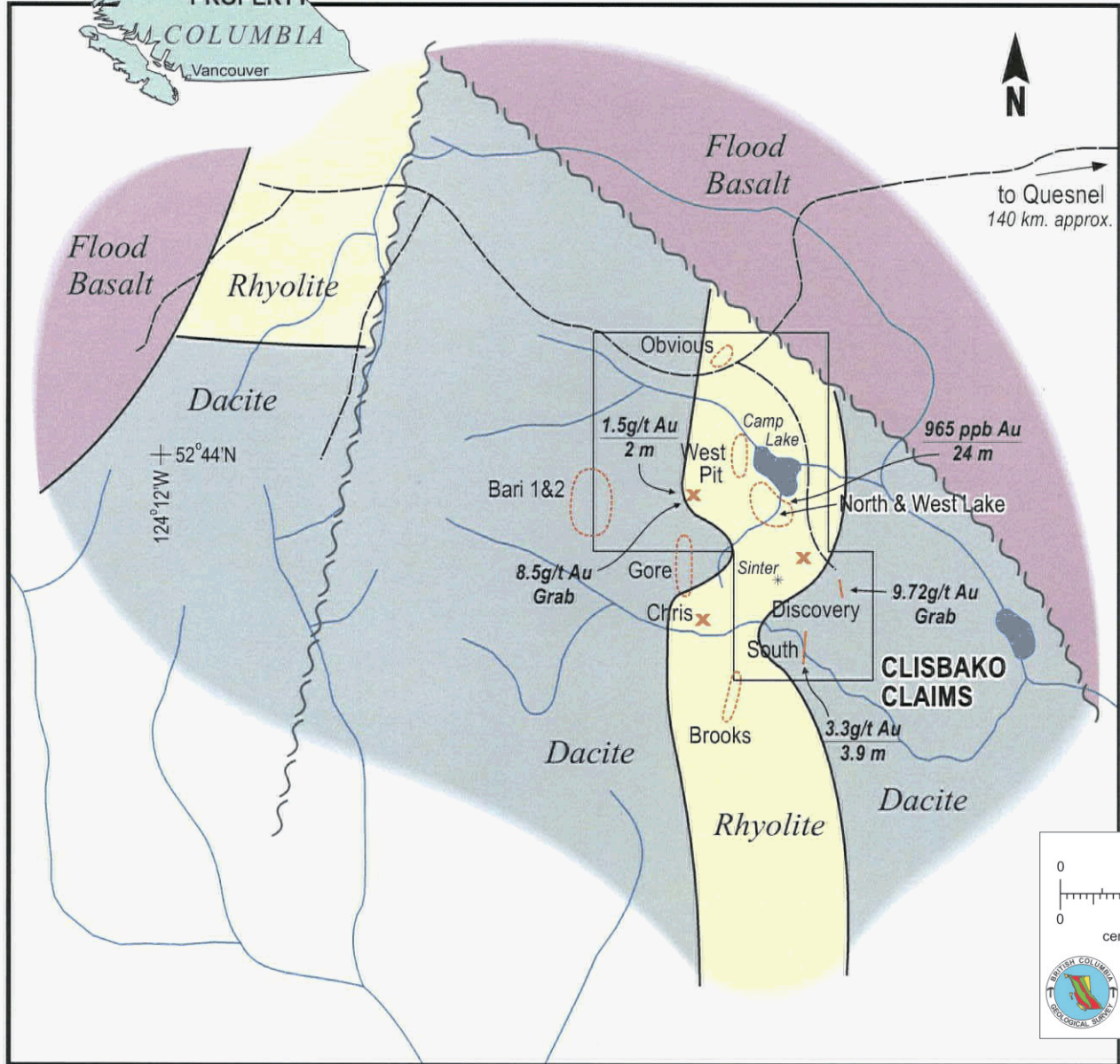
Schematic Section

GLOBAL GEOLOGICAL SERVICES INC.



**CHILCOTIN,
NECHAKO REGION
Stratigraphic Column**





x / ○ Showings



West	- grabs to 1500 ppb
Discovery Area	- grab of 9700 ppb
Bari	- grabs to 450 ppb
South	- 529 ppb over 145.5 m trenching - includes 3329 ppb over 3.9 m
North	- 1560 ppb over 2.0 m drill intersection
Brooks	- grabs to 1100 ppb

CASTLE METALS CORP.

Summary Map

GLOBAL GEOLOGICAL SERVICES INC.



CLISBAKO PROPERTY - SOUTH ZONE

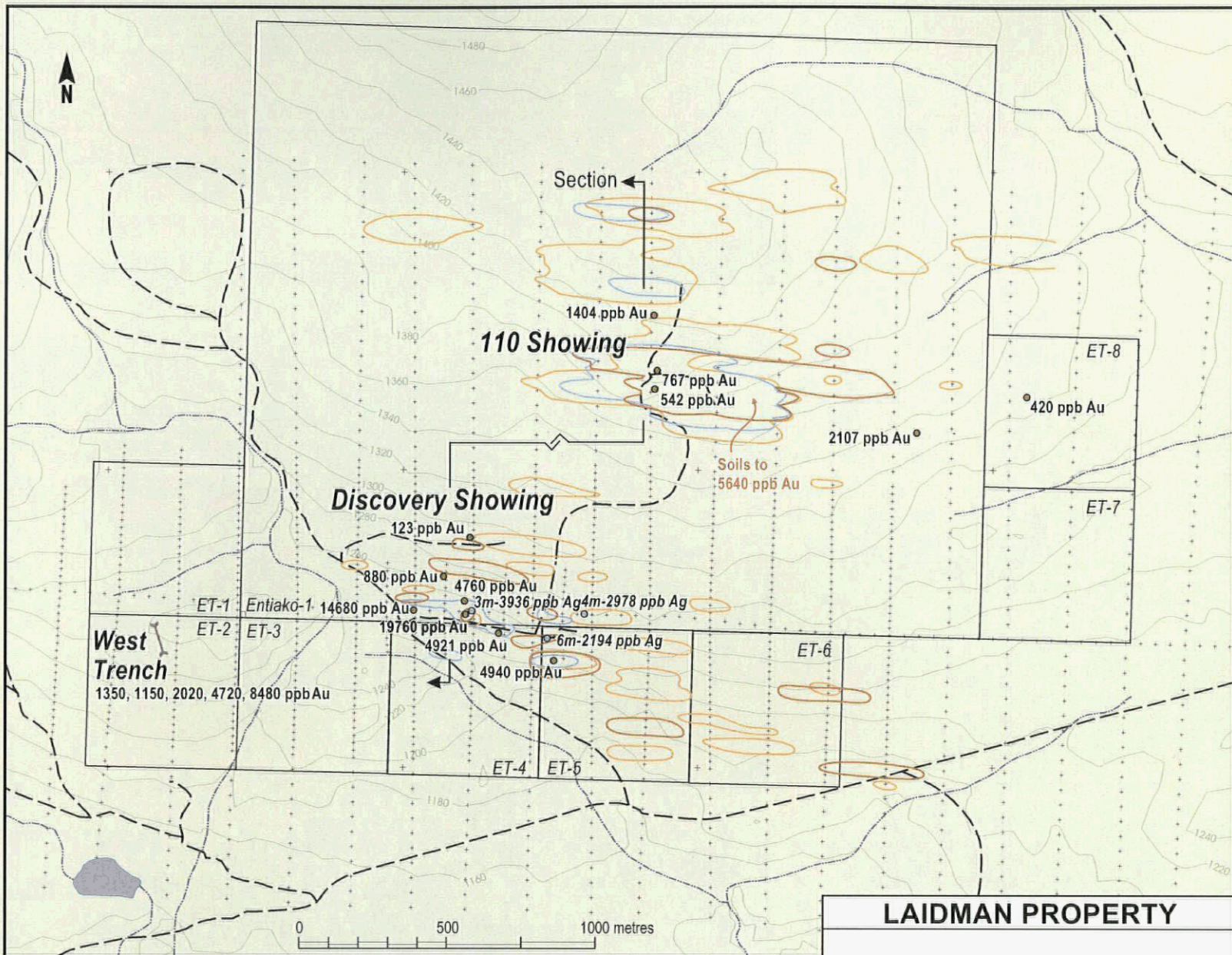
Clisbako - Lake Zone



8.25 g/t Gold



Clisbako - Gore Zone

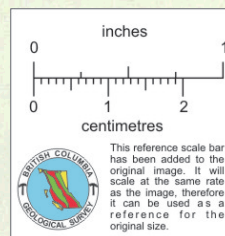


Soil Geochemistry

- Gold >60 ppb
- Silver >1000 ppb
- Arsenic >44 ppm

Rock Geochemistry

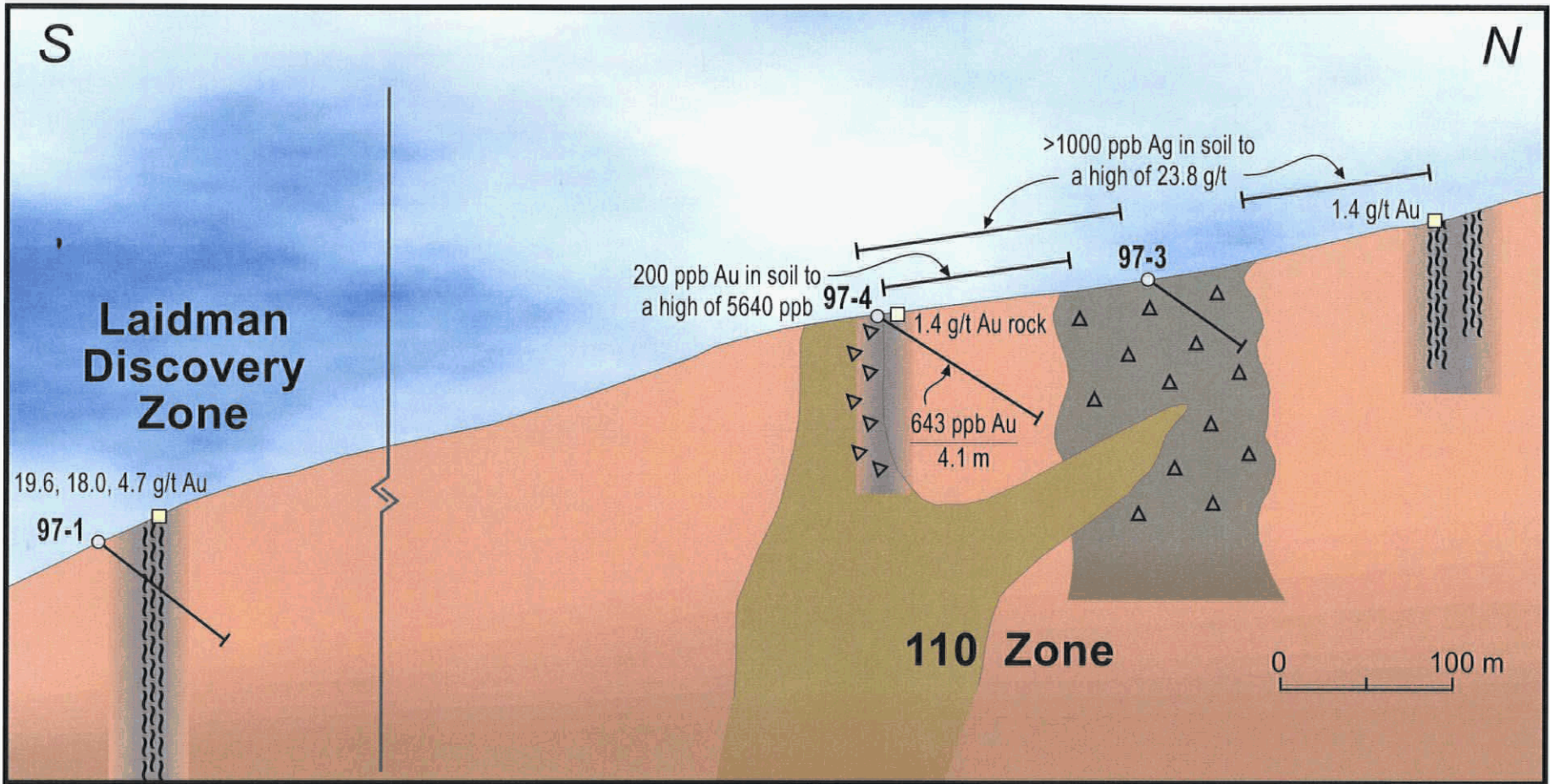
- Rock Sample Location
4940 ppb Au
- Trench Rock Sample Location
4m(length)-2978 ppb Ag



LAIMAN PROPERTY

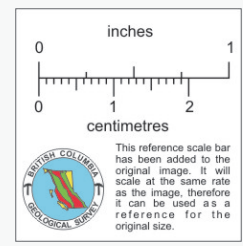
Rock / Soil Geochemistry




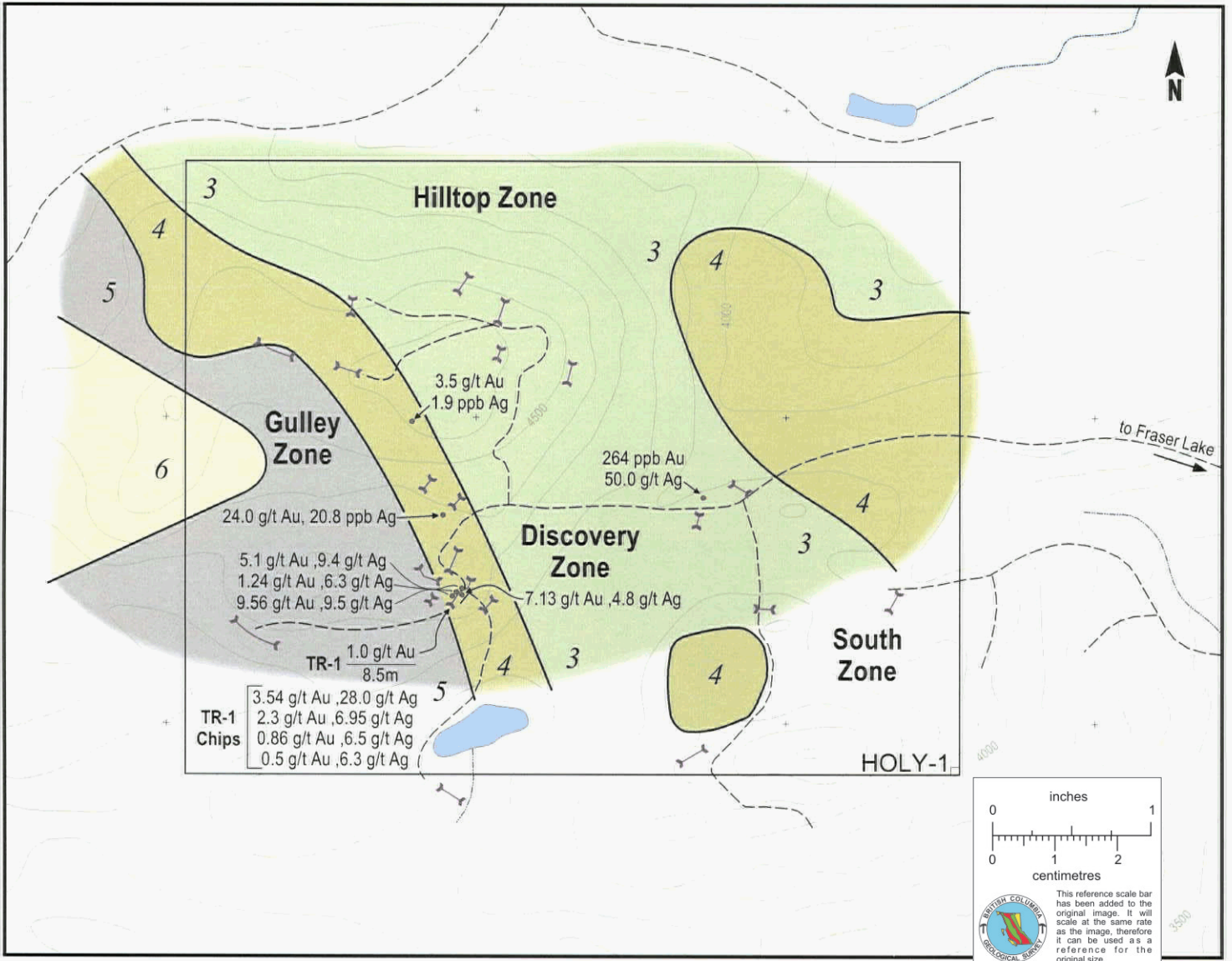


-  Diorite / Monzodiorite Intrusion
-  Heterolithic Intrusion Breccia
-  Granite
-  Quartz Breccia
-  Pyrite / Sericite Alteration

-  Shear
-  Drillhole
-  Rock Sample Location



Laidman Property
Cross-Section
<i>Looking West</i>

GLOBAL GEOLOGICAL SERVICES INC.



This reference scale bar has been added to the original image. It will scale at the same rate as the image, therefore it can be used as a reference for the original size.

- 3 Rhyolite
- 4 Lapilli tuff
- 5 Ash tuff
- 6 Andesite

- Geological Contact
- Trench
- Sample Location
- Topographic Contour (interval: 100 feet)
- Road Access

HOLY CROSS PROPERTY

Compilation Map

GLOBAL GEOLOGICAL SERVICES INC.