

014069

93A/158

Cunningham Creek Baute

NTS 93A/14W.

Longitude 121° 21'

Latitude 52° 56'

- exploration in the Cunningham Creek area dates back to 1937 initially exploration concentrated on searching for local gold deposits

- 1971 Coast Interior Ventures Ltd. - explored for base metals and high grade silver-gold quartz veins.

1976-1978 - RioCanex - detailed exploration for stratabound lead-zinc.

Loki gold. - 1989 completed a prog. of mapping & soil geochem & drilling

- loc - 25 km SE of Wells B.C.  
- access by forestry roads.

### Regional Geol.

- ~~prop occurs~~ region - metaseds of complexly deformed U. Prot to U. Paleoz. age - Omineca Tectonic Belt

- to the west Barkerville Terrane; to the east Caribou Terrane.

### - Property

- units strike northwesterly with steep northeasterly dips.

- faults: strike north to north-east.

- oldest unit

dk siltst, gtzite and sh of Midas Fm.

- Bralec Fm - marble

- youngest: Handseckel Mbr. Fm - blk siltst & arg. phylite  
micaceous gtzite.

- host for the baute.

barite exposed @ 2 localities; approx 5 km apart.

- most northerly exposure is on Cunningham Creek - places operation.

- bed is 0.25-1.0 m th, steeply dipping  
laminated to thin bedded  
v. pale grey to cream.  
- barite is siliceous.

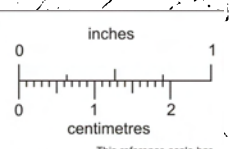
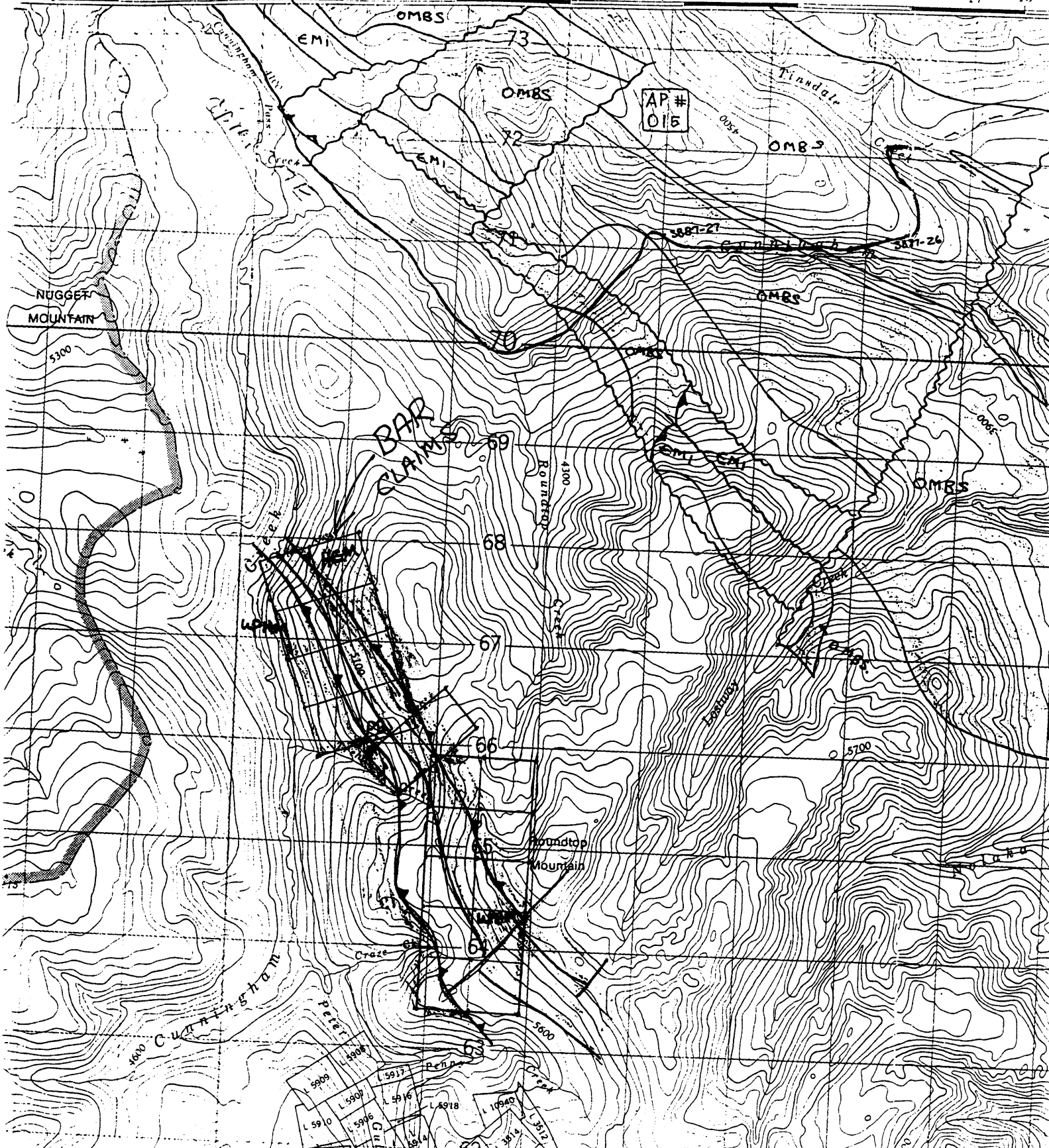
- southerly exposure @ an elev. of ca 6000'

- 2.0-2.5 m thick

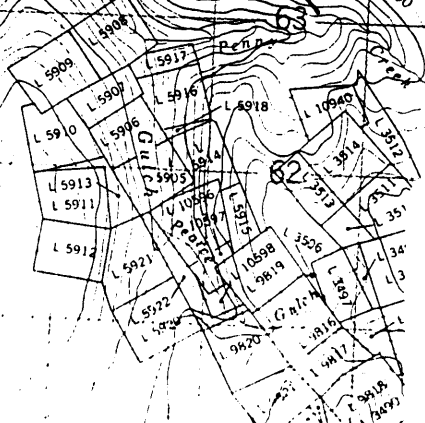
- thick bedded to massive.

- northwest strike; NE dip @  $65^{\circ}$

- v. pale grey to cream coloured.



This reference scale bar has been added to the original image. It will scale at the same rate as the image, therefore it can be used as a reference for the original size.



UPPER PALEOZOIC

**UPH** Hardscrabble Mtn: blk. siltite, phyllite, micaceous qtzite.

**PB** Bralco succession: marble

HADRYANIAN/CAMBRIAN

**HEM** Midas Fm: dk. siltst., qtzite, sh.

20 pages

**GEOLOGICAL REPORT  
ON THE  
CUNNINGHAM CREEK PROPERTY**

**Cariboo Mining Division  
NTS 93A/14W  
Latitude 52°56'  
Longitude 121°21'**

**on behalf of  
LOKI GOLD CORPORATION  
Vancouver, B.C.**

**by  
Neil Humphreys, M.Sc.  
KEEWATIN ENGINEERING INC.  
#800 - 900 West Hastings Street  
Vancouver, B.C.  
V6C 1E5**

April 28, 1989

Keewatin Engineering Inc.

3.6.2 Craze Creek

CLIENT'S COPY

Copy 1 of 1

21 page S

**GEOLOGICAL REPORT  
ON THE  
CRAZE CREEK (CUNNINGHAM) PROPERTY**

**Cariboo Mining Division  
NTS 93A/14W  
Latitude 52°56'  
Longitude 121°21'**

on behalf of

**LOKI GOLD CORPORATION  
Vancouver, B.C.**

by

**Tim J. Termuende, B.Sc.  
KEEWATIN ENGINEERING INC.  
#800 - 900 West Hastings Street  
Vancouver, B.C.  
V6C 1E5**

January 16, 1990

## 8.0 REFERENCES

- Alldrick, D.J. 1983. The Mosquito Creek Mine, Cariboo Gold Belt (93H/4); in Geological Field Work 1982, British Columbia Ministry of Energy, Mines and Petroleum Resources, Paper 1983-1, pp. 99-112.
- Andrew, A., Godwin, C.I. and Sinclair, A.J. 1983. Age and Genesis of Cariboo Gold Mineralization Determined by Isotope Methods (93H); in Geological Fieldwork 1982, British Columbia Ministry of Energy, Mines and Petroleum Resources, Paper 1983-1, pp. 305-313.
- Barr, D.A. 1980. Gold in the Canadian Cordillera, from CIM Bulletin, June 1980, pp. 59-76.
- Burnett, W.B. 1938. Director's Report to Shareholders - Cariboo-Hudson Gold Mines Ltd. July 19, 1938.
- Carlyle, L.W. 1983. GAC Fieldtrip to Mosquito Creek Mine from Field Guides to Geology and Mineral Deposits, Victoria 1983 Annual Meeting, GAC/MAC/CGV.
- Claque, J.J. 1989. Placer Gold in the Cariboo District, British Columbia; in Current Research, Part E, Geological Survey of Canada, Paper 89-1E, pp. 243-250, 1989.
- Delaney, P.R. 1987. Assessment Report #17114 - 1987 Cunningham Creek Property Report. Imperial Metals Corporation.
- Durfield, R.M. 1983. Assessment Report #11831 - Geochemical Report on the Bon 1-4 Mineral Claims.
- Durfield, R.M. 1985. Assessment Report #13550 - Geochemical Report on the Bon Group of Mineral Claims.
- Fraser, J.R. 1978. Assessment Report #7130 - Geology of the Harveys Creek Property.
- Hanson, G. 1935. Barkerville Gold Belt, Cariboo District, British Columbia; Geological Survey of Canada, Memoir 181.
- Holland, S.S. 1948. Report on the Stanley Area; British Columbia Department of Mines, Bulletin 26.
- Holland, S.S. 1954. Geology of Yanks Peak - Roundtop Mountain Area, Cariboo District, British Columbia; British Columbia Department of Mines and Petroleum Resources, Bulletin 34.
- Humphreys, N. 1989. Geological Report on the Cunningham Creek Property on behalf of Loki Gold Corporation.
- Kirwin, G.L. 1971. Report on Property for Coast Interior Ventures Ltd.
- Longe, R.V. and Hodgson, G.D. 1978. Assessment Report #7106 - Barkerville Project 1978, Cunningham Creek claims. *57 pages*
- Mitchell, J.H. 1974. Report on the Mineralization of the Main Vein, R.T. Claims, Copper Creek in the Cariboo Mining Division of B.C.
- Murphy, D.C. and Rees, C.J. 1983. Structural Transition and Stratigraphy in the Cariboo Mountains, British Columbia; in Current Research, Part A, Geological Survey of Canada, Paper 83-1A, pp. 245-252.

- Robert, F. and Taylor, B.E. 1989. Structure and Mineralization at the Mosquito Creek Gold Mine, Cariboo District, B.C. from Short Course #14 - Structural Environments and Gold in the Canadian Cordillera, GAC Cordilleran Section, January 18, 1989.
- Saleleen, L.W. and Simpson, R.G. 1984. Cariboo-Quesnel Gold Belt; A Geologic Overview; in Western Miner, April 1984, pp. 15-20.
- Singhai, G.C. 1980. Report on the 1-15 Park and Tain Mineral Claims, Cunningham Creek Area, Cariboo Mining Division, B.C. for Chaput Logging Ltd., Lumby, B.C.
- Stewart, J.W. 1970. Report on Examination of Mineral Showings on Nugget and Roundtop Mountains.
- Struik, L.C. 1988. Structural Geology of the Cariboo Mining District, East-Central British Columbia. GSC Memoir 421.
- Sutherland Brown, A. 1957. Geology of the Antler Creek Area, Cariboo District, British Columbia; British Columbia Department of Mines and Petroleum Resources, Bulletin 38.
- Sutherland Brown, A. 1963. Geology of the Cariboo River Area, British Columbia; British Columbia Department of Mines and Petroleum Resources, Bulletin 47.
- Timmins, W.G. 1972. Assessment Report #3521. Report on Property for Coast Interior Ventures Ltd.