

93A/14W

013976

SCHEELITE NOTES.

CARIBOO HUDSON OPEN-CUTS.

June. 8 - 42.

LOCATION - (see map)
of open cuts.

Description.

O.C. 1.

10-20% scheelite in qtz vein (strike vein dipping 60° E) - vein varies in width from 1"-10" - it is very tenticular and irregular but continued along width of open cut - 10'

O.C. 2.

The vein in this area was badly broken by bulldozer. Some of the broken pieces fluoresced. would estimate 1% scheelite

O.C. 3.

1% scheelite disseminated in quartz. The quartz is irregular in dimensions and appears to be inter bedded with a limestone member. (may be replacement body).

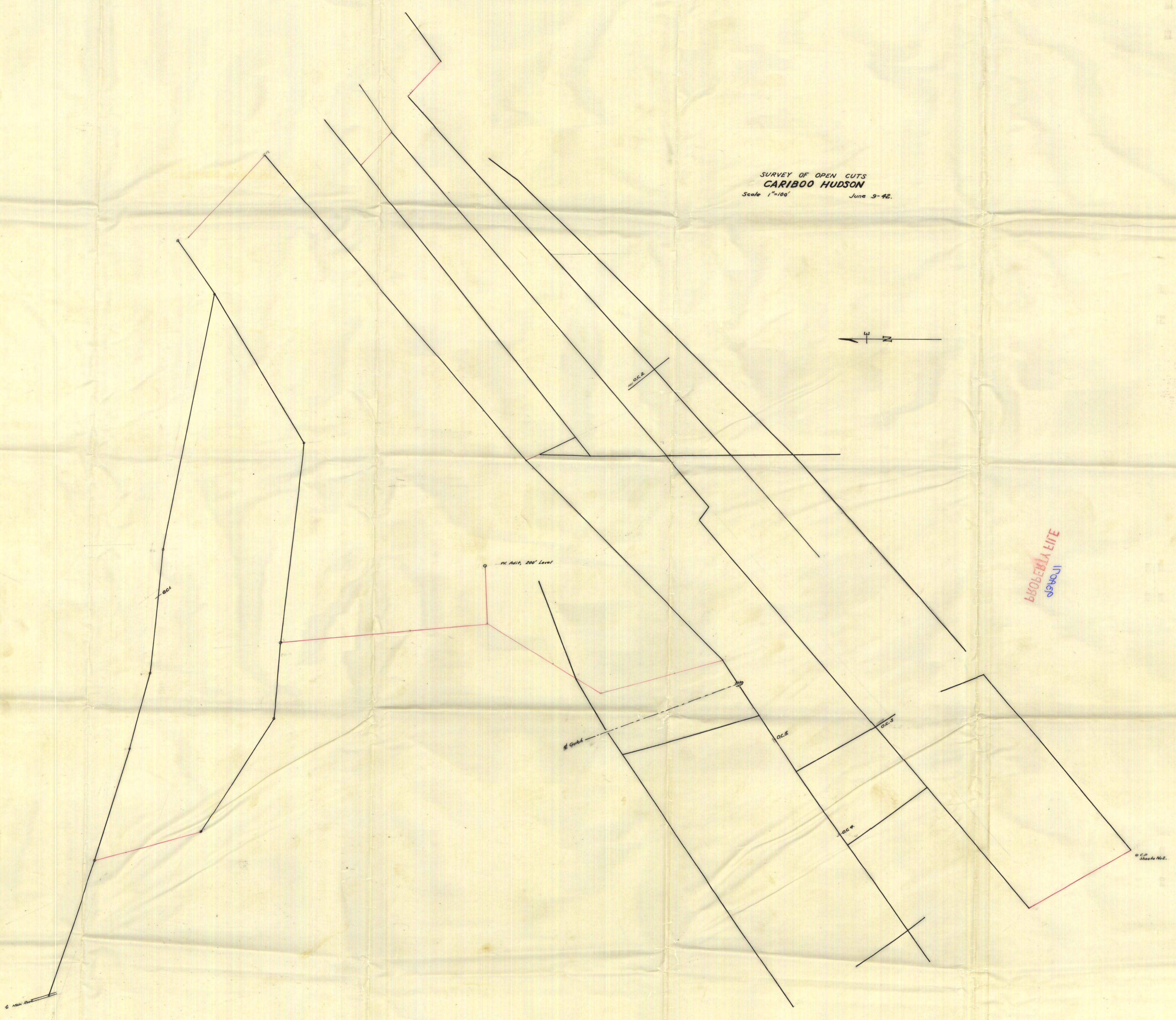
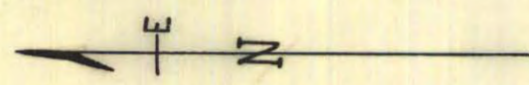
O.C. 4.

1% scheelite in quartz float. quartz appears to come from 2' quartz vein or replacement in limestone - vein strike NW - dip to E

O.C. 5.

1% scheelite, as disseminated float above. a limestone member.

SURVEY OF OPEN CUTS
CARIBOO HUDSON
Scale 1"=100' June 3-42.



PROBABLE LINE

© C.P. Stone & Co.