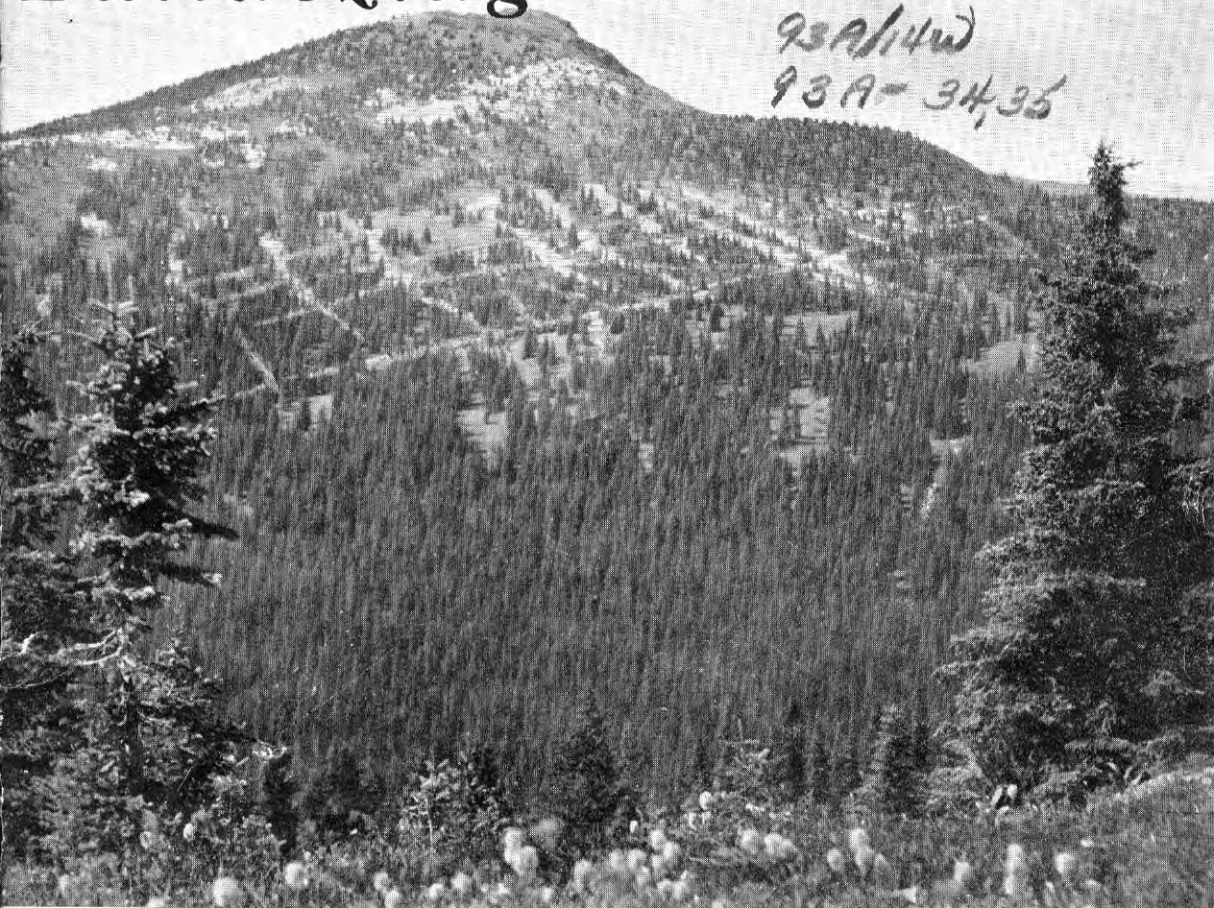
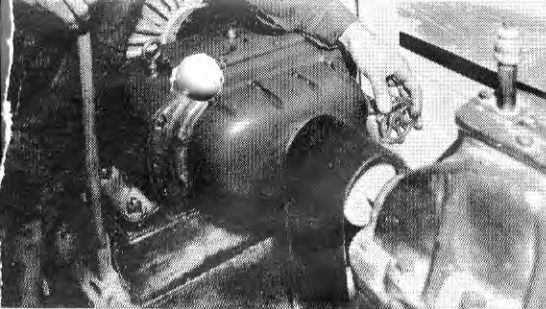


# Bulldozing Yanks Peak

93A/14w

93A-34,35





materials from where they are to where they are wanted next, is at your service. No inquiry is too large or too small to merit our painstaking attention.

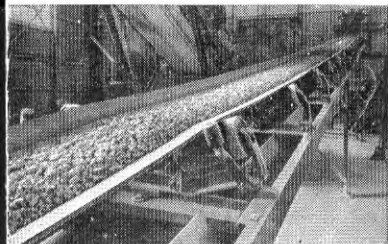
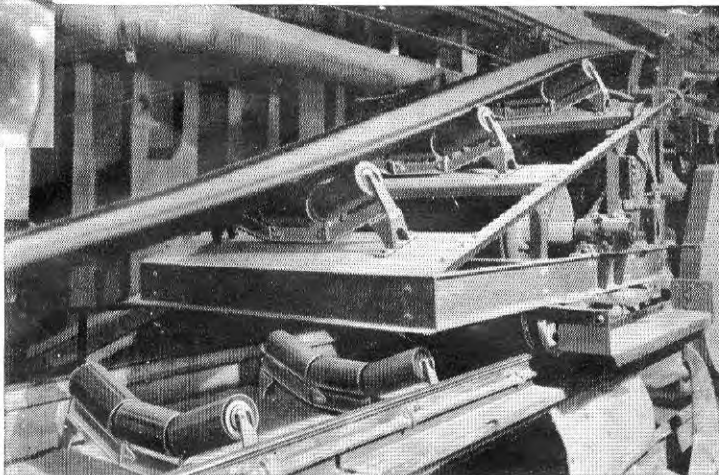
## LINK-BELT LIMITED

Vancouver, Toronto, Montreal, Swastika, or Mumford, Medland, Limited  
Winnipeg

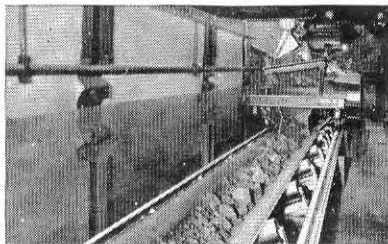
7712

● Above: Controlling speed of ore-feeder belt conveyor from mill storage bin to ball mill—with P. I. V. Gear infinitely variable speed transmission.

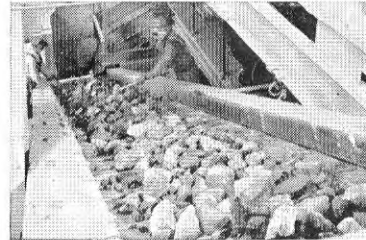
Right: 30" wide anti-friction belt conveyor handling 400 tons of minus 1" gold ore per hour, working 16 hours per day, or at the rate of 6000 tons per day—half of this volume being a circulating load. The tripper is of all-steel construction, completely automatic, electrically controlled.



Self-Aligning Idler keeps conveyor belt central



Belt Conveyor with travelling feeder

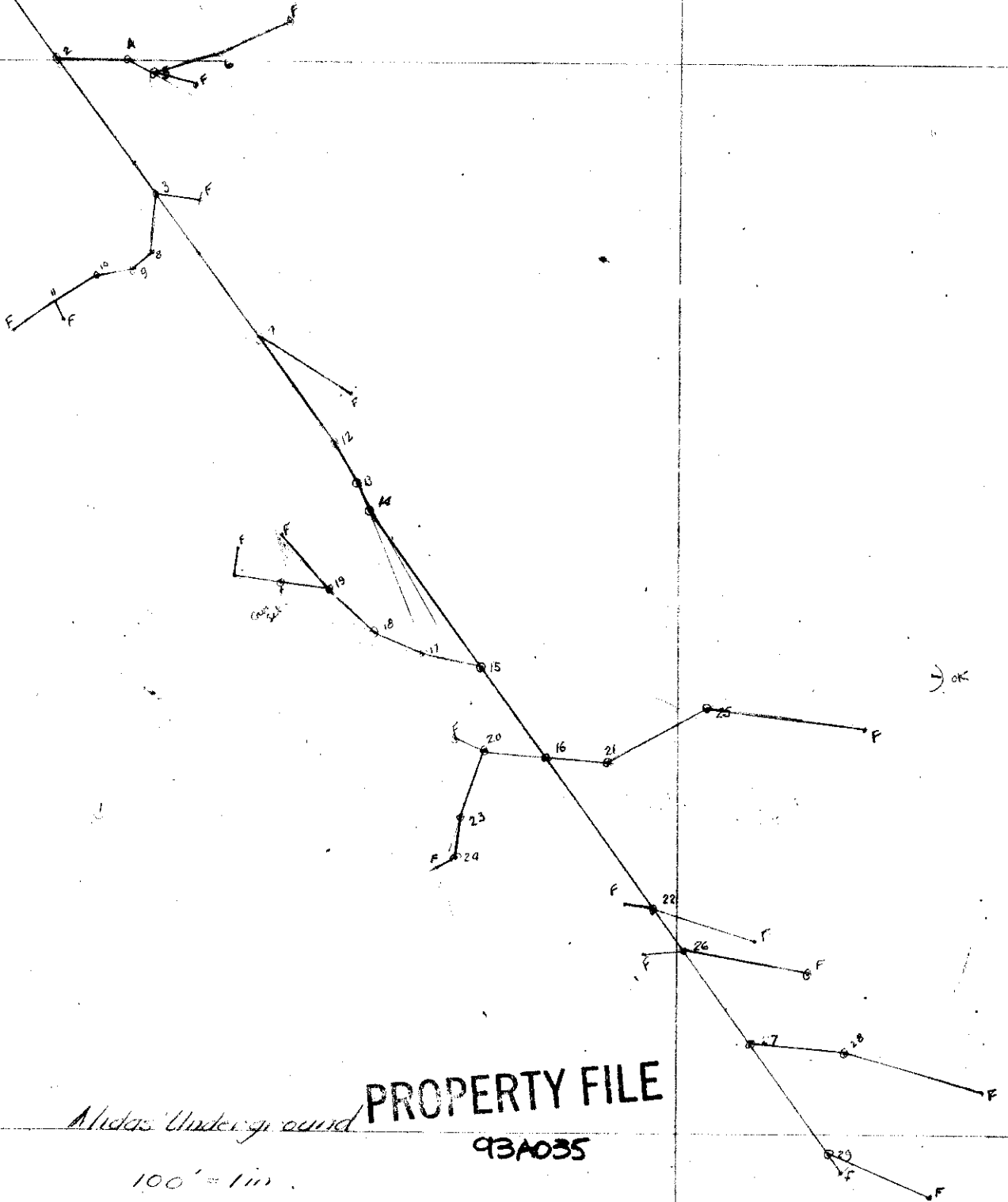


Picking ore on Apron Conveyor



013921

*Midas A-101*



*Midas Underground*

**PROPERTY FILE**

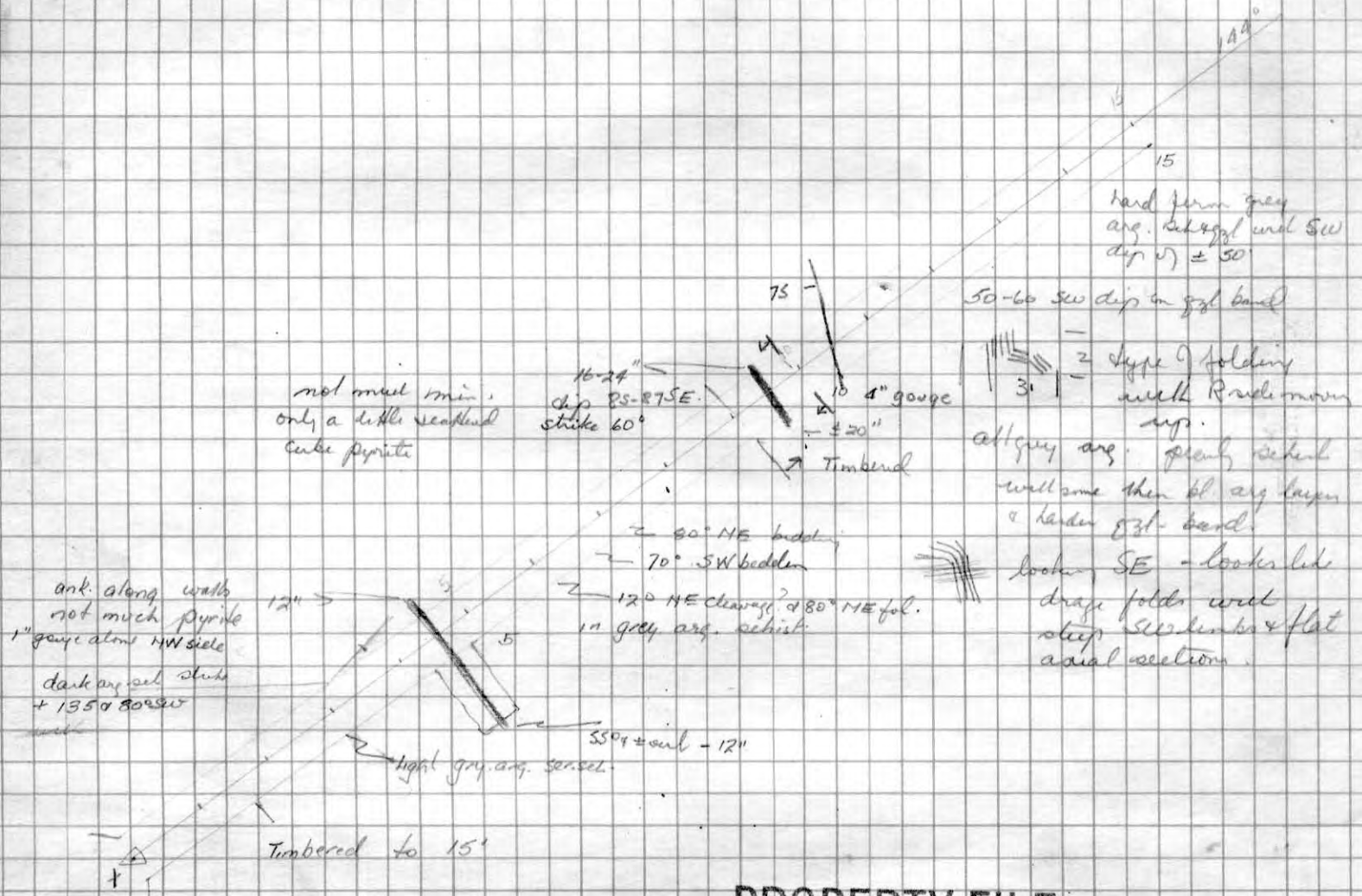
93A035

100' = 1 in

N  
Asst.

Midas Adit  
Scale 1=20

(1)



PROPERTY FILE

93A035



2

260 on R side 2' - F.W.  
343 1/2 1.4" sph of fine

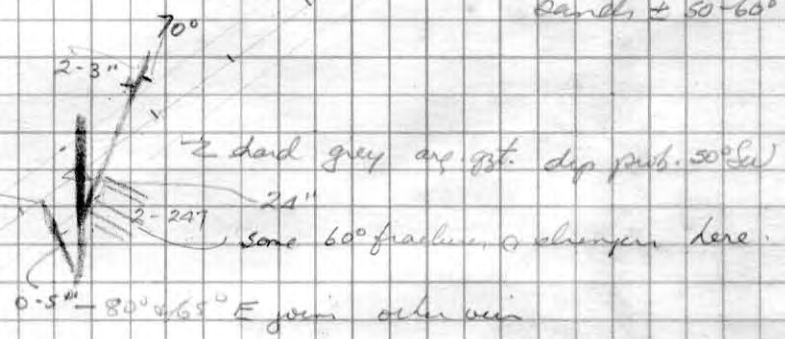
not small ones, but  
dark along wall  
2-3" width



grey shaly lens  
arg. gzt.

55° SW

5 all SW dipping  
grey arg gzt  
with arg sch  
bands + 50-60°



rock is grey arg schal  
& arg. gzt - but no  
ol. gzt like above.

lens around  
hard grey arg. gzt

no pyrite here

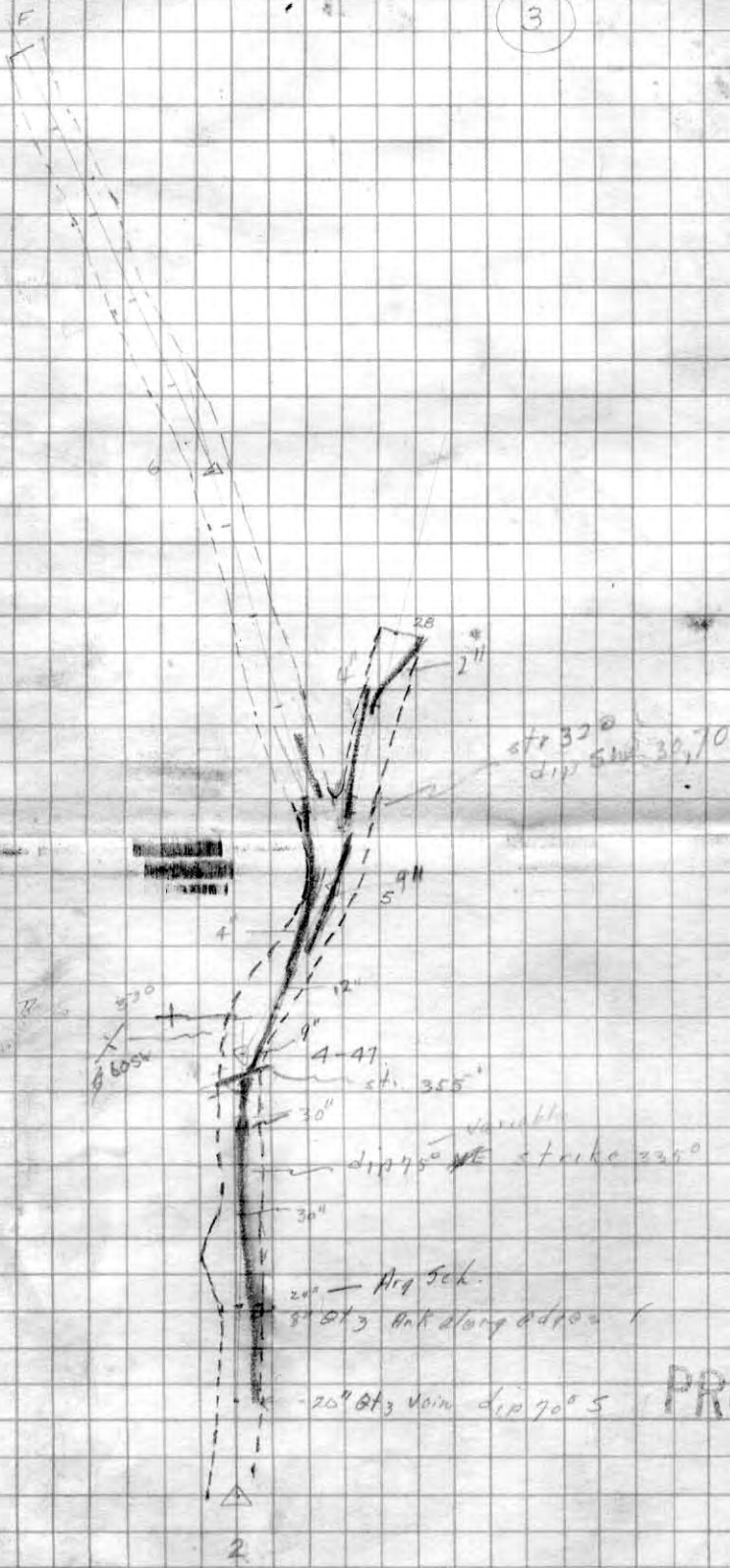


lens and 0-10" of  
gzt lens across  
you

15 arg. sch. dark  
with SW dip  
of 50°

93A035  
PROPERTY FILE

3



93A035

PROPERTY FILE

←



rock is soft grey arg. sch. 0-12"

down to cross drift 8" max

No 56

1-4"

2"

No 8  
0-8" cross road creeps  
in back - must be  
top of vein  
2-8" - top of vein with ank  
2' in back 10" or wall - must  
anticlinal strike 50° & dip  
75° NE

two 95° vein fracture  
Coulter, along 90° fracture  
direction & making  
a simple stepover  
vein which is not  
very strong  
small out of py  
engty.

obviously  
related to  
small N.S. fault

Fracturing @  
95° & 40°  
with 95°  
dominant

flat to SW dipping beds  
with 80° NE fractures  
rocks grey arg. sch.

some 1-2" gty

grains, red with  
gty carbon

grains set

6005  
204  
12" gty.  
70' vein fault  
same fault as  
in site  
up to 6" gty.

350  
250  
24 gty

40° slingers in the back up to 2" but short  
& lensing.

light ser. ank. sch. with hard flinty  
rock to SW. alt. displaced by  
fault. & 25° NE cleavage  
at 9+20 bedding 35° NE cleavage  
consider 60°  
@ 9+20  
drag folding, low pitch to  
NW

flat bedding  
25° NE cleav  
contained  
small gty fossilifer  
from Δ 10+1 on.

form. 1/2" gty slingers with pyrr.

from Δ 10 to face  
panel of rocks  
NE dipping & with  
drag folds indicates  
axis to SW. Good  
structure



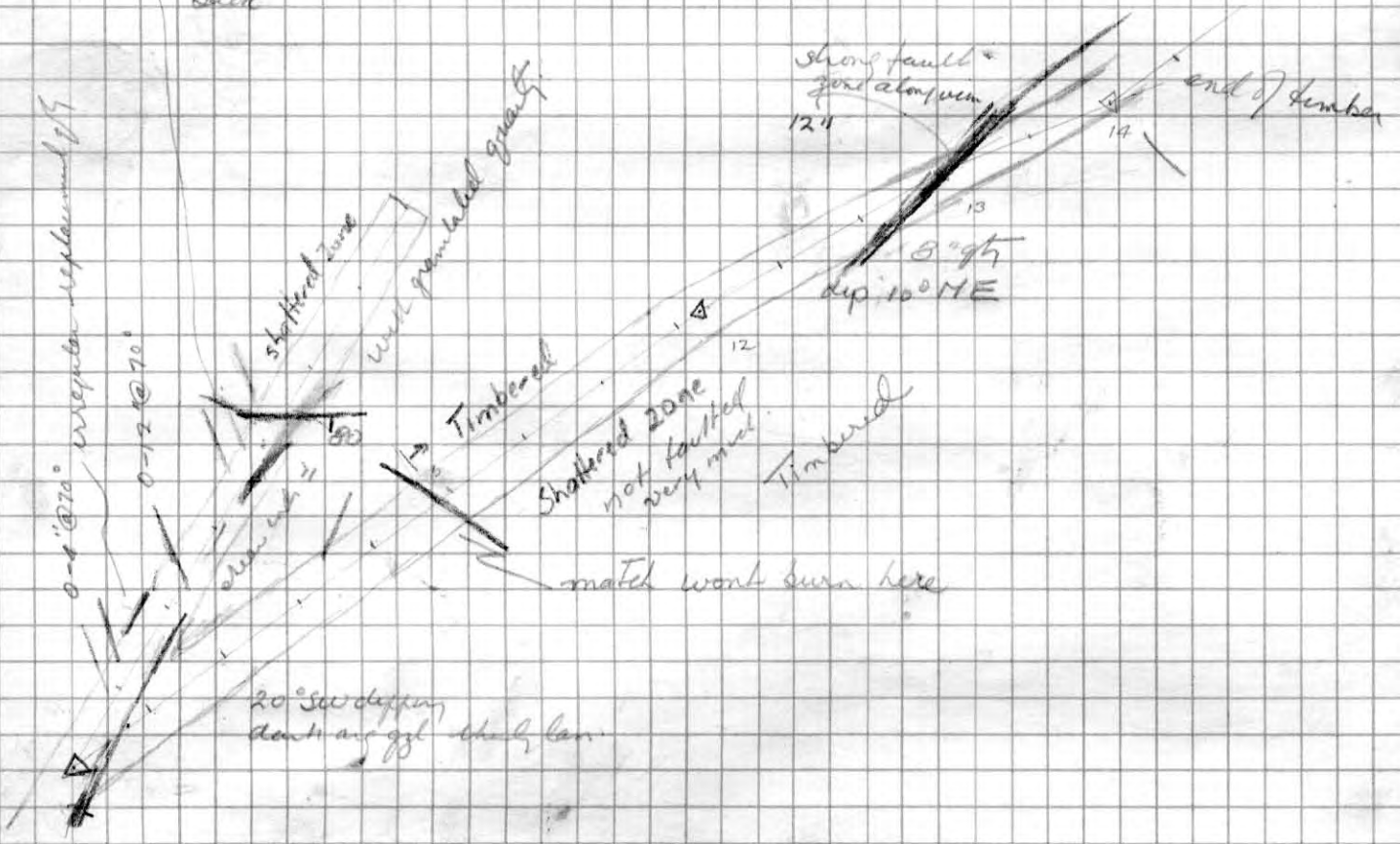
315° & 20° NW  
pitch on drag

except for light colored  
ank spotted ser. sch.  
rock are all arg. sch & gty.  
about mid grey in color  
110° & 75°  
4" with ank & py.

PROPERTY FILE  
73A035

Two 1/6" black gty near vein on surface come down underground

don't cross Igwen at  
Back

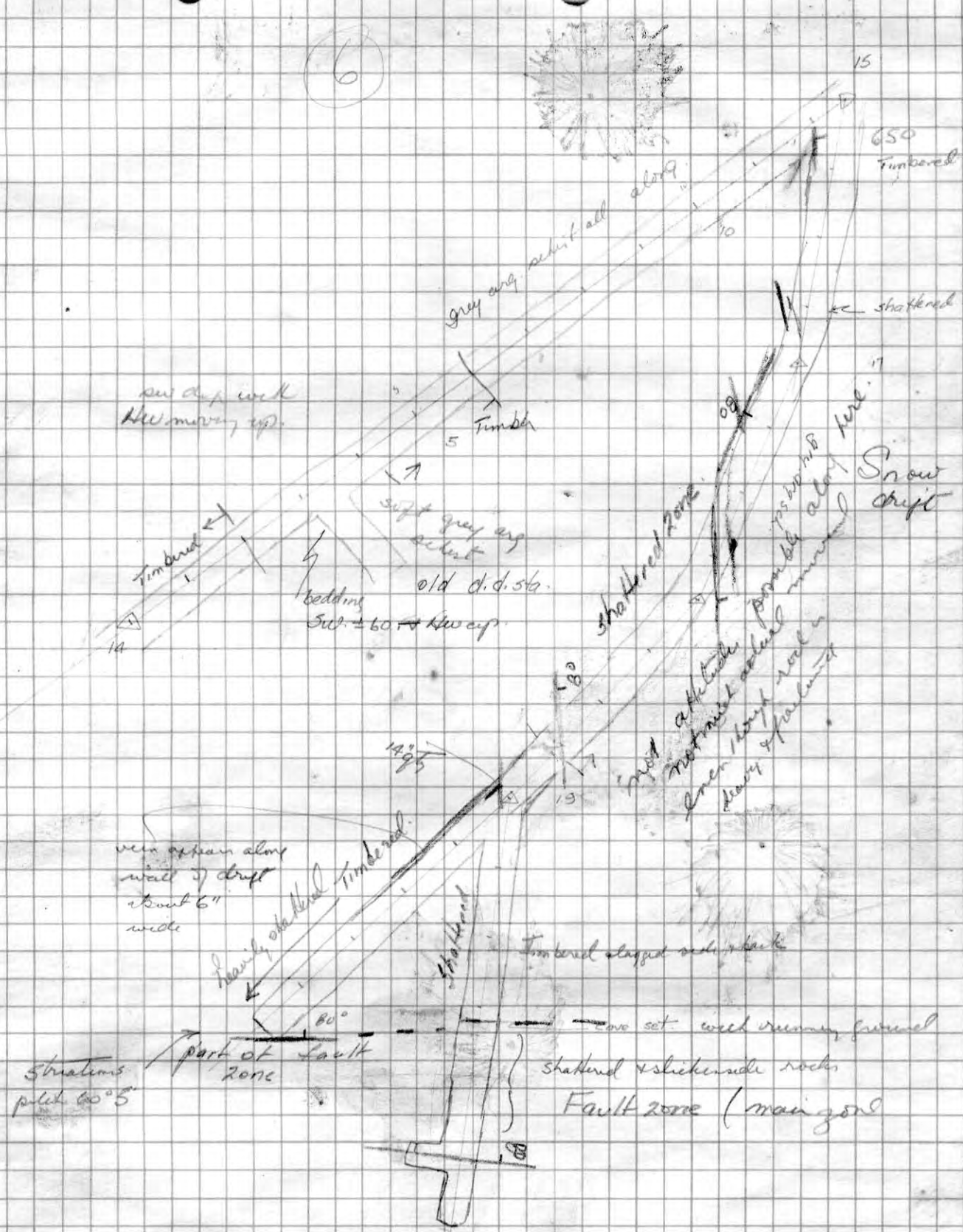


PROPERTY FILE  
93A035

↖ ↗



6



PROPERTY FILE

93A035

Midas

(7)

probably on road with  
broken for too  
60' bearing

D.O. sample?

5' hard  
grey slates  
with  
bedding  
flat 10° dip S  
small sample (10')

had black shale with ggl layers

vertical beds  
x flat cleavage?

see spec.

shattered  
12-14" pt  
timbered on  
side

heavy ground  
on side

vert x 108° cleavage  
in hard sh. plates.

with thin  
jointing

16  
11-14  
seen weaves  
around

15"  
angle of dip

broken ground

2" x 70°

with grey arg  
sh. - no att.

2' shattered  
sh.

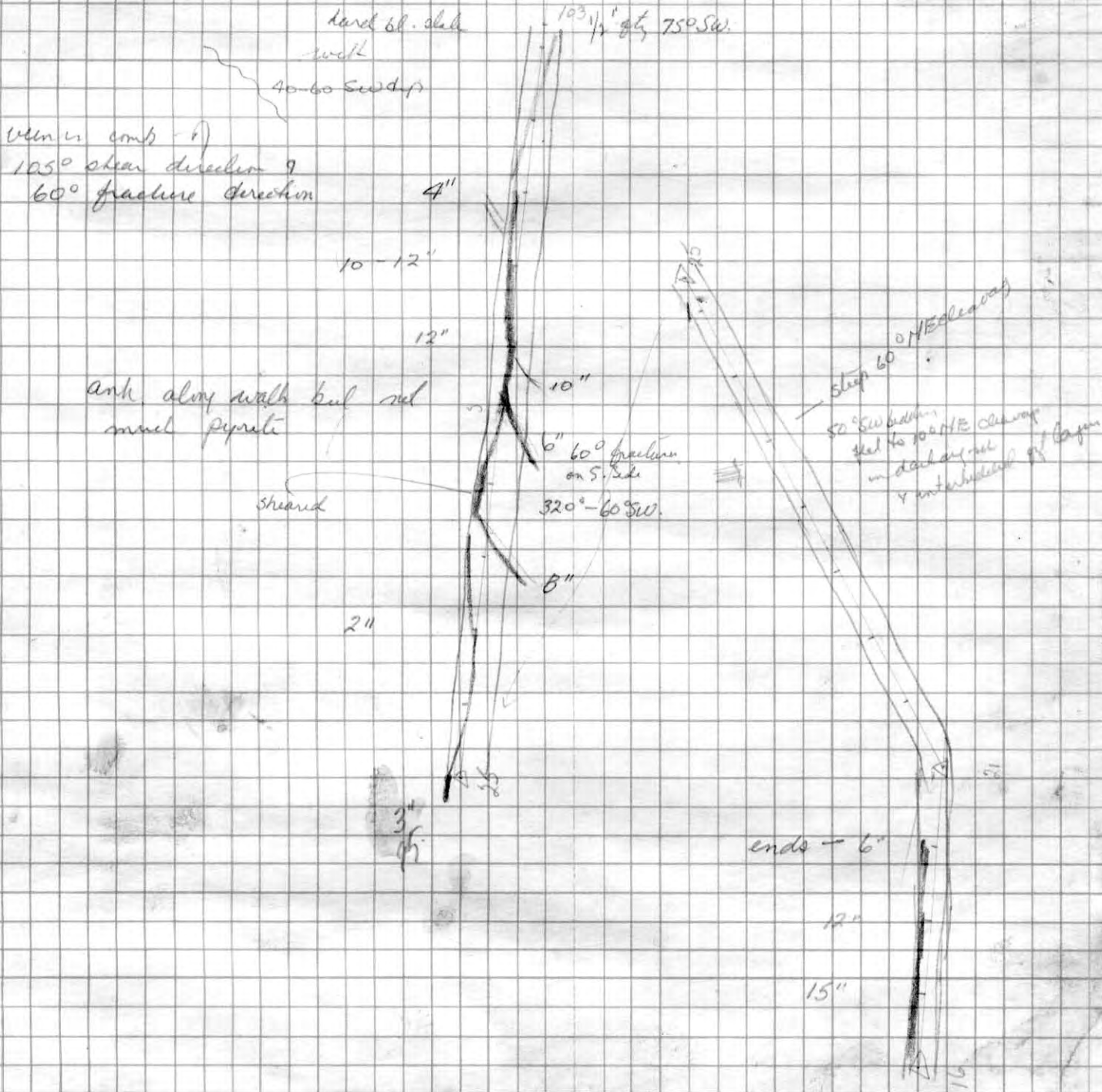
grey arg  
sh. - no bedding  
seen

small slip  
sh. broken  
ground

PROPERTY FILE  
93A035



(B)



PROPERTY FILE  
93A035



S

83

well cap  
and  
antenna

1" stringer  
75° S.

27

60° fracture  
down

bedding 20° SW

some  
rip  
in the  
85

60° fracture  
shel 1-2" 85

83  
12"

26

60° fracture  
in face

no clamp

grey silty  
sandstone  
plate

122

noth

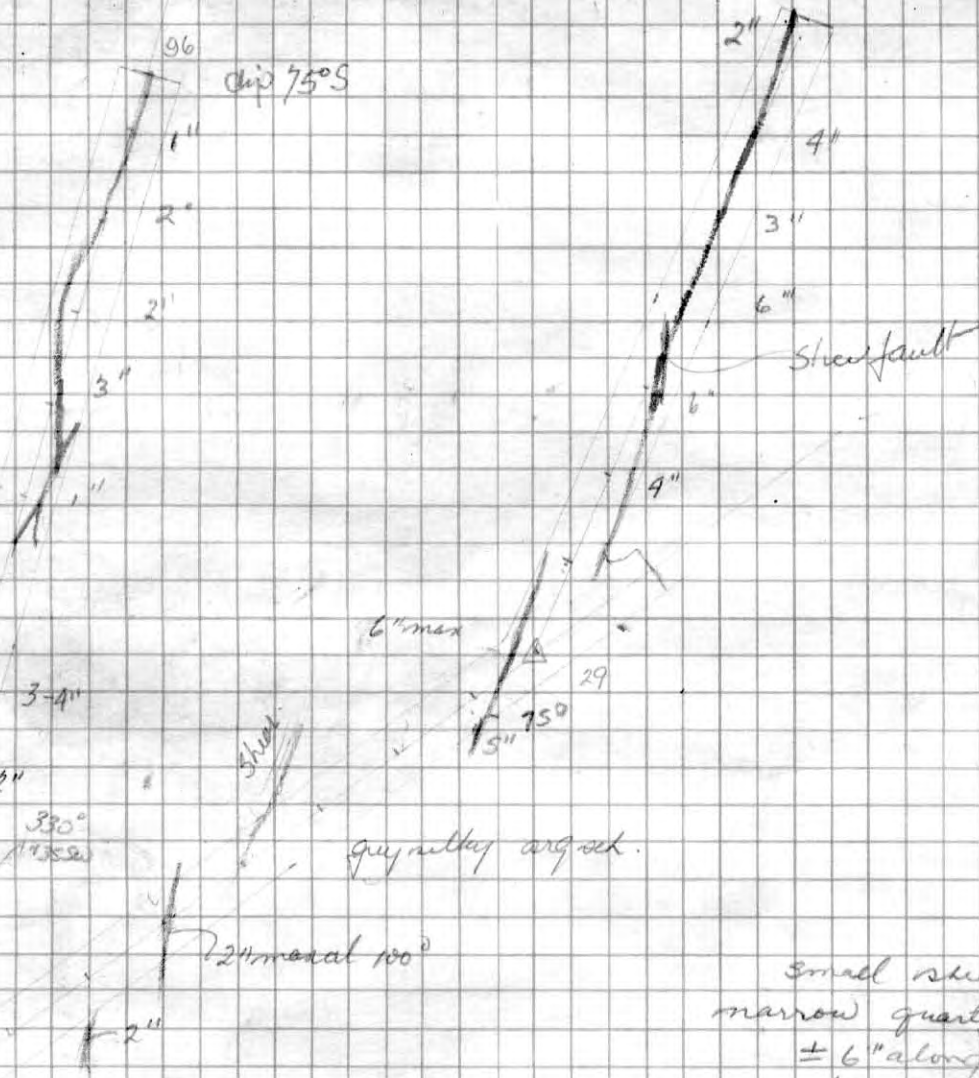
8"

PROPERTY FILE

93A035

N  
Y

11



quartzite arg. sch.

Small shear with narrow quartz mass ± 6" along them rock is essentially the same

27-F - 107° - 30'

ant along walls some pep.

3'-0" in 12"

step SW. dip looks like in block and arg. sch.



PROPERTY FILE  
93A035