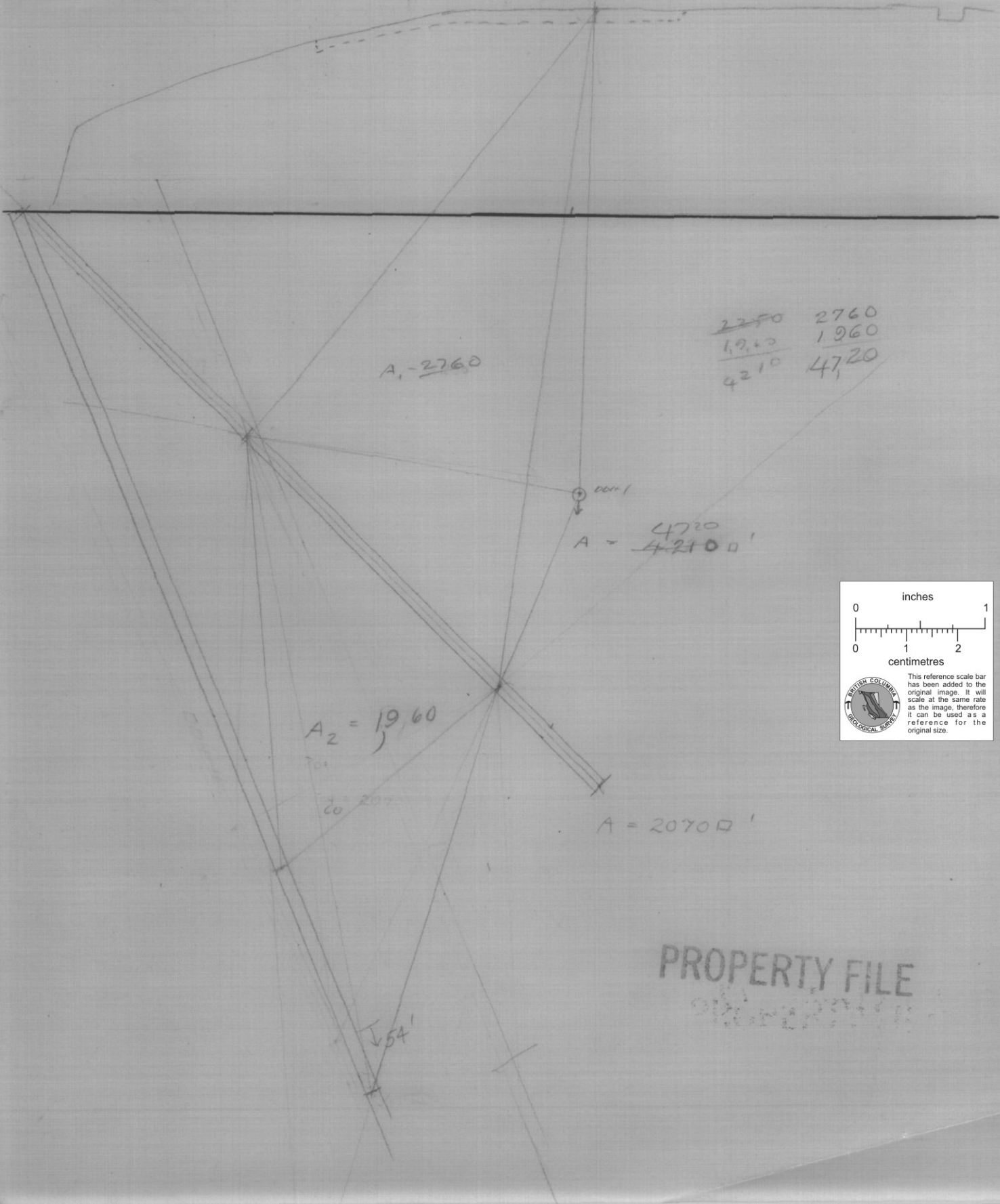


93A/2W
93A-1, 13-16

013772

III
6-11



$A_1 = 2760$

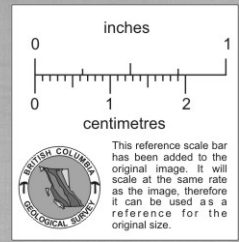
2250	2760
1960	1960
4210	4720

2001
 $A = 4720$
 $A = 42100'$

$A_2 = 1960$

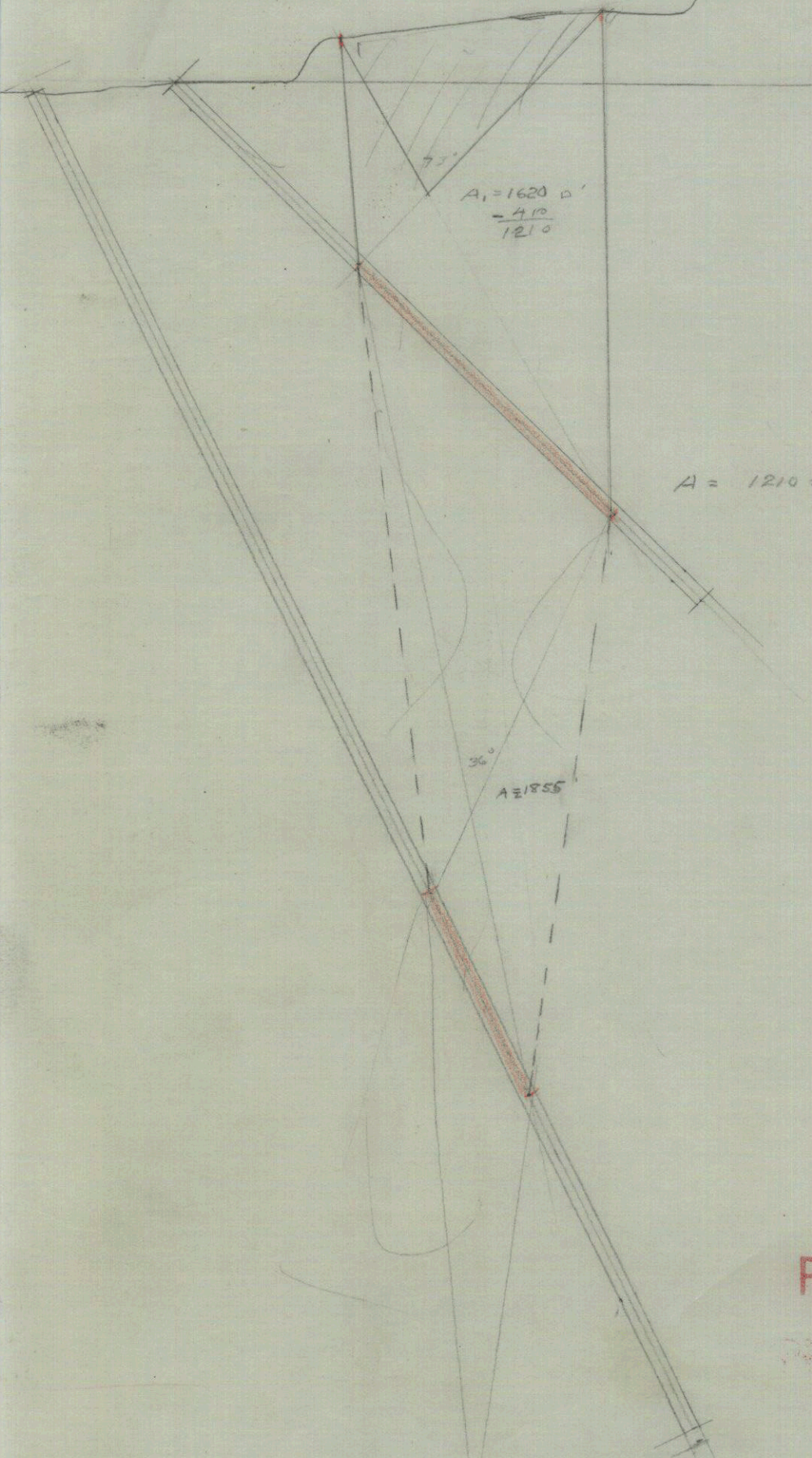
$A = 20700'$

54'



PROPERTY FILE

8-12 I
8, 12



$$A_1 = 1620 \text{ sq'}$$
$$- 410$$
$$\hline 1210$$

$$A = 1210 + 1855 = 3065 \text{ sq'}$$

$$36^\circ$$
$$A = 1855$$

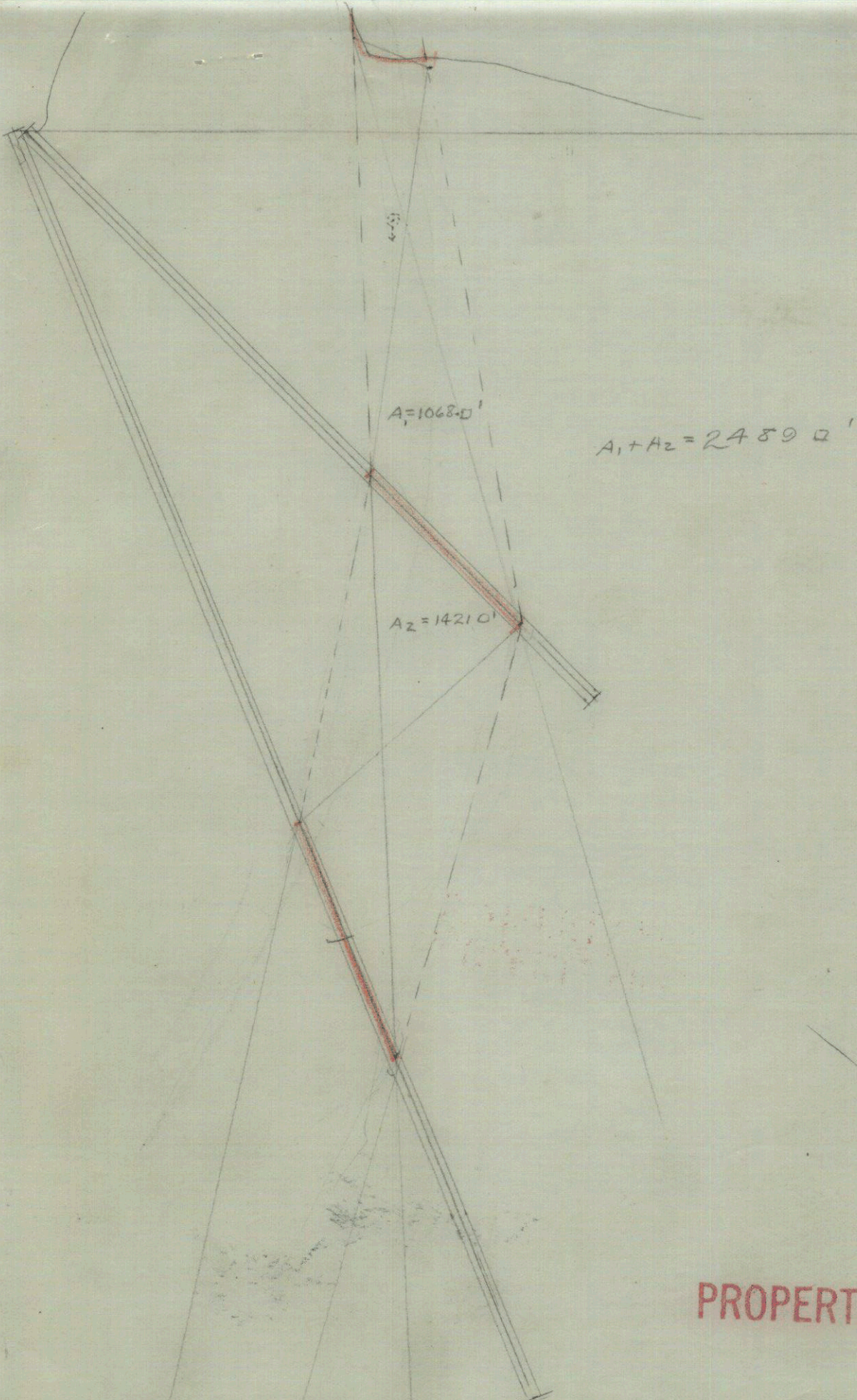
inches

centimetres

This reference scale bar has been added to the original image. It will scale at the same rate as the image, therefore it can be used as a reference for the original size.

PROPERTY FILE

2-11 II
2-11



inches
0 1

centimetres
0 1 2

This reference scale bar has been added to the original image. It will scale at the same rate as the image, therefore it can be used as a reference for the original size.

PROPERTY FILE